

STATE OF ILLINOIS
DEPARTMENT OF TRANSPORTATION
DIVISION OF HIGHWAYS

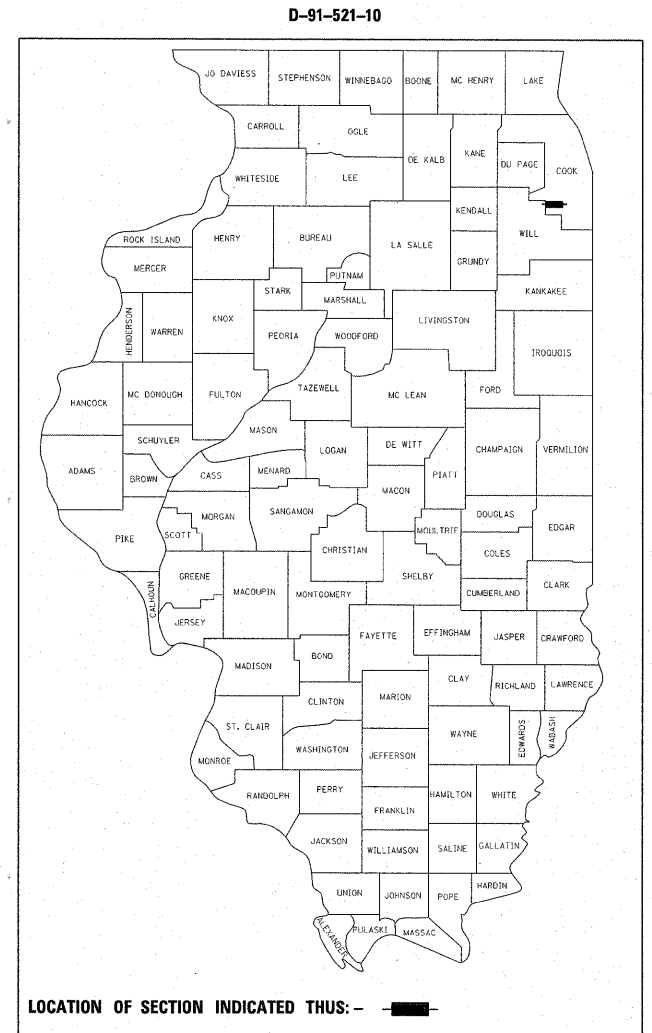
**PROPOSED
HIGHWAY PLANS**

FAU RTE. 1600: 143RD STREET
WILL COUNTY LINE TO IL RTE. 7 (WOLF RD.)
SECTION 2010-024 RS
PROJECT: M-1600(001)
RESURFACING (3P)
COOK COUNTY

C-91-521-10

F.A.U. RTE.	SECTION	COUNTY	TOTAL SHEETS	SHEET NO.
1600	2010-024 RS	COOK	22	1
FED. ROAD DIST. NO. 1	ILLINOIS	CONTRACT NO. 60K52		

FOR INDEX OF SHEETS, SEE SHEET NO. 2



TRAFFIC DATA

2010 ADT = 14,400
POSTED SPEED LIMIT = 45 MPH

STATE OF ILLINOIS
DEPARTMENT OF TRANSPORTATION
DIVISION OF HIGHWAYS

SUBMITTED JANUARY 31, 20 11

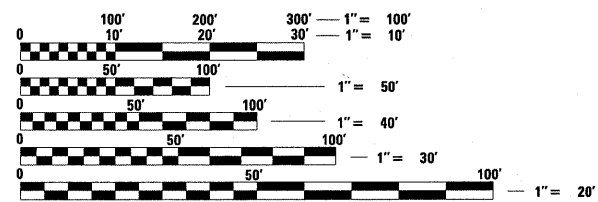
Diane M. O'Keefe or
DEPUTY DIRECTOR OF HIGHWAYS, REGION ENGINEER

March 05 20 11
Scott E. Stitt P.E.
Acting ENGINEER OF DESIGN AND ENVIRONMENT

March 05 20 11
Christine M. Reed
DIRECTOR OF HIGHWAYS, CHIEF ENGINEER

**PRINTED BY THE AUTHORITY
OF THE STATE OF ILLINOIS**

THE PROJECT IS LOCATED IN
THE VILLAGE OF ORLAND PARK
IN COOK COUNTY.

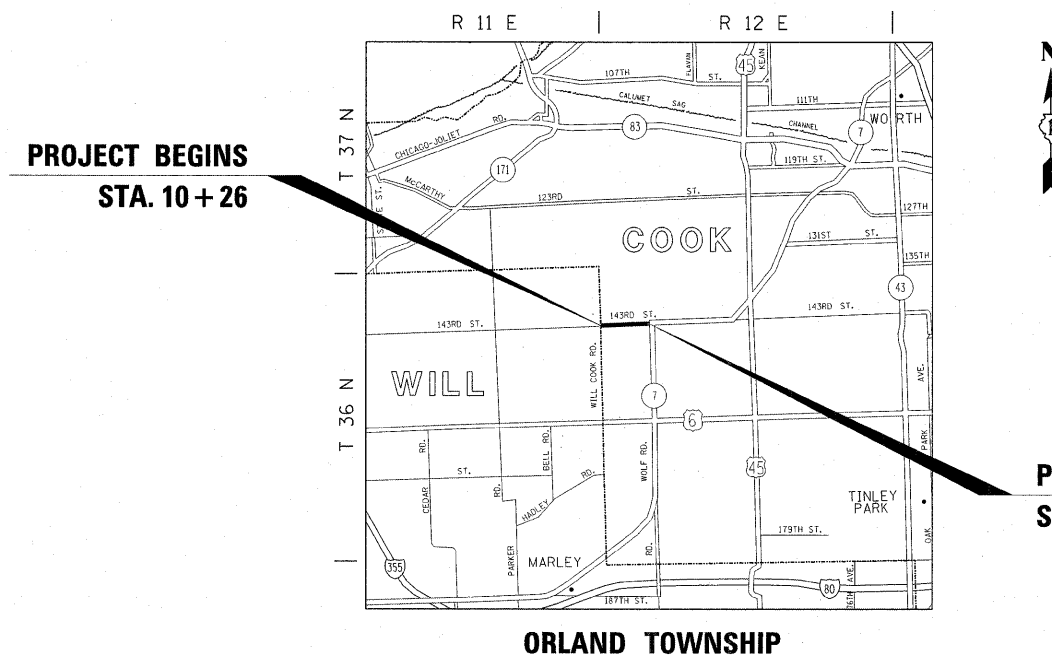


FULL SIZE PLANS HAVE BEEN PREPARED USING STANDARD
ENGINEERING SCALES. REDUCED SIZED PLANS WILL NOT
CONFORM TO STANDARD SCALES. IN MAKING MEASUREMENTS
ON REDUCED PLANS, THE ABOVE SCALES MAY BE USED.

J.U.L.I.E.
JOINT UTILITY LOCATION INFORMATION FOR EXCAVATION
1-800-892-0123
OR 811

PROJECT ENGINEER: KARI SMITH (847) 705-4437
PROJECT MANAGER: KEN ENG (847) 705-4247

CONTRACT NO. 60K52



GROSS LENGTH OF PROJECT = 5,318 FT. = 1.007 MILE
NET LENGTH OF PROJECT = 5,318 FT. = 1.007 MILE