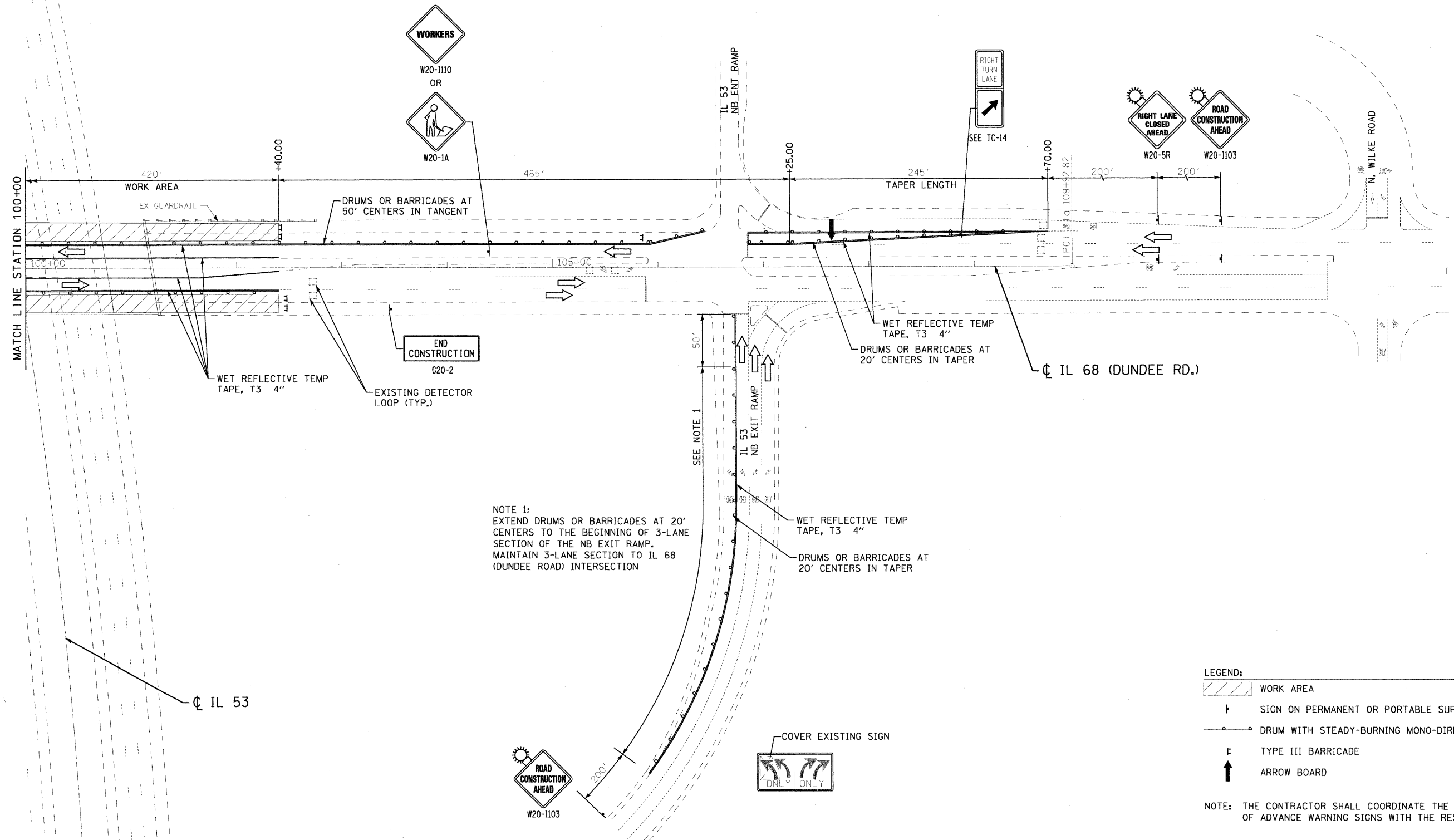


SIGNS TO BE REMOVED OR TURNED AWAY FROM TRAFFIC WHEN NO WORKERS ARE PRESENT.



NOTE 1:
EXTEND DRUMS OR BARRICADES AT 20' CENTERS TO THE BEGINNING OF 3-LANE SECTION OF THE NB EXIT RAMP. MAINTAIN 3-LANE SECTION TO IL 68 (DUNDEE ROAD) INTERSECTION

- LEGEND:
- WORK AREA
 - SIGN ON PERMANENT OR PORTABLE SUPPORT
 - DRUM WITH STEADY-BURNING MONO-DIRECTION LIGHT
 - TYPE III BARRICADE
 - ARROW BOARD

NOTE: THE CONTRACTOR SHALL COORDINATE THE EXACT PLACEMENT OF ADVANCE WARNING SIGNS WITH THE RESIDENT ENGINEER.

FILE NAME = G:\projects\2102195_0066A\CADD\Civil\Sheet\170110-06-MOT104.dgn



USER NAME = zsookd	DESIGNED - DJB	REVISED -
PLOT SCALE = 50.00' / IN.	DRAWN - ENTRAN	REVISED -
PLOT DATE = 3/30/2011	CHECKED - TMH	REVISED -
	DATE - 02/18/11	REVISED -

STATE OF ILLINOIS
DEPARTMENT OF TRANSPORTATION

IL ROUTE 68 (DUNDEE RD.) OVER IL ROUTE 53
MOT - SUGGESTED TRAFFIC CONTROL STAGE 2

SCALE: 50.00' / IN. SHEET NO. OF SHEETS STA. TO STA.

F.A.P. RTE. 343	SECTION 531-4HBK-BR-1	COUNTY COOK	TOTAL SHEETS 25	SHEET NO. 8
CONTRACT NO. 60L47				
FED. ROAD DIST. NO. 1 ILLINOIS FED. AID PROJECT				