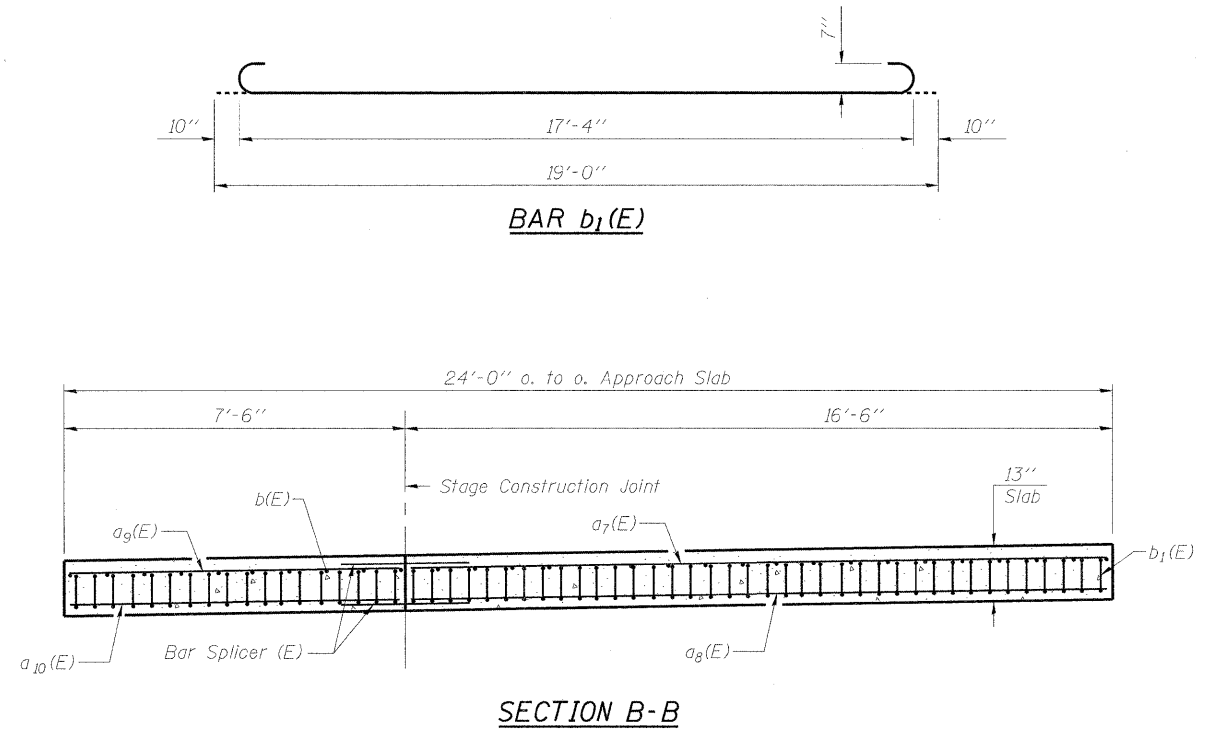


PLAN
(Westbound shown, Eastbound similar)



SECTION B-B

Notes:
 The approach footing maximum applied service bearing pressure (Q_{max}) = 2.0 ksf.
 For bar splicer details, see Sheet S10.
 The Contractor shall exercise care during removal of the existing approach slab to ensure that the approach bent and pavement connector integrity will not be detrimentally impacted. The Contractor shall repair any damage to the approach bent and pavement connector caused by his operation as directed by the Engineer at no additional cost to the Department.
 Cast of Subbase Granular Material, Concrete, and Reinforcement Bars included with Bridge Approach Pavement.

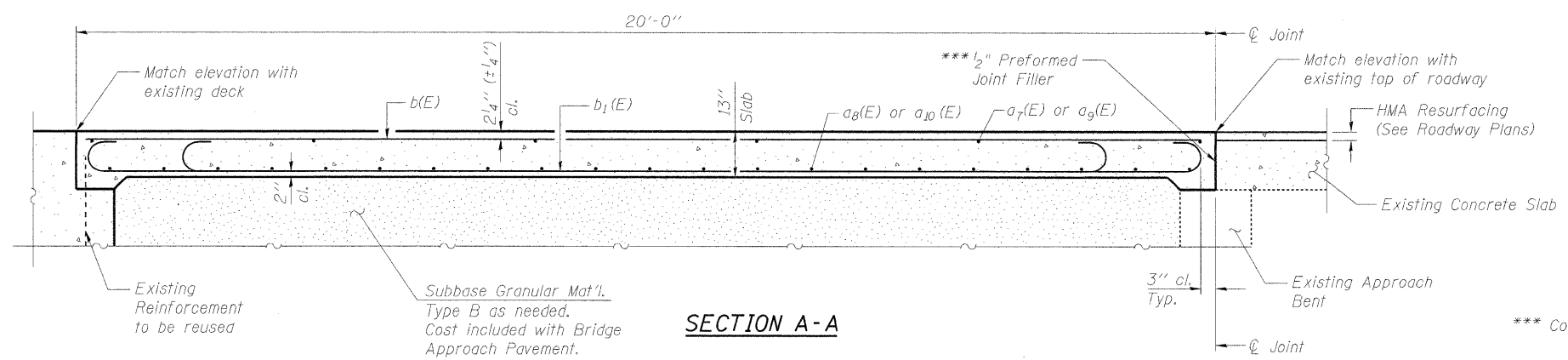
BILL OF MATERIAL

Description	Unit	Quantity
Bridge Approach Pavement	Sq. Yd.	107
Protective Coat	Sq. Yd.	107
Approach Slab Removal	Sq. Yd.	107

TWO EAST APPROACHES ESTIMATED QUANTITIES
(for information only)

Bar	No.	Size	Length	Shape	
a7(E)	12	#4	16'-4"	—	
a8(E)	42	#5	16'-4"	—	
a9(E)	12	#4	7'-3"	—	
a10(E)	42	#5	7'-3"	—	
b(E)	40	#4	19'-8"	—	
b1(E)	112	#7	19'-0"	—	
Reinforcement Bars, Epoxy Coated				Pound	6,100

*** Cost included with Bridge Approach Pavement



SECTION A-A

FILE NAME = G:\projects\2102155_0068A\CADD\Structure\0160761_60L47_005-Approach Slab.dgn

	USER NAME = zsaayrb	DESIGNED - BHS	REVISED -	STATE OF ILLINOIS DEPARTMENT OF TRANSPORTATION	EAST APPROACH SLAB RECONSTRUCTION S.N. 016-0961	F.A.P. RTE. 343	SECTION 531-4HBK-BR-1	COUNTY COOK	TOTAL SHEETS 25	SHEET NO. 15
	PLOT SCALE = N/A	DRAWN - MJB	REVISED -			CONTRACT NO. 60L47				
	PLOT DATE = 3/18/2011	CHECKED - GSP	REVISED -			SHEET NO. S5 OF 11 SHEETS				