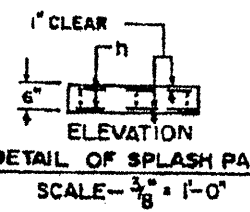
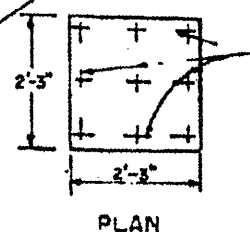


BILL OF MATERIAL FOR SPLASH PAD

BARS	NO	SIZE	LENGTH
h	12	4	2'-0"
REINF. BARS LBS.		16	
CLASS X CONC CU YLS. 0.1			



THE SPLASH PAD SHALL BE CONSTR. IN ACCORDANCE WITH ARTICLES 504 & 512 OF THE SPECIFICATIONS AND WILL BE PAID FOR AS POUNDS OF REINFORCEMENT BARS & CUBIC YARDS OF CLASS "X" CONCRETE.

FOR INFORMATION ONLY

FILE NAME =	USER NAME = aconnellte	DESIGNED -	REVISED -	STATE OF ILLINOIS DEPARTMENT OF TRANSPORTATION	LOCATION 1	SN 016-0806	F.A. RTE.	SECTION	COUNTY	TOTAL SHEETS	SHEET NO.	
ca:\pwwork\pwwork\acconnellte\0228365\0	758510-shd-plan.dgn	DRAWN -	REVISED -		SCUPPER AND DRAIN SYSTEM	SCALE:	SHEET NO. 17 OF 45 SHEETS	STA.	2010-068 BR	COOK	69	21
	PLOT SCALE = 1/8" = 1'-0"	CHECKED -	REVISED -									
	PLOT DATE = 9/3/2010	DATE -	REVISED -									
ILLINOIS FED. AID PROJECT												