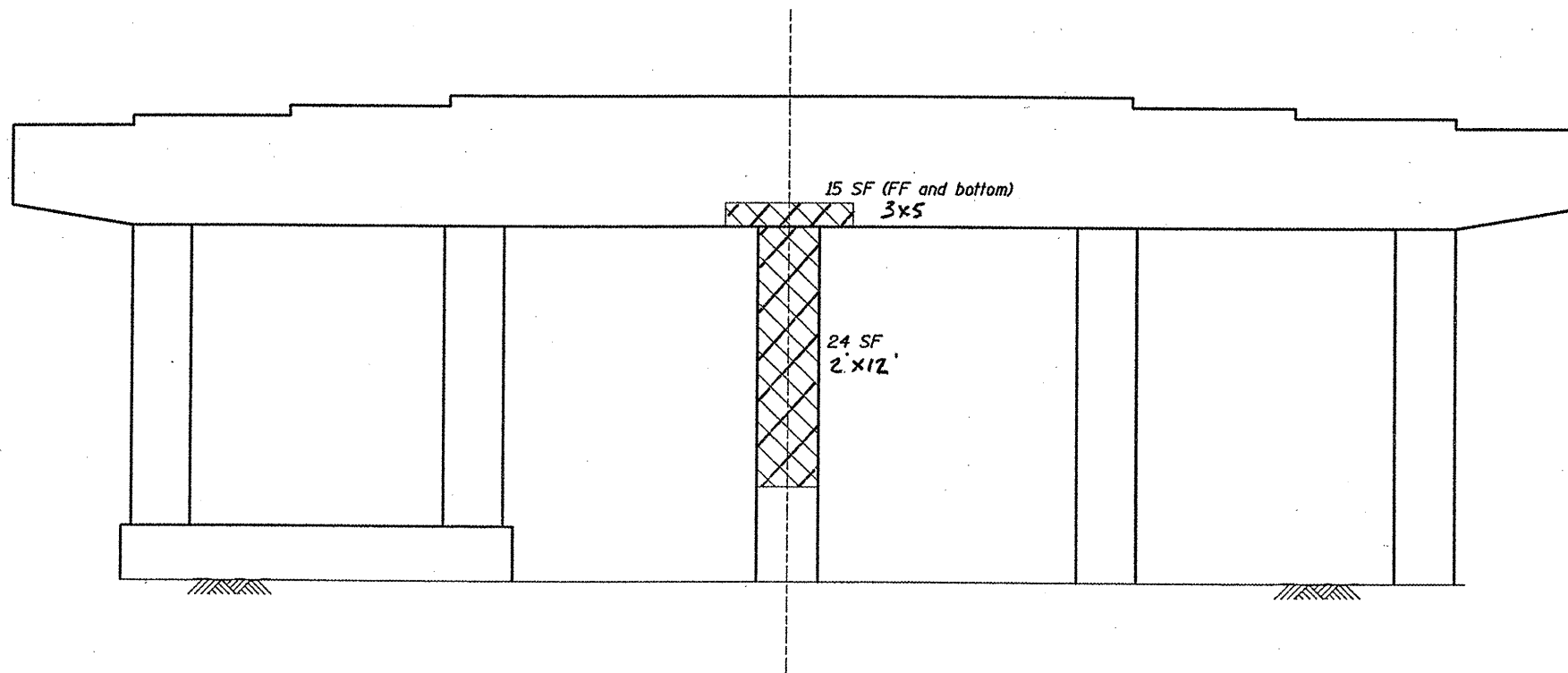


PIER 5 - NORTH FACE ELEVATION



PIER 5 - SOUTH FACE ELEVATION

PIER 5 BILL OF MATERIAL	UNIT	QUANTITY
STRUCTURAL REPAIR OF CONCRETE $\leq 5"$	SQ. FT.	62



STRUCTURAL REPAIR OF CONCRETE $\leq 5"$

FILE NAME =	USER NAME = oconnellte	DESIGNED -	REVISED -
e:\proj\work\p1\dot\oconnellte\0228365\0	790510-sht-pln.dgn	DRAWN -	REVISED -
	PLOT SCALE = 102.6242' / IN.	CHECKED -	REVISED -
	PLOT DATE = 9/1/2010	DATE -	REVISED -

STATE OF ILLINOIS
DEPARTMENT OF TRANSPORTATION

LOCATION 1	SN 016-0806
PIER STRUCTURAL REPAIR	PIER 5
SCALE:	SHEET NO. 23 OF 45 SHEETS STA. TO STA.

F.A. RTE.	SECTION	COUNTY	TOTAL SHEETS	SHEET NO.
VAC	2010-068 BR	COOK	69	23
CONTRACT NO. 60L51			ILLINOIS FED. AID PROJECT	