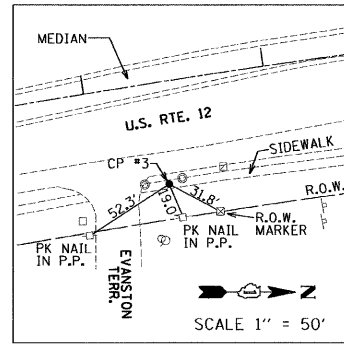


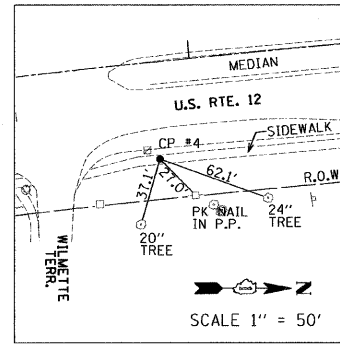
ALIGNMENT COORDINATES - U.S. RTE. 12			
STATION	N	E	
POB/PC	90+05.06	2,013,722.14	1,044,754.74
PI	100+49.73	2,014,697.83	1,044,381.45
PT	110+75.93	2,015,741.66	1,044,339.60

ALIGNMENT COORDINATES - HONEY LAKE RD.			
STATION	N	E	
POB	12+00.00	2,014,680.44	1,043,673.16
POT	20+00.00	2,014,675.34	1,044,473.14



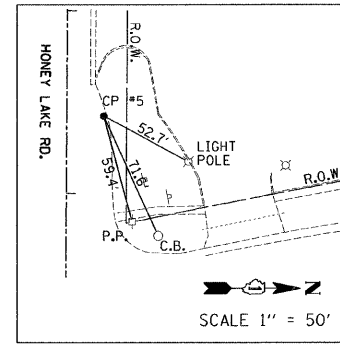
CONTROL POINT #3
CHISELED "X" IN CONCRETE WALK

STATION 103+39.02, 55.58' RT.
N 2,015,017.32
E 1,044,466.54
ELEV=859.57'



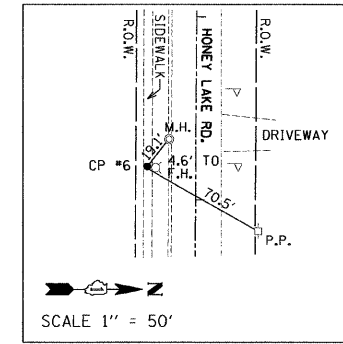
CONTROL POINT #4
CHISELED "X" IN CONCRETE WALK

STATION 106+78.45, 53.22' RT.
N 2,015,350.70
E 1,044,420.85
ELEV=859.51'



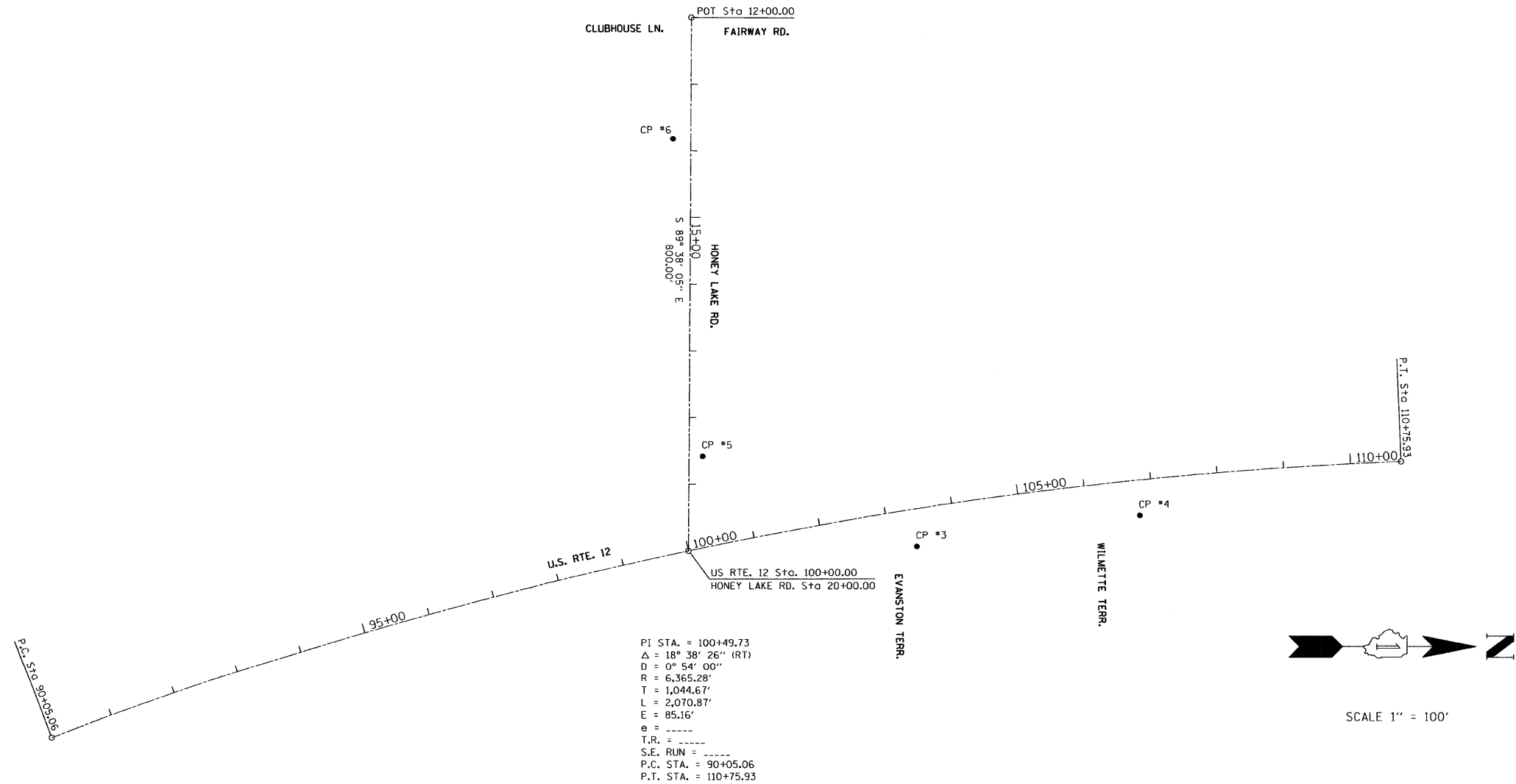
CONTROL POINT #5
PK NAIL IN ASPHALT SHOULDER

STATION 18+58.03, 20.35' LT.
N 2,014,696.59
E 1,044,331.30
ELEV=854.57'



CONTROL POINT #6
CHISELED "X" IN CONCRETE WALK

STATION 13+82.16, 26.66' RT.
N 2,014,652.62
E 1,043,855.14
ELEV=849.19'



FILE NAME =	USER NAME = USER.	DESIGNED - TP / EF	REVISED -	STATE OF ILLINOIS DEPARTMENT OF TRANSPORTATION	U.S. ROUTE 12 (RAND ROAD) AT HONEY LAKE ROAD ALIGNMENT AND TIES	F.A.P. RTE. 334	SECTION SY-2-N	COUNTY LAKE	TOTAL SHEETS 34	SHEET NO. 6		
FILEL	PLOT SCALE = 100.00' / IN.	DRAWN - TP / EF	REVISED -			SCALE: 1"=100'	SHEET NO. 1 OF 1 SHEETS	STA.	TO STA.	CONTRACT NO. 60L68		
	PLOT DATE = 2/14/2011	CHECKED - RS	REVISED -			ILLINOIS FED. AID PROJECT						
		DATE - 02-14-2011	REVISED -									