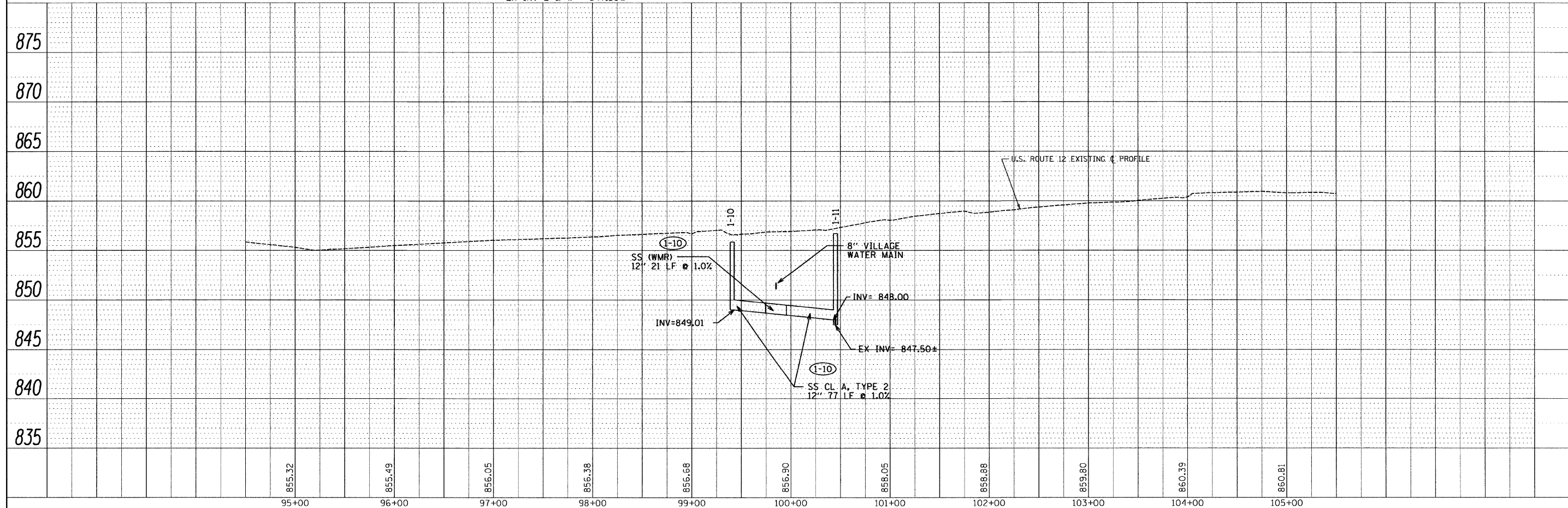
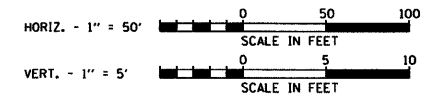
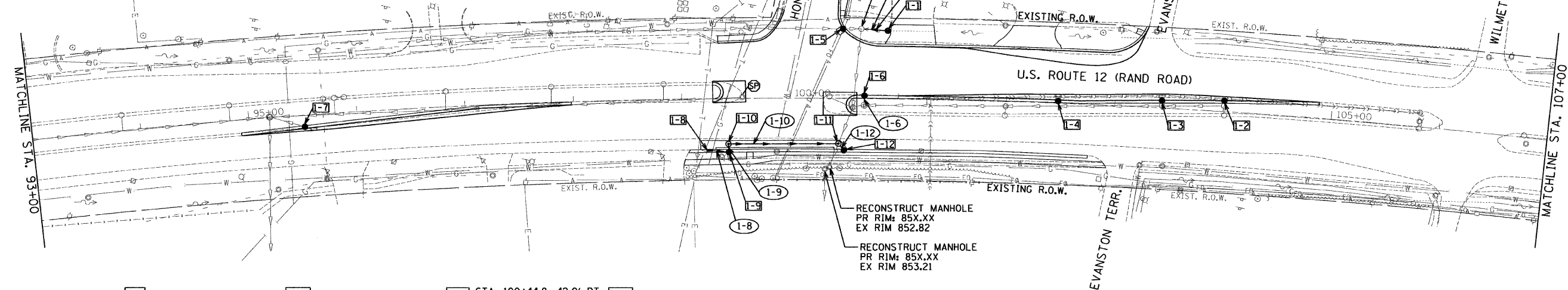


PLAN	SURVEYED	DATE
	NOTED	
	CHECKED	
	BY	
	NO. OF WAY CHECKED	
	NO. OF STRUCTURE NOTATIONS CHECKED	

PROFILE	SURVEYED	DATE
	NOTED	
	CHECKED	
	BY	
	NO. OF WAY CHECKED	
	NO. OF STRUCTURE NOTATIONS CHECKED	

- 1-1 STA. 100+90, 63.4' LT CATCH BASIN TYPE A 4' DIA TYPE 8 GRATE RIM EL. = ± 857.0 N INV. = 854.40 S INV. = 851.90 CONNECT TO EXISTING PIPE
- 1-2 STA. 104+01, 9.0' RT CATCH BASIN TYPE C TYPE 24 F&G RIM EL. = 860.0 E INV. = 856.50 CONNECT TO EXISTING PIPE
- 1-3 STA. 103+43, 5.7' LT CATCH BASIN TYPE C TYPE 24 F&G RIM EL. = 859.7 E INV. = 856.20 CONNECT TO EXISTING PIPE
- 1-4 STA. 102+47, 2.0' LT CATCH BASIN TYPE C TYPE 24 F&G RIM EL. = 858.5 E INV. = 855.40 CONNECT TO EXISTING PIPE
- 1-5 STA. 100+49.2, 64.8' LT MANHOLE, TYPE A, 4' DIA TYPE 24 F&G RIM EL. = 856.72 E INV. = 848.61 CONSTRUCT OVER EXISTING PIPE
- 1-6 STA. 10+69.2, 3.0' LT CATCH BASIN TYPE C TYPE 24 F&G RIM EL. = 857.70 E INV. = 854.30
- 1-7 STA. 95+51, 10.7' RT CATCH BASIN, TYPE C TYPE 24 F&G RIM EL. = 855.35 SW INV. = 851.64 CONNECT TO EXISTING PIPE
- 1-8 STA. 99+25, 47.8' RT INLET, TYPE A TYPE 24 F&G RIM EL. = 855.75 N INV. = 852.45
- 1-9 STA. 99+43, 49.6' RT CATCH BASIN TYPE A 4' DIA, TYPE 24 F&G RIM EL. = 855.80 S INV. = 852.27 W INV. = 852.30
- 1-10 STA. 99+43, 42.1' RT MANHOLE, TYPE A 4' DIA, TYPE 1 F&CL RIM EL. = 856.00 E INV. = 852.25 N INV. = 849.16
- 1-11 STA. 100+44.8, 42.0' RT MANHOLE, TYPE A 4' DIA, TYPE 1 F&CL RIM EL. = 856.70 N INV. = 853.44 S INV. = 848.00 EX INV E & W = 847.50±
- 1-12 STA. 100+50, 47.0' RT CATCH BASIN TYPE C TYPE 24 F&G RIM EL. = 856.52 E INV. = 853.52
- 1-6 SS CL A, TY 1, 12" 20 LF @ 5.00% CONNECT TO EXISTING MANHOLE INV = 850.90
- 1-6 SS CL A, TY 1, 12" 4 LF @ 1.00% 1 CY TRENCH BACKFILL
- 1-8 SS CL A, TY 1, 12" 18 LF @ 1.00% 1 CY TRENCH BACKFILL
- 1-9 SS CL A, TY 1, 12" 5 LF @ 1.00% 1 CY TRENCH BACKFILL
- 1-10 SS CL A, TYP 2, 12" 77 LF @ 1.00% SS (W/MR) 12" 21 LF @ 1.00% 114 CY TRENCH BACKFILL
- 1-12 SS CL A, TY 1, 12" 5 LF @ 1.00% 2 CY TRENCH BACKFILL



FILE NAME =	USER NAME = USER	DESIGNED - TP / EF	REVISED -	<b>STATE OF ILLINOIS DEPARTMENT OF TRANSPORTATION</b>	<b>U.S. ROUTE 12 (RAND ROAD) AT HONEY LAKE ROAD DRAINAGE PLAN AND PROFILE</b>	F.A.P. RTE. 334	SECTION SY-2-N	COUNTY LAKE	TOTAL SHEETS 34	SHEET NO. 9	
#FILE#	PLOT SCALE = 50,0000' / IN.	DRAWN - TP / EF	REVISED -			SCALE: 1"=50'	SHEET NO. OF SHEETS	STA. 94+92.57 TO STA. 104+88.01	CONTRACT NO. 60L68		
	PLOT DATE = 2/14/2011	CHECKED - RS	REVISED -			ILLINOIS FED. AID PROJECT					
		DATE = 02-14-2011	REVISED -								