

**STAMPED ASPHALT CROSSWALK DETAIL**

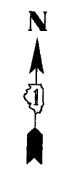
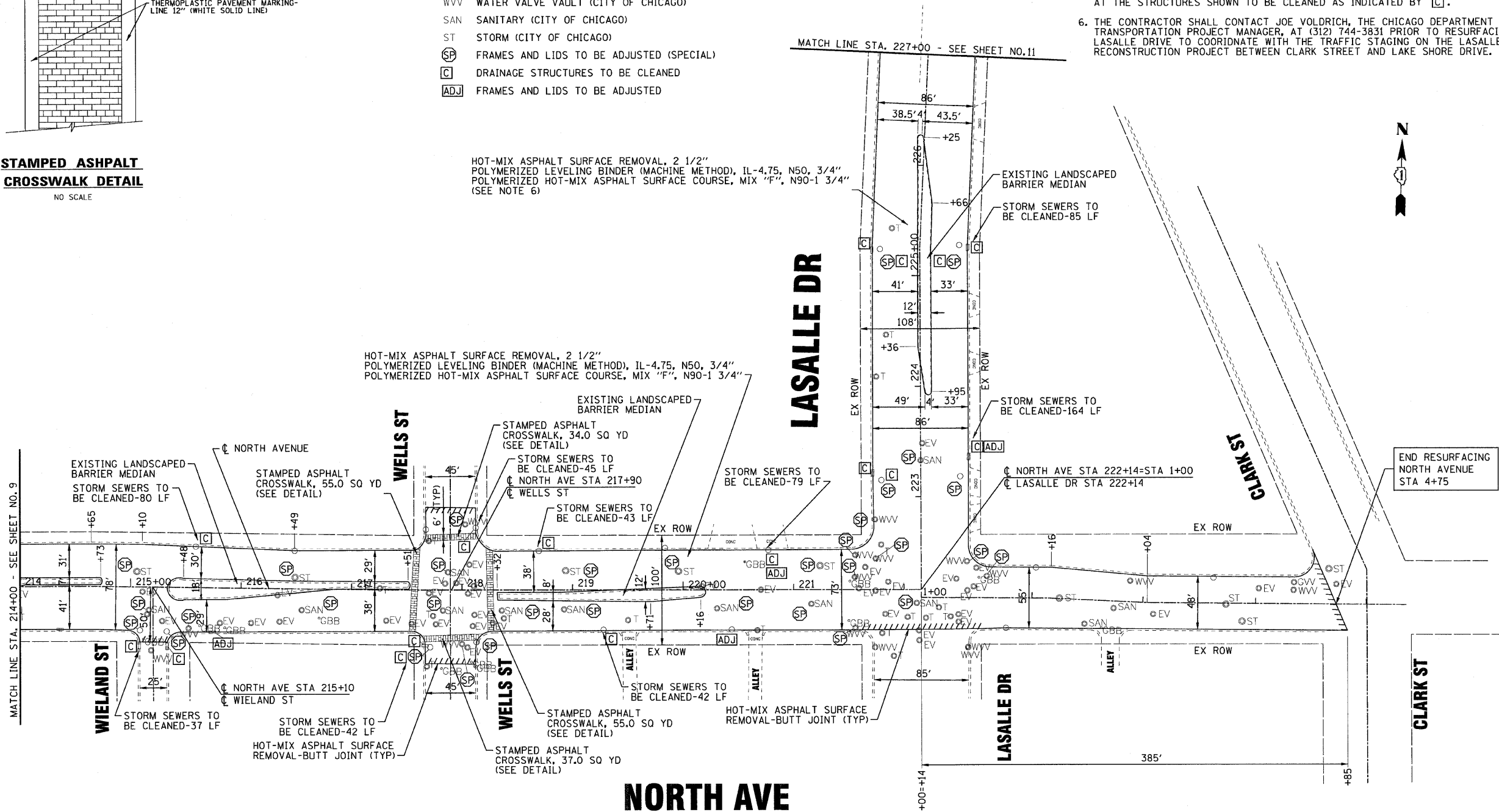
NO SCALE

- LEGEND**
- EXISTING INLET
  - EXISTING CATCH BASIN
  - ⊙ EXISTING MANHOLE
  - GVV GAS VALVE VAULT (ADJUSTMENTS PERFORMED BY OTHERS)
  - GBB GAS B-BOX (ADJUSTMENTS PERFORMED BY OTHERS)
  - EV ELECTRICAL VAULT (ADJUSTMENTS PERFORMED BY OTHERS)
  - T TELEPHONE (ADJUSTMENTS PERFORMED BY OTHERS)
  - WVV WATER VALVE VAULT (CITY OF CHICAGO)
  - SAN SANITARY (CITY OF CHICAGO)
  - ST STORM (CITY OF CHICAGO)
  - SP FRAMES AND LIDS TO BE ADJUSTED (SPECIAL)
  - C DRAINAGE STRUCTURES TO BE CLEANED
  - ADJ FRAMES AND LIDS TO BE ADJUSTED

HOT-MIX ASPHALT SURFACE REMOVAL, 2 1/2"  
 POLYMERIZED LEVELING BINDER (MACHINE METHOD), IL-4.75, N50, 3/4"  
 POLYMERIZED HOT-MIX ASPHALT SURFACE COURSE, MIX "F", N90-1 3/4"  
 (SEE NOTE 6)

**NOTES:**

1. SAW CUTTING PRIOR TO ANY REMOVAL ITEMS NOTED ON THE PLANS OR DIRECTED BY THE ENGINEER SHALL BE CONSIDERED INCLUDED IN THE COST OF THE ITEMS BEING REMOVED.
2. ALL PAVEMENT PATCHING LOCATIONS WILL BE DETERMINED BY THE RESIDENT ENGINEER.
3. ALL COMBINATION CONCRETE CURB AND GUTTER REMOVAL AND REPLACEMENT WILL BE DETERMINED BY THE RESIDENT ENGINEER.
4. THE CONTRACTOR SHALL USE CARE IN REMOVING OR EXCAVATING NEAR ALL EXISTING ITEMS WHICH WILL REMAIN, ANY DAMAGE DONE TO EXISTING ITEMS BY THE CONTRACTOR SHALL BE REPAIRED AT THE CONTRACTOR'S EXPENSE.
5. PAY ITEM X5539700 - STORM SEWERS TO BE CLEANED - SHALL ONLY BE UTILIZED TO CLEAN STORM SEWER LATERAL PIPES BETWEEN INLETS OR CATCH BASINS AND THE MAIN SEWER ONLY AT THE STRUCTURES SHOWN TO BE CLEANED AS INDICATED BY [C].
6. THE CONTRACTOR SHALL CONTACT JOE VOLDRICH, THE CHICAGO DEPARTMENT OF TRANSPORTATION PROJECT MANAGER, AT (312) 744-3831 PRIOR TO RESURFACING OF LASALLE DRIVE TO COORDINATE WITH THE TRAFFIC STAGING ON THE LASALLE DRIVE RECONSTRUCTION PROJECT BETWEEN CLARK STREET AND LAKE SHORE DRIVE.



COPYRIGHT © 2011 BY BAXTER & WOODMAN, INC.  
 STATE OF ILLINOIS - PROFESSIONAL DESIGN FIRM  
 4882000  
 3/29/2011  
 ...:\projects\1100153-wo13-plan5.dwg  
 11/20/2010 10:01:00 AM

3/11/11



DESIGNED - CAC	REVISED - PER IDOT 2-3-11
DRAWN - BCD	REVISED - PER CDOT 2-18-11
CHECKED - RWL	REVISED -
DATE - 12-17-10	FILE - 100153-wo13-Plan5.sht

STATE OF ILLINOIS  
 DEPARTMENT OF TRANSPORTATION

**NORTH AVENUE  
 MILWAUKEE AVENUE TO CLARK STREET  
 ROADWAY PLAN**

SCALE: 1" = 50'

STA. 214+00 TO STA. 227+00

F.A.P. RTE. 307	SECTION 2010-140-RS	COUNTY COOK	TOTAL SHEETS 29	SHEET NO. 10
FED. ROAD DIST. NO. 1 (ILLINOIS) FED. AID PROJECT				
CONTRACT NO. 60N19				