

|           |            |                             |              |           |
|-----------|------------|-----------------------------|--------------|-----------|
| F.A. RTE. | SECTION    | COUNTY                      | TOTAL SHEETS | SHEET NO. |
| VAR       | 2010-161-I | COOK                        | 12           | 1         |
|           |            | ILLINOIS CONTRACT NO. 60N78 |              |           |

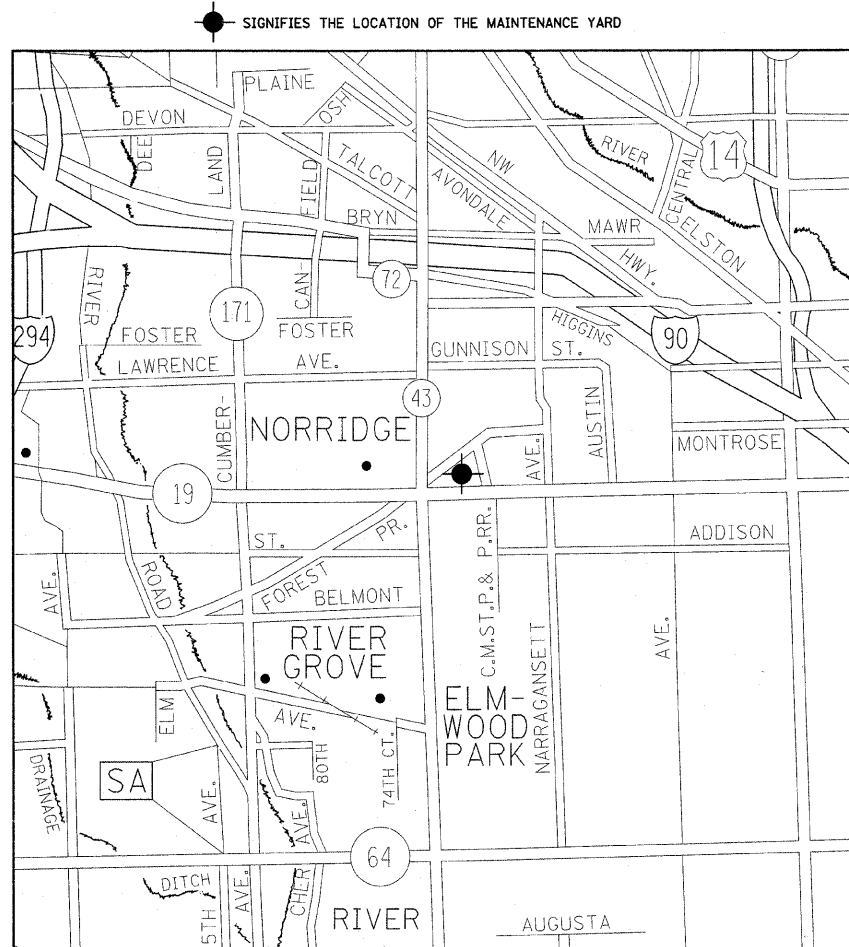
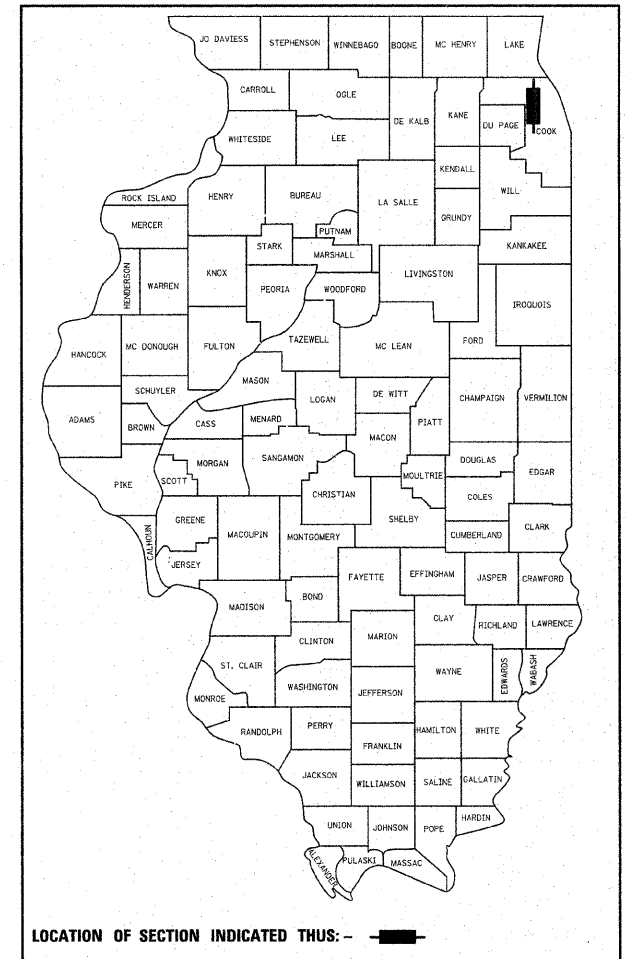
D-91-358-11

STATE OF ILLINOIS  
DEPARTMENT OF TRANSPORTATION  
DIVISION OF HIGHWAYS

# PROPOSED HIGHWAY PLANS

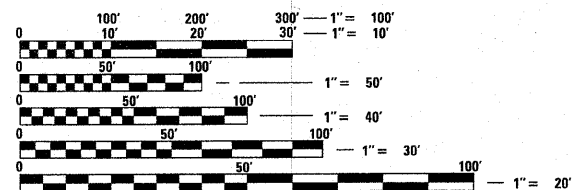
VARIOUS  
SECTION 2010-161-I  
NORTHSIDE MAINTENANCE YARD  
KNEE WALL, FENCING, AND LANDSCAPING  
COOK COUNTY  
C-91-358-11

FOR INDEX OF SHEETS, SEE SHEET NO. 2



JEFFERSON TOWNSHIP

PROJECT IS LOCATED IN THE CITY OF CHICAGO



FULL SIZE PLANS HAVE BEEN PREPARED USING STANDARD ENGINEERING SCALES. REDUCED SIZED PLANS WILL NOT CONFORM TO STANDARD SCALES. IN MAKING MEASUREMENTS ON REDUCED PLANS, THE ABOVE SCALES MAY BE USED.

J.U.L.I.E.  
JOINT UTILITY LOCATION INFORMATION FOR EXCAVATION  
1-800-892-0123  
OR 811

DISTRICT ONE BUREAU OF MAINTENANCE: J. STUMPNER  
MAINTENANCE LANDSCAPE DESIGNER: R. WANNER /M. DEL ROSARIO (847) 705-4171

LOCATION MAP

CONTRACT NO. 60N78

STATE OF ILLINOIS  
DEPARTMENT OF TRANSPORTATION  
DIVISION OF HIGHWAYS

SUBMITTED FEBRUARY 10, 20 11  
Diane M. O'Keefe es  
DEPUTY DIRECTOR OF HIGHWAYS, REGION ENGINEER

March 05 20 11  
Scott E. Stitt P.E. la  
ENGINEER OF DESIGN AND ENVIRONMENT

March 05 20 11  
Christine M. Reed la  
DIRECTOR OF HIGHWAYS, CHIEF ENGINEER

PRINTED BY THE AUTHORITY  
OF THE STATE OF ILLINOIS