

**INDEX OF SHEETS**

- SHEET NO.
- COVER SHEET
  - LEGEND, GENERAL NOTES
  - SUMMARY OF QUANTITIES
  - 65TH STREET PLAN (WILLOW LANE TO CASS AVENUE)
  - 59TH STREET PLAN (TIMBER RIDGE COURT TO RICHMOND AVENUE)
  - TRAUBE AVENUE PLAN (ROSLYN ROAD TO PARK STREET)
  - LINCOLN STREET PLAN (NAPERVILLE ROAD TO STA. 9+36)
  - 60TH STREET PLAN (FAIRVIEW AVENUE TO STA. 12+00)
  - 60TH STREET PLAN (STA. 12+00 TO 23+00)
  - 60TH STREET PLAN (STA. 23+00 TO WILLIAMS STREET)
  - 63RD STREET (RIDGE ROAD TO STA. 10+75)
  - 63RD STREET (STA. 10+75 TO RICHMOND AVENUE)
  - MISCELLANEOUS DETAILS
  - MISCELLANEOUS DETAILS
  - MISCELLANEOUS DETAILS
  - BD-01: DRIVEWAY DETAILS - DISTANCE BETWEEN R.O.W. AND FACE OF CURB & EDGE OF SHOULDER  $\geq 15'$  (4.5M)
  - BD-02: DRIVEWAY DETAILS DISTANCE BETWEEN ROW AND FACE OF CURB  $< 15'$  (4.5M)
  - BD-22: PAVEMENT PATCHING FOR HMA SURFACED PAVEMENT
  - BD-32: BUTT JOINT AND HMA TAPER DETAILS
  - TC-10: TRAFFIC CONTROL AND PROTECTION FOR SIDE ROADS, INTERSECTIONS, AND DRIVEWAYS
  - TC-13: DISTRICT ONE TYPICAL PAVEMENT MARKINGS
  - 60TH STREET CROSS SECTIONS

**CONTACT**

VILLAGE OF WESTMONT  
 ENGINEERING DIVISION  
 CONTACT: NORIEL NORIEGA  
 OFFICE: 630-981-6295  
 FAX: 630-829-4479  
 24 HR: 630-968-2151

BURNS & MCDONNELL  
 CONTACT: ANTHONY BRYANT  
 OFFICE: 630-724-3200  
 FAX: 630-724-3201

DUDOT  
 CONTACT: ROBERT KOLAR  
 OFFICE: 630-407-6900  
 FAX: 630-407-6901

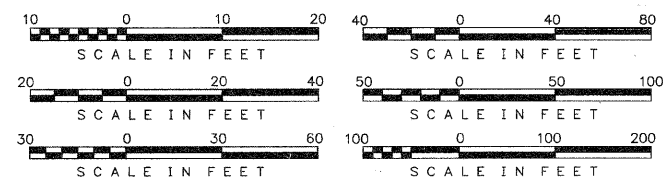
**HIGHWAY STANDARDS**

- 000001-06 STANDARD SYMBOL, ABBREVIATIONS AND PATTERNS
- 424001-05 CURB RAMPS FOR SIDEWALKS
- 542301-03 PRECAST REINFORCED CONCRETE FLARED END
- 542401-01 METAL END SECTION FOR PIPE CULVERTS
- 602001-02 CATCH BASIN TYPE A
- 602011-02 CATCH BASIN TYPE C
- 604021-02 BASE, FRAME AND LIDS TYPE 5
- 701801-04 LANE CLOSURE, MULTILANE, 1W OR 2W CROSSWALK OR SIDEWALK CLOSURE
- 701901-01 TRAFFIC CONTROL DEVICES

**TRAFFIC DATA 2010**

59TH STREET ADT = 3,950  
 POSTED SPEED LIMIT = 25 MPH

63rd STREET ADT = <25,000  
 POSTED SPEED LIMIT = 40 MPH



FULL SIZE PLANS HAVE BEEN PREPARED USING STANDARD ENGINEERING SCALES, REDUCED SIZED PLANS WILL NOT CONFORM TO STANDARD SCALES, IN MAKING MEASUREMENT ON REDUCED PLANS, THE ABOVE SCALES MAY BE USED.

**CONTRACT NO.: 63132**

**LENGTH OF PROJECT**

PROJECT LENGTH GROSS = 1.13 MILES (5944 FT.)  
 NET = 1.00 MILES (5304 FT.)

**DESIGN DESIGNATION - SIDEWALK**

STATE OF ILLINOIS  
 DEPARTMENT OF TRANSPORTATION  
 DIVISION OF HIGHWAYS

**PLANS FOR PROPOSED  
 FEDERAL AID HIGHWAY**

59th Street, 60th Street, 63rd Street, 65th Street, Traube Avenue, Lincoln Street

SECTION NO.: 08-00098-00-SW

PROJECT NO.: CMM-8003 (956)

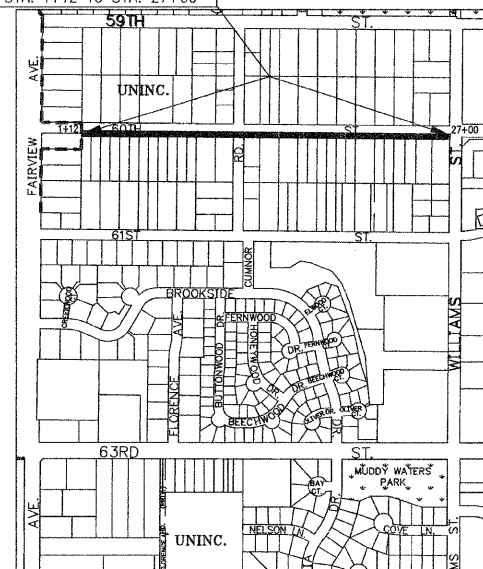
SIDEWALKS

VILLAGE OF WESTMONT

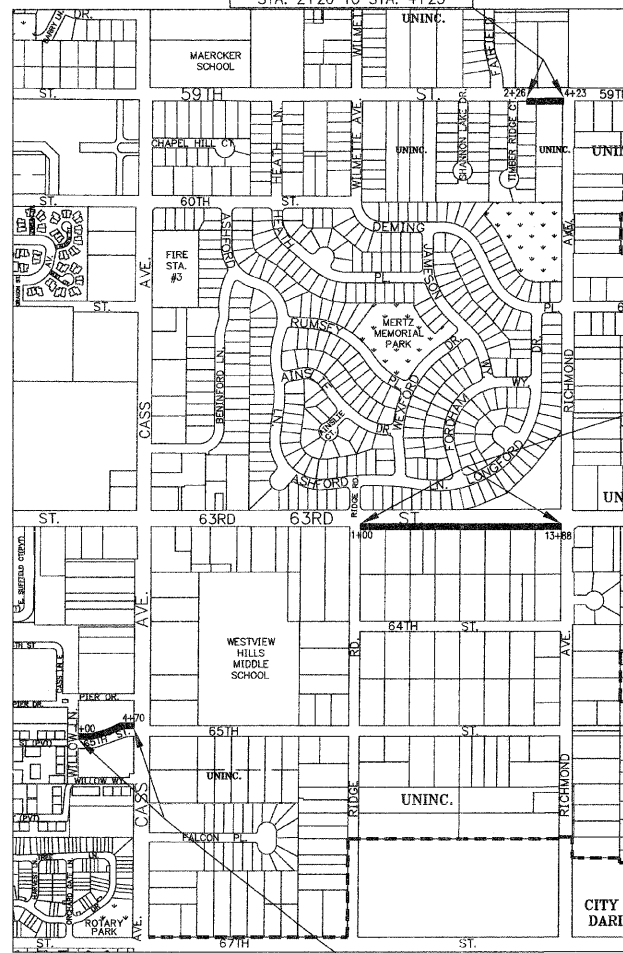
DU PAGE COUNTY

JOB NO.: C-91-213-08

**PROJECT LOCATION**  
 STA. 14+12 TO STA. 27+00



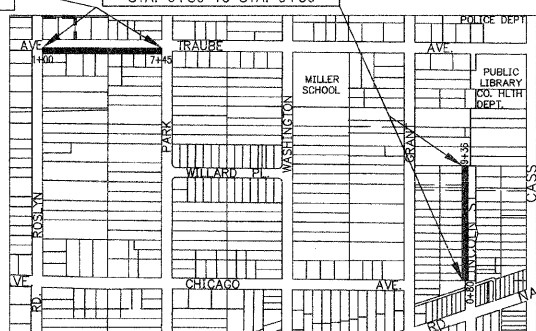
**PROJECT LOCATION**  
 STA. 2+26 TO STA. 4+23



**PROJECT LOCATION**  
 STA. 1+00 TO STA. 13+88

**PROJECT LOCATION**  
 STA. 1+00 TO STA. 7+45

**PROJECT LOCATION**  
 STA. 0+80 TO STA. 9+36



**PROJECT LOCATION**  
 STA. 1+00 TO STA. 4+70

TOWNSHIP: 38 NORTH, DOWNERS GROVE TOWNSHIP  
 RANGE: 11 WEST, 3RD P.M.



**WARNING**



**CALL  
 J.U.L.I.E.  
 BEFORE YOU DIG  
 1-800-892-0123**

F.A.P. RTE.	SECTION	COUNTY	TOTAL SHEETS	SHEET NO.
-	08-00098-00-SW	DUPAGE	22	1
FEDERAL RD. DIST. NO.		ILLINOIS	FEDERAL AID PROJECT	
CONTRACT: 63132				



STATE OF ILLINOIS  
 DEPARTMENT OF TRANSPORTATION  
 DIVISION OF HIGHWAYS

Approved: *[Signature]* MARCH 3, 2011  
 WESTMONT VILLAGE ENGINEER

Passed: MARCH 4, 2011, 2011  
*[Signature]*  
 District Engineer of Local Roads & Streets

Releasing for Bid Based on Limited Review: MARCH 4, 2011, 2011  
*[Signature]*  
 Deputy of Highways, Region 1 Engineer



ANTHONY J. BRYANT, P.E.  
 NO. 062-056612  
 EXP. DATE: 11/30/2011

**PRINTED BY THE AUTHORITY  
 OF THE STATE OF ILLINOIS**



IL DESIGN FIRM NO.  
 184-001310