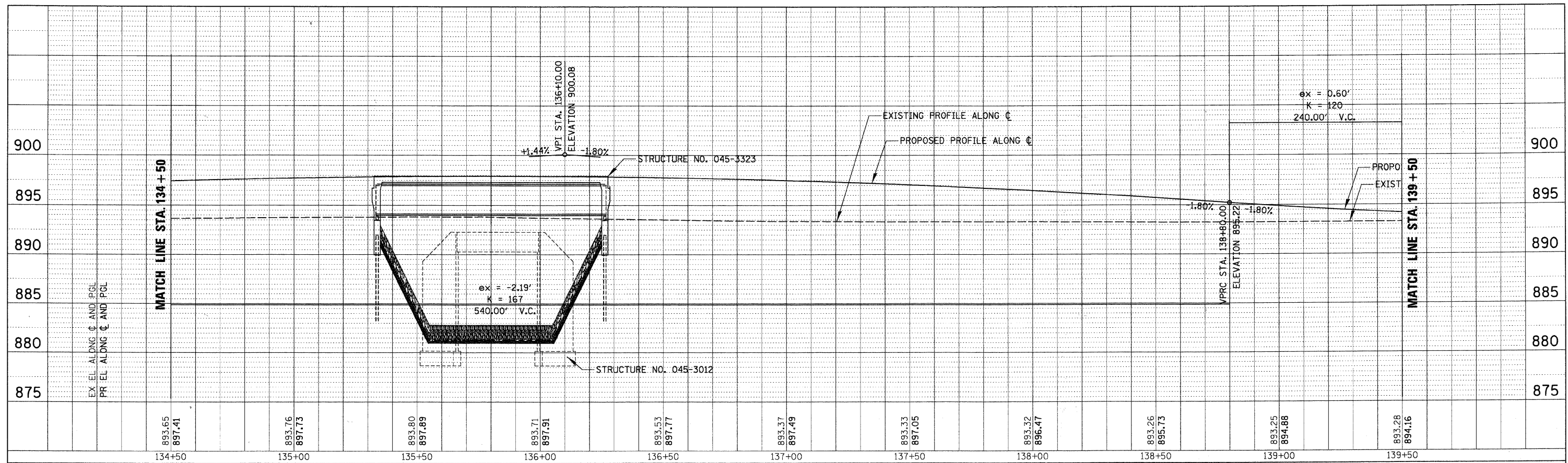


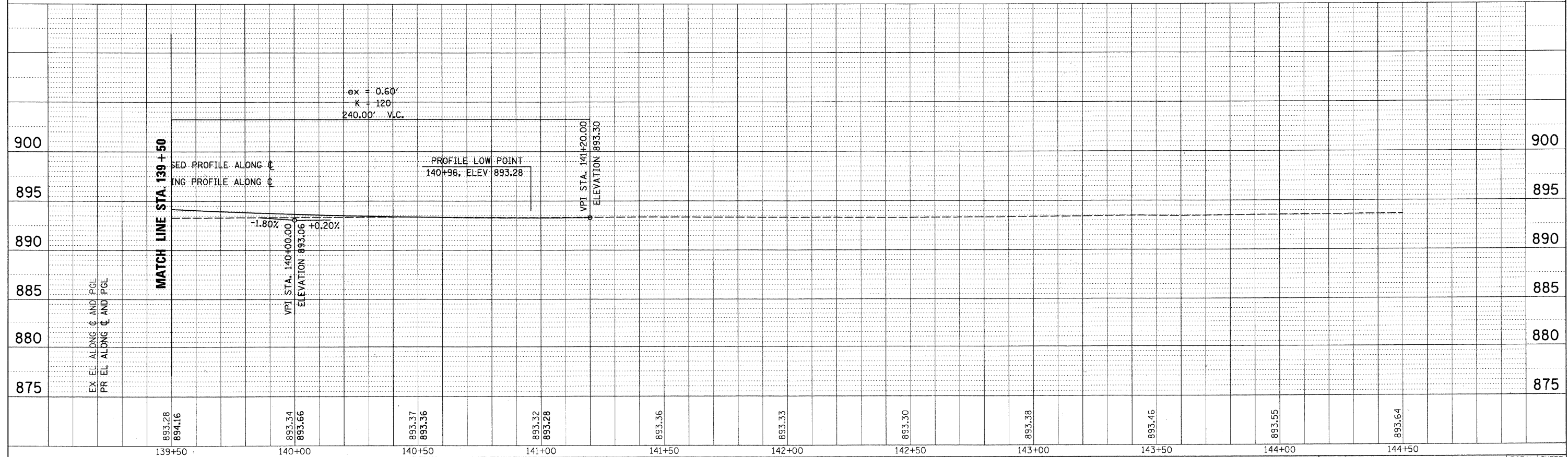
PLAN	SURVEYED	BY	DATE
	FLOTTED		
	NOTE BOOK		
	NO.		

PROFILE	SURVEYED	BY	DATE
	FLOTTED		
	NOTE BOOK		
	NO.		

CHRISTOPHER B. BURKE ENGINEERING, LTD.  
 9575 W. Higgins Road, Suite 600  
 Rosemont, Illinois 60018  
 (847) 823-0500



893.65	897.41	893.76	897.73	893.80	897.89	893.71	897.91	893.53	897.77	893.37	897.49	893.33	897.05	893.32	896.47	893.26	895.73	893.25	894.88	893.28	894.16
134+50		135+00		135+50		136+00		136+50		137+00		137+50		138+00		138+50		139+00		139+50	



893.28	894.16	893.34	893.66	893.37	893.36	893.32	893.28	893.36	893.33	893.30	893.38	893.46	893.55	893.64							
139+50		140+00		140+50		141+00		141+50		142+00		142+50		143+00		143+50		144+00		144+50	

FILE NAME =	USER NAME = BLUKE
DESIGNED - RCB	REVISED -
DRAWN - PMM	REVISED -
CHECKED - JGS	REVISED -
DATE -	REVISED -

DESIGNED - RCB	REVISED -
DRAWN - PMM	REVISED -
CHECKED - JGS	REVISED -
DATE -	REVISED -

STATE OF ILLINOIS  
 DEPARTMENT OF TRANSPORTATION

FAS 0130 - BIG TIMBER ROAD			
PROFILE			
SCALE: 1"=20'	SHEET NO. OF	SHEETS	STA. 134+50 TO STA. 144+50

F.A.S. RTE.	SECTION	COUNTY	TOTAL SHEETS	SHEET NO.
0130	01-00266-00-BR	KANE	70	20
CONTRACT NO.				
FED. ROAD DIST. NO. 1 ILLINOIS FED. AID PROJECT BRM-8003043				