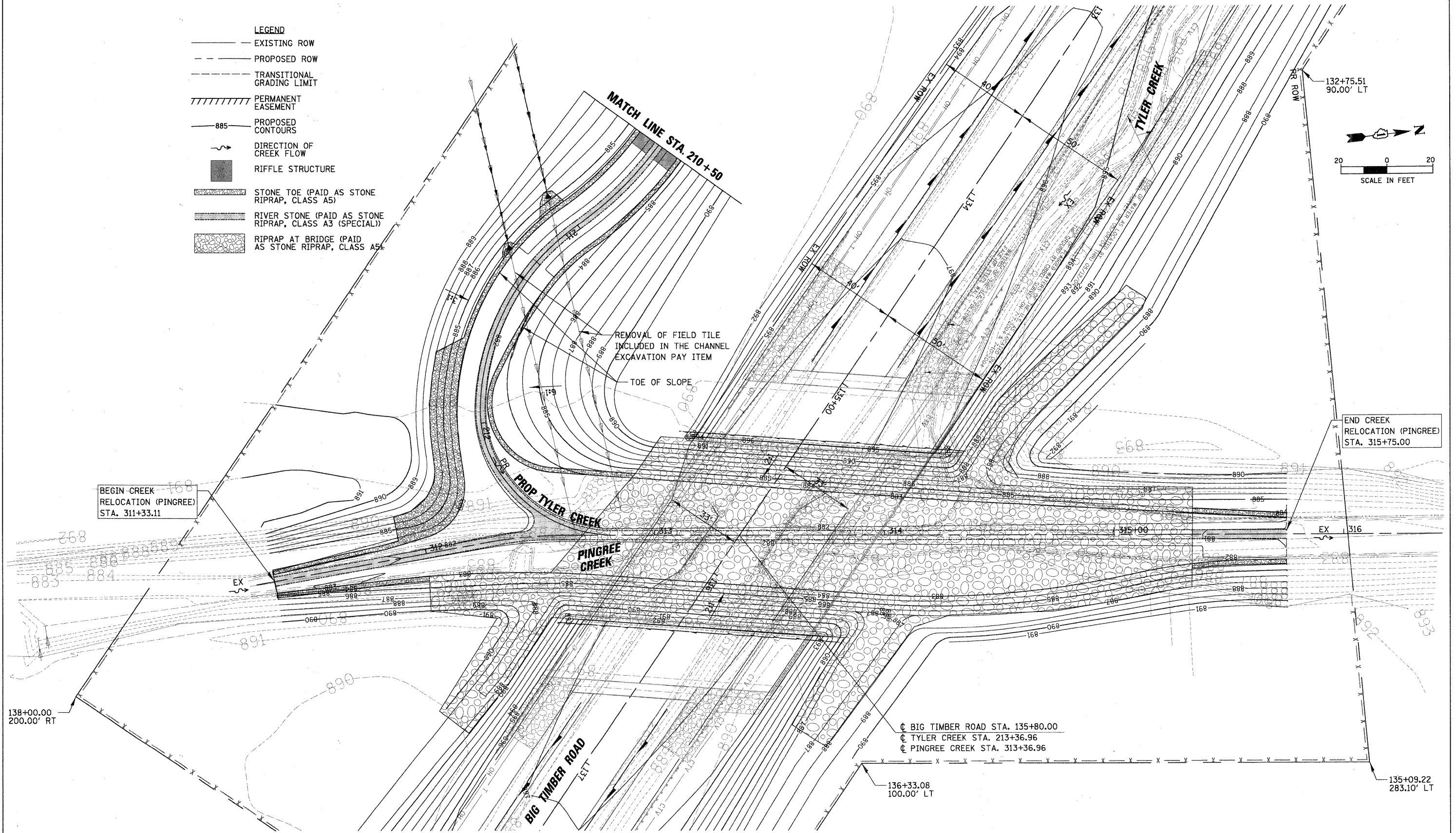


- LEGEND**
- EXISTING ROW
  - - - PROPOSED ROW
  - - - TRANSITIONAL GRADING LIMIT
  - //// PERMANENT EASEMENT
  - 885 PROPOSED CONTOURS
  - ~ DIRECTION OF CREEK FLOW
  - RIFFLE STRUCTURE
  - ▨ STONE TOE (PAID AS STONE RIPRAP, CLASS A5)
  - ▩ RIVER STONE (PAID AS STONE RIPRAP, CLASS A3 (SPECIAL))
  - ▧ RIPRAP AT BRIDGE (PAID AS STONE RIPRAP, CLASS A5)



CHRISTOPHER B. BURKE ENGINEERING, LTD.  
 9575 W. Higgins Road, Suite 600  
 Rosemont, Illinois 60018  
 (847) 823-0500



FILE NAME =	USER NAME = BLUKE	DESIGNED - BLL	REVISED -
\\kane\county\04198\c\1.2\SGP04198.2-01.SHT		DRAWN - PMM	REVISED -
PLOT SCALE = 20'		CHECKED - JGS	REVISED -
PLOT DATE = 2/7/2011		DATE - 02/07/2011	REVISED -

STATE OF ILLINOIS  
 DEPARTMENT OF TRANSPORTATION

FAS 0130 - BIG TIMBER ROAD  
 TYLER CREEK RELOCATION GRADING PLAN

SCALE: 1"=20' SHEET NO. OF SHEETS STA. 311+25 TO STA. 316+00

F.A.S. RTE.	SECTION	COUNTY	TOTAL SHEETS	SHEET NO.
0130	01-00266-00-BR	KANE	70	24
FED. ROAD DIST. NO. 1 ILLINOIS FED. AID PROJECT BRM-80030431			CONTRACT NO. 63196	