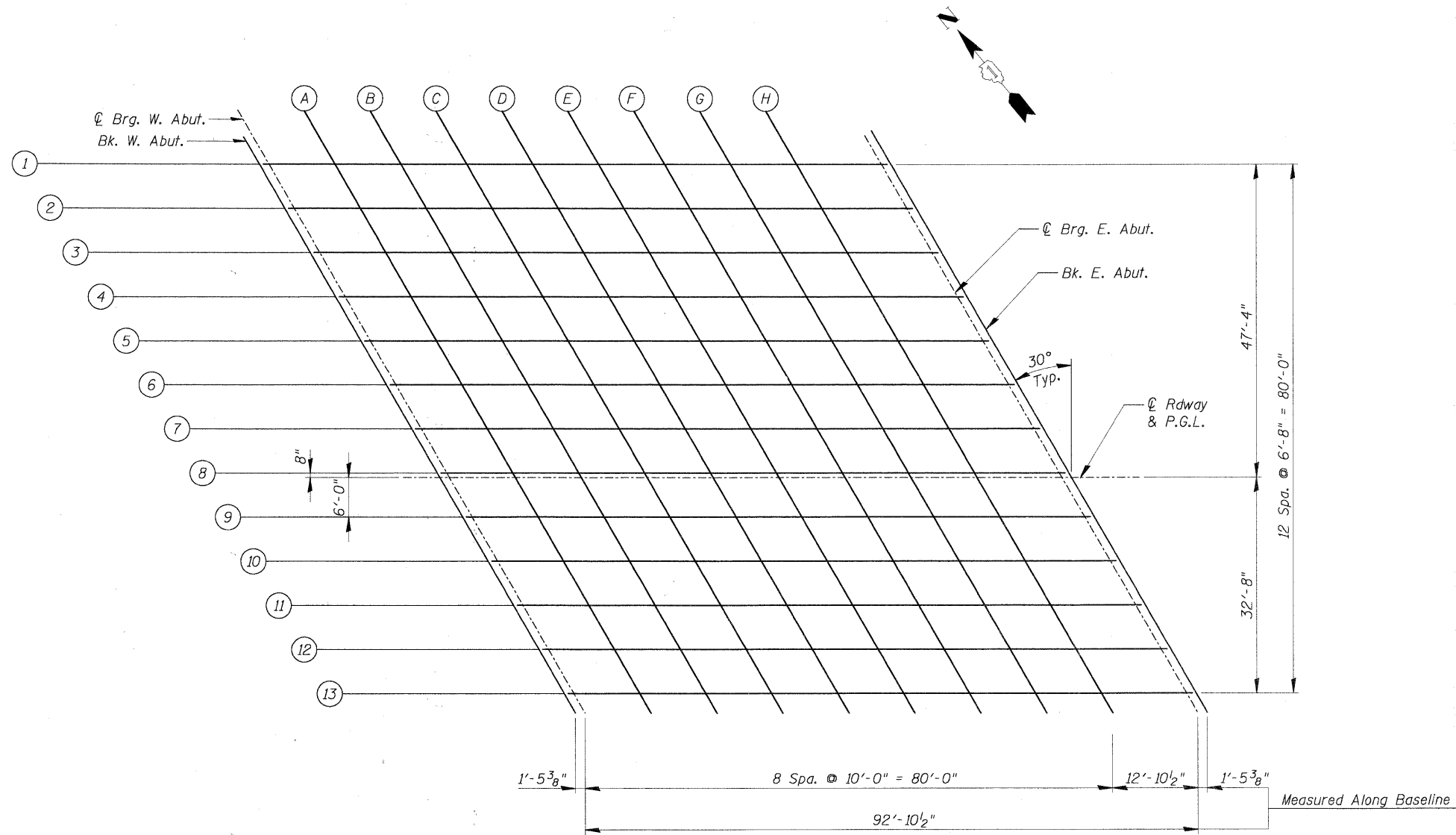
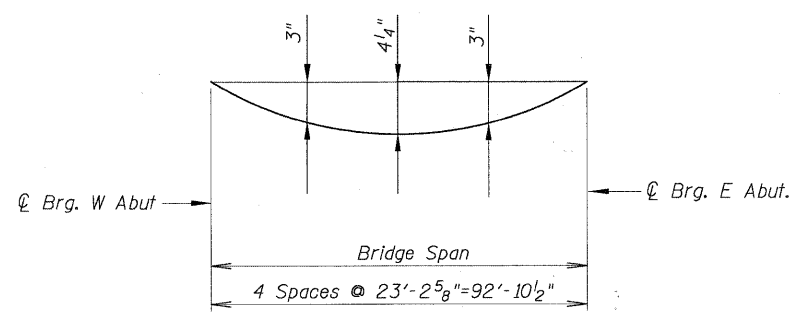


CHRISTOPHER B. BURKE ENGINEERING, LTD.
 9575 W. Higgins Road, Suite 600
 Rosemont, Illinois 60018
 (647) 823-0500



PLAN

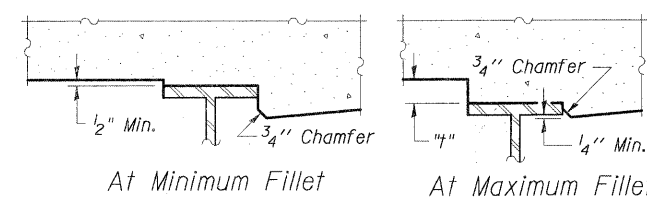


DEAD LOAD DEFLECTION DIAGRAM

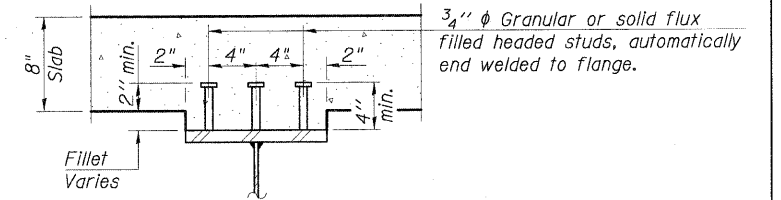
(Includes Weight of Concrete Deck And All Superimposed Dead Load Except Future Wearing Surfaces)

NOTE:

- The deflections given above are not to be used in the field if the Engineer is working from the grade elevations adjusted for dead load deflection as shown on Sheets S-4 and S-5.
- Offsets Are Positive South Of The Profile Gradeline.



EXTERIOR BEAMS



INTERIOR BEAMS

NOTE:

To determine "t": After all structural steel has been erected, elevations of the top flanges of the beams shall be taken at intervals shown above. These elevations subtracted from the "Theoretical Grade Elevations Adjusted for Dead Load Deflection" shown on Drawing No. S-4 & S-5 minus slab thickness, equals the fillet heights "t" above top flange of beams.

FILLET HEIGHTS

FILE NAME =	USER NAME = BLUKE	DESIGNED -- MM	REVISED --
N:\kanecounty\04198\STRUCT_2\04198-S3.SHT		DRAWN -- PDR	REVISED --
	PLOT SCALE = 1"	CHECKED -- MM	REVISED --
	PLOT DATE = 2/7/2011	DATE --	REVISED --

STATE OF ILLINOIS
 DEPARTMENT OF TRANSPORTATION

TOP OF DECK PLAN AND DETAILS

SHEET NO. S-3 OF S-21

F.A.S. RTE. 0130	SECTION 01-00266-00-BR	COUNTY KANE	TOTAL SHEETS 70	SHEET NO. 40
CONTRACT NO. 63196			FED. ROAD DIST. NO. 1 ILLINOIS FED. AID PROJECT BRM-80030431	

F.A.S. 0130 - BIG TIMBER ROAD
 OVER TYLER AND PINGREE CREEK
 SECTION 01-00266-00-BR
 KANE COUNTY, ILLINOIS
 STA. 135+80.00
 STRUCTURE NO. 045-3323