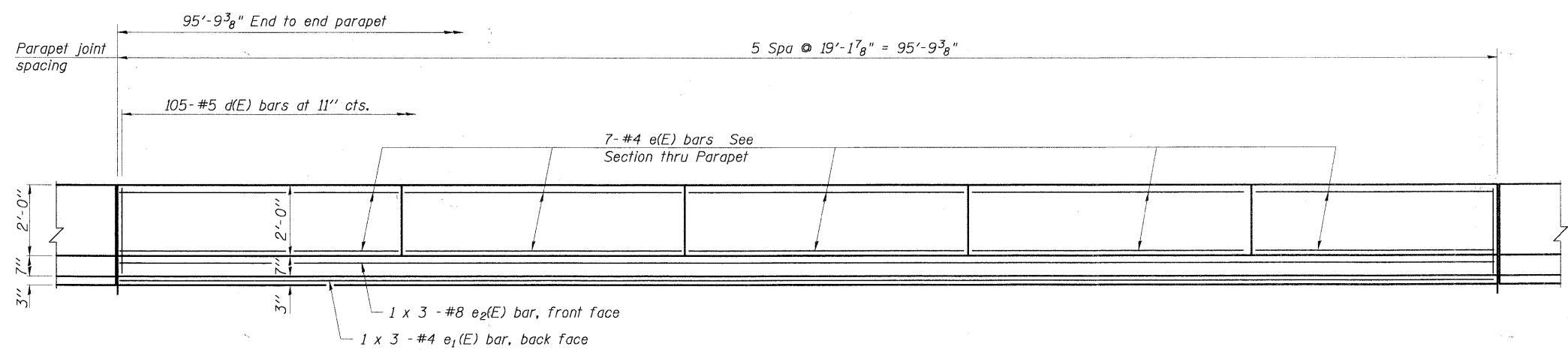
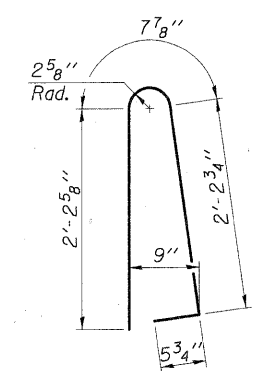


INSIDE ELEVATION OF NORTH PARAPET

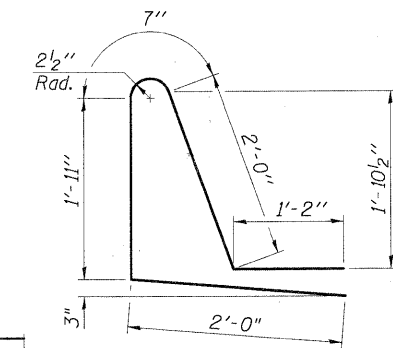


INSIDE ELEVATION OF SOUTH PARAPET

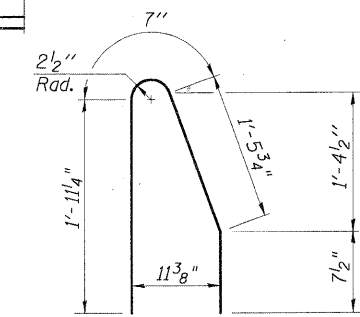
MINIMUM BAR LAP
 (Parapet)
 #4 bar = 1'-4"
 #8 bar = 3'-5"



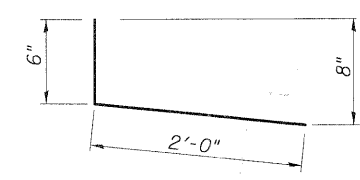
BAR d(E)



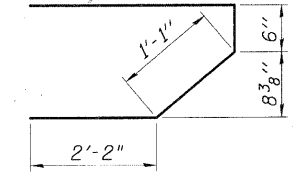
BAR d1(E)



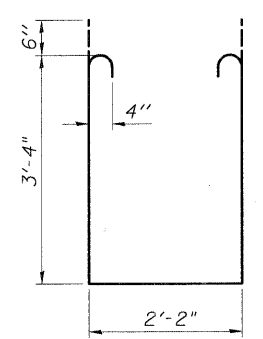
BAR d2(E)



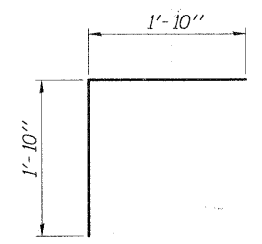
BAR d3(E)



BAR s(E)



BAR s1(E)

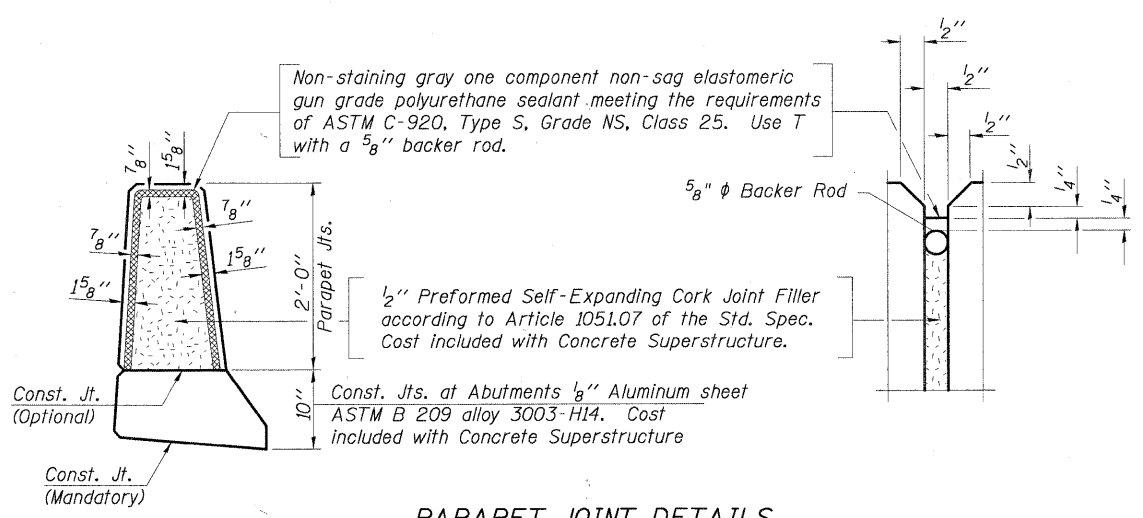


BAR v(E)

**SUPERSTRUCTURE
 BILL OF MATERIAL**

Bar	No.	Size	Length	Shape
a(E)	288	#5	32'-6"	—
a1(E)	144	#5	23'-6"	—
a2(E)	144	#6	6'-6"	—
a3(E)	230	#5	24'-3"	—
a4(E)	115	#5	40'-0"	—
a5(E)	12	#5	34'-6"	—
b(E)	264	#5	33'-0"	—
b1(E)	264	#5	25'-3"	—
c(E)				
d(E)	210	#5	5'-7"	U
d1(E)	105	#5	7'-10"	U
d2(E)	105	#5	4'-8"	U
d3(E)	105	#5	2'-6"	L
e(E)	70	#4	18'-9"	—
e1(E)	6	#4	32'-10"	—
e2(E)	6	#8	34'-3"	—
f(E)				
g(E)				
h(E)				
i(E)				
j(E)				
k(E)				
l(E)				
m(E)	12	#6	34'-9"	—
m1(E)	18	#6	35'-3"	—
m2(E)	52	#6	11'-0"	—
m3(E)	24	#6	7'-5"	—
m4(E)	4	#6	3'-0"	—
n(E)				
o(E)				
p(E)				
q(E)				
r(E)				
s(E)	204	#5	6'-9"	U
s1(E)	180	#4	9'-10"	U
t(E)				
u(E)	176	#5	3'-8"	L
v(E)				
w(E)				
x(E)				
y(E)				
z(E)				
Reinforcement Bars, Epoxy Coated		Pound	52,220	
Concrete Superstructure		Cu. Yds.	299.1	
Bar Splicers		Each	176	

Bars indicated thus 1 x 3 - #5 etc. indicates 1 line of bars with 3 lengths per line.



PARAPET JOINT DETAILS

FILE NAME =	USER NAME = BLUKE	DESIGNED - MM	REVISED -
N:\kanecounty\04198\STRUCT_2\04198-S10.SHT		DRAWN - PDR	REVISED -
	PLOT SCALE = 1'	CHECKED - MM	REVISED -
	PLOT DATE = 2/7/2011	DATE -	REVISED -

STATE OF ILLINOIS
 DEPARTMENT OF TRANSPORTATION

PARAPET DETAILS
 SHEET NO. S-10 OF S-21

F.A.S. RTE.	SECTION	COUNTY	TOTAL SHEETS	SHEET NO.
0130	01-00266-00-BR	KANE	70	47
CONTRACT NO. 63196				
FED. ROAD DIST. NO. 1 [ILLINOIS] FED. AID PROJECT BRM-80030431				

F.A.S. 0130 - BIG TIMBER ROAD
 OVER TYLER AND PINGREE CREEK
 SECTION 01-00266-00-BR
 KANE COUNTY, ILLINOIS
 STA. 135+80.00
 STRUCTURE NO. 045-3323