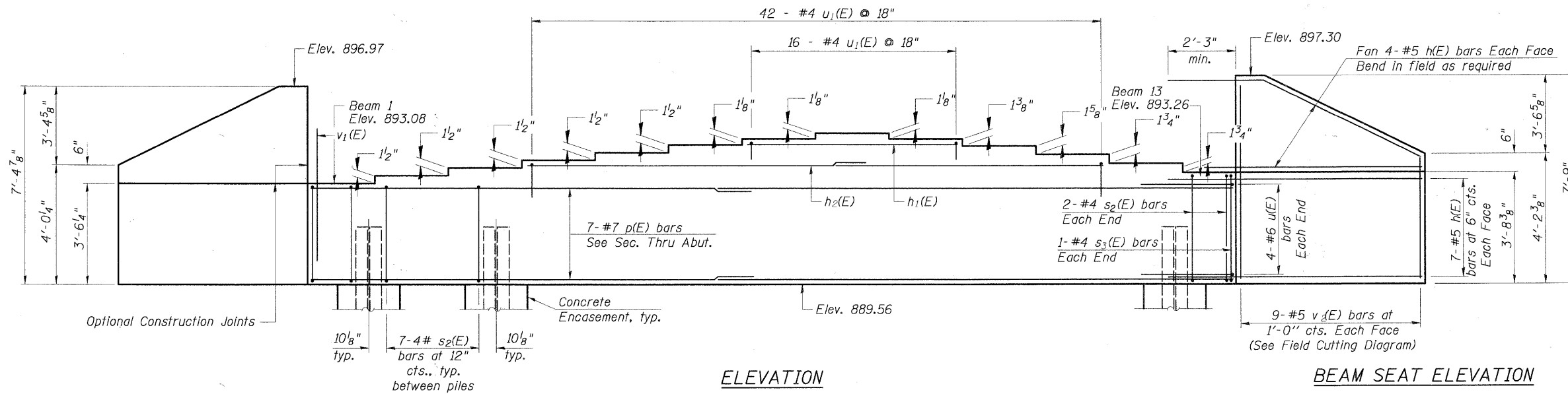
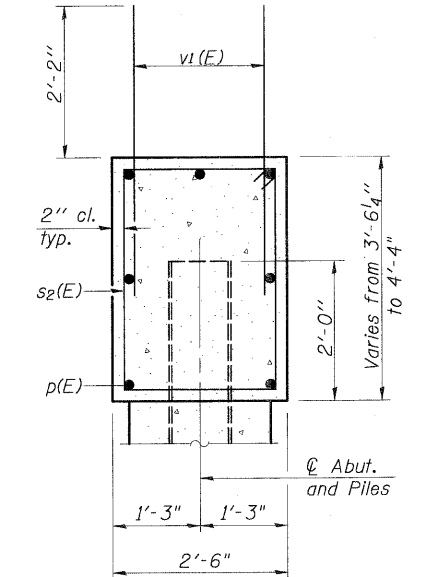


Note: Pour steps monolithically with cap.



ELEVATION

BEAM SEAT ELEVATION



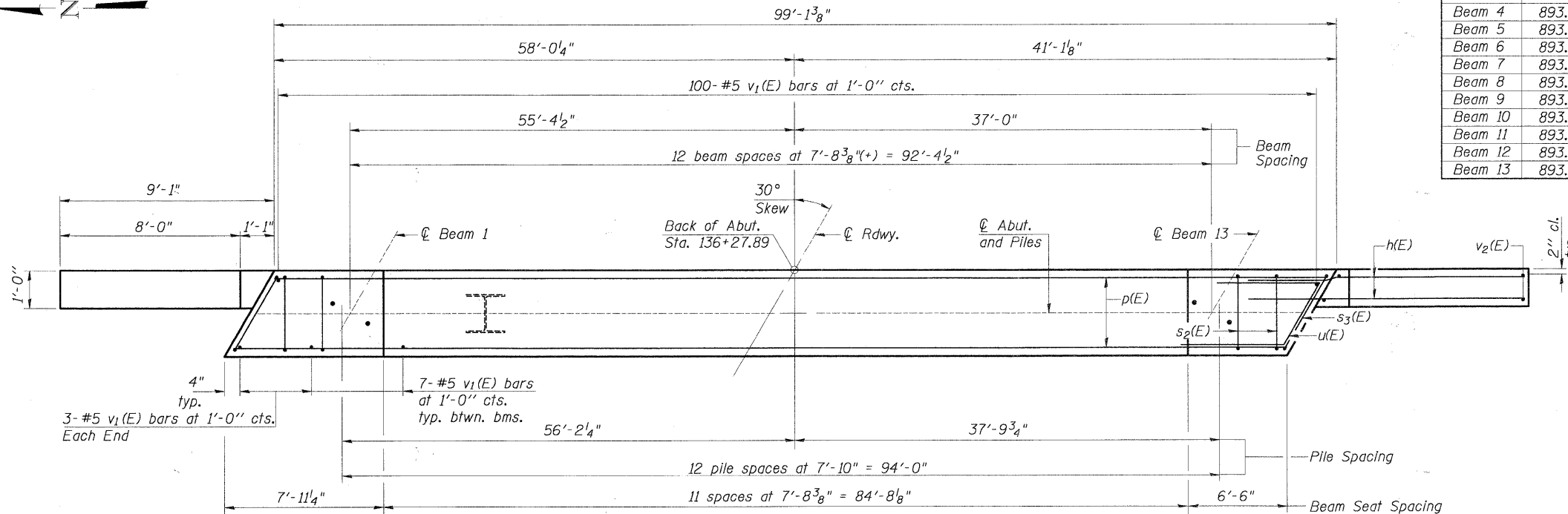
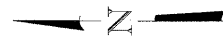
SEC. THRU ABUT.

Beam	Elevation
Beam 1	893.084
Beam 2	893.213
Beam 3	893.341
Beam 4	893.467
Beam 5	893.593
Beam 6	893.718
Beam 7	893.809
Beam 8	893.898
Beam 9	893.807
Beam 10	893.695
Beam 11	893.556
Beam 12	893.409
Beam 13	893.261

BILL OF MATERIAL

Bar	No.	Size	Length	Shape
h(E)	44	#5	11'-4"	—
h1(E)	2	#5	22'-9"	—
h2(E)	4	#5	31'-8"	—
p(E)	21	#7	35'-7"	—
s2(E)	88	#4	11'-5"	□
s3(E)	2	#4	12'-1"	□
u(E)	8	#6	7'-11"	—
u1(E)	58	#4	3'-8"	—
v1(E)	190	#5	4'-4"	—
v2(E)	18	#5	10'-11"	—
Concrete Structures	Cu. Yd.		40.30	
Reinforcement Bars, Epoxy Coated	Pound		4210	
Structure Excavation	Cu. Yd.		110	
Furnishing Steel	Foot		852	
Piles HP12x53	Foot		852	
Driving Piles	Foot		852	
Test Pile HP12x53	Each		1	
Concrete Encasement	Cu. Yd.		4.5	
Anchor Bolts, 1"	Each		26	

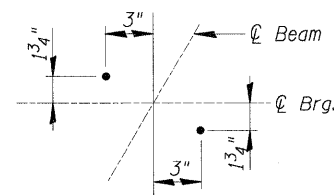
NOTE: Welded Wire Fabric Around Pile is Included In Cost of "Concrete Encasement".



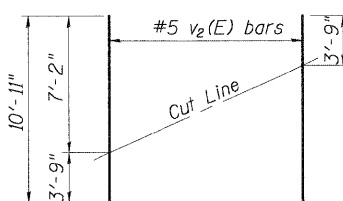
PLAN

PILE DATA

Type: Steel HP 12x53
 Nominal Required Bearing: 360 kips
 Allowable Resistance Available: 120 kips
 Est. Length: 71 ft.
 No. Production Piles: 12
 No. Test Piles: 1

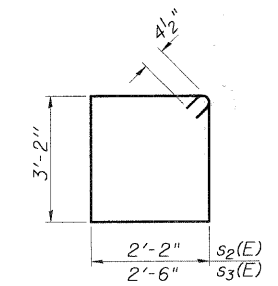


ANCHOR BOLT LAYOUT

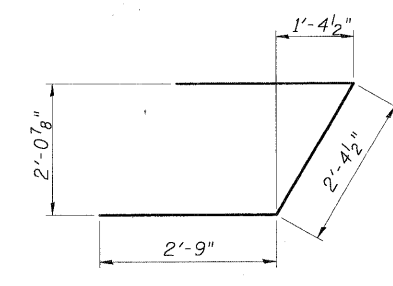


FIELD CUTTING DIAGRAM

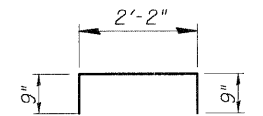
Order v2(E) full length. Cut as shown and use remainder of bars in opposite face.



BAR s2(E) & s3(E)



BAR u(E)



BAR u1(E)

F.A.S. 0130 - BIG TIMBER ROAD OVER TYLER AND PINGREE CREEK SECTION 01-00266-00-BR KANE COUNTY, ILLINOIS STA. 135+80.00 STRUCTURE NO. 045-3232

CHRISTOPHER B. BURKE ENGINEERING, LTD.
 8575 W. Higgins Road, Suite 600
 Rosemont, Illinois 60018
 (847) 823-0500



FILE NAME =	USER NAME = BLUKE	DESIGNED - MM	REVISED -
N:\kanecounty\84198\STRUCT_2\84198-516.SHT		DRAWN - PDR	REVISED -
PLOT SCALE = 1"		CHECKED - MM	REVISED -
PLOT DATE = 2/7/2011		DATE -	REVISED -

STATE OF ILLINOIS
 DEPARTMENT OF TRANSPORTATION

EAST ABUTMENT DETAILS

SHEET NO. S-16 OF S-21

F.A.S. RTE.	SECTION	COUNTY	TOTAL SHEETS	SHEET NO.
0130	01-00266-00-BR	KANE	70	53
CONTRACT NO. 63196			FED. ROAD DIST. NO. 1 ILLINOIS FED. AID PROJECT BRM-80030433	