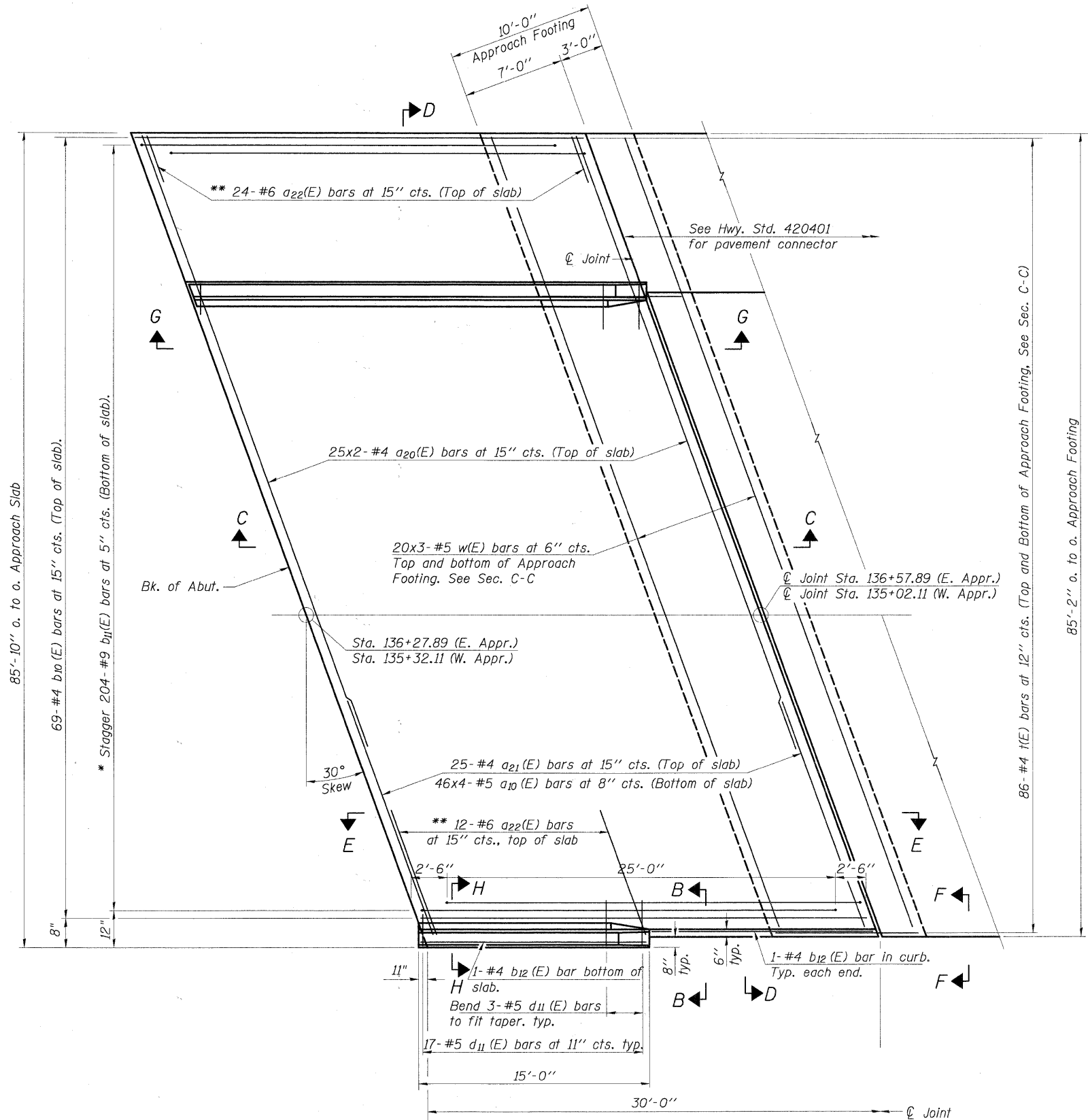
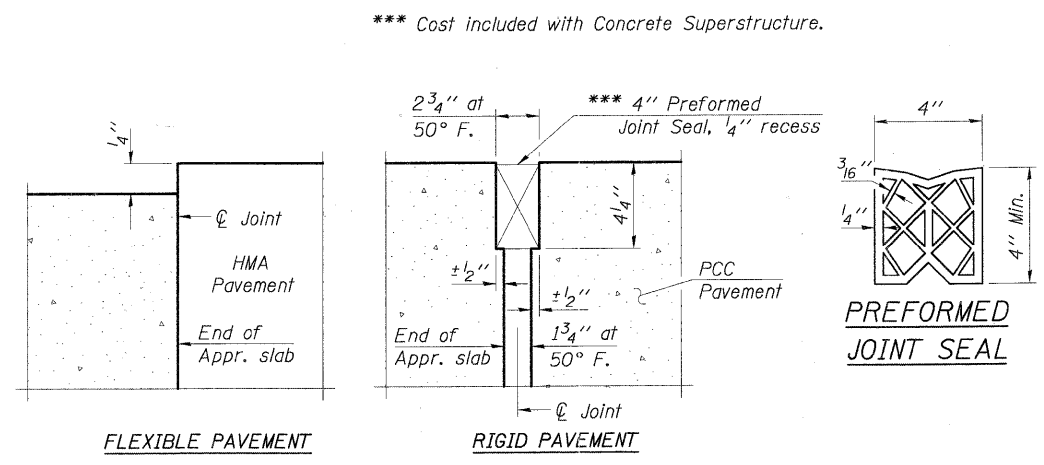


Notes:
See sheet S-19 for Sections C-C & D-D and View E-E.
All $a_n(E)$ bars spacings measured along ϕ Rdwy.

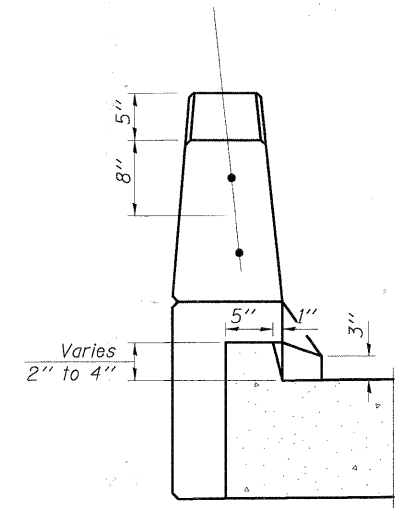


PLAN-EAST APPROACH SLAB (MIRROR FOR WEST APPROACH)

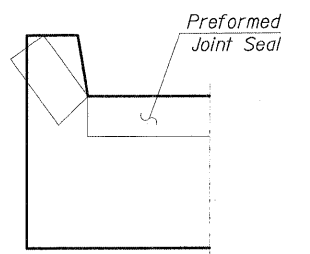
* Tilt #9 $b_{11}(E)$ bars as required to maintain clearance.
** Space between $a_{20}(E)$ and $a_{21}(E)$ bars.



DETAIL A



VIEW B-B



VIEW F-F

MIN. BAR LAP	
#4	1'-4"
#5	1'-8"
#6	2'-7"

CHRISTOPHER B. BURKE ENGINEERING, LTD.
3575 W. Higgins Road, Suite 600
Rosemont, Illinois 60018
(847) 923-0500



FILE NAME =	USER NAME = BLUKE	DESIGNED - MM	REVISED -
N:\kanecounty\04198\STRUCT.2\04198-S18.SHT		DRAWN - PDR	REVISED -
PLOT SCALE = 1"		CHECKED - MM	REVISED -
PLOT DATE = 2/7/2011		DATE -	REVISED -

STATE OF ILLINOIS
DEPARTMENT OF TRANSPORTATION

BRIDGE APPROACH SLAB DETAILS

SHEET NO. S-18 OF S-21

F.A.S. RTE.	SECTION	COUNTY	TOTAL SHEETS	SHEET NO.
0130	01-00266-00-BR	KANE	70	55
CONTRACT NO. 63196				
FED. ROAD DIST. NO. 1 [ILLINOIS] FED. AID PROJECT BRM-80031043				

F.A.S. 0130 - BIG TIMBER ROAD
OVER TYLER AND PINGREE CREEK
SECTION 01-00266-00-BR
KANE COUNTY, ILLINOIS
STA. 135+80.00
STRUCTURE NO. 045-3323