

F.A.U. RTE.	SECTION	COUNTY	TOTAL SHEETS	SHEET NO.
	10-00056-00-SW	DuPAGE	26	1
	ILLINOIS	CONTRACT NO. 63537		

STATE OF ILLINOIS
DEPARTMENT OF TRANSPORTATION
DIVISION OF HIGHWAYS

PLANS FOR PROPOSED
FEDERAL AID HIGHWAY

DEVON AVENUE
OGDEN AVENUE TO MIDDLETON AVENUE
AND AT SCHIESHER ELEMENTARY SCHOOL
SIDEWALK CONSTRUCTION
SECTION: 10-00056-00-SW
PROJECT: SRTS-4009(067)
VILLAGE OF LISLE
DuPAGE COUNTY
C-40-011-10

FOR INDEX OF SHEETS, SEE SHEET NO. 2

TRAFFIC DATA

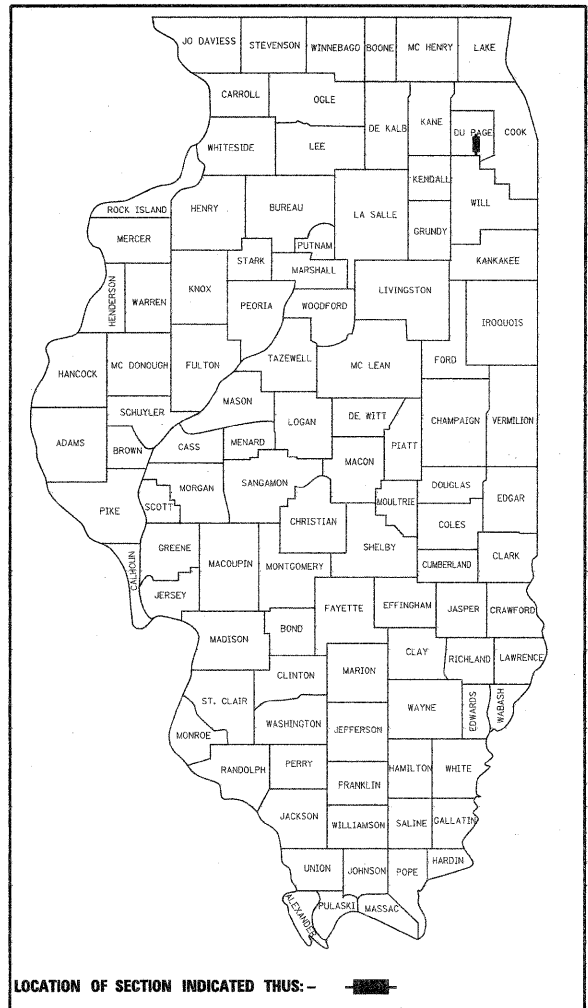
ADT:

DEVON AVENUE = 500

POSTED SPEED LIMIT:

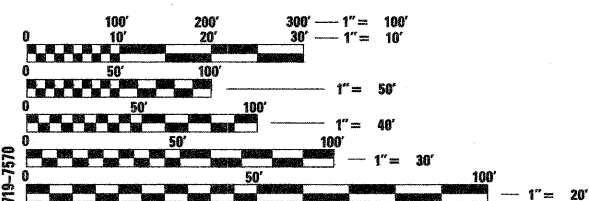
DEVON AVENUE = 30 MPH

DESIGN DESIGNATION: LOCAL ROAD



PROGRAM AND OFFICE ENGINEER: CHARLES F. RIDDLE, P.E. (847) 705-4406, SCHAUMBURG, IL
CONSULTANT: JAMES J. BENES & ASSOCIATES, INC. (630) 719-7570

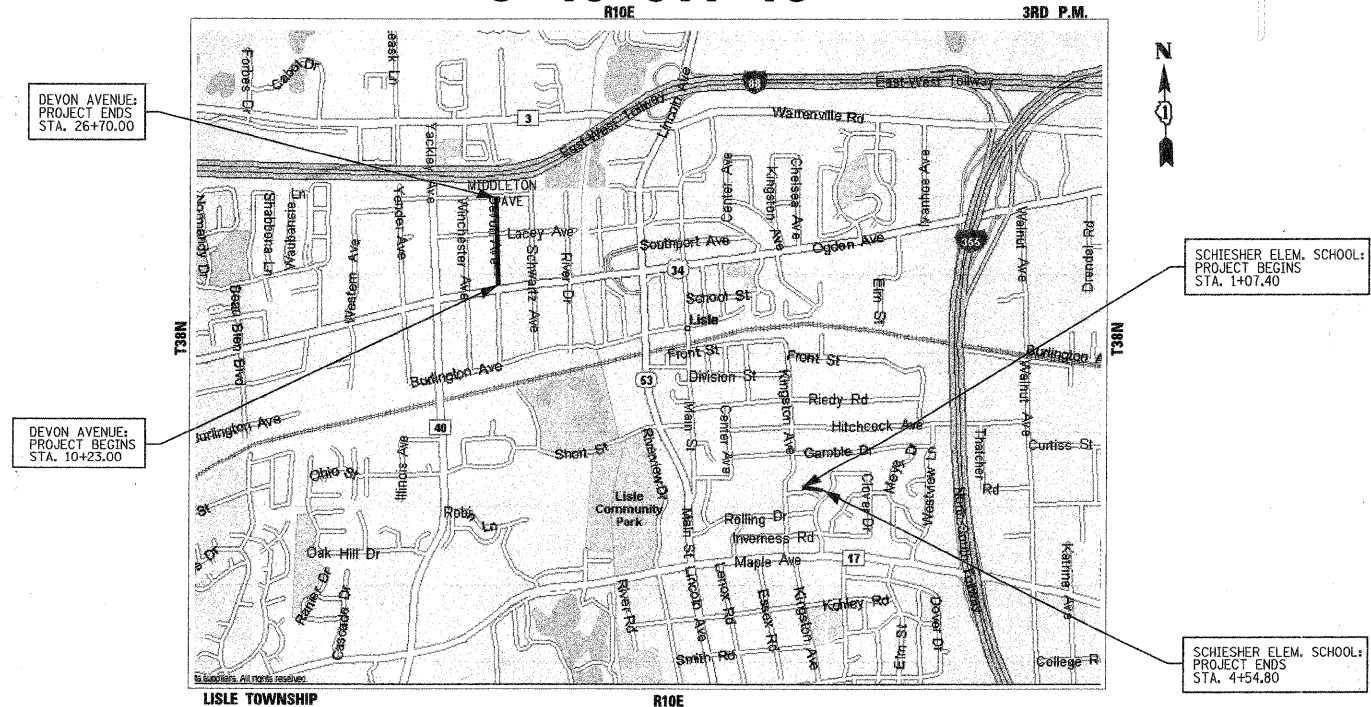
PROJECT LOCATED IN
VILLAGE OF LISLE



FULL SIZE PLANS HAVE BEEN PREPARED USING STANDARD ENGINEERING SCALES. REDUCED SIZED PLANS WILL NOT CONFORM TO STANDARD SCALES. IN MAKING MEASUREMENTS ON REDUCED PLANS, THE ABOVE SCALES MAY BE USED.

J.U.L.I.E.
JOINT UTILITY LOCATION INFORMATION FOR EXCAVATION
1-800-892-0123
OR 811

CONTRACT NO. 63537



LOCATION MAP
SCALE: NTS
GROSS & NET LENGTH OF PROJECT: 1,995 FT. (0.38 MILES)

STATE OF ILLINOIS
DEPARTMENT OF TRANSPORTATION
DIVISION OF HIGHWAYS

APPROVED: 1-25-2011
James J. Benes
Village of Lisle, Director of Public Works

PASSED: FEBRUARY 15 2011
Charles F. Riddle
District 1 Engineer of Local Roads & Streets

Releasing for Bid
Based on Limited
Review FEBRUARY 15, 2011
Diane M. O'Keefe
Deputy Director of Highways, Region 1 Engineer

PRINTED BY AUTHORITY OF THE STATE OF ILLINOIS
JAMES J. BENES & ASSOCIATES, INC.

JAMES J. BENES & ASSOCIATES
CONSULTING ENGINEERS
950 WARRENVILLE ROAD, SUITE 101
LISLE, IL 60532
(630) 719-7570
SIGNATURE: *James J. Benes*
DATE: 1/25/11
ILL. LICENSE NO: 062-034438
EXP. DATE: NOVEMBER 30, 2011
FIELD: JAMES J. BENES AND ASSOCIATES, INC.
CIVIL ENGINEERING