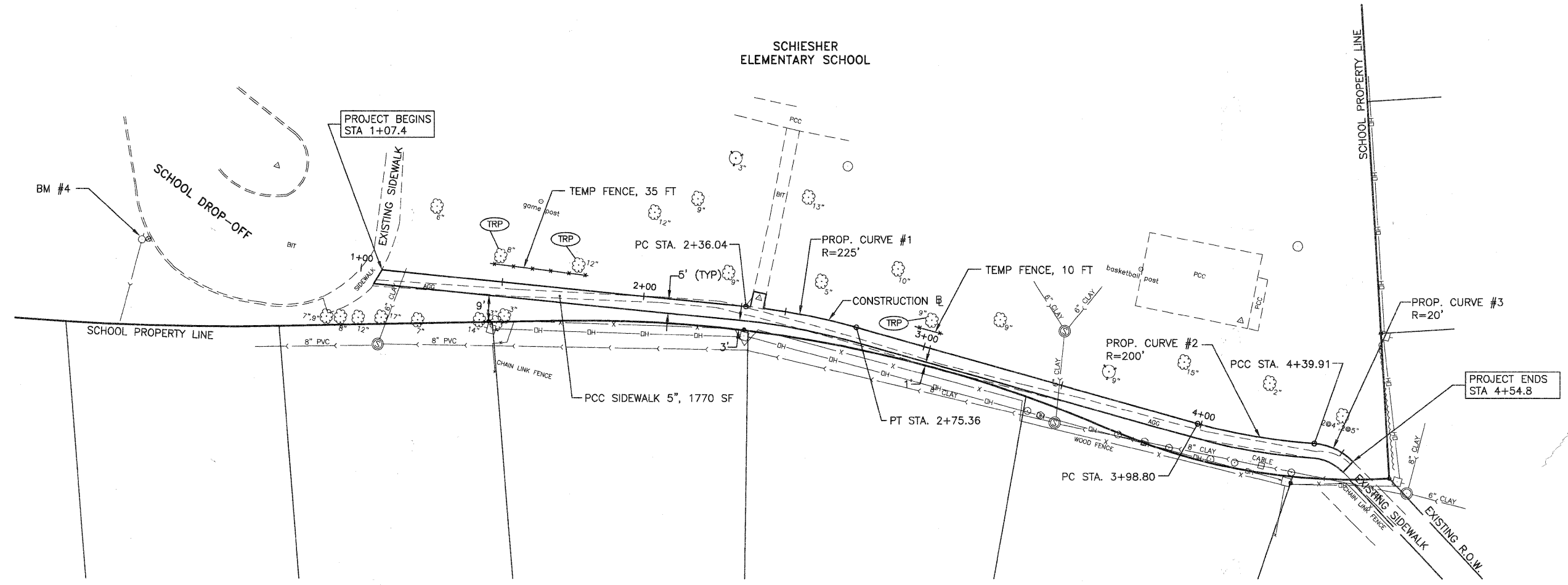


- NOTES:**
- 1) DRIVEWAY LIMITS ARE 2 FEET FROM EDGE OF SIDEWALK, UNLESS OTHERWISE NOTED.
 - 2) THE REMOVAL AND DISPOSAL OF ALL STORM SEWERS, CULVERT PIPES, HEADWALLS, RAILROAD TIES (REGARDLESS OF SIZE OR TYPE) UNDER EXISTING PAVEMENT OR IN PARKWAYS SHALL BE INCLUDED IN THE COST OF REMOVAL AND DISPOSAL OF UNSUITABLE MATERIAL PAY ITEM AND WILL NOT BE PAID FOR SEPARATELY.
 - 3) FINE GRADING OF PARKWAY TO PROVIDE POSITIVE DRAINAGE SHALL BE INCLUDED IN THE COST OF SEEDING CLASS I (SPECIAL).
 - 4) ALL EXCAVATED MATERIALS MUST BE REMOVED FROM THE JOBSITE AT THE END OF EACH WORK DAY.



LEGEND

	STRUCTURE TO BE ADJUSTED
	STRUCTURE TO BE RECONSTRUCTED
	STRUCTURE TO BE RECONSTRUCTED WITH NEW FRAME AND LID
*	DETECTABLE WARNINGS ON SIDEWALK RAMPS
	SIDEWALK REMOVAL
	TREE ROOT PRUNING
	TEMPORARY FENCE

FILE NAME =	USER NAME =	DESIGNED -- BDH	REVISED --
		DRAWN -- SMP	REVISED --
		CHECKED -- BDH	REVISED --
		DATE -- 9-29-10	REVISED --

**STATE OF ILLINOIS
DEPARTMENT OF TRANSPORTATION**

**GEOMETRIC PLAN
SCHIESHER ELEMENTARY SCHOOL**

SCALE: 1"=20'
SHEET NO. 8 OF 26 SHEETS
STA. 1+07 TO STA. 4+55

	JAMES J. BENES & ASSOCIATES, INC. 950 Warrenville Road, Suite 101, Isle, Illinois 60532 Tel. (630) 719-7570 • Fax (630) 719-7589			
	F.A.U. RTE.	SECTION	COUNTY	TOTAL SHEETS SHEET NO.
-	10-00056-00-SW	DuPAGE	26 8	
CONTRACT NO. 63537				
ILLINOIS FED. AID PROJECT				