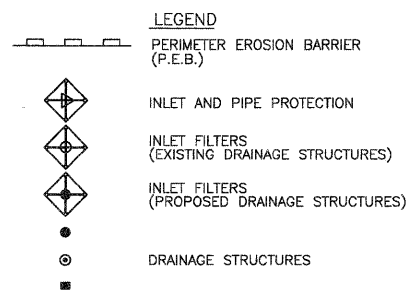
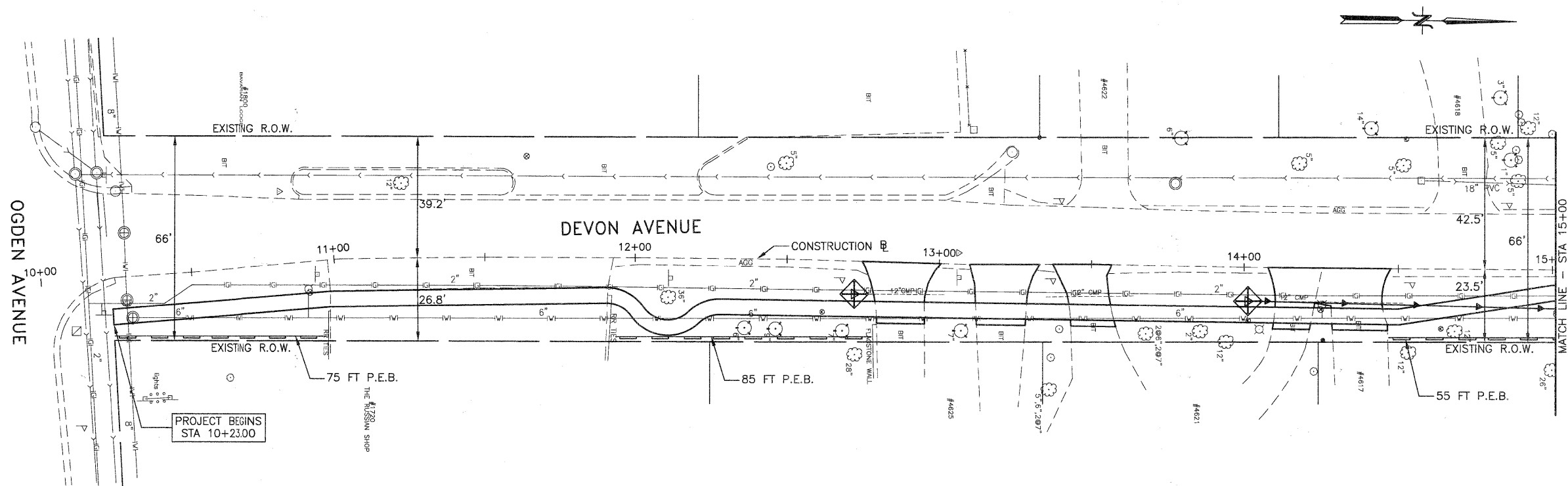


TEMPORARY EROSION CONTROL NOTES

1. SEDIMENT AND EROSION CONTROL DEVICES SHALL BE FUNCTIONAL BEFORE LAND IS OTHERWISE DISTURBED ON THE SITE.
2. THE SURFACE OF STRIPPED AREAS SHALL BE PERMANENTLY OR TEMPORARILY PROTECTED FROM SOIL EROSION WITHIN 15 DAYS AFTER FINAL GRADE IS REACHED. STRIPPED AREAS NOT AT FINAL GRADE THAT WILL REMAIN UNDISTURBED FOR MORE THAN 15 DAYS AFTER INITIAL DISTURBANCE SHALL BE PROTECTED FROM EROSION.
3. IF A STOCKPILE IS TO REMAIN IN PLACE FOR MORE THAN 3 DAYS, THEN SEDIMENT AND EROSION CONTROL DEVICES SHALL BE INSTALLED DURING CONSTRUCTION.
4. STORM SEWER INLETS SHALL BE PROTECTED WITH SEDIMENT TRAPPING OR FILTER CONTROL DEVICES DURING CONSTRUCTION.
5. THE QUANTITIES SHOWN FOR INLET & PIPE PROTECTION AND TEMPORARY DITCH CHECKS ARE SUFFICIENT FOR ONE (1) SETUP AND THREE (3) REPLACEMENTS.
6. THE CONTRACTOR SHALL MAINTAIN ALL EROSION CONTROL MEASURES IN SERVICEABLE CONDITION AT ALL TIMES. EROSION CONTROL MEASURES WILL BE INSPECTED WITHIN 24 HOURS OF ANY STORM EXCEEDING 0.5 INCHES OF PRECIPITATION.
7. ALL CONSTRUCTION ACTIVITIES SHALL BE IN ACCORDANCE WITH THE NATIONAL POLLUTANT DISCHARGE ELIMINATION SYSTEM STORM WATER PERMIT FOR THIS PROJECT.
8. TEMPORARY DITCH CHECKS SHALL BE PLACED IMMEDIATELY AFTER DITCH GRADING (OR CLEANING AND REGRADING) IS COMPLETED.
9. ALL PROPOSED OPEN LID DRAINAGE STRUCTURES SHALL HAVE INLET PROTECTION AS DIRECTED BY THE ENGINEER WITH INLET FILTERS, AND THIS WORK SHALL BE PAID FOR AT THE CONTRACT UNIT PRICE PER EACH FOR "INLET FILTERS".
10. WATER PUMPED OR OTHERWISE DISCHARGED FROM THE SITE DURING CONSTRUCTION DEWATERING SHALL BE FILTERED.
11. ANY SOIL, MUD OR DEBRIS WASHED, TRACKED, OR DEPOSITED ONTO THE STREET SHALL BE REMOVED PRIOR TO THE END OF THE WORK DAY.
12. MAINTENANCE OF TEMPORARY EROSION CONTROL SYSTEMS WILL NOT BE PAID FOR SEPARATELY, BUT INCLUDED IN THE COST OF TEMPORARY EROSION CONTROL ITEM.



JJB JAMES J. BENES & ASSOCIATES, INC.
 950 Warrenville Road, Suite 101, Lisle, Illinois 60532
 Tel. (630) 719-7570 • Fax (630) 719-7589

FILE NAME =	USER NAME =	DESIGNED - BDH	REVISED -
		DRAWN - SMP	REVISED -
PLOT SCALE =	CHECKED - BDH	REVISED -	
PLOT DATE =	DATE - 9-29-10	REVISED -	

STATE OF ILLINOIS
 DEPARTMENT OF TRANSPORTATION

STORM WATER POLLUTION PREVENTION PLAN
 DEVON AVENUE

SCALE: 1"=20' SHEET NO. 9 OF 26 SHEETS STA. 10+23 TO STA. 15+00

F.A.U. RTE.	SECTION	COUNTY	TOTAL SHEETS	SHEET NO.
-	10-00056-00-SW	DuPAGE	26	9
			CONTRACT NO. 63537	

ILLINOIS FED. AID PROJECT