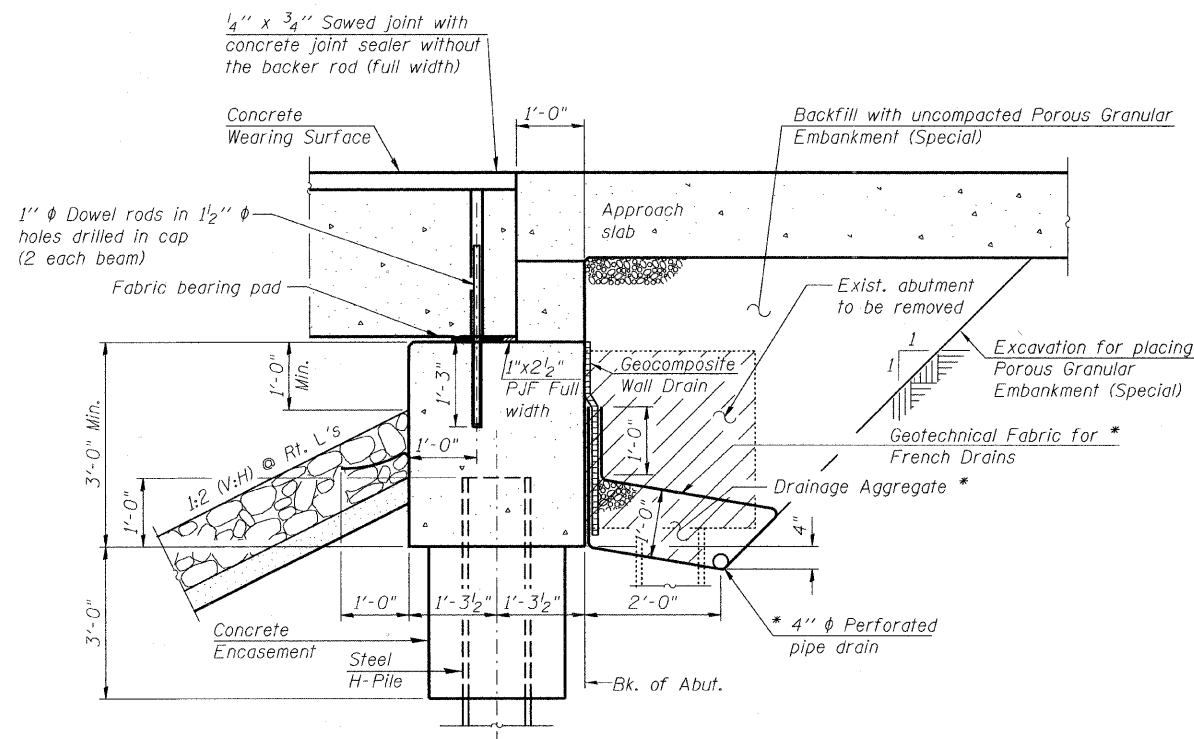


**GENERAL NOTES**

- Reinforcement bars shall conform to the requirements of ASTM A 706 Gr 60. See Special Provisions.
- Reinforcement bars designated (E) shall be epoxy coated.
- Layout of the slope protection system may be varied to suit ground conditions in the field as directed by the engineer.
- The embankment configuration shown shall be the minimum that must be placed and compacted prior to construction of the abutments.
- The Contractor shall take extreme caution during all phases of construction to prevent the deposition of any material into Rush Creek. Demolition and construction activities within the floodplain shall be limited to the grading limits shown on the grading detail.
- The contractor is advised that the existing structure contains members that are in deteriorated condition with reduced load carrying capacity. It is the contractor's responsibility to account for the condition of the existing structure when developing construction procedures for removal.
- The Contractor shall obtain a construction permit from the Illinois Department of Natural Resources (IDNR), Office of Water Resources for any temporary construction activity placed in the water except cofferdams. This shall include the placement of material for run-arounds, causeways, etc. Any permit application by the Contractor shall refer to the IDNR 3704 Floodway Construction permit number allowing permanent construction as shown in the contract plans.

**INDEX OF SHEETS**

- S-1 General Plan and Elevation
- S-2 General Notes, Bill of Materials and Index of Sheets
- S-3 Top of West Approach Slab Elevations
- S-4 Top of East Approach Slab Elevations
- S-5 Superstructure Plan and Cross Section
- S-6 Superstructure Details
- S-7 Bridge Approach Slab Details 1
- S-8 Bridge Approach Slab Details 2
- S-9 Steel Railing Details
- S-10 27"x36" PPC Deck Beam Details 1
- S-11 27"x36" PPC Deck Beam Details 2
- S-12 27"x48" PPC Deck Beam Details 1
- S-13 27"x48" PPC Deck Beam Details 2
- S-14 Abutment Details
- S-15 HP Pile Details
- S-16 Soil Borings 1
- S-17 Soil Borings 2
- S-18 Soil Borings 3



**SECTION THRU ABUTMENT**

(Horiz. dim. @ Rt. L's)

\*Included in the cost of the Pipe Underdrains for Structures.

Note:

All drainage system components shall extend to 2'-0" from the end of each wingwall except an outlet pipe shall extend until intersecting with the side slopes. The pipes shall drain into concrete headwalls. (See Article 601.05 of the Standard Specifications and Highway Standard 60110).

**TOTAL BILL OF MATERIAL**

DESCRIPTION	UNIT	ESTIMATED QUANTITY		
		SUPER	SUB	TOTAL
STONE RIPRAP, CLASS A4	SQ YD		727	727
FILTER FABRIC	SQ YD		727	727
REMOVAL OF EXISTING STRUCTURES	EACH	0.5	0.5	1
STRUCTURE EXCAVATION	CU YD		163	163
CONCRETE STRUCTURES	CU YD		61.8	61.8
CONCRETE SUPERSTRUCTURE	CU YD	127.9		127.9
BRIDGE DECK GROOVING	SQ YD	491		491
CONCRETE ENCASEMENT	CU YD		7.7	7.7
PROTECTIVE COAT	SQ YD	576		576
PRECAST PRESTRESSED CONCRETE DECK BEAMS (27" DEPTH)	SQ FT	2,434		2,434
REINFORCEMENT BARS, EPOXY COATED	POUND	37,400	5,360	42,760
FURNISHING STEEL PILES HP 12X53	FOOT		1,080	1,080
DRIVING PILES	FOOT		1,080	1,080
TEST PILE STEEL HP 12X53	EACH		2	2
NAME PLATES	EACH	1		1
GEOCOMPOSITE WALL DRAIN	SQ YD		43	43
* POROUS GRANULAR EMBANKMENT, SPECIAL	CU YD		62	62
* CONCRETE WEARING SURFACE, 5"	SQ YD	273		273
* STEEL RAILING (SPECIAL)	FOOT	160		160
* PIPE UNDERDRAINS FOR STRUCTURES 4"	FOOT		154	154

\* Indicates Special Provision

N:\PROJECTS\3381\02\Design\Structural\CAD\3381\_02\_02 General Notes.dgn

FILE NAME = 3381\_02\_02 General Notes.dgn



USER NAME = espina	DESIGNED - AMK	REVISED -
	CHECKED - BWS	REVISED -
PLOT SCALE =	DRAWN - RD	REVISED -
PLOT DATE = 2/11/2011	CHECKED - BWS	REVISED -

**MCHENRY COUNTY DIVISION OF TRANSPORTATION**

**GENERAL NOTES, BILL OF MATERIAL AND INDEX OF SHEETS**  
**STRUCTURE NO. 056-3180**  
 SHEET NO. S-2 OF S-18 SHEETS

F.A. RTE.	SECTION	COUNTY	TOTAL SHEETS	SHEET NO.
	07-00340-00-BR	MCHENRY	46	19
			CONTRACT NO. 63552	
ILLINOIS FED. AID PROJECT				