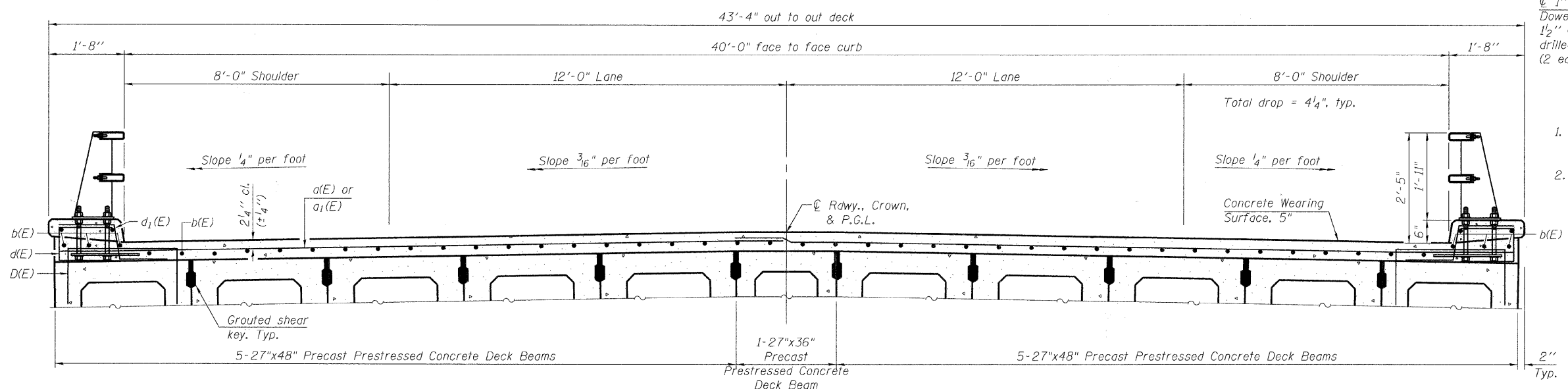
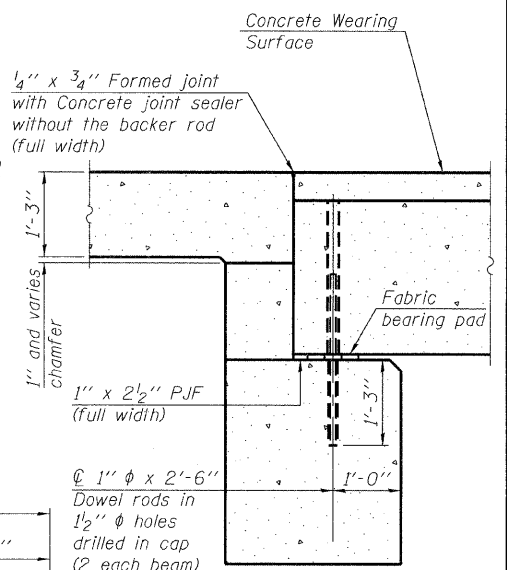


PLAN



CROSS SECTION
(Looking East)

- Notes:
1. See sheet S-6 of S-18 for Superstructure Details and Bill of Material.
 2. Bars indicated thus 20 x 2-#4 etc. indicates 20 lines of bars with 2 lengths per line.
 3. For location of railing posts and anchor bolts see elevation on sheet S-9.



SECTION A-A

- Notes:
1. All concrete wearing surfaces shall be placed prior to casting a backwall and/or approach slab.
 2. See sheet S-13 for fabric bearing pad details.

MINIMUM BAR LAP
#4 bar = 2'-7"

m:\proj\3381\3381.dgn\Structure\3381.dgn\05 Superstructure Plan and Cross Section.dgn

FILE NAME = 3381.02 05 Superstructure Plan and Cross Section.dgn



USER NAME = espina	DESIGNED - AMK	REVISED -
PLOT SCALE =	CHECKED - BWS	REVISED -
PLOT DATE = 2/4/2011	DRAWN - RD	REVISED -
	CHECKED - BWS	REVISED -

MCHENRY COUNTY DIVISION OF TRANSPORTATION

SUPERSTRUCTURE PLAN AND CROSS SECTION
STRUCTURE NO. 056-3180
SHEET NO. S-5 OF S-18 SHEETS

F.A. RTE.	SECTION	COUNTY	TOTAL SHEETS	SHEET NO.
	07-00340-00-BR	MCHENRY	46	22
			CONTRACT NO. 63552	
ILLINOIS FED. AID PROJECT				