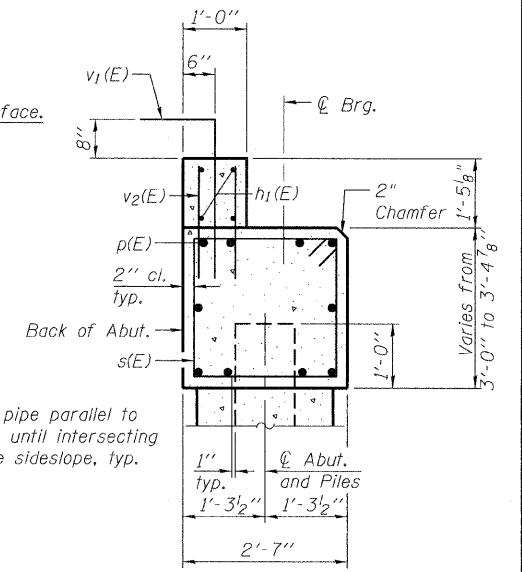
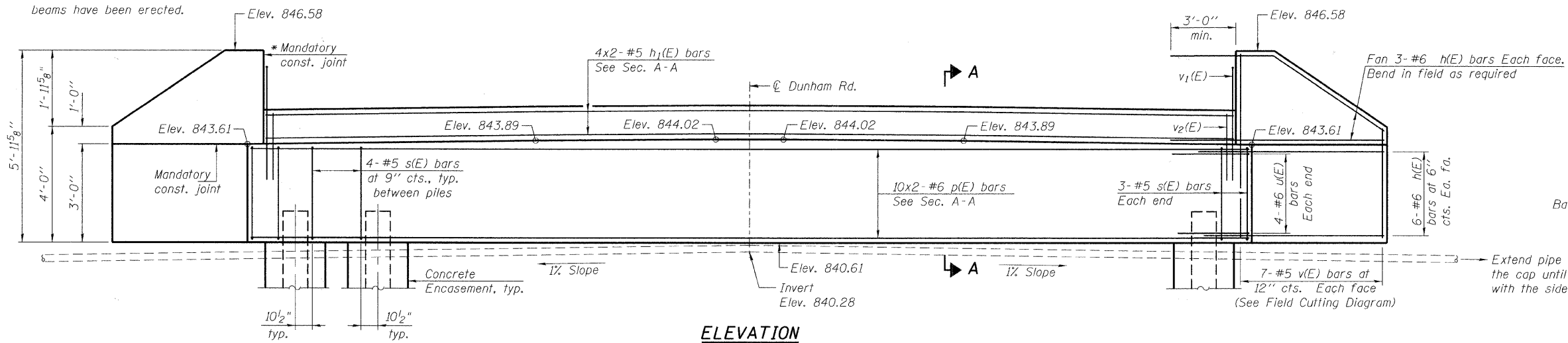


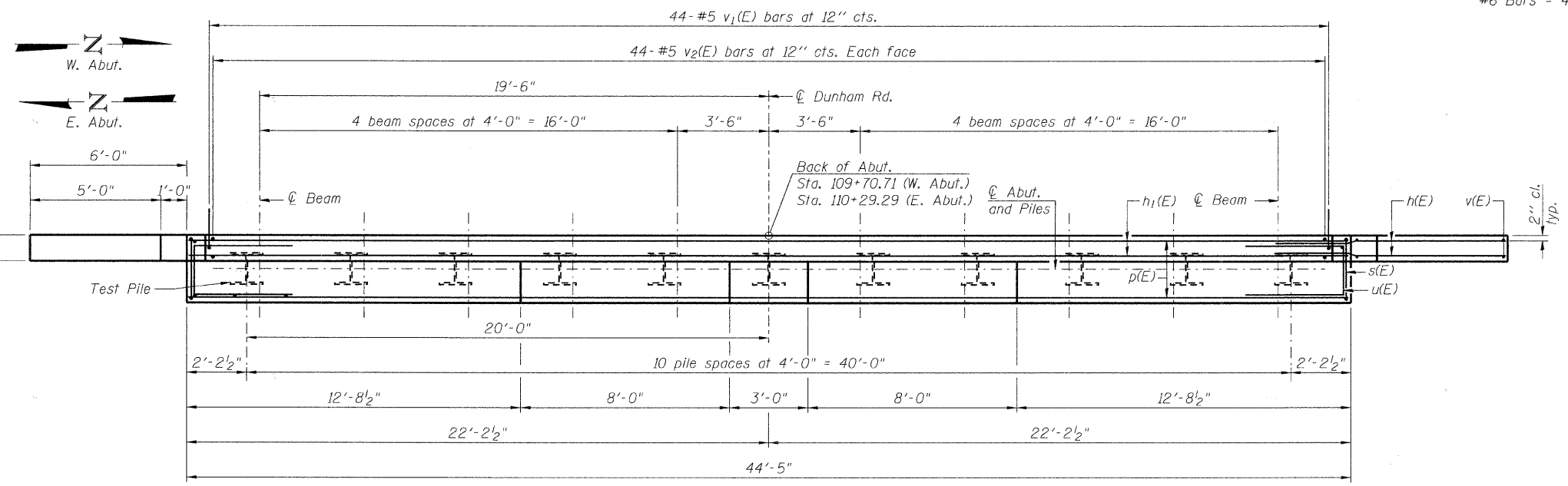
* Cast top portion of wingwall flush with exterior beam face after beams have been erected.



ELEVATION

SECTION A-A

MIN. LAP
 #5 Bars = 3'-8"
 #6 Bars = 4'-5"



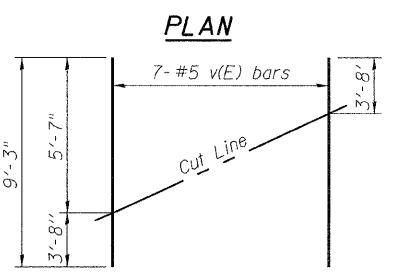
PLAN

WEST ABUTMENT PILE DATA

Type: Steel - HP 12x53
 Nominal Required Bearing: 140k
 Factored Resistance Available: 280k
 Est. Length: 60'
 No. Production Piles: 10
 No. Test Piles: 1

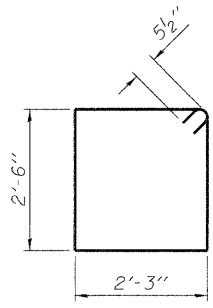
EAST ABUTMENT PILE DATA

Type: Steel - HP 12x53
 Nominal Required Bearing: 140k
 Factored Resistance Available: 280k
 Est. Length: 48'
 No. Production Piles: 10
 No. Test Piles: 1

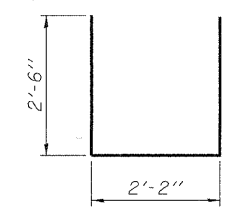


FIELD CUTTING DIAGRAM

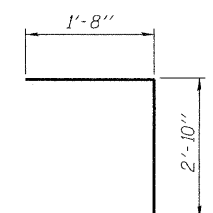
Order v(E) bars full length. Cut as shown and use remainder of bars in opposite face.



BAR s(E)



BAR u(E)



BAR v1(E)

BILL OF MATERIAL FOR EAST AND WEST ABUTMENTS

Bar	No.	Size	Length	Shape
h(E)	72	#6	9'-8"	—
h1(E)	16	#5	23'-5"	—
p(E)	40	#6	24'-3"	—
s(E)	92	#5	10'-5"	□
u(E)	16	#6	7'-2"	—
v(E)	28	#5	9'-3"	—
v1(E)	88	#5	4'-6"	└
v2(E)	176	#5	3'-4"	—
Structure Excavation			Cu. Yd.	163
Concrete Structures			Cu. Yd.	36.4
Reinforcement Bars, Epoxy Coated			Pound	5,360
Furnishing Steel Piles, HP12x53			Foot	1,080
Driving Piles			Foot	1,080
Test Pile, Steel HP12x53			Each	2
Concrete Encasement			Cu. Yd.	7.7

Notes:
 1. For details of piles and Concrete Encasement, see sheet S-15 of S-18.
 2. Cast backwall after beams and concrete wearing surface, if applicable, have been erected.

FILE NAME = 3381.02 14 Abutments.dgn



USER NAME = espina	DESIGNED - AMK	REVISD -
PLOT SCALE =	CHECKED - BWS	REVISD -
PLOT DATE = 2/4/2011	DRAWN - RD	REVISD -
	CHECKED - BWS	REVISD -

MCHENRY COUNTY DIVISION OF TRANSPORTATION

ABUTMENT DETAILS
STRUCTURE NO. 056-3180
 SHEET NO. S-14 OF S-18 SHEETS

F.A. RTE.	SECTION	COUNTY	TOTAL SHEETS	SHEET NO.
	07-00340-00-BR	MCHENRY	46	31
			CONTRACT NO. 63552	
ILLINOIS FED. AID PROJECT				