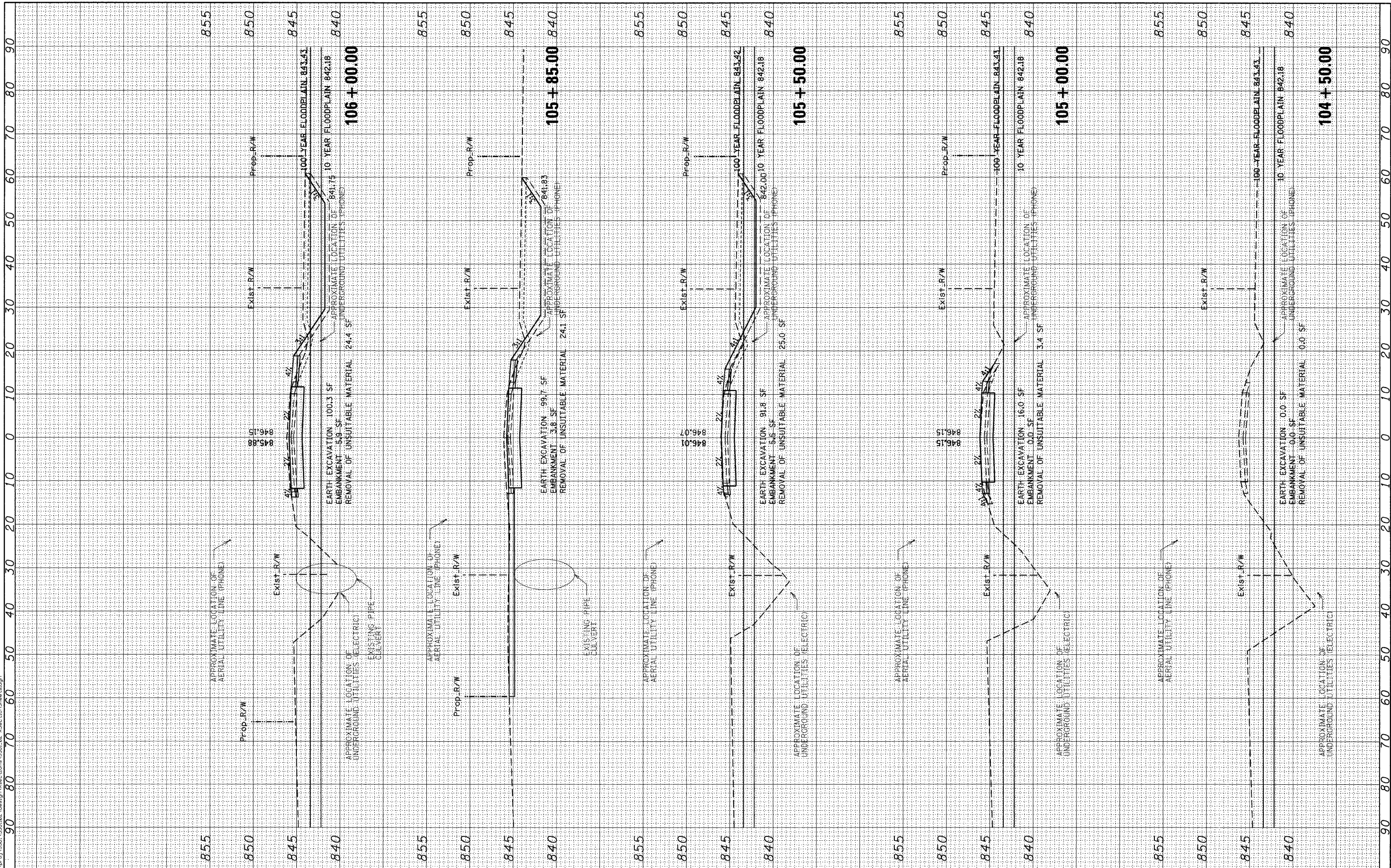


FILE NAME: I:\Projects\3281\02\Drawings\Sections\3281_02_SectionSheet.dgn



Ciorba Group, Inc.
 CONSULTING ENGINEERS
 5507 North Cumberland Avenue, Suite 402
 Chicago, Illinois 60656
 Tel. 773.775.4009 Fax 773.775.4014

USER NAME = espina	DESIGNED - WBL	REVISED -
PLOT SCALE = 1/2"=10' / IN.	DRAWN - WBL	REVISED -
PLOT DATE = 2/4/2011	CHECKED - MJL	REVISED -
	DATE - 02/07/2011	REVISED -

McHENRY COUNTY DIVISION OF TRANSPORTATION

DUNHAM ROAD CROSS SECTIONS
 SCALE: 1"=5' (V) 1"=10' (H)
 STA. 104+50.00 TO STA. 106+00.00

F.A. RTE.	SECTION	COUNTY	TOTAL SHEETS	SHEET NO.
	07-00340-00-BR	MCHEMRY	46	42
CONTRACT NO. 63552				
FED. ROAD DIST. NO.	ILLINOIS FED. AID PROJ. ECT			