

**STANDARD BAR SPLICER ASSEMBLY**

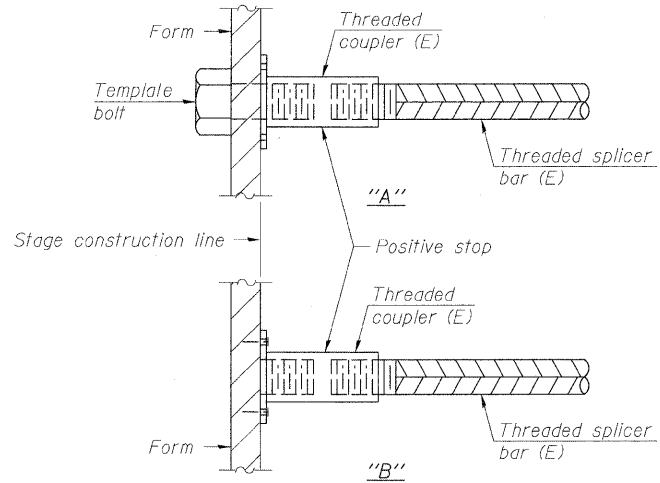
Minimum Lap Lengths					
Bar size to be spliced	Table 1	Table 2	Table 3	Table 4	Table 5
3, 4	1'-5"	1'-11"	2'-1"	2'-4"	2'-3"
5	1'-9"	2'-5"	2'-7"	2'-11"	2'-10"
6	2'-1"	2'-11"	3'-1"	3'-6"	3'-4"
7	2'-9"	3'-10"	4'-2"	4'-8"	4'-6"
8	3'-8"	5'-1"	5'-5"	6'-2"	5'-10"
9	4'-7"	6'-5"	6'-10"	7'-9"	7'-5"

- Table 1: Black bar, 0.8 Class C
- Table 2: Black bar, Top bar lap, 0.8 Class C
- Table 3: Epoxy bar, 0.8 Class C
- Table 4: Epoxy bar, Top bar lap, 0.8 Class C
- Table 5: Epoxy bar, Top bar lap, Class B

Threaded splicer bar length = min. lap length + 1/2" + thread length

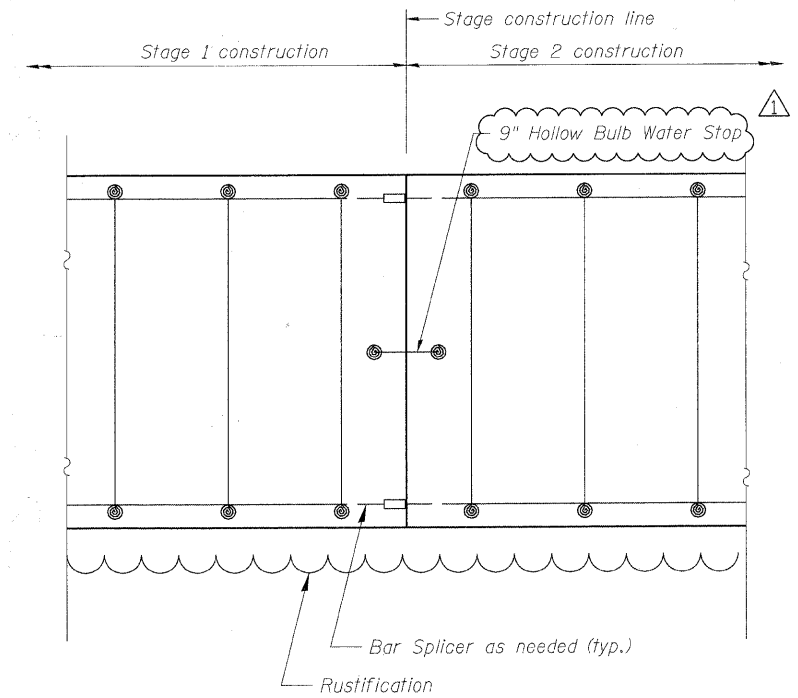
\* Epoxy not required on Bar Splicer Assembly components used in conjunction with black bars.

Location	Bar size	No. assemblies required	Table for minimum lap length
S. Abut. Shear Key	#5	6	2'-7"
S. Abut. Stem	#6	36	3'-1"
S. Abut. Footing	#7	48	4'-2"
N. Abut. Shear Key	#5	6	2'-7"
N. Abut. Stem	#6	36	3'-1"
N. Abut. Footing	#7	56	4'-2"



**INSTALLATION AND SETTING METHODS**

"A" : Set bar splicer assembly by means of a template bolt.  
 "B" : Set bar splicer assembly by nailing to wood forms or cementing to steel forms.  
 (E) : Indicates epoxy coating.



**CONSTRUCTION JOINT DETAILS  
 ABUTMENT STEM**

**NOTES**

Splicer bars shall be deformed with threaded ends and have a minimum 60 ksi yield strength.  
 All reinforcement shall be lapped and tied to the splicer bars.  
 Bar splicer assemblies shall be epoxy coated according to the requirements for reinforcement bars. See Section 508 of the Standard Specifications.  
 See approved list of bar splicer assemblies.

FILE NAME = P:\A60156977\0202\_CAD\021\_Drawing\Sheets\Structural\016-7721\_1001\_sht09\_Bar\_Splicer\_Assembly\_Detail.dgn



USER NAME = f10-resg	DESIGNED - BMR	REVISED - 4/14/11 ADDENDUM $\Delta$
PLOT SCALE = 0:1 1/4" = 1"	DRAWN - COM	REVISED -
PLOT DATE = 4/12/2011	CHECKED - DD	REVISED -
	DATE - 11/23/2010	REVISED -

**STATE OF ILLINOIS  
 DEPARTMENT OF TRANSPORTATION**

**BAR SPLICER ASSEMBLY DETAIL  
 STRUCTURE NO. 016-7721**

SCALE: NONE SHEET NO. 9 OF 65 SHEETS STA. TO STA.

F.A.U. RTE.	SECTION	COUNTY	TOTAL SHEETS	SHEET NO.
1537	06-00050-00-GS	COOK	209	103
FED. ROAD DIST. NO. 1 ILLINOIS			CONTRACT NO. 63556	
FED. AID PROJECT CRE-900317091				