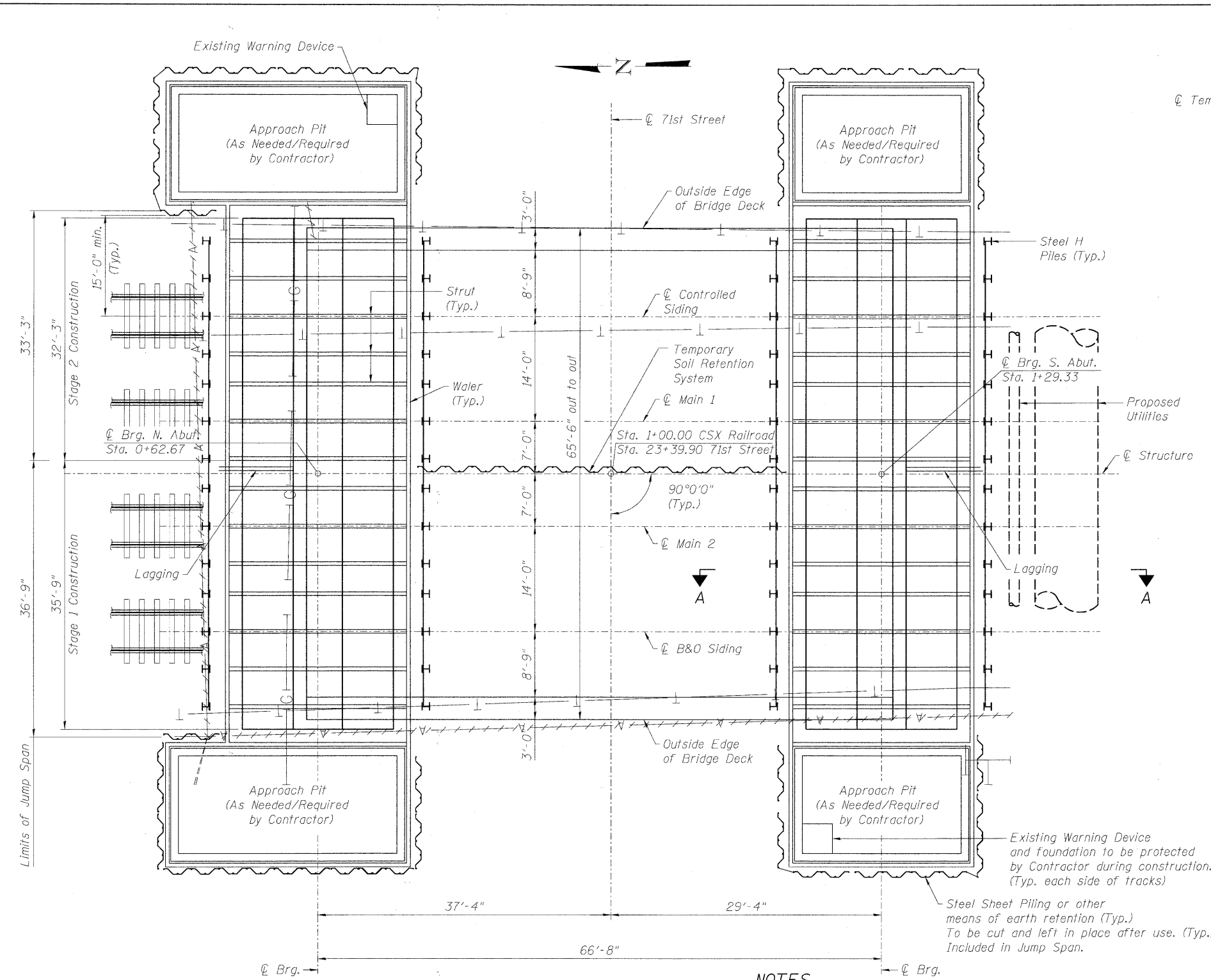


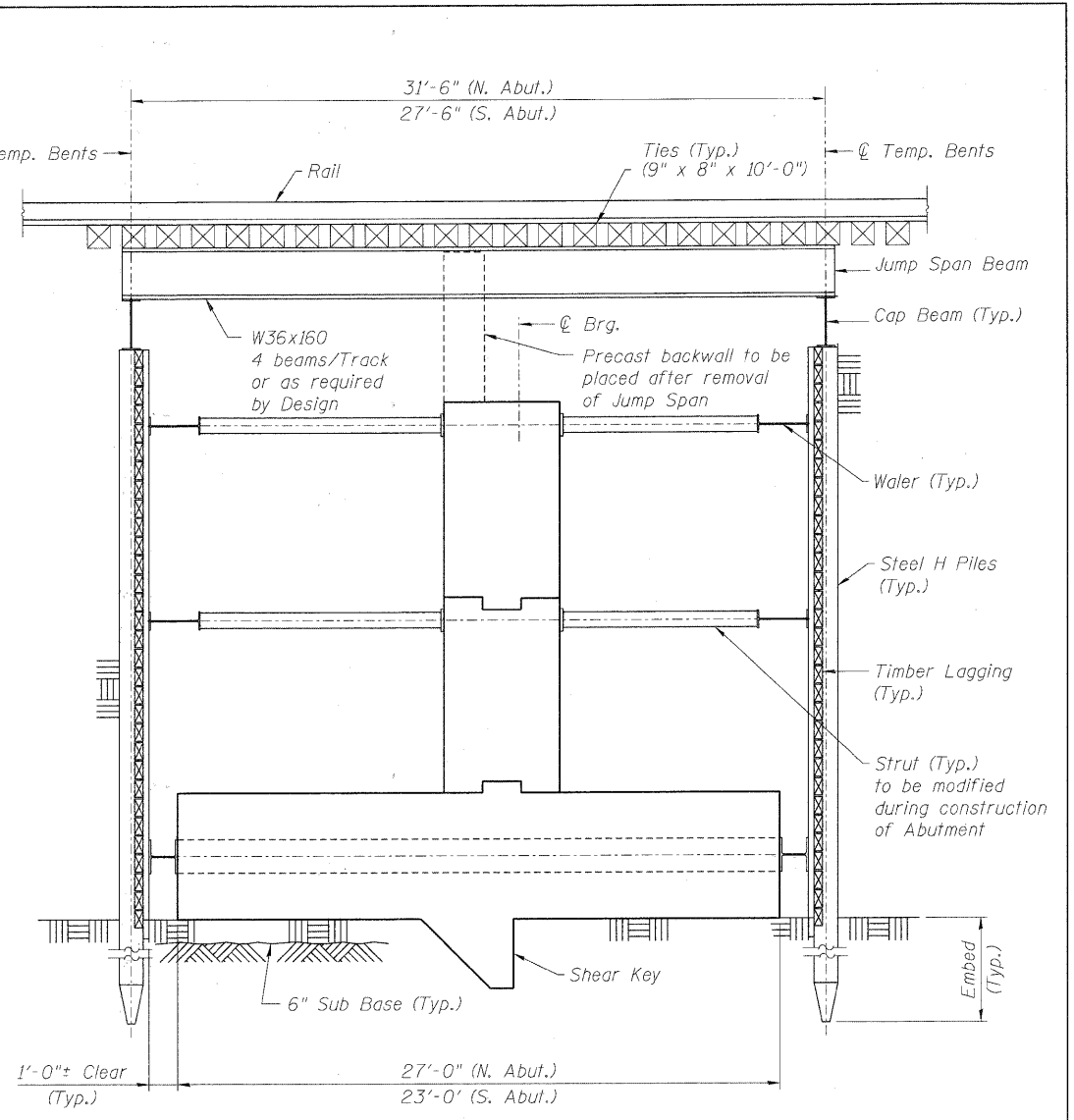
FILE NAME: P:\150156077\000-CAD-001-Drawings\Sheet\Structure\016-7721-1.DOT-ahv17-5.dwg



PLAN
(Jump span and cap beam not shown for clarity)
N.T.S.

NOTES

1. The Contractor must coordinate with the CSXT Representative to work around the train schedule to minimize the impact on train operations.
2. The Contractor may install the steel H Piles and earth retention system between normal train operations. The Contractor must stop work and clear the active tracks by at least 10 feet from center line of tracks for passing trains.
3. The Contractor will be given 2 windows (2 tracks each window) of 24 hrs. each maximum for the interruption of train operations in each phase of construction for the bridge for removing tracks, installing bridge and restoring train operation. The Contractor shall preassemble the superstructure near the bridge site and install the superstructure to its final position to expedite construction.



SECTION A-A
N.T.S.

4. Only Conceptual Layout and Details are shown for the Jump span. The final design and details for the jump spans, sheet piling, and all temporary/permanent earth retention system to be performed by the Contractor. Submit the final design and details to the Engineer for review and approval.
5. Find Construction Sequence, Design (including calculations and sealed Plans) and Details shall be submitted to CSXT for Approval prior to fabrication or erection of Temporary Structures.
6. For Suggested Construction Sequence, see next sheet.
7. Cost of approach pit or other access structures are included in "Construction of Jump Spans".
8. Ties to include Outrigger or Joist Ties for Walkways on each side of Track.
9. Install and maintain steel welded grating for walkways on each side of track and between rails.
10. Mats or other means of Protection must be Provided to Protect Rails and Ballast from Damage due to Equipment or Construction Operations. Cost included in "Construction of Jump Spans".
11. Rail surcharge loading for jump span design shall be according to CSXT Construction Submission Criteria Section IV.

Suggested Details Only.
Final Design and Details
by the Contractor.

AECOM	USER NAME = floresg	DESIGNED = BMR	REVISED = 4/14/11 ADDENDUM	STATE OF ILLINOIS DEPARTMENT OF TRANSPORTATION	SUGGESTED STAGING CONCEPT STRUCTURE NO. 016-7721	F.A.U. RTE. = 1537	SECTION = 06-00050-00-GS	COUNTY = COOK	TOTAL SHEETS = 209	SHEET NO. = 110	
	PLOT SCALE = 01:2000 '1" = 20'	DRAWN = JH	REVISOR =			SHEET NO. = 110					
	PLOT DATE = 4/12/2011	CHECKED = DD	REVISOR =			CONTRACT NO. = 63556		FED. ROAD DIST. NO. 1 ILLINOIS FED. AID PROJECT CRE-900317091			
	DATE = 11/23/2010	REVISOR =	REVISOR =	SCALE:	SHEET NO. 17 OF 65 SHEETS	STA.	TO STA.				