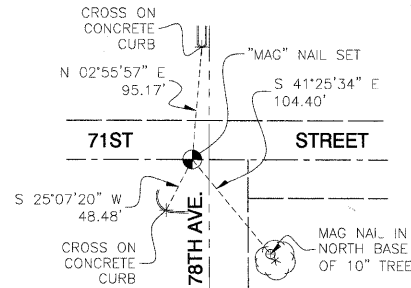


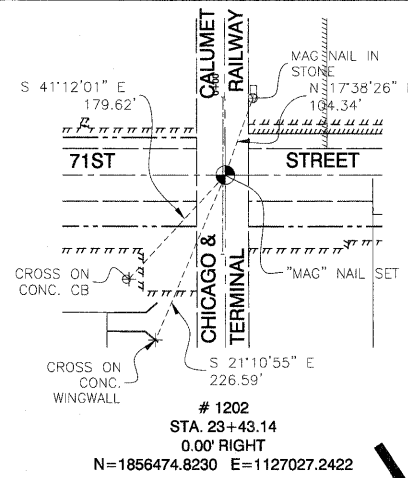
SECTION 24, TOWNSHIP 38 N, RANGE 12 E
SECTION 25, TOWNSHIP 38 N, RANGE 12 E
3rd PRINCIPAL MERIDIAN

NOTES:

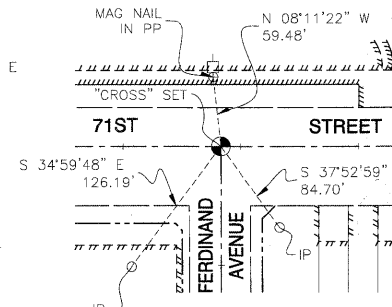
- SEE RIGHT OF WAY PLANS / PLAT OF HIGHWAYS FOR FURTHER INFORMATION.



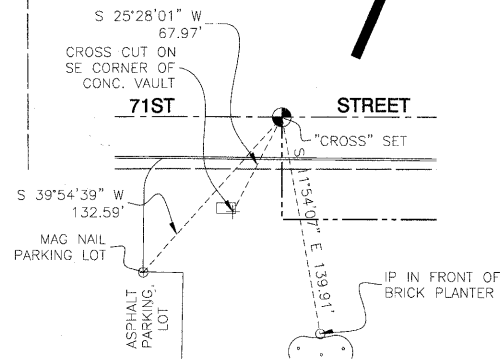
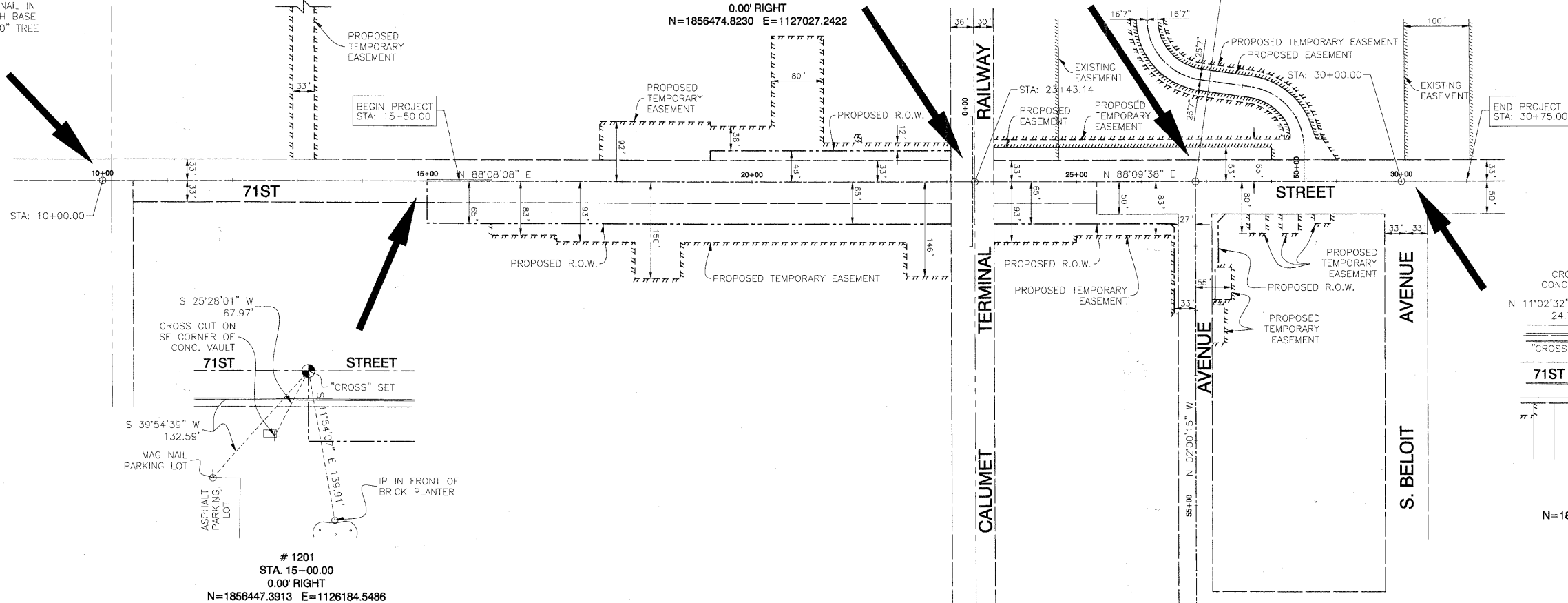
1205
STA. 10+00.00
0.00' RIGHT
N=1856431.1238 E=1125684.8133



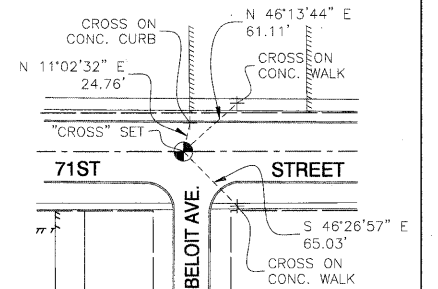
1202
STA. 23+43.14
0.00' RIGHT
N=1856474.8230 E=1127027.2422



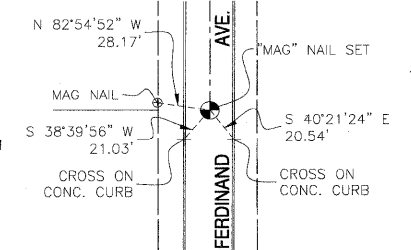
1206
STA. 26+83.06 (71ST ST)
STA. 60+00.00 (FERDINAND AVE)
0.00' RIGHT
N=1856485.7335 E=1127366.9829



1201
STA. 15+00.00
0.00' RIGHT
N=1856447.3913 E=1126184.5486



1203
STA. 30+00.00
0.00' RIGHT
N=1856495.9067 E=1127683.7638



1204
STA. 50+00.00 (FERDINAND AVE)
0.00' RIGHT
N=1855486.3453 E=1127401.9575

COORDINATE SYSTEM DEFINITION:
North American Datum Of 1983 adjustment of 2007 (N.A.D. '83 (2007)) Illinois State Plane Eastern Zone estimated GROUND coordinates based upon an average location for the length of the project having the following parameters:

WCS '84 North Latitude 41 degrees 46 minutes 8.73097 seconds
WCS '84 West Longitude 87 degrees 48 minutes 28.00543 seconds
WCS '84 Height 507.32313 feet
Orthometric Height 616.77 feet (estimated utilizing Geoid '03)

Utilization of these parameters should yield a ground scale factor of 1.0000257189

BEARING REFERENCE DEFINITION:
North American Datum Of 1983 adjustment of 2007 (N.A.D. '83 (2007)) Illinois State Plane Eastern Zone

BENCH MARK: BVW249

SQUARE CUT ON N CONC BASE OF RR SIGNAL
MAST ARM BASE ON S ROW OF 71ST STREET
1/2 MILE WEST OF HARLEM AVENUE
ELEVATION=620.57



| | | |
|-----------------------------|----------------|-----------|
| USER NAME = manny | DESIGNED - NJH | REVISED - |
| PLOT SCALE = 1,000' / 1\"/> | | |

STATE OF ILLINOIS
DEPARTMENT OF TRANSPORTATION

ALIGNMENT, TIES AND BENCHMARKS

SCALE: NONE SHEET NO. 1 OF 1 SHEETS STA. TO STA.

| F.A.U. RTE. | SECTION | COUNTY | TOTAL SHEETS | SHEET NO. |
|---|----------------|--------|--------------|-----------|
| 1537 | 06-00050-00-GS | COOK | 209 | 17 |
| CONTRACT NO. | | | | 63556 |
| FED. ROAD DIST. NO. 1 ILLINOIS FED. AID PROJECT CRE-9003(709) | | | | |