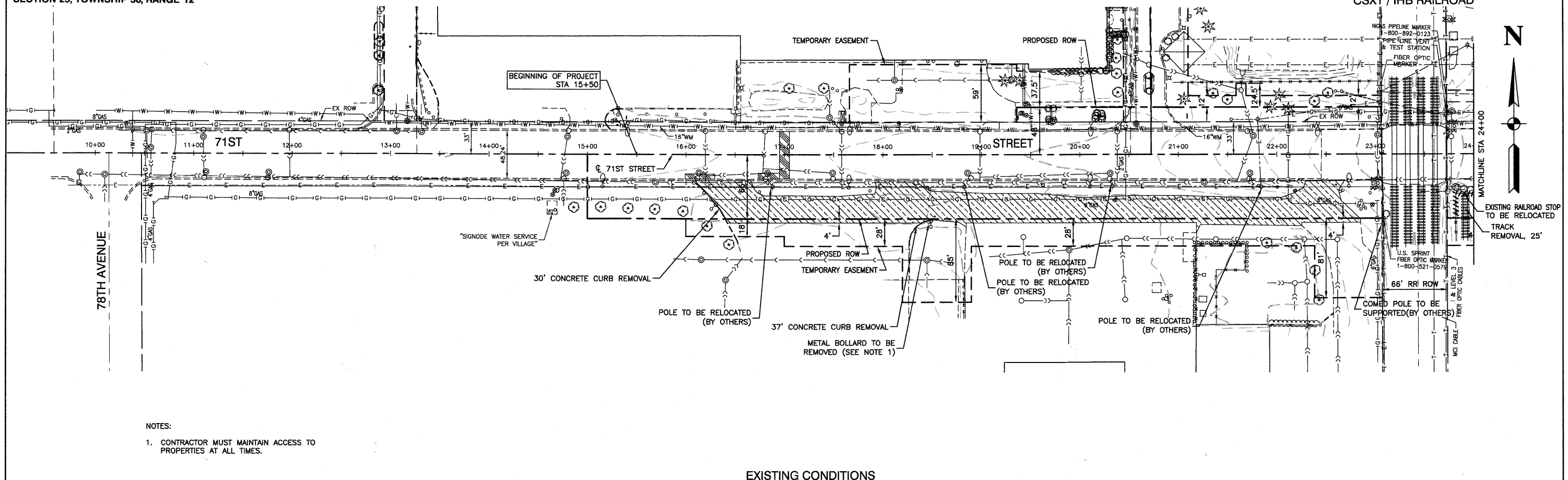
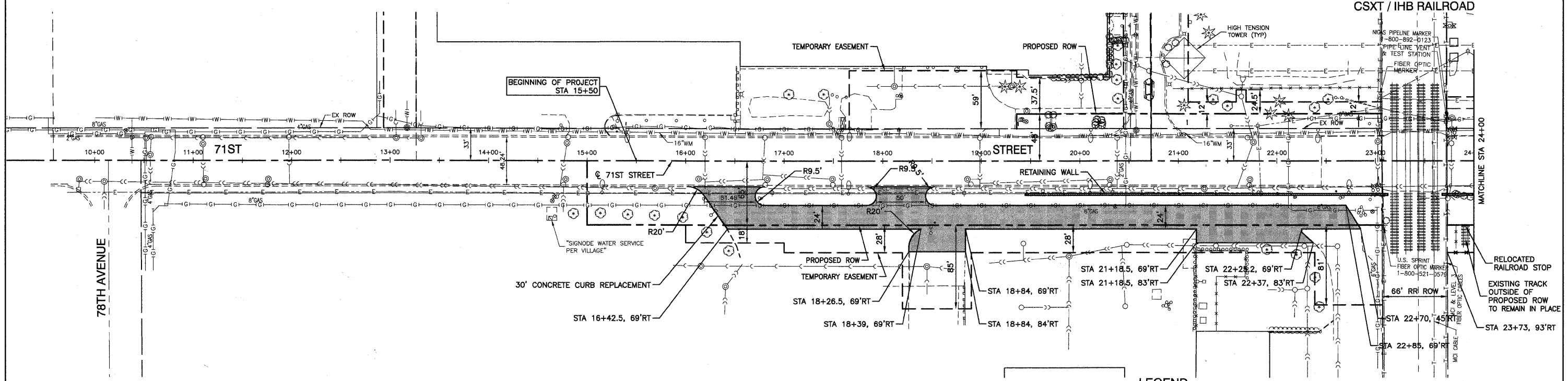


SECTION 24, TOWNSHIP 38, RANGE 12
SECTION 25, TOWNSHIP 38, RANGE 12



NOTES:
1. CONTRACTOR MUST MAINTAIN ACCESS TO PROPERTIES AT ALL TIMES.

EXISTING CONDITIONS



LEGEND

- DRIVEWAY PAVEMENT REMOVAL
- PAVEMENT REMOVAL
- PAVEMENT PATCHING
- TREE REMOVAL
- SUB-BASE GRANULAR MATERIAL TYPE B, 4" AND HOT-MIX ASPHALT PAVEMENT (FULL DEPTH), 12"
- HOT-MIX ASPHALT DRIVEWAY PAVEMENT; 6"
- HOT-MIX ASPHALT SURFACE COURSE, MIX "C", N50(L-9.5mm); 2"
- HOT-MIX ASPHALT BINDER COURSE, IL-19.0, N50; 4"

BENCH MARK: BW249
SQUARE CUT ON N CONC BASE OF RR SIGNAL
MAST ARM BASE ON S ROW OF 71ST STREET
1/4 MILE WEST OF HARLEM AVENUE
ELEVATION=620.57

FILE NAME = 0603-PLPR-01 - EX01	USER NAME =	DESIGNED -- PKB	REVISED -- REL - 01-14-11	STATE OF ILLINOIS DEPARTMENT OF TRANSPORTATION	71ST STREET		F.A.U. R.T.E. 1537	SECTION 06-00060-00-GS	COUNTY COOK	TOTAL SHEETS 209	SHEET NO. 19	
	PLOT SCALE =	CHECKED -- PKB	REVISED --		UTILITY RELOCATION INTERIM ROADWAY PLAN		SCALE: 1"=50'		SHEET NO. 19 OF 209 SHEETS		STA. 15+50 TO STA. 24+00	
	PLOT DATE = 12/23/10	CHECKED -- AG	REVISED --		CONTRACT NO. 63556		FED. ROAD DIST. NO. 1		ILLINOIS		FED. AID PROJECT CRE-9003(709)	

BY	DATE	SURVEYED	DRAWN	CHECKED	RT. OF WAY CHECKED	NO.	NO.

BY	DATE	PROFILE SURVEYED	PLOTTED	CHECKED	B.M. NOTED

ST. DRAWN BY: RICHARD GONZALEZ ON 11/14/11
CHECKED BY: RICHARD GONZALEZ ON 2/26/12