

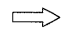
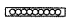



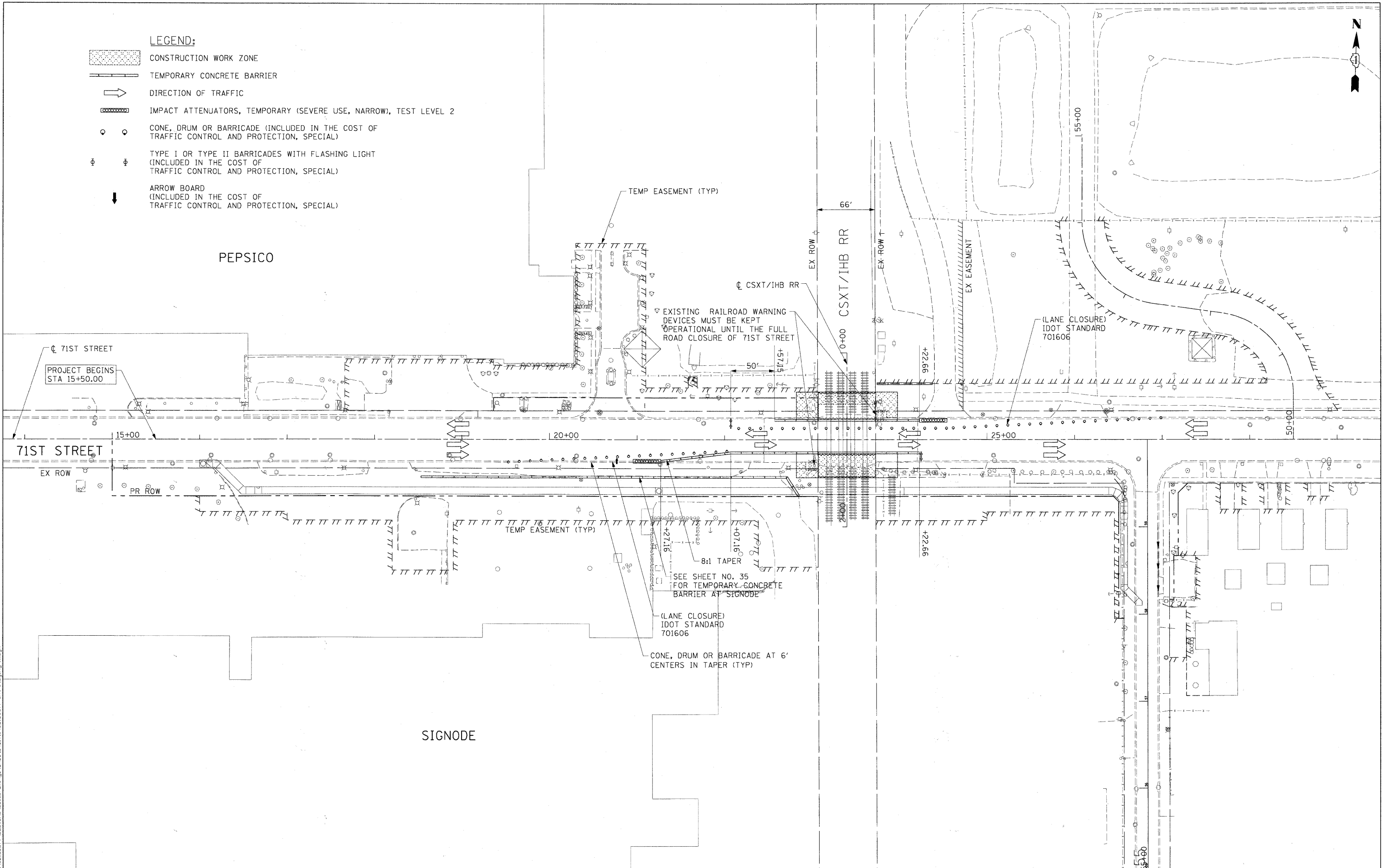
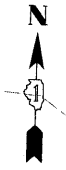


**LEGEND:**

-  CONSTRUCTION WORK ZONE
-  TEMPORARY CONCRETE BARRIER
-  DIRECTION OF TRAFFIC
-  IMPACT ATTENUATORS, TEMPORARY (SEVERE USE, NARROW), TEST LEVEL 2
-  CONE, DRUM OR BARRICADE (INCLUDED IN THE COST OF TRAFFIC CONTROL AND PROTECTION, SPECIAL)
-  TYPE I OR TYPE II BARRICADES WITH FLASHING LIGHT (INCLUDED IN THE COST OF TRAFFIC CONTROL AND PROTECTION, SPECIAL)
-  ARROW BOARD (INCLUDED IN THE COST OF TRAFFIC CONTROL AND PROTECTION, SPECIAL)



FILE NAME = P:\A\9056977\0000\_CAD\A\001\_Drawing\Signode\Sheet\Civil\06165877.sht-asagimg-1.dgn



USER NAME = manuj	DESIGNED - TJW	REVISED -
PLOT SCALE = 50.000' / 1"	DRAWN - JWM	REVISED -
PLOT DATE = 2/17/2011	CHECKED - TJW	REVISED -
DATE - FEBRUARY 17, 2011	REVISED -	

**STATE OF ILLINOIS  
DEPARTMENT OF TRANSPORTATION**

**TRAFFIC CONTROL PLAN - 71ST ST - STAGE 3**

SCALE: 1"=50'      SHEET NO. 1 OF 10 SHEETS      STA 15+50.00 TO STA 25+00.00

F.A.U. RTE.	SECTION	COUNTY	TOTAL SHEETS	SHEET NO.
1537	06-00050-00-GS	COOK	209	31
FED. ROAD DIST. NO. 1 ILLINOIS FED. AID PROJECT CRE-90031709			CONTRACT NO. 63556	