

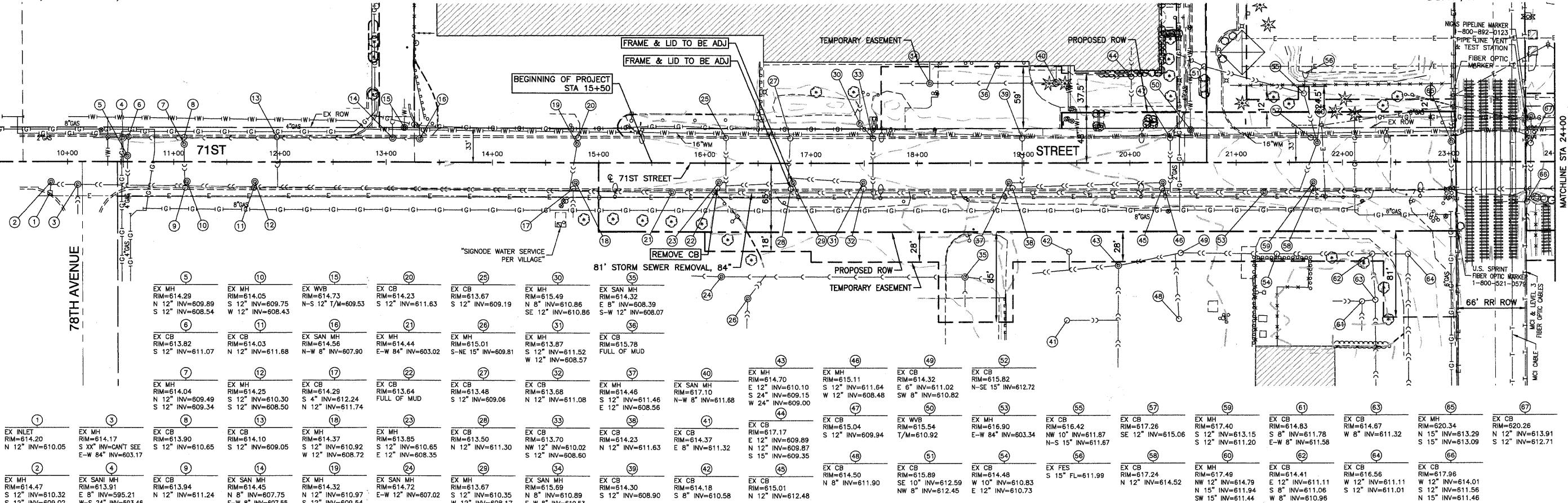
SECTION 24, TOWNSHIP 38, RANGE 12
SECTION 25, TOWNSHIP 38, RANGE 12

CSXT / IHB RAILROAD



| | |
|------|--|
| DATE | |
| BY | |
| DATE | |
| BY | |
| DATE | |
| BY | |

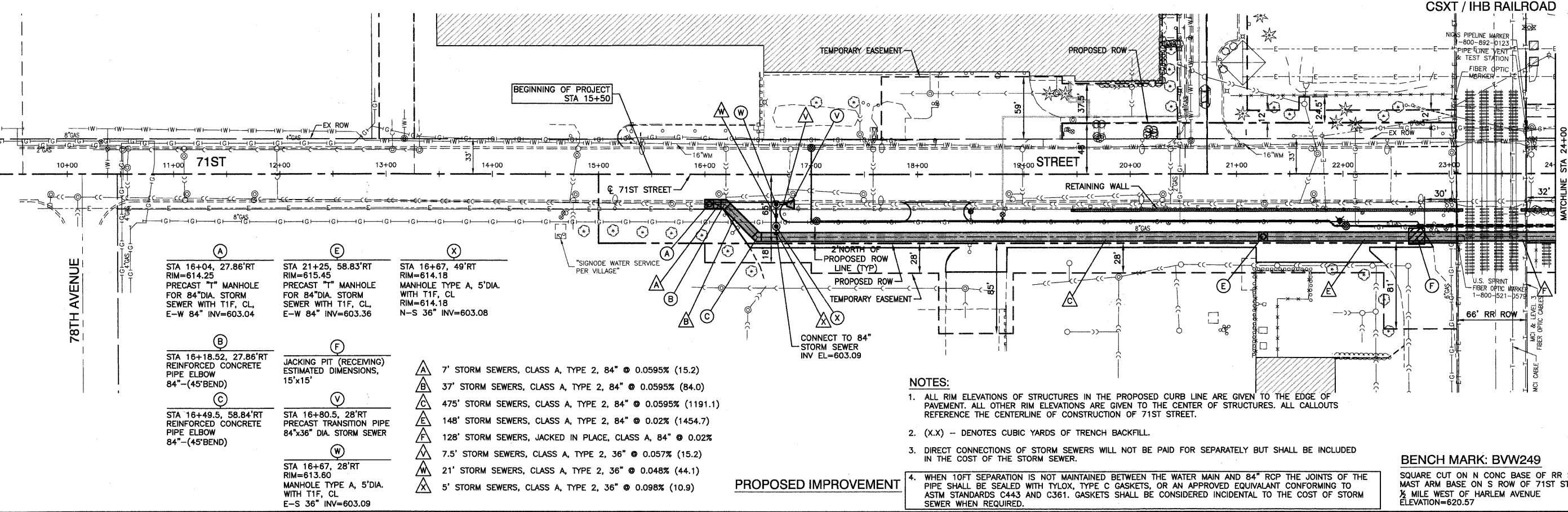
PLAN SURVEYED, PLOTTED, CHECKED, REVISIONS, NOTE BOOK, NO. OF SHEETS, CADD FILE NAME



| EXISTING CONDITIONS | |
|---------------------|---|
| ① | EX MH RIM=614.20 N 12" INV=610.05 E-W 84" INV=603.17 |
| ② | EX MH RIM=614.47 S 12" INV=609.02 |
| ③ | EX MH RIM=614.17 S XX" INV=CANT SEE E-W 84" INV=603.17 |
| ④ | EX SANI MH RIM=613.91 E 8" INV=595.21 W-S 24" INV=593.46 |
| ⑤ | EX MH RIM=614.29 N 12" INV=609.89 S 12" INV=608.54 |
| ⑥ | EX CB RIM=613.82 S 12" INV=611.07 |
| ⑦ | EX MH RIM=614.04 N 12" INV=609.49 S 12" INV=609.34 |
| ⑧ | EX CB RIM=613.90 S 12" INV=610.65 |
| ⑨ | EX CB RIM=613.94 N 12" INV=611.24 |
| ⑩ | EX MH RIM=614.05 S 12" INV=609.75 W 12" INV=608.43 |
| ⑪ | EX CB RIM=614.03 N 12" INV=611.68 |
| ⑫ | EX MH RIM=614.25 S 12" INV=610.30 S 12" INV=608.50 |
| ⑬ | EX CB RIM=614.10 S 12" INV=609.05 |
| ⑭ | EX SAN MH RIM=614.45 N 8" INV=607.75 E-W 8" INV=607.55 |
| ⑮ | EX WVB RIM=614.73 N-S 12" T/M=609.53 |
| ⑯ | EX CB RIM=614.73 N-S 12" T/M=609.53 |
| ⑰ | EX SAN MH RIM=614.29 N-W 8" INV=607.90 |
| ⑱ | EX MH RIM=614.37 S 12" INV=610.92 E 12" INV=608.72 |
| ⑳ | EX CB RIM=614.23 S 12" INV=611.63 |
| ㉑ | EX CB RIM=613.67 S 12" INV=609.19 |
| ㉒ | EX MH RIM=615.01 S-NE 15" INV=609.81 |
| ㉓ | EX MH RIM=613.85 S 12" INV=610.65 E 12" INV=608.35 |
| ㉔ | EX MH RIM=614.72 E-W 12" INV=607.02 |
| ㉕ | EX CB RIM=613.67 S 12" INV=611.30 |
| ㉖ | EX CB RIM=613.50 N 12" INV=611.30 |
| ㉗ | EX CB RIM=613.70 NW 12" INV=610.02 S 12" INV=608.60 |
| ㉘ | EX SAN MH RIM=615.69 N 8" INV=610.89 E-W 8" INV=610.53 |
| ㉙ | EX CB RIM=614.37 N 12" INV=611.63 |
| ㉚ | EX CB RIM=614.37 N 12" INV=611.63 |
| ㉛ | EX CB RIM=614.30 S 12" INV=608.90 |
| ㉜ | EX CB RIM=614.18 S 8" INV=610.58 |
| ㉝ | EX SAN MH RIM=614.32 E 8" INV=608.39 S-W 12" INV=608.07 |
| ㉞ | EX MH RIM=615.49 N 8" INV=610.86 SE 12" INV=610.86 |
| ㉟ | EX SAN MH RIM=614.70 E 12" INV=610.10 S 24" INV=609.15 W 24" INV=609.00 |
| ㊱ | EX MH RIM=615.11 S 12" INV=611.64 W 12" INV=608.48 |
| ㊲ | EX MH RIM=615.04 S 12" INV=609.94 |
| ㊳ | EX CB RIM=614.50 N 8" INV=611.90 |
| ㊴ | EX CB RIM=615.01 S 12" INV=615.01 N 12" INV=612.48 |
| ㊵ | EX CB RIM=615.32 E 6" INV=611.02 |
| ㊶ | EX CB RIM=615.82 N-SE 15" INV=612.72 |
| ㊷ | EX WVB RIM=615.54 T/M=610.92 |
| ㊸ | EX MH RIM=616.90 E-W 84" INV=603.34 |
| ㊹ | EX CB RIM=616.42 NW 10" INV=611.87 N-S 15" INV=611.87 |
| ㊺ | EX CB RIM=617.26 SE 12" INV=615.06 |
| ㊻ | EX MH RIM=617.40 S 12" INV=613.15 S 12" INV=611.20 |
| ㊼ | EX CB RIM=614.83 S 8" INV=611.78 E-W 8" INV=611.58 |
| ㊽ | EX CB RIM=616.67 W 8" INV=611.32 |
| ㊾ | EX MH RIM=620.34 N 15" INV=613.29 S 15" INV=613.09 |
| ㊿ | EX CB RIM=620.26 N 12" INV=613.91 S 12" INV=612.71 |

| | |
|------|--|
| DATE | |
| BY | |
| DATE | |
| BY | |
| DATE | |
| BY | |

PROFILE SURVEYED, PLOTTED, CHECKED, SIGNATURE



| | | | |
|---|---|---|--|
| Ⓐ | STA 16+04, 27.86'RT RIM=614.25 PRECAST "T" MANHOLE FOR 84"DIA. STORM SEWER WITH T1F, CL, E-W 84" INV=603.04 | Ⓧ | STA 16+67, 49'RT RIM=614.18 MANHOLE TYPE A, 5'DIA. WITH T1F, CL, RIM=614.18 N-S 36" INV=603.08 |
| Ⓑ | STA 16+18.52, 27.86'RT REINFORCED CONCRETE PIPE ELBOW 84"-(45'BEND) | Ⓨ | 7" STORM SEWERS, CLASS A, TYPE 2, 84" @ 0.0595% (15.2) |
| Ⓒ | STA 16+49.5, 58.84'RT REINFORCED CONCRETE PIPE ELBOW 84"-(45'BEND) | Ⓩ | 37" STORM SEWERS, CLASS A, TYPE 2, 84" @ 0.0595% (84.0) |
| Ⓓ | STA 16+80.5, 28'RT PRECAST TRANSITION PIPE 84"x36" DIA. STORM SEWER | Ⓔ | 475' STORM SEWERS, CLASS A, TYPE 2, 84" @ 0.0595% (1191.1) |
| Ⓕ | STA 16+77, 28'RT RIM=613.60 MANHOLE TYPE A, 5'DIA. WITH T1F, CL E-S 36" INV=603.09 | Ⓕ | 148' STORM SEWERS, CLASS A, TYPE 2, 84" @ 0.02% (1454.7) |
| Ⓖ | JACKING PIT (RECEIVING) ESTIMATED DIMENSIONS, 15'x15' | Ⓖ | 128' STORM SEWERS, JACKED IN PLACE, CLASS A, 84" @ 0.02% |
| Ⓚ | 7" STORM SEWERS, CLASS A, TYPE 2, 36" @ 0.057% (15.2) | Ⓛ | 21' STORM SEWERS, CLASS A, TYPE 2, 36" @ 0.048% (44.1) |
| Ⓜ | 5' STORM SEWERS, CLASS A, TYPE 2, 36" @ 0.098% (10.9) | Ⓜ | 5' STORM SEWERS, CLASS A, TYPE 2, 36" @ 0.098% (10.9) |

PROPOSED IMPROVEMENT

- NOTES:
- ALL RIM ELEVATIONS OF STRUCTURES IN THE PROPOSED CURB LINE ARE GIVEN TO THE EDGE OF PAVEMENT. ALL OTHER RIM ELEVATIONS ARE GIVEN TO THE CENTER OF STRUCTURES. ALL CALLOUTS REFERENCE THE CENTERLINE OF CONSTRUCTION OF 71ST STREET.
 - (X,X) - DENOTES CUBIC YARDS OF TRENCH BACKFILL.
 - DIRECT CONNECTIONS OF STORM SEWERS WILL NOT BE PAID FOR SEPARATELY BUT SHALL BE INCLUDED IN THE COST OF THE STORM SEWER.
 - WHEN 10FT SEPARATION IS NOT MAINTAINED BETWEEN THE WATER MAIN AND 84" RCP THE JOINTS OF THE PIPE SHALL BE SEALED WITH TYLOX, TYPE C GASKETS, OR AN APPROVED EQUIVALENT CONFORMING TO ASTM STANDARDS C443 AND C361. GASKETS SHALL BE CONSIDERED INCIDENTAL TO THE COST OF STORM SEWER WHEN REQUIRED.

BENCH MARK: BWV249

SQUARE CUT ON N CONC BASE OF RR SIGNAL MAST ARM BASE ON S ROW OF 71ST STREET 1/2 MILE WEST OF HARLEM AVENUE ELEVATION=620.57