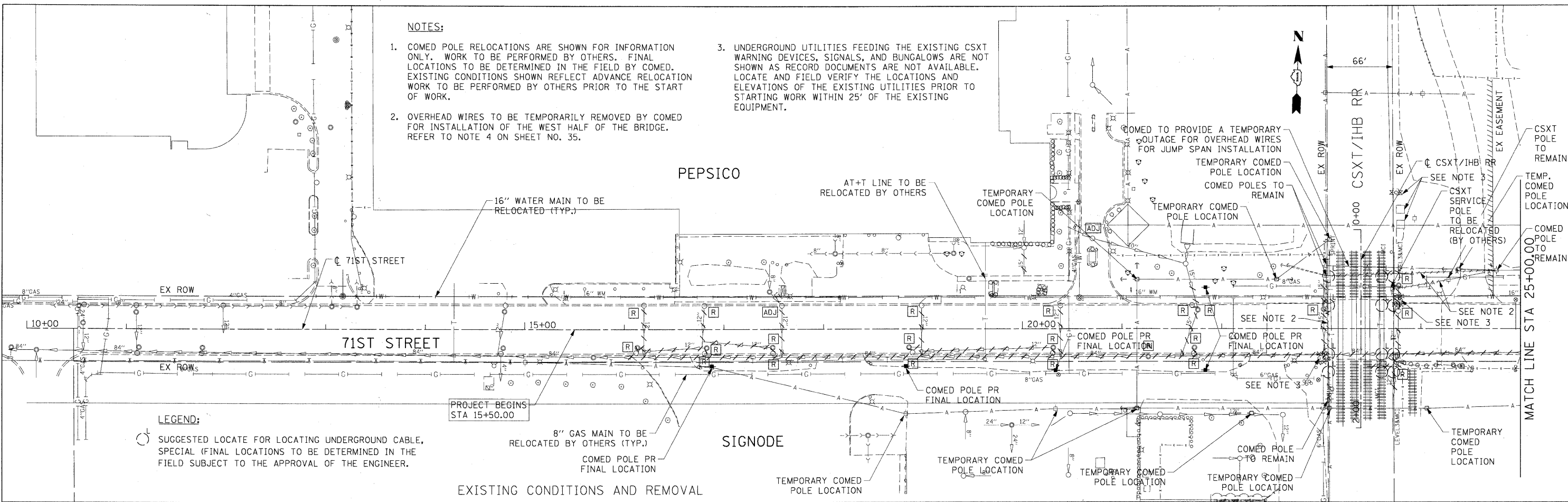


NOTES:

- COMED POLE RELOCATIONS ARE SHOWN FOR INFORMATION ONLY. WORK TO BE PERFORMED BY OTHERS. FINAL LOCATIONS TO BE DETERMINED IN THE FIELD BY COMED. EXISTING CONDITIONS SHOWN REFLECT ADVANCE RELOCATION WORK TO BE PERFORMED BY OTHERS PRIOR TO THE START OF WORK.
- OVERHEAD WIRES TO BE TEMPORARILY REMOVED BY COMED FOR INSTALLATION OF THE WEST HALF OF THE BRIDGE. REFER TO NOTE 4 ON SHEET NO. 35.
- UNDERGROUND UTILITIES FEEDING THE EXISTING CSXT WARNING DEVICES, SIGNALS, AND BUNGALOWS ARE NOT SHOWN AS RECORD DOCUMENTS ARE NOT AVAILABLE. LOCATE AND FIELD VERIFY THE LOCATIONS AND ELEVATIONS OF THE EXISTING UTILITIES PRIOR TO STARTING WORK WITHIN 25' OF THE EXISTING EQUIPMENT.



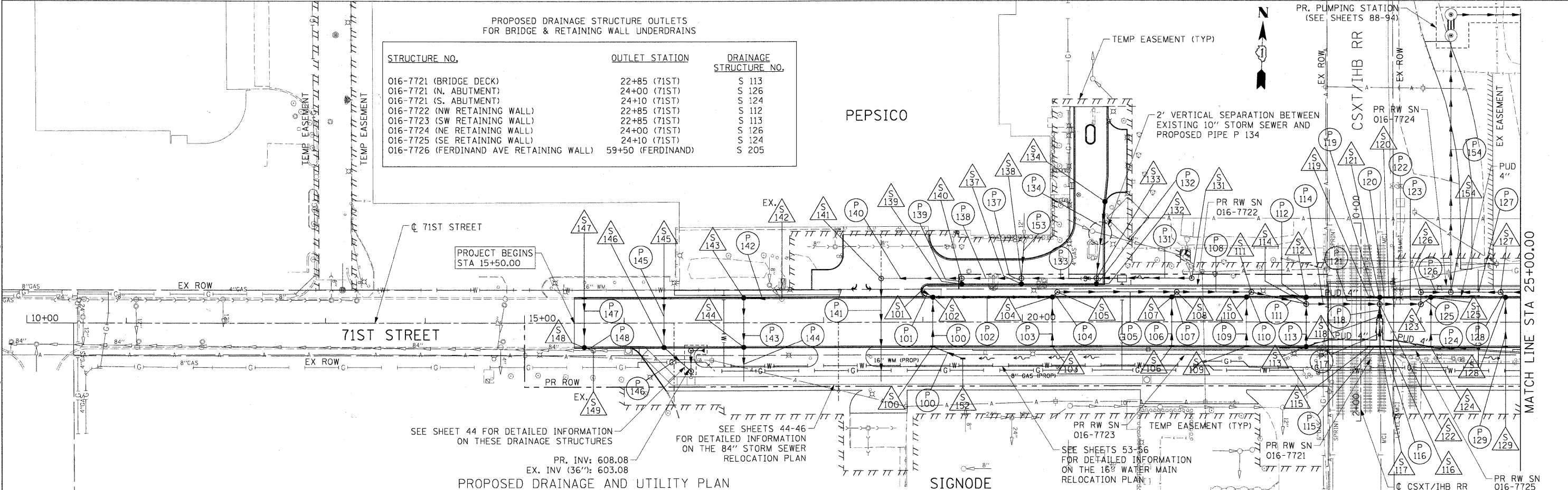
LEGEND:

○ SUGGESTED LOCATE FOR LOCATING UNDERGROUND CABLE, SPECIAL (FINAL LOCATIONS TO BE DETERMINED IN THE FIELD SUBJECT TO THE APPROVAL OF THE ENGINEER.

EXISTING CONDITIONS AND REMOVAL

PROPOSED DRAINAGE STRUCTURE OUTLETS FOR BRIDGE & RETAINING WALL UNDERDRAINS

STRUCTURE NO.	OUTLET STATION	DRAINAGE STRUCTURE NO.
016-7721 (BRIDGE DECK)	22+85 (71ST)	S 113
016-7721 (N. ABUTMENT)	24+00 (71ST)	S 126
016-7721 (S. ABUTMENT)	24+10 (71ST)	S 124
016-7722 (NW RETAINING WALL)	22+85 (71ST)	S 112
016-7723 (SW RETAINING WALL)	22+85 (71ST)	S 113
016-7724 (NE RETAINING WALL)	24+00 (71ST)	S 126
016-7725 (SE RETAINING WALL)	24+10 (71ST)	S 124
016-7726 (FERDINAND AVE RETAINING WALL)	59+50 (FERDINAND)	S 205



PROPOSED DRAINAGE AND UTILITY PLAN

SEE SHEET 44 FOR DETAILED INFORMATION ON THESE DRAINAGE STRUCTURES

SEE SHEETS 44-46 FOR DETAILED INFORMATION ON THE 84" STORM SEWER RELOCATION PLAN

PR. INV: 608.08
EX. INV (36"): 603.08

SEE SHEETS 53-56 FOR DETAILED INFORMATION ON THE 16" WATER MAIN RELOCATION PLAN



USER NAME = wheelnt	DESIGNED - KLK	REVISED -
PLOT SCALE = 50.000' / in.	DRAWN - KLK	REVISED -
PLOT DATE = 3/16/2011	CHECKED - EEE	REVISED -
	DATE - March 17, 2011	REVISED -

**STATE OF ILLINOIS
DEPARTMENT OF TRANSPORTATION**

DRAINAGE AND UTILITY PLAN

SCALE: 1"=50' SHEET NO. 1 OF 3 SHEETS STA 15+50.00 TO STA 25+00.00

F.A.U. RTE.	SECTION	COUNTY	TOTAL SHEETS	SHEET NO.
1537	06-00050-00-GS	COOK	209	47
FED. ROAD DIST. NO. 1 ILLINOIS FED. AID PROJECT CRE-90037091				CONTRACT NO. 63556