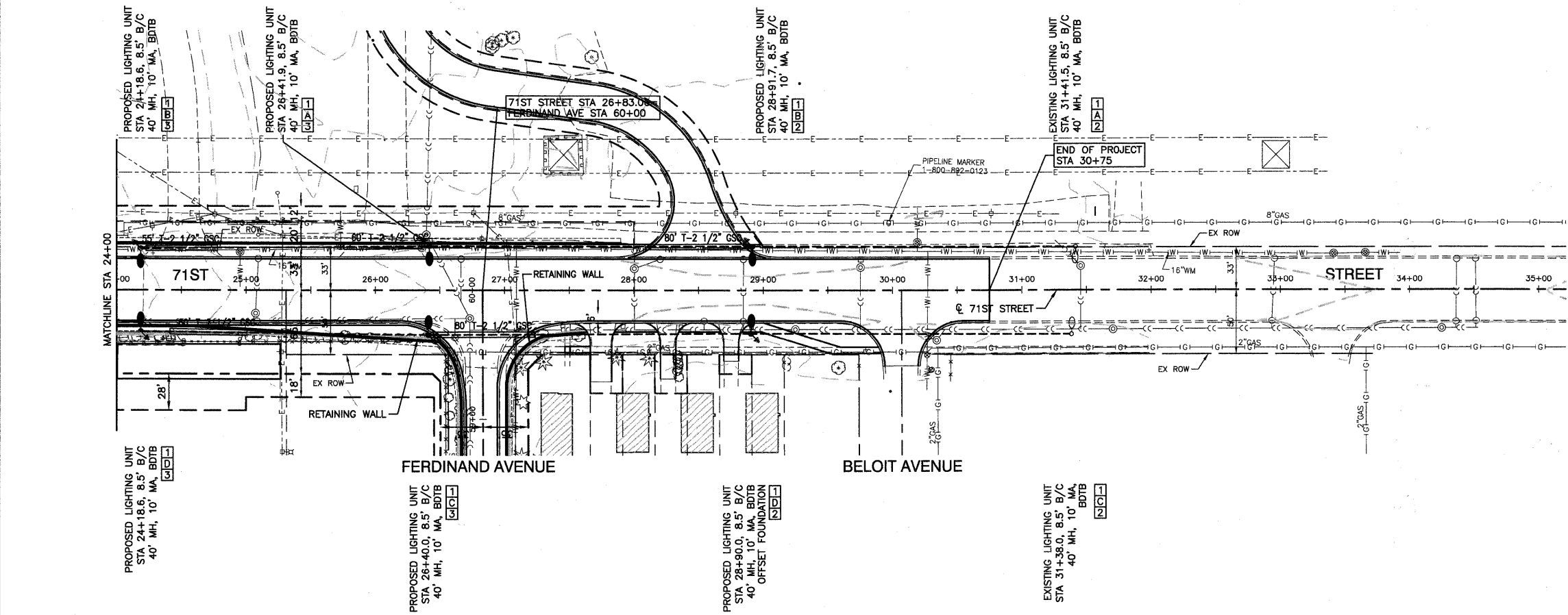
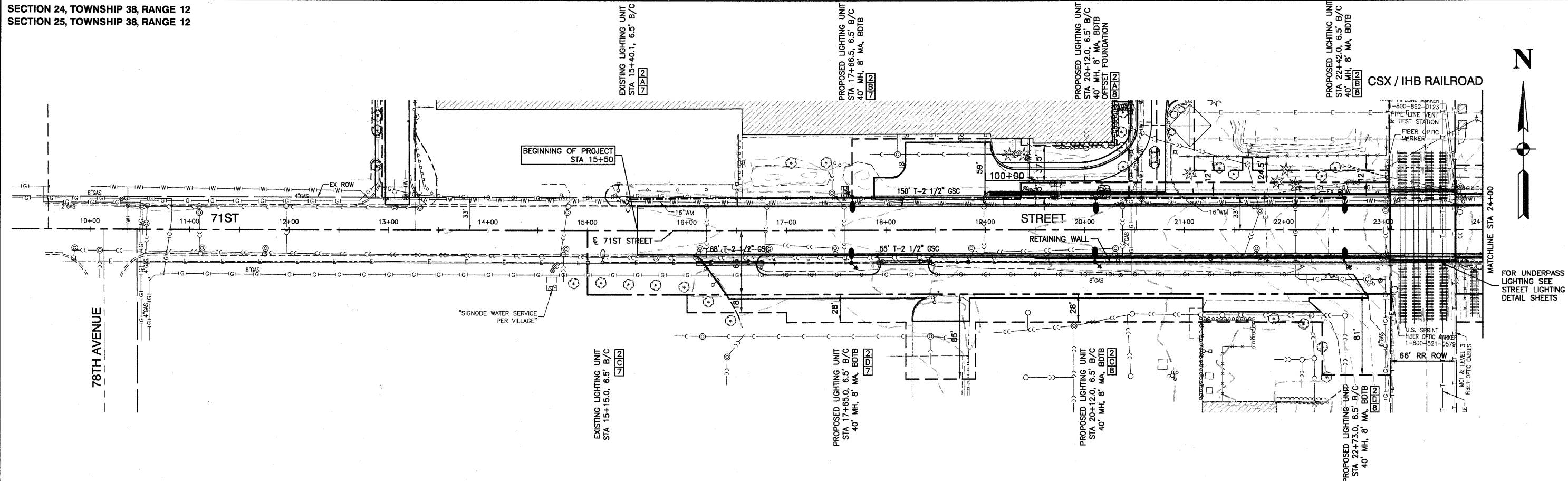


SECTION 24, TOWNSHIP 38, RANGE 12
SECTION 25, TOWNSHIP 38, RANGE 12

PLAN	SURVEYED	DATE
	PLOTTED	
	CHECKED	
	REVIEWED	
	NO. OF WAY CHECKED	
	CADD FILE NAME	

PROFILE	SURVEYED	DATE
	PLOTTED	
	CHECKED	
	REVIEWED	
	NO. NOTED	



NOTE TO CONTRACTOR
THE EXISTING CONTROLLER NO.1 IS LOCATED AT STATION 36+31.7, 6.5' B/C IN THE NORTH PARKWAY OF 71ST STREET. REFER TO THE SINGLE LINE DIAGRAM.

- LIGHTING LEGEND:**
- EXISTING STREET LIGHT-250W HPS
 - PROPOSED STREET LIGHT-250W HPS
 - PROPOSED UNIT DUCT, 6-1/C, NO.6 AWG AND 1/C NO.8 GROUND, 600V IN 1-1/2" DUCT
 - PROPOSED UNIT DUCT, 4-1/C, NO.6 AWG AND 1/C NO.8 GROUND, 600V IN 1-1/4" DUCT
 - ✕ GR GROUND ROD, 5/8" DIA. x 10'
 - (R) REMOVAL OF EXISTING STREET LIGHT & FOUNDATION
 - MH MOUNTING HEIGHT
 - MA MAST ARM
 - B/C BACK OF CURB
 - BDTB BREAKAWAY DEVICE, TRANSFORMER BASE, 15" BOLT CIRCLE
- POLE IDENTIFICATION**
- 1 CABINET NUMBER
1 CIRCUIT
1 POLE POSITION

FILE NAME = 06953-LGHT-01 - P02

USER NAME =	DESIGNED - PAP	REVISED -
	CHECKED - DWS	REVISED -
PLOT SCALE =	DRAWN - PS	REVISED -
PLOT DATE = 12/23/10	CHECKED - AG	REVISED -

STATE OF ILLINOIS
DEPARTMENT OF TRANSPORTATION

71ST STREET PROPOSED STREET LIGHTING		F.A.U. RTE.	SECTION	COUNTY	TOTAL SHEETS	SHEET NO.
		1537	06-00050-00-GS	COOK	209	80
SCALE: 1"=50'		SHEET NO. 80 OF 209 SHEETS		CONTRACT NO. 63556		
		STA. 15+50 TO STA. 30+75		FED. ROAD DIST. NO. 1 ILLINOIS FED. AID PROJECT CRE-9003(709)		