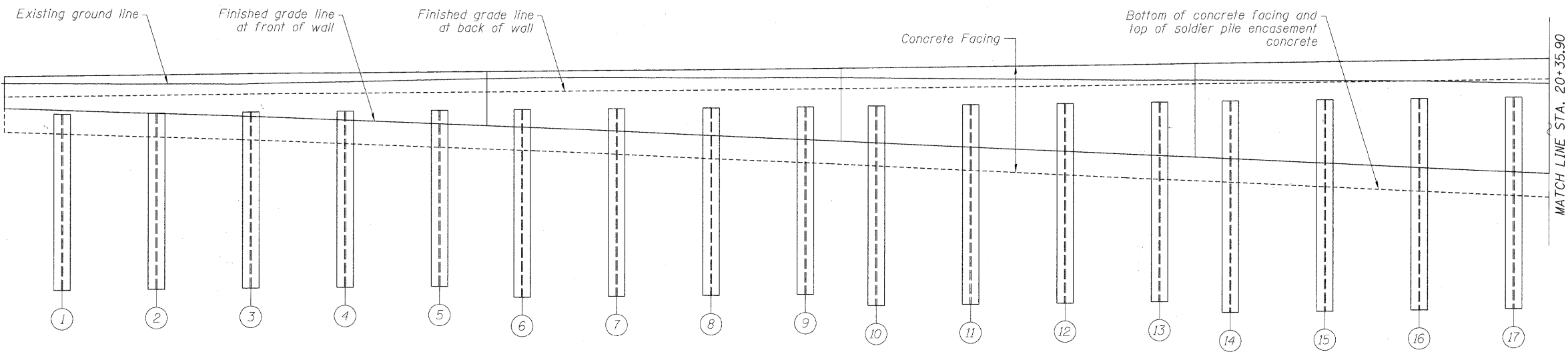


PLAN
(All dimensions are measured along front face of wall)



ELEVATION

SHAFT SIZES

| PILE SIZE | SHAFT EXCAVATION SIZE |
|-----------|-----------------------|
| W36x302 | 4'-0" ϕ |
| W36x282 | 4'-0" ϕ |
| W33x201 | 3'-6" ϕ |
| W21x147 | 2'-6" ϕ |
| W21x101 | 2'-6" ϕ |

PILE SUMMARY

| PILE NO. | PILE SIZE | LENGTH | BOTTOM ELEVATION | TOP ELEVATION | PILE NO. | PILE SIZE | LENGTH | BOTTOM ELEVATION | TOP ELEVATION | PILE NO. | PILE SIZE | LENGTH | BOTTOM ELEVATION | TOP ELEVATION |
|----------|-----------|--------|------------------|---------------|----------|-----------|--------|------------------|---------------|----------|-----------|--------|------------------|---------------|
| 1 | W21x101 | 15.00 | 597.00 | 612.00 | 7 | W21x101 | 16.00 | 596.72 | 612.72 | 13 | W21x101 | 17.00 | 596.38 | 613.38 |
| 2 | W21x101 | 15.00 | 597.12 | 612.12 | 8 | W21x101 | 16.00 | 596.85 | 612.85 | 14 | W21x101 | 18.00 | 595.38 | 613.38 |
| 3 | W21x101 | 15.00 | 597.25 | 612.25 | 9 | W21x101 | 16.00 | 596.97 | 612.97 | 15 | W21x101 | 18.00 | 595.37 | 613.37 |
| 4 | W21x101 | 15.00 | 597.37 | 612.37 | 10 | W21x101 | 17.00 | 596.06 | 613.06 | 16 | W21x101 | 18.00 | 595.36 | 613.36 |
| 5 | W21x101 | 15.00 | 597.49 | 612.49 | 11 | W21x101 | 17.00 | 596.19 | 613.19 | 17 | W21x101 | 18.00 | 595.35 | 613.35 |
| 6 | W21x101 | 16.00 | 596.60 | 612.60 | 12 | W21x101 | 17.00 | 596.31 | 613.31 | | | | | |

FILE NAME = F:\60155877_2006_CAD\001_Drawing\Sheet\Structure\1916-7722_1001-sha26-pla R&E 1.dgn



| | | |
|--------------------------------|-------------------|-----------|
| USER NAME = dabezicd | DESIGNED - DD | REVISED - |
| PLOT SCALE = 0.10000 '1' / in. | DRAWN - DD | REVISED - |
| PLOT DATE = 2/17/2011 | CHECKED - EJO | REVISED - |
| | DATE - 11/20/2010 | REVISED - |

**STATE OF ILLINOIS
DEPARTMENT OF TRANSPORTATION**

**SOLDIER PILE PLAN & ELEVATION I
STRUCTURE NO. 016-7722**

SCALE: SHEET NO. 26 OF 65 SHEETS STA. 19+05 TO STA. 20+35.90

| F.A.U. RTE. | SECTION | COUNTY | TOTAL SHEETS | SHEET NO. |
|---------------------------|----------------|--------|--------------|--------------------|
| 1537 | 06-00050-00-GS | COOK | 209 | 116 |
| | | | | CONTRACT NO. 63556 |
| ILLINOIS FED. AID PROJECT | | | | |