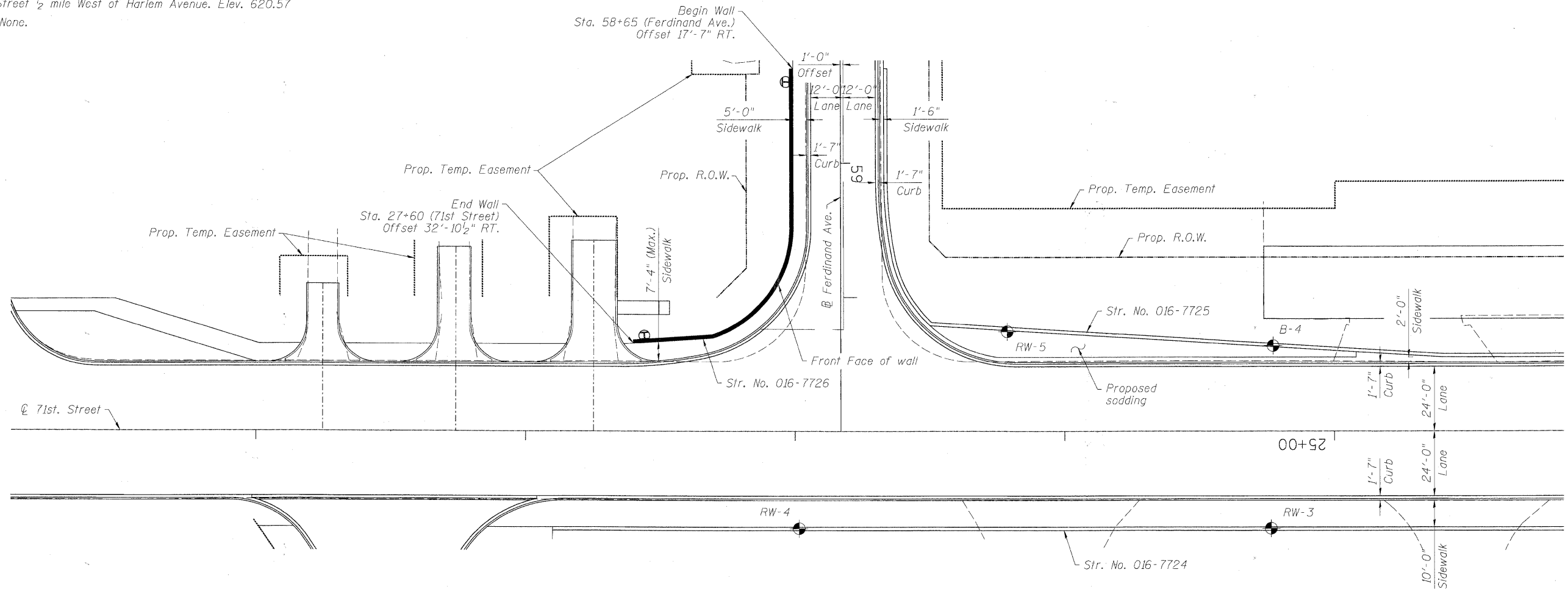


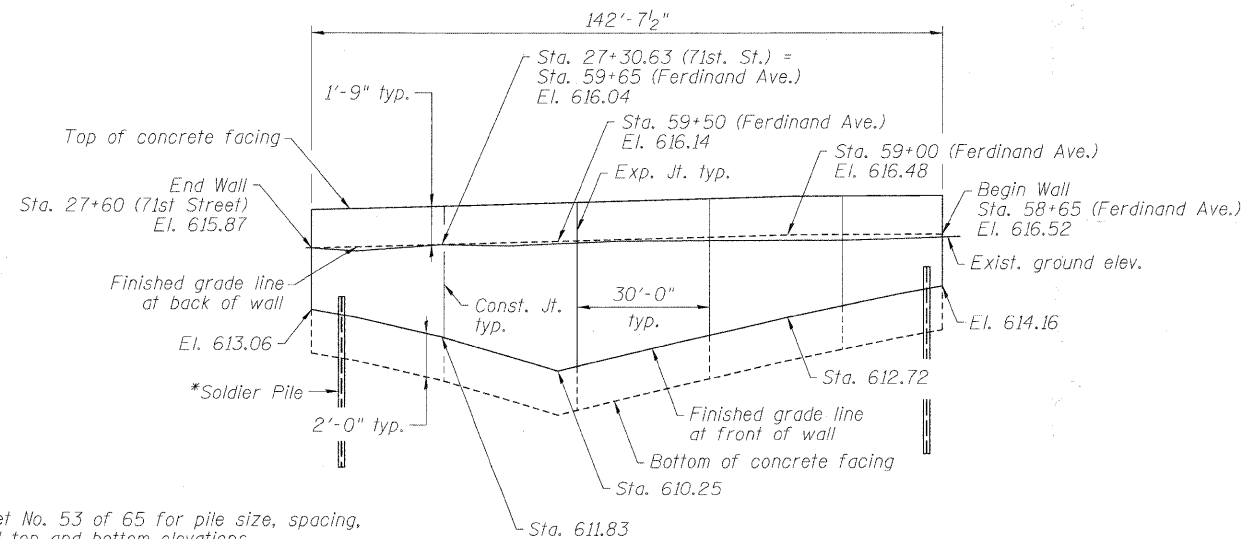
Bench Mark: BVW249 Square cut on N. conc. base of RR signal mast arm base on S. row of 71st Street 1/2 mile West of Harlem Avenue. Elev. 620.57
Existing Structure: None.



PLAN

NOTES:

- Offsets are measured from the ϕ of 71st. St. and ϕ of Ferdinand Ave. to the front face of wall.
- Railing on top of wall shown for clarity.



*See Sheet No. 53 of 65 for pile size, spacing, length and top and bottom elevations.

ELEVATION

(Unfolded elevation view)
(Looking @ front face of wall)

FILE NAME = P:\60155877_0000_CAD\001_Drawing\Sheets\Structural\016-7726_1001-11-152-SP&E.dgn



USER NAME = dabezicd	DESIGNED - DD	REVISED -
PLOT SCALE = 0:1.0000 '1' / 1"	DRAWN - DD	REVISED -
PLOT DATE = 2/17/2011	CHECKED - EJO	REVISED -
	DATE - 10/11/2010	REVISED -

STATE OF ILLINOIS
DEPARTMENT OF TRANSPORTATION

GENERAL PLAN & ELEVATION
STRUCTURAL NO. 016-7726

SCALE: SHEET NO. 52 OF 65 SHEETS STA. TO STA.

F.A.U. RTE.	SECTION	COUNTY	TOTAL SHEETS	SHEET NO.
1537	06-00050-00-GS	COOK	209	142
CONTRACT NO. 63556			ILLINOIS FED. AID PROJECT	