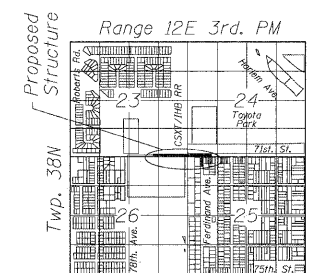


OVERALL PLAN

GENERAL NOTES:

1. Form liner manufacturer shall coordinate work with other trades on the job site.
2. See Structural and Civil Drawings for dimensions and placement of cast in place concrete.
3. Form Liner Drawings show relationship and layout of form liners and the intent for final appearance. Contractor is responsible for design of formwork, including structural stability.
4. Lines and levels of formwork and form liner patterns to be within allowable manufacturer's tolerances.
5. CAD files of 2D pattern line drawings will be provided to form liner manufacturer for producing the master mold.
6. Texture for form liner to be selected from form liner manufacturer's standard texture. Basic wall texture: Smooth or light sandblast #1. Texture for the Design A: Smooth. Texture for Design C: Sandblast #2. Texture for Design B and C: Smooth and Sandblast, as shown on details.
7. Stain color to be selected from stain manufacturer's standard color chart.



LOCATION SKETCH



USER NAME = rstavskom	DESIGNED - MR	REVISED -
PLOT SCALE = 0:1.0000' / in.	DRAWN - MR	REVISED -
PLOT DATE = 3/16/2011	CHECKED - DV	REVISED -
	DATE - 10/11/2010	REVISED -

STATE OF ILLINOIS
DEPARTMENT OF TRANSPORTATION

FORM LINER OVERALL LOCATION PLAN
AND GENERAL NOTES

SCALE: SHEET NO. 1 OF 8 SHEETS STA. TO STA.

F.A.U. RTE.	SECTION	COUNTY	TOTAL SHEETS	SHEET NO.
1537	06-00050-00-GS	COOK	209	156
CONTRACT NO. 63556				
ILLINOIS FED. AID PROJECT				

FILE NAME = P:\63556\77\0200_CAD\0201_Drawings\Sheet\Arch\Structure\A\A\156_Arch\Plan_Overall.dwg