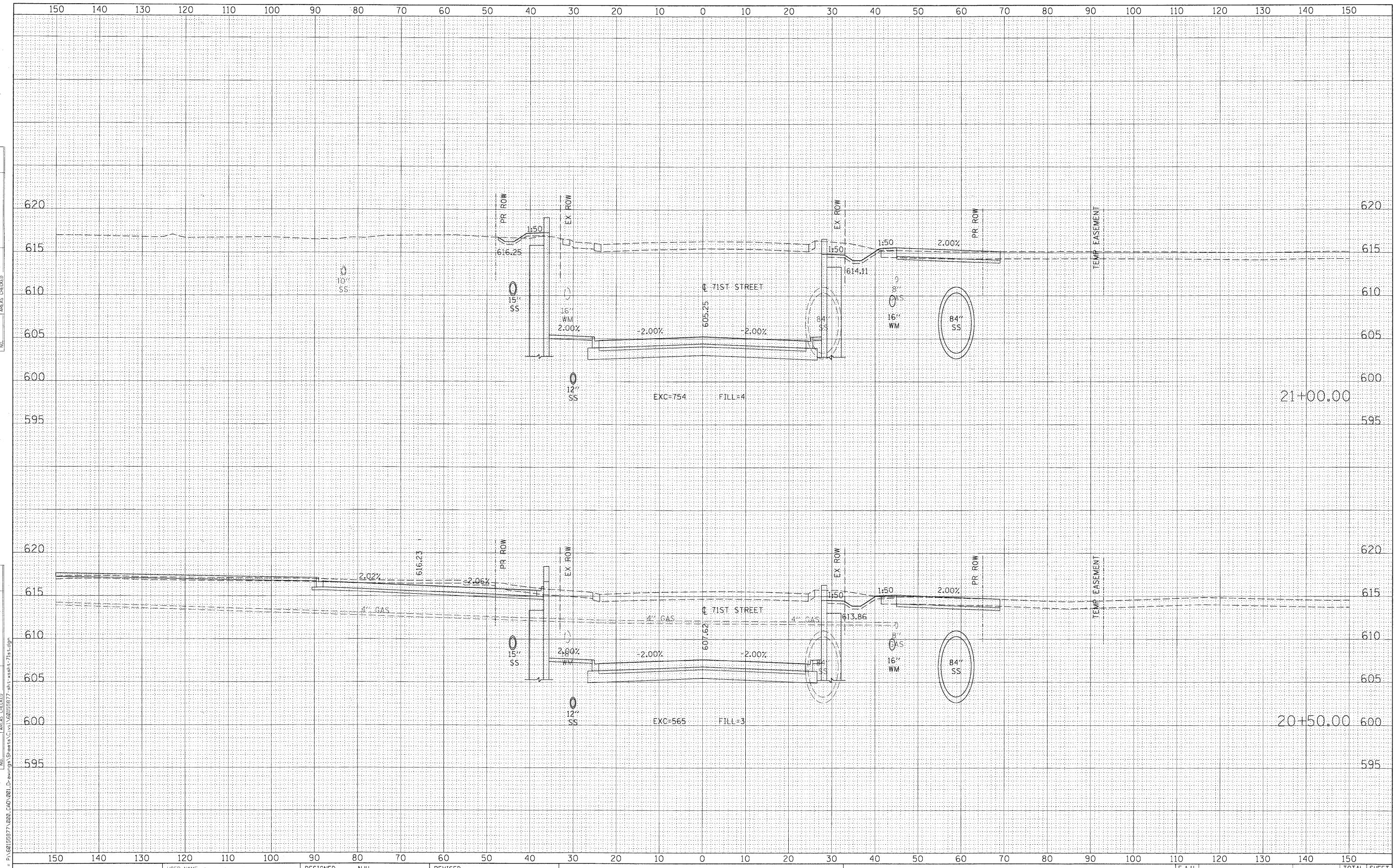


DATE	
BY	
FINAL SURVEY	SURVEYED
NOTE BOOK	PLOTTED
NO.	TEMPLATE
	AREAS CHECKED

DATE	
BY	
ORIGINAL SURVEY	SURVEYED
NOTE BOOK	PLOTTED
NO.	TEMPLATE
	AREAS CHECKED



FILE NAME = P:\62155977\200_CAD\001_Drawing\Sheet\Sheet\62155977-ult-xahz-71st.dgn



USER NAME = manuj	DESIGNED - NJH	REVISED -
PLOT SCALE = 10.000' / 1"	DRAWN - NJH	REVISED -
PLOT DATE = 2/17/2011	CHECKED - TJW	REVISED -
	DATE - DECEMBER 12, 2010	REVISED -

STATE OF ILLINOIS
DEPARTMENT OF TRANSPORTATION

CROSS SECTIONS - 71ST STREET

H: 1"=10', V: 1"=5' SHEET NO. 7 OF 20 SHEETS STA. 20+50.00 TO STA. 21+00.00

F.A.U. RTE.	SECTION	COUNTY	TOTAL SHEETS	SHEET NO.
1537	06-00050-00-CA	COOK	209	188
				CONTRACT NO. 63556
ILLINOIS FED. AID PROJECT				