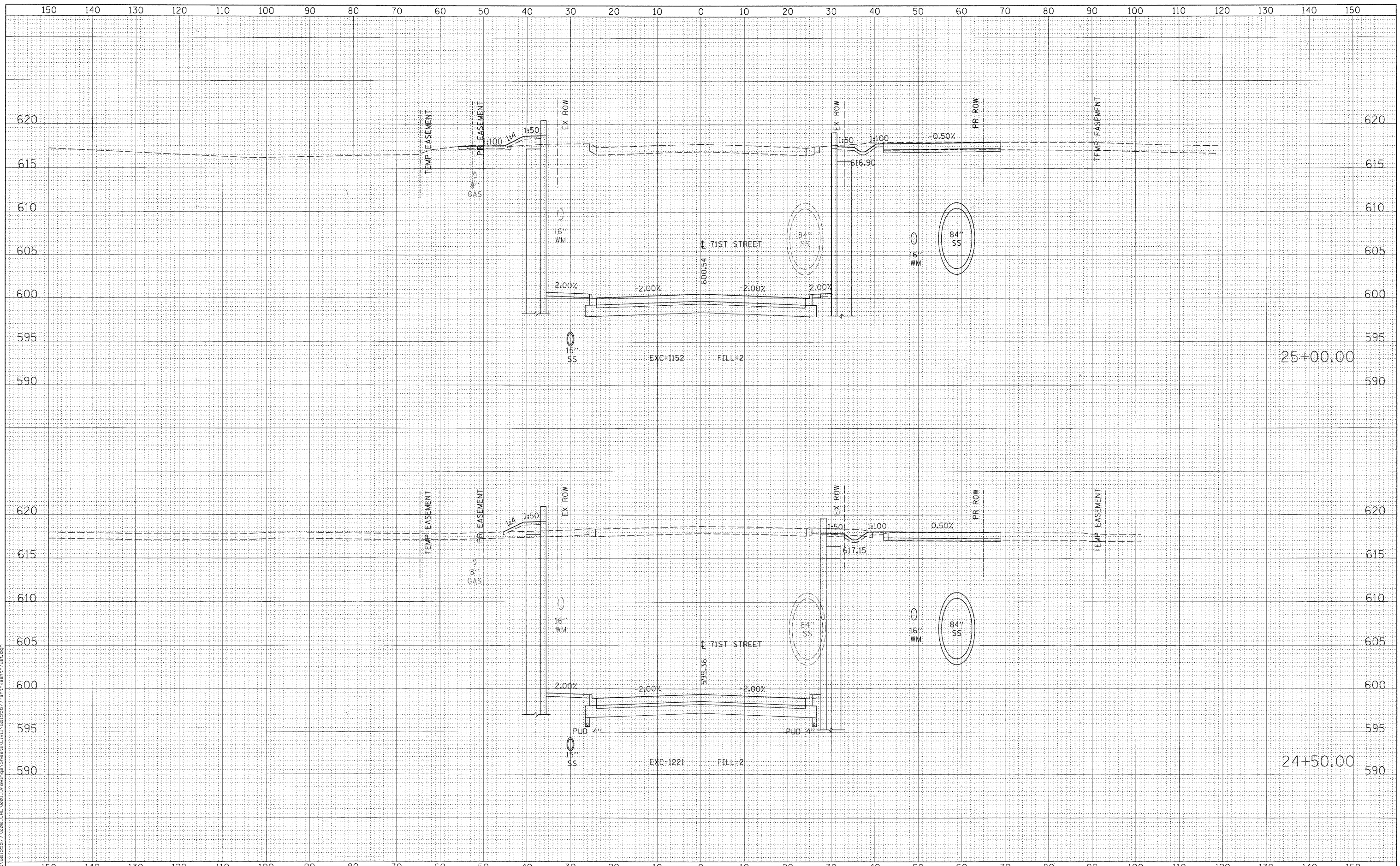


DATE	
BY	
FINAL SURVEY	SURVEYED
NOTE BOOK NO.	PLOTTED
	TEMPLATE
	AREAS CHECKED

DATE	
BY	
ORIGINAL SURVEY	SURVEYED
NOTE BOOK NO.	PLOTTED
	TEMPLATE
	AREAS CHECKED



USER NAME = merrj	DESIGNED - NJH	REVISED -
PLOT SCALE = 10.000' / in.	DRAWN - NJH	REVISED -
PLOT DATE = 2/17/2011	CHECKED - TJW	REVISED -
	DATE - DECEMBER 12, 2010	REVISED -

**STATE OF ILLINOIS
DEPARTMENT OF TRANSPORTATION**

CROSS SECTIONS - 71ST STREET

H: 1"=10', V: 1"=5'

SHEET NO. 11 OF 20 SHEETS

STA. 24+50.00 TO STA. 25+00.00

F.A.U. RTE.	SECTION	COUNTY	TOTAL SHEETS	SHEET NO.
1537	06-00050-00-GA	COOK	209	192
				CONTRACT NO. 63556
ILLINOIS FED. AID PROJECT				