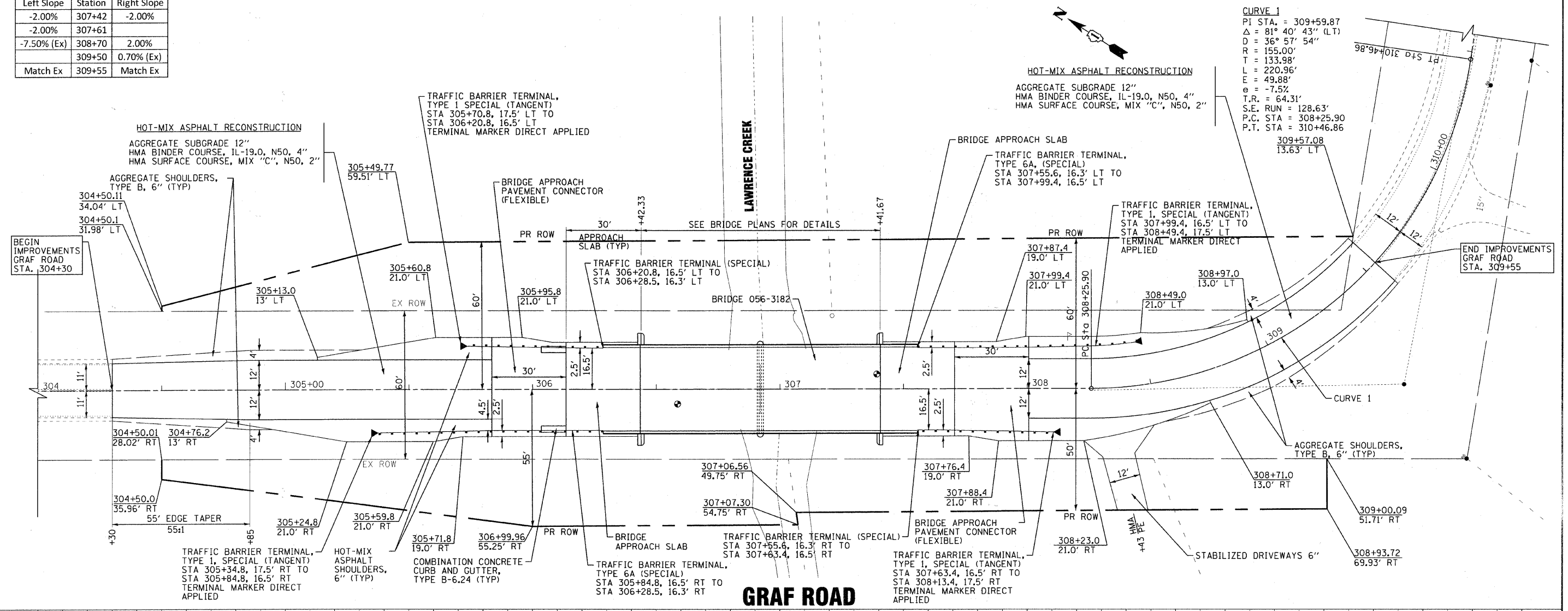


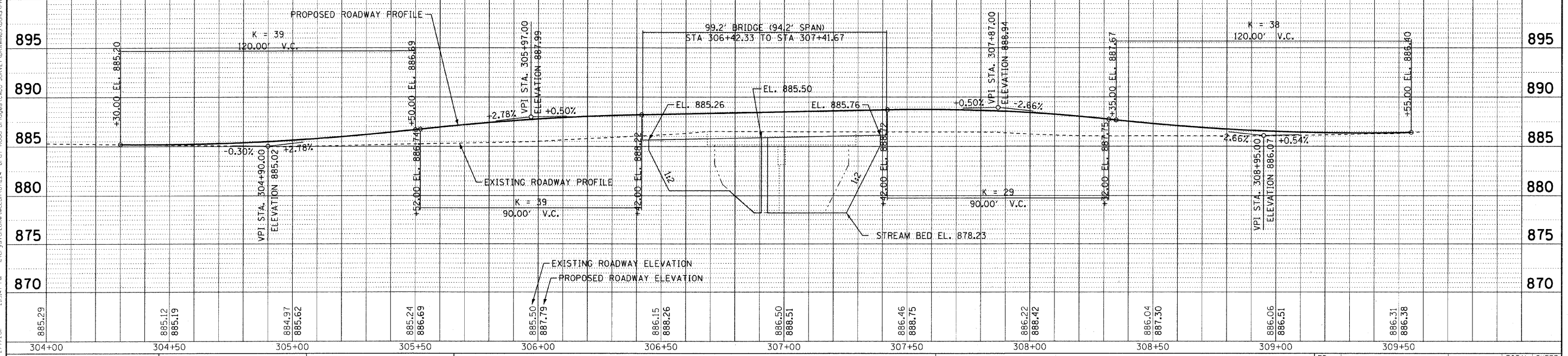
PAVEMENT SUPERELEVATION

Left Slope	Station	Right Slope
-2.00%	307+42	-2.00%
-2.00%	307+61	
-7.50% (Ex)	308+70	2.00%
	309+50	0.70% (Ex)
Match Ex	309+55	Match Ex



CURVE 1
 PI STA. = 309+59.87
 Δ = 81° 40' 43" (LT)
 D = 36° 57' 54"
 R = 155.00'
 T = 133.98'
 L = 220.96'
 E = 49.88'
 e = -7.5%
 T.R. = 64.31'
 S.E. RUN = 128.63'
 P.C. STA = 308+25.90
 P.T. STA = 310+46.86

GRAF ROAD



CONTRACT NO. 03-1-358-06
 DATE: 10/08/10
 DRAWN: BCD
 CHECKED: MDW
 DESIGNED: CAC
 REVISIONS:
 02/01/11 PER MCDOT
 02/01/11 PER IDOT



DESIGNED - CAC	REVISED - 12/31/10 PER MCDOT
DRAWN - BCD	REVISED - 02/01/11 PER MCDOT
CHECKED - MDW	REVISED - 02/01/11 PER IDOT
DATE - 10/08/10	FILE -

**MCHENRY COUNTY DIVISION OF TRANSPORTATION
 GRAF ROAD BRIDGE OVER
 LAWRENCE CREEK**

PLAN & PROFILE

SCALE: H: 1"=20' V: 1"=5'

STA. 304+00 TO STA. 310+00

TR. RTE.	SECTION	COUNTY	TOTAL SHEETS	SHEET NO.
0037	06-00322-00-BR	MCHENRY	54	12
C-91-358-06		CONTRACT NO. 63569		
FED. ROAD DIST. NO. 1 ILLINOIS FED. AID PROJECT BR05-0001683				