

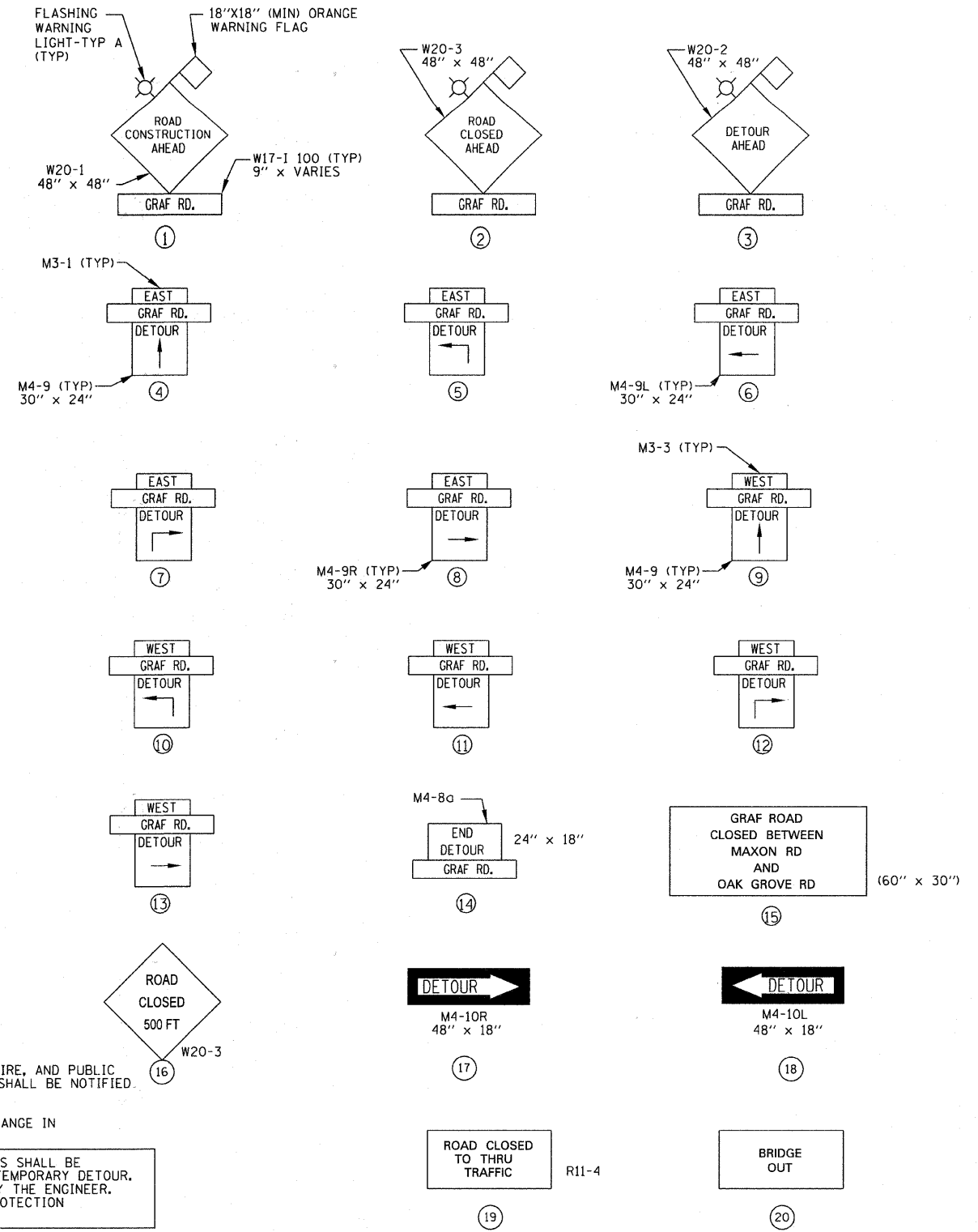
LEGEND

- ◀◀◀ WESTBOUND DETOURED TRAFFIC
- ▶▶▶ EASTBOUND DETOURED TRAFFIC
- DETOUR ROUTE
- ↑ SIGN
- ↓ TYPE III BARRICADES

MAINTENANCE OF TRAFFIC NOTES:

1. DURING CONSTRUCTION STAGING OPERATIONS, THE HARVARD POLICE, FIRE, AND PUBLIC WORKS DEPARTMENT, CHEMUNG TOWNSHIP AND THE COUNTY SHERIFF SHALL BE NOTIFIED IN WRITING 48 HOURS PRIOR TO STREET CLOSURES ON GRAF ROAD.
2. THE ENGINEER SHALL BE INFORMED 48 HOURS IN ADVANCE OF ANY CHANGE IN CONSTRUCTION STAGING.
3. THE FURNISHING, INSTALLING, AND RELOCATION OF ALL TRAFFIC SIGNS SHALL BE INCLUDED IN THE COST OF TRAFFIC CONTROL AND PROTECTION FOR TEMPORARY DETOUR. ALL CONFLICTING TRAFFIC SIGNS SHALL BE COVERED AS DIRECTED BY THE ENGINEER. THIS SHALL BE INCLUDED IN THE COST OF TRAFFIC CONTROL AND PROTECTION FOR TEMPORARY DETOUR.
4. EROSION AND SEDIMENT CONTROLS SHALL BE INSTALLED PRIOR TO START OF CONSTRUCTION WITH CONTINUED MAINTENANCE FOR THE DURATION OF CONSTRUCTION, SEE EROSION CONTROL SHEETS FOR ADDITIONAL INFORMATION.
5. THE CONTRACTOR SHALL MAINTAIN EMERGENCY VEHICLE AND LOCAL TRAFFIC DURING THE CONSTRUCTION OF GRAF ROAD AND GRAF BRIDGE OVER THE LAWRENCE CREEK. THE COST FOR MAINTAINING ACCESS ON GRAF ROAD SHALL BE INCLUDED IN THE COST OF TRAFFIC CONTROL AND PROTECTION FOR TEMPORARY DETOUR.
6. THE CONTRACTOR SHALL PROVIDE TEMPORARY ACCESS TO ALL ENTRANCES DURING THE CONSTRUCTION OF GRAF ROAD AND GRAF BRIDGE OVER THE LAWRENCE CREEK. THIS WORK SHALL BE PAID FOR AT THE CONTRACT UNIT PRICE PER EACH FOR TEMPORARY ACCESS (ROAD), TEMPORARY ACCESS (PRIVATE ENTRANCE), TEMPORARY ACCESS (COMMERCIAL ENTRANCE), AND TEMPORARY ACCESS (FIELD ENTRANCE).

SIGN DETAILS



COPYRIGHT © 2011 BY BAXTER & WOODMAN, INC. ...
 STATE OF ILLINOIS - PROFESSIONAL DESIGN FIRM
 LICENSE NO. 184-00171 - EXPIRES 4/30/2011
 1022 P.01
 2/7/2011



DESIGNED - CAC	REVISED - 12/31/10 PER MCDOT
DRAWN - BCD	REVISED - 02/01/11 PER MCDOT
CHECKED - MDW	REVISED - 02/01/11 PER IDOT
DATE - 10/08/10	FILE -

**MCHENRY COUNTY DIVISION OF TRANSPORTATION
GRAF ROAD BRIDGE OVER
LAWRENCE CREEK**

TEMPORARY DETOUR PLAN

SCALE: NONE STA. TO STA.

TR	SECTION	COUNTY	TOTAL SHEETS	SHEET NO.
0037	06-00322-00-BR	MCHENRY	54	13
C-91-358-06		CONTRACT NO. 63569		
FED. ROAD DIST. NO. 1 ILLINOIS FED. AID PROJECT BR05-0001(683)				