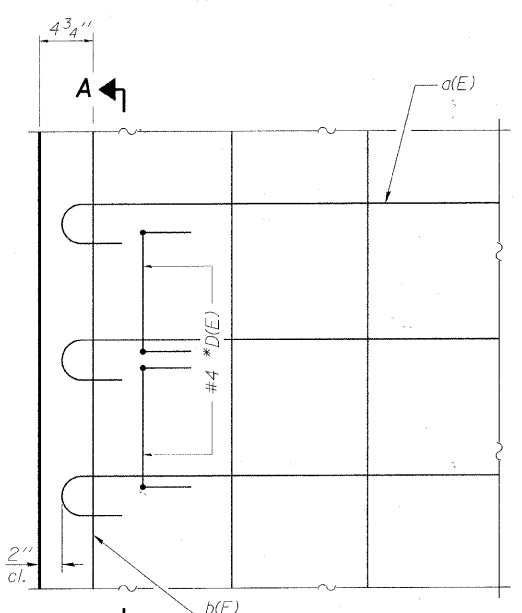
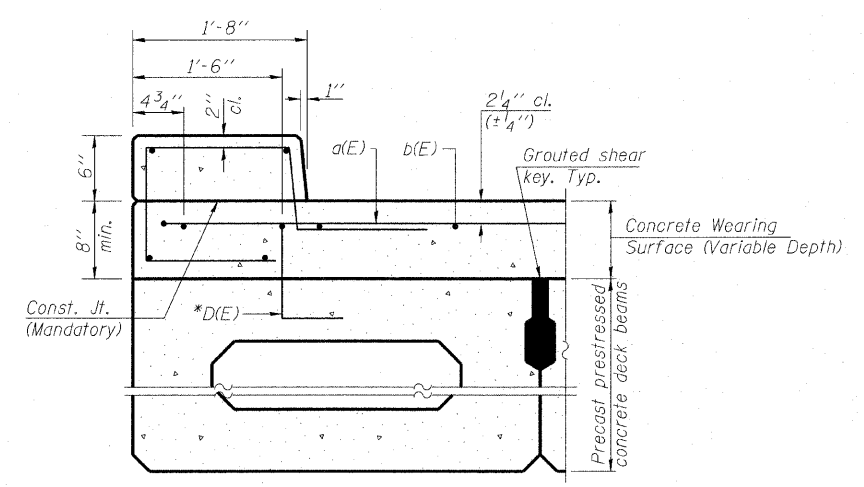


CURB JOINT DETAILS



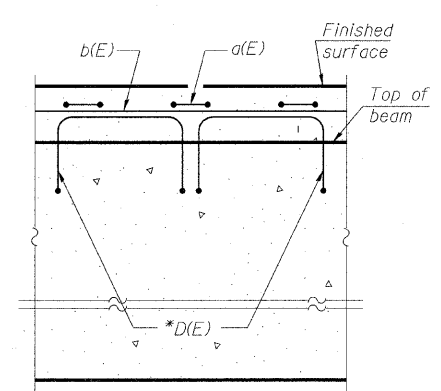
PLAN

Notes:
Formwork necessary for the wearing surface may be secured utilizing the bottom rail anchorage inserts and/or additional inserts cast into the beam.

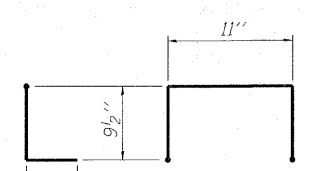


SECTION THRU FASCIA BEAM

Rail Post anchorage not shown

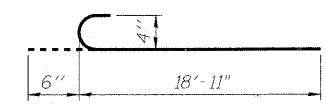


SECTION A-A

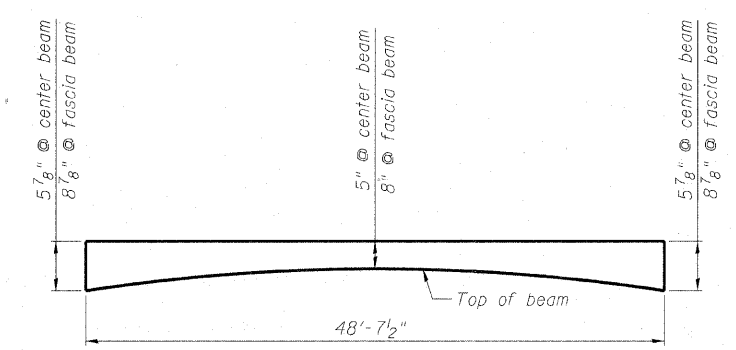


BAR D(E)

* Place 2-#4 D(E) bars in beam at each post location as shown. D(E) bar included in cost of beam.



BAR a(E)



ANTICIPATED CONCRETE WEARING SURFACE PROFILE

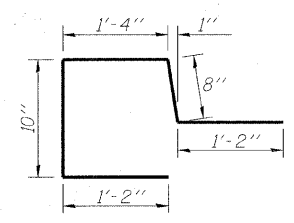
(For information only)

Estimated Final Beam Camber = 7/8"

SUPERSTRUCTURE BILL OF MATERIAL

Bar	No.	Size	Length	Shape
a(E)	196	#4	19'-5"	C
b(E)	120	#4	34'-1"	—
b ₁ (E)	16	#5	25'-10"	—
c(E)	244	#5	5'-2"	C
Reinforcement Bars, Epoxy Coated			Pound	7030
Concrete Wearing Surface (Variable Depth)			Cu. Yd.	73.5
Concrete Superstructure			Cu. Yd.	6.0
Bridge Deck Grooving			Sq. Yd.	332
Protective Coat			Sq. Yd.	400

Bars indicated thus 20 x 2-#4 etc. indicates 20 lines of bars with 2 lengths per line.



BAR c(E)

MINIMUM BAR LAP

#4 bar = 2'-7"
#5 bar = 3'-3"

COPYRIGHT © 2010 BY BAKER & BODDMAN, INC. ...
 LICENSE NO. 384-00023 - EXPIRES 4/30/2011
 2/7/2011 3:26:43 PM

FILE NAME =	USER NAME =	DESIGNED - BLB	REVISED - PER MCDOT 12/31/10	MCHENRY COUNTY DIVISION OF TRANSPORTATION GRAF ROAD BRIDGE OVER LAWRENCE CREEK	SUPERSTRUCTURE DETAILS STRUCTURE NO. 056-3182	TR	SECTION	COUNTY	TOTAL	SHEET
		CHECKED - BAB	REVISED -			0037	06-00322-00-BR	MCHENRY	54	29
		DRAWN - BCD	REVISED -			C-91-358-06		CONTRACT NO. 63569		
		CHECKED - BLB	REVISED -			SHEET NO. 6 OF 19 SHEETS		FED. ROAD DIST. NO. 1 ILLINOIS FED. AID PROJECT		BROS-001(683)