

PROJECT ENGINEER - REBECCA MARRUFFO

SQUAD LEADER - BRAD CUSHMAN (815)284-5996

F.A.U. RTE.	SECTION	COUNTY	TOTAL SHEETS	SHEET NO.
5857	1R-T	Rock Island	25	1
FED. ROAD DIST. NO.	ILLINOIS	CONTRACT NO. 64E31		

INDEX

- 1 COVER SHEET
- 2-3 SUMMARY OF QUANTITIES
- 4-5 GENERAL NOTES
- 6 TYPICAL SECTIONS
- 7-8 SCHEDULE OF QUANTITIES
- 9-10 HORIZONTAL & VERTICAL CONTROL
- 11 PLAN & PROFILE
- 12-16 GABION WALL DETAIL
- 17 BORING LOGS
- 18 DETOUR ROUTE DETAIL
- 19 CURB AND GUTTER OUTLET, SPECIAL (18.4)
- DELINEATOR AND POST ORIENTATION (37.4)
- 20 WITNESS MARKER & PERMANENT SURVEY MARKERS, TYPE II (66.2)
- NAME PLATE FOR CULVERTS (88.2)
- 21 ENTRANCE APPROACHES - URBAN AREA (25.1)
- 22 TRAFFIC CONTROL FOR ROAD CLOSURE (40.1)
- 23 DETAILS OF PLANTING AND BRACING TREES (92.1)
- 24-25 CROSS SECTIONS

STATE STANDARDS

- 280001-05 TEMPORARY EROSION CONTROL SYSTEMS
- 420001-07 PAVEMENT JOINTS
- 442201-03 CLASS C AND D PATCHES
- 606001-04 CONCRETE CURB TYPE B AND COMBINATION CONCRETE CURB AND GUTTER DELINEATORS
- 635001-01 DELINEATORS
- 701006-03 TYPICAL APPLICATION OF TRAFFIC CONTROL STANDARD
- 701301-04 TYPICAL APPLICATION OF TRAFFIC CONTROL STANDARD
- 701501-06 TYPICAL APPLICATION OF TRAFFIC CONTROL STANDARD
- 701311-03 TYPICAL APPLICATION OF TRAFFIC CONTROL STANDARD
- 701901-01 TRAFFIC CONTROL DEVICES
- 720011-01 METAL POST FOR SIGNS, MARKERS AND DELINEATORS
- 728001-01 TELESCOPING STEEL SIGN SUPPORT
- 729001-01 APPLICATIONS OF TYPES A & B METAL POSTS (FOR SIGNS & MARKERS)
- 780001-02 TYPICAL PAVEMENT MARKINGS

STATE OF ILLINOIS

DEPARTMENT OF TRANSPORTATION

DIVISION OF HIGHWAYS

PROPOSED HIGHWAY PLANS

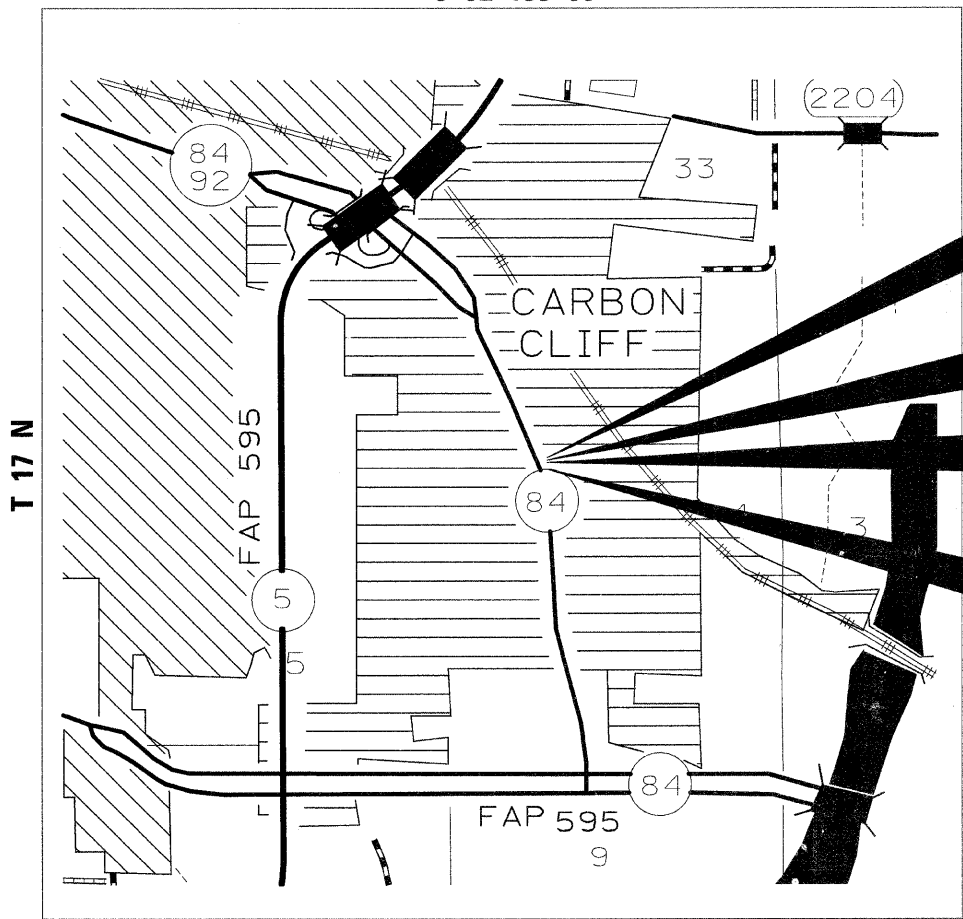
FAU ROUTE 5857 (IL 84)
SECTION 1R-T
PROJECT M - 5857(001)

ROCK ISLAND COUNTY

D-92-084-08



C-92-188-09

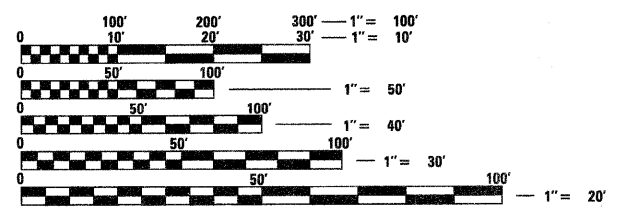


IMPROVEMENT BEGINS
STA. 67 + 77

SECTION BEGINS
STA. 68 + 74

SECTION ENDS
STA. 69 + 27

IMPROVEMENT ENDS
STA. 70 + 00



FULL SIZE PLANS HAVE BEEN PREPARED USING STANDARD ENGINEERING SCALES. REDUCED SIZED PLANS WILL NOT CONFORM TO STANDARD SCALES. IN MAKING MEASUREMENTS ON REDUCED PLANS, THE ABOVE SCALES MAY BE USED.

J.U.L.I.E.
 JOINT UTILITY LOCATION INFORMATION FOR EXCAVATION
 1-800-892-0123
 OR 811

HAMPTON TOWNSHIP, SECTION 4

GROSS LENGTH = 53 FT. = 0.01 MILE
 NET LENGTH = 53 FT. = 0.01 MILE

CONTRACT NO. 64E31

ROCK ISLAND COUNTY SECTION 1R-T FAU ROUTE 5857

STATE OF ILLINOIS
 DEPARTMENT OF TRANSPORTATION
 DIVISION OF HIGHWAYS

SUBMITTED Oct 8 2010

George F. Ryan
 DEPUTY DIRECTOR OF HIGHWAYS, REGION ENGINEER

December 10 2010
Scott E. Stitt, P.E.
 acting ENGINEER OF DESIGN AND ENVIRONMENT

December 10 2010
Christine M. Reed
 DIRECTOR OF HIGHWAYS, CHIEF ENGINEER

**PRINTED BY THE AUTHORITY
 OF THE STATE OF ILLINOIS**