
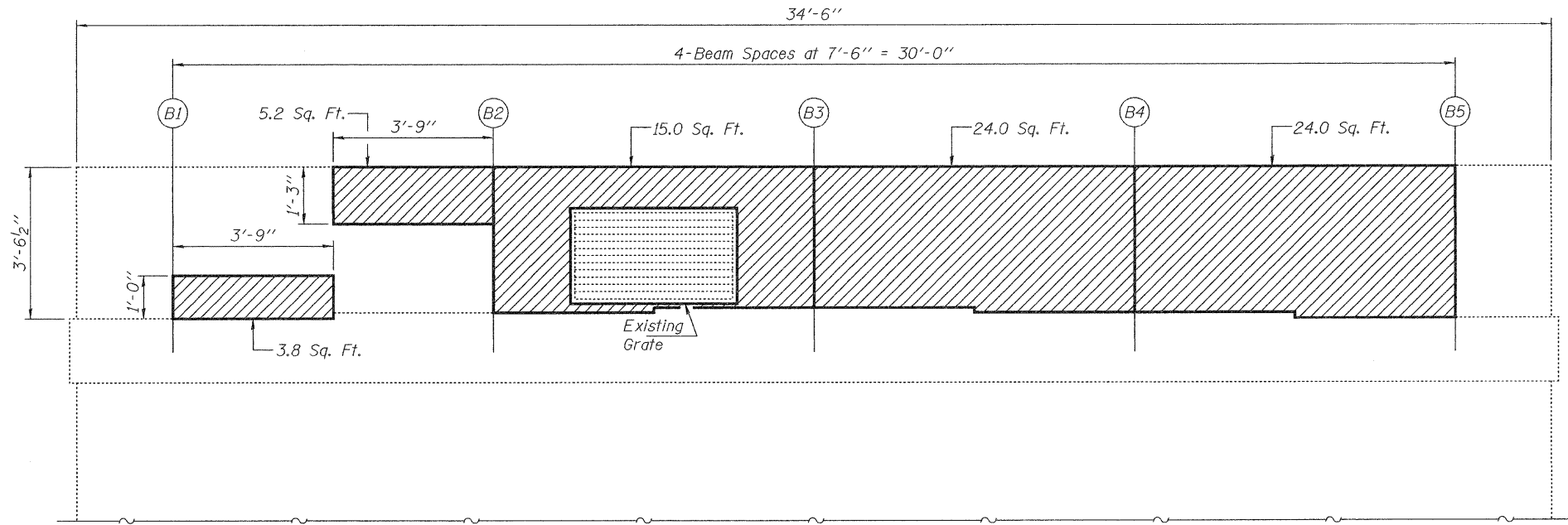


BACKWALL REPAIRS - NORTH ABUTMENT SN: 101-0031 (S.B.)
(Looking North)

 - Structural Repair of Concrete ≤ 5 inches



BACKWALL REPAIRS - SOUTH ABUTMENT SN: 101-0031 (S.B.)
(Looking South)

DESIGNED - IJL	EXAMINED - <i>Joanne F. Jelliffe</i>	DATE - MARCH 11, 2011	STATE OF ILLINOIS DEPARTMENT OF TRANSPORTATION	ABUTMENT BACKWALL REPAIR DETAILS SN 101-0031 (S.B.)		F.A.P. RTE. 738	SECTION (5HB)M1	COUNTY WINNEBAGO	TOTAL SHEETS 9	SHEET NO. 6
CHECKED - GGE	PASSED - <i>Carl Perry</i>			SHEET NO. 2 OF 5 SHEETS	CONTRACT NO. 64G89		ILLINOIS FED. AID PROJECT			
DRAWN - Kyle M. Steffen	ACTING ENGINEER OF STRUCTURAL SERVICES									
CHECKED - IJL GGE	ACTING ENGINEER OF BRIDGES AND STRUCTURES									