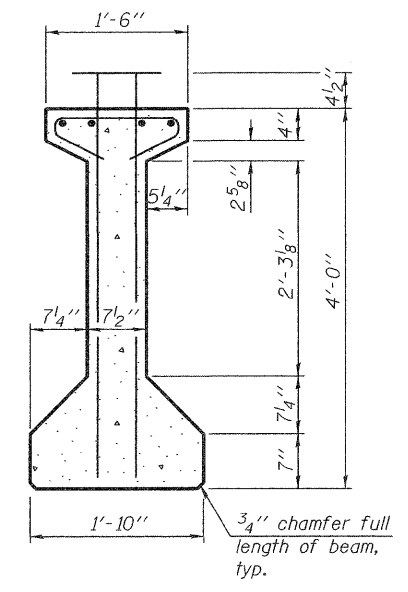
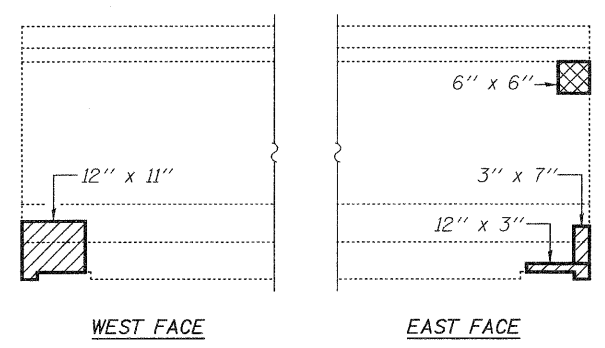
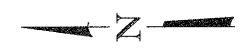


**FRAMING PLAN - SN: 101-0032 (N.B.)**

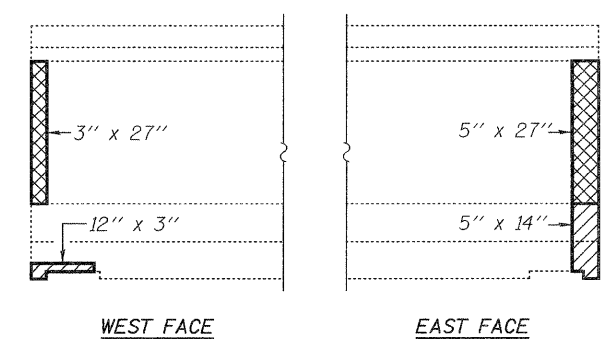


**BEAM DIMENSIONS**  
FOR INFORMATION ONLY

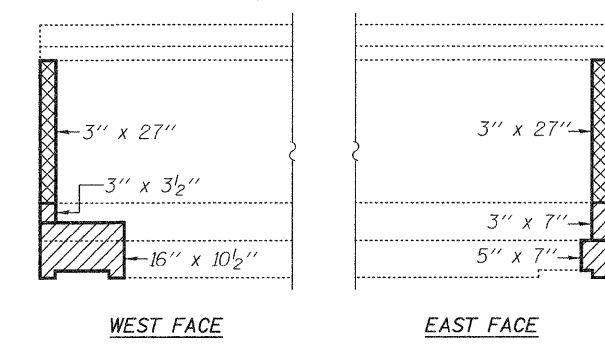
- Polymer Modified Portland Cement Mortar
- Structural Repair of Concrete ≤ 5 inches



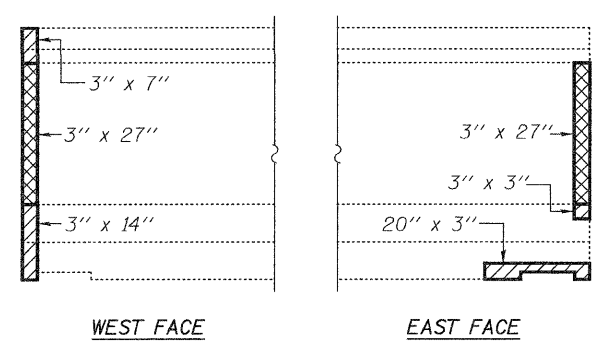
**BEAM 1 - N. ABUT.**



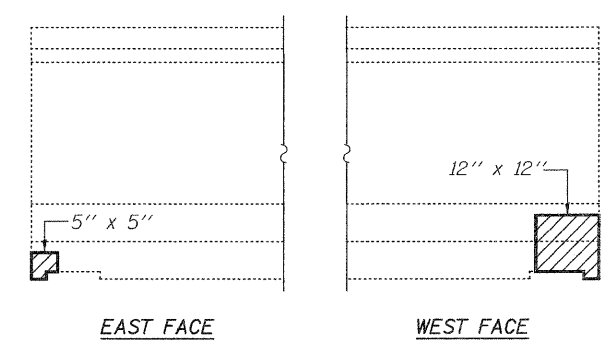
**BEAM 3 - N. ABUT.**



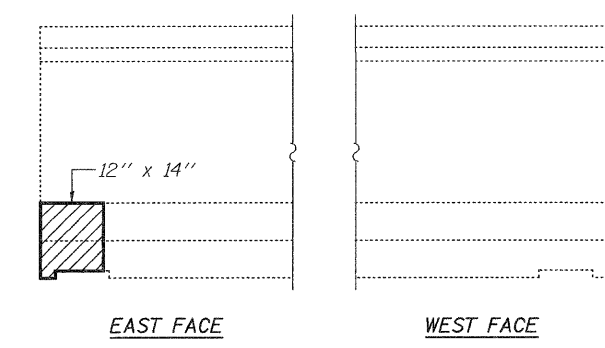
**BEAM 4 - N. ABUT.**



**BEAM 5 - N. ABUT.**



**BEAM 1 - S. ABUT.**



**BEAM 5 - S. ABUT.**

DESIGNED - IJL	EXAMINED - <i>Jayne F. Jelliffe</i> ACTING ENGINEER OF STRUCTURAL SERVICES	DATE - MARCH 11, 2011	<b>STATE OF ILLINOIS</b> <b>DEPARTMENT OF TRANSPORTATION</b>	<b>P.P.C. I-BEAM END REPAIR DETAILS</b> <b>SN 101-0032 (N.B.)</b>	F.A.P. RTE. 738	SECTION (5HB)M1	COUNTY WINNEBAGO	TOTAL SHEETS 9	SHEET NO. 9
CHECKED - GGE	PASSED - <i>Carl King</i> ACTING ENGINEER OF BRIDGES AND STRUCTURES								
DRAWN - Kyle M. Steffen									
CHECKED - IJL GGE									
				SHEET NO. 5 OF 5 SHEETS	ILLINOIS FED. AID PROJECT CONTRACT NO. 64G89				