

F.A.P. RTE.	SECTION	COUNTY	TOTAL SHEETS	SHEET NO.
642	(10BR-3)M	JODAVIESS	12	1
		ILLINOIS	CONTRACT NO. 64G90	

* 12 + 1 = 13

STATE OF ILLINOIS
DEPARTMENT OF TRANSPORTATION
DIVISION OF HIGHWAYS

**PROPOSED
HIGHWAY PLANS**

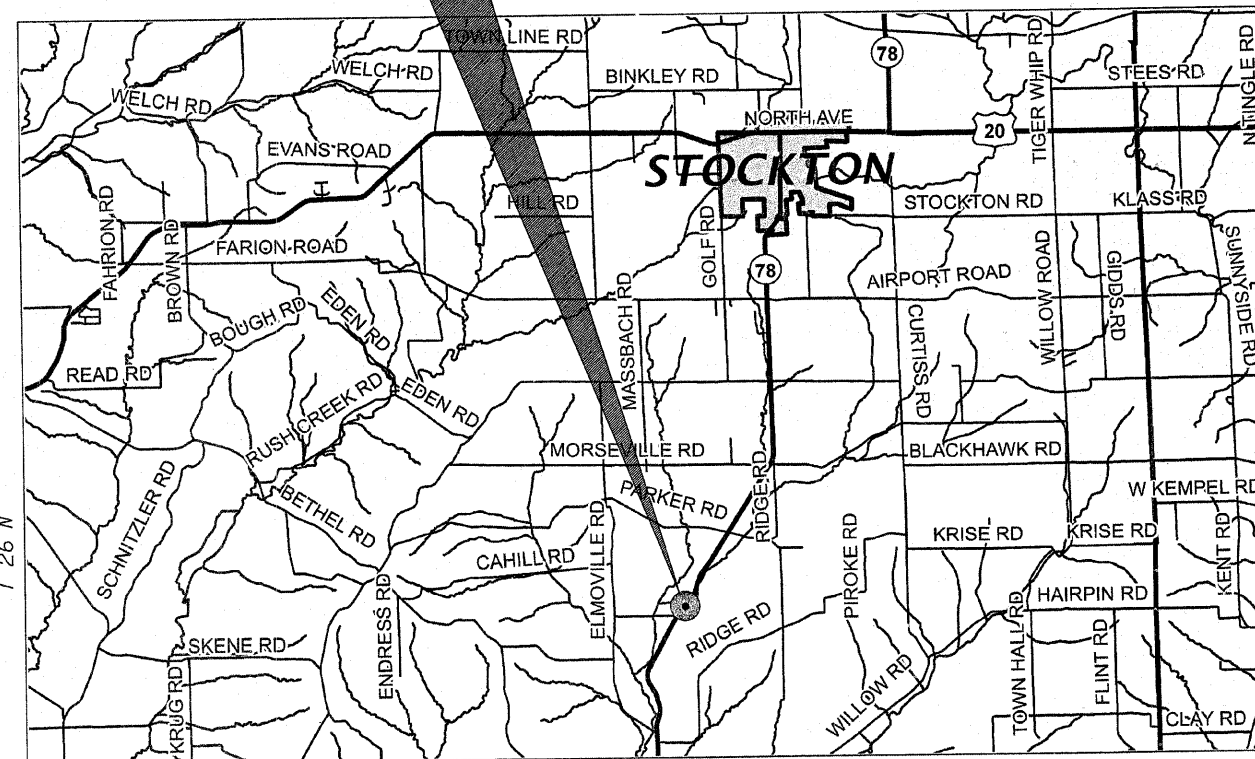
FAP ROUTE 642 (IL 78)
SECTION (10BR-3)M

BRIDGE REPAIRS
JODAVIESS COUNTY

C-92-073-11

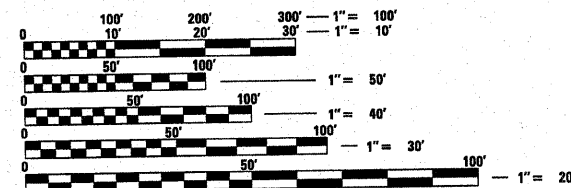
FOR INDEX OF SHEETS, SEE SHEET NO. 2

Project Location
Structure No. 043-0040



T 26 N

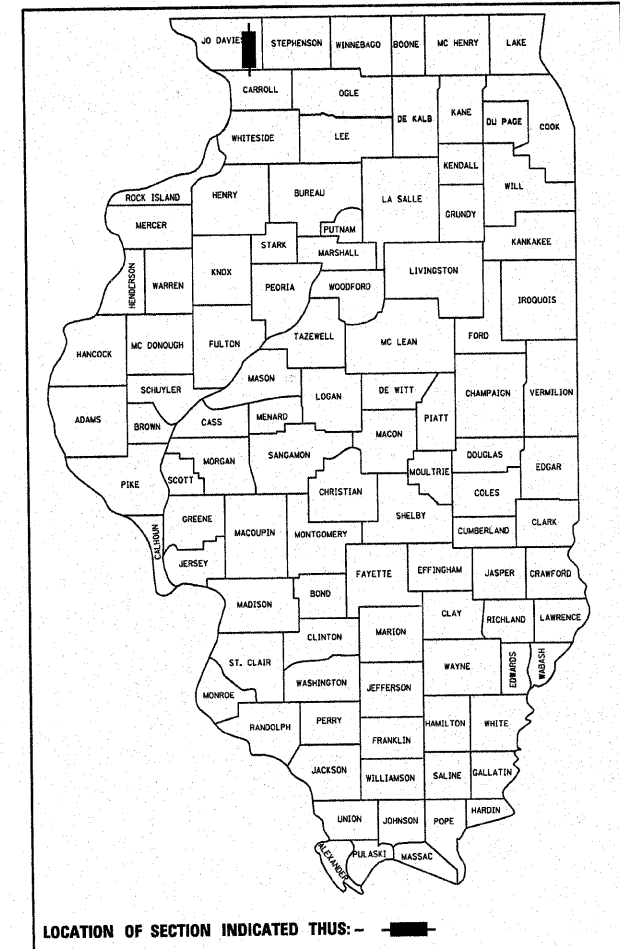
R 4 E



FULL SIZE PLANS HAVE BEEN PREPARED USING STANDARD ENGINEERING SCALES. REDUCED SIZED PLANS WILL NOT CONFORM TO STANDARD SCALES. IN MAKING MEASUREMENTS ON REDUCED PLANS, THE ABOVE SCALES MAY BE USED.

J.U.L.E.
JOINT UTILITY LOCATION INFORMATION FOR EXCAVATION
1-800-892-0123
OR 811

BRIDGE MAINTENANCE ENGINEER: Mahmoud Etemadi 815/284-5393
PLAN TECHNICIAN: Dan Link 815/284-5416
TOWNSHIPS: Pleasant
CONTRACT NO. 64G90



LOCATION OF SECTION INDICATED THIS: - [black rectangle] -

STATE OF ILLINOIS
DEPARTMENT OF TRANSPORTATION
DIVISION OF HIGHWAYS

SUBMITTED January 27 2011
Eric S. Theibildhan
DEPUTY DIRECTOR OF HIGHWAYS, REGION ENGINEER

March 25 2011
Scott E. Stett P.E. Ia
Acting ENGINEER OF DESIGN AND ENVIRONMENT

March 25 2011
Christine M. Reed Ia
DIRECTOR OF HIGHWAYS, CHIEF ENGINEER

**PRINTED BY THE AUTHORITY
OF THE STATE OF ILLINOIS**

INDEX OF SHEETS

1. Cover Sheet
2. Index of Sheets, Standards, General Notes
3. Summary of Quantities
4. Traffic Control Plan Stage I
5. Traffic Control Plan Stage II
6. 'To Activate Signal' Sign Detail

Bridge Plans

7. General Plan & Elevation
8. 33" x 36" PPC Deck Beam
9. 33" x 36" PPC Deck Beam Details
10. Repair Details
11. Repair Details
- 11A. Traffic Barrier Terminal Details
12. Right-of-Way Plat

STANDARDS

- 701006-03 Off-Road Operations, 2L, 2W, 15 5/32 (4.5 m) to 24" (600 mm) From Pavement Edge
 701301-04 Lane Closure, 2L, 2W, Short Time Operations
 701311-03 Lane Closure, 2L, 2W, Moving Operations - Day Only
 701321-11 Lane Closure, 2L, 2W, Bridge Repair with Barrier
 701901-01 Traffic Control Devices
 704001-06 Temporary Concrete Barrier
 720011-01 Metal Posts for Signs, Markers and Delineators
 728001-01 Telescoping Steel Sign Support
 729001-01 Applications of Types A and B Metal Posts (For Signs & Markers)

GENERAL NOTES

The final top four inches of soil in any right-of-way area disturbed by the Contractor must be capable of supporting vegetation. The soil must be from the A horizon (zero to 2' deep) of soil profiles of local soils.

All Borrow/Waste/Use sites must be approved by the Department prior to removing any material from the project or initiating any earthmoving activities, including temporary stockpiling outside the limits of construction.

The Contractor shall seed all disturbed areas within the project limits. Seeding Class 4 or 2A shall be used, except in front of properties where the grass will be mowed, then use Seeding, Class 1. Class 2A shall be used on front slopes and ditch bottoms. Class 4 shall be used behind Type A gutter, on all backslopes and areas behind the backslope, and beyond the toe of front slope on fill sections without ditches. This work will be included in the contract unit price per Cubic Yard for CONCRETE REMOVAL.

Fertilizer shall be applied to all disturbed areas and incorporated into the seedbed prior to seeding or placement of sod at the rate specified in Sections 250 and 252 of the Standard Specifications. This work shall be included in the cost of CONCRETE REMOVAL.

Mulch Method II shall be applied over all seeded areas. This shall be included in the cost of the CONCRETE REMOVAL.

At bridge expansion joints, if temporary expansion joint bulkheads are attached to adjacent deck slabs or abutments for support, the Contractor shall cut the attachments as soon as the concrete has set to prevent joint damage due to horizontal contraction or expansion.

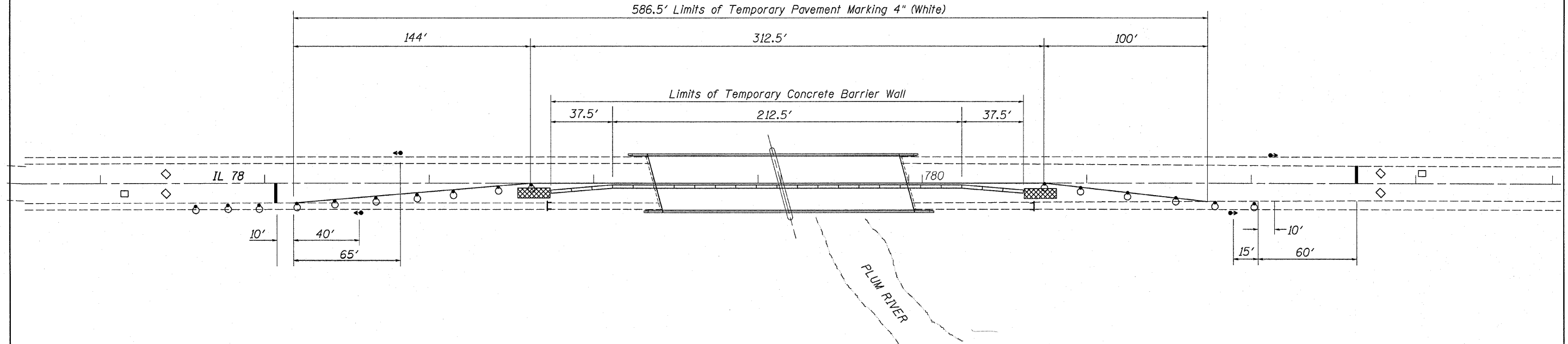
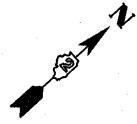
The Contractor shall be responsible for protecting utility property during construction operations as outlined in Article 107.31 of the Standard Specifications. A minimum of 48 hours advance notice is required for non-emergency work. The JULIE number is 800-892-0123.

FILE NAME =	USER NAME = linkdj	DESIGNED -	REVIS	STATE OF ILLINOIS DEPARTMENT OF TRANSPORTATION	General Notes, Index of Sheets Standards	F.A.P. RTE.	SECTION	COUNTY	TOTAL SHEETS	SHEET NO.	
D:\BR\CADD plans\Jo Daviess County\043004\PLANeng.dgn	DRAWN -	REVIS	642			(10BR-3M)	JODAVIESS	12	2		
PLOT SCALE = 50.0000' / IN.	CHECKED -	REVIS	CONTRACT NO. 64C90								
PLOT DATE = Sat Jan 22 08:46:56 2011	DATE -	REVIS	[ILLINOIS] FED. AID PROJECT								
						SCALE: _____	SHEET NO. ___ OF ___ SHEETS	STA. _____ TO STA. _____			

Rev.

TRAFFIC CONTROL PLAN STAGE I

Refer to Standard 701321 for additional signs, details & devices



Temporary Pavement Marking Line 4"	
Stage I Edgeline	144
	312.5
Stage II Edgeline	100
	144
	312.5
	100
Total	1,113 Feet

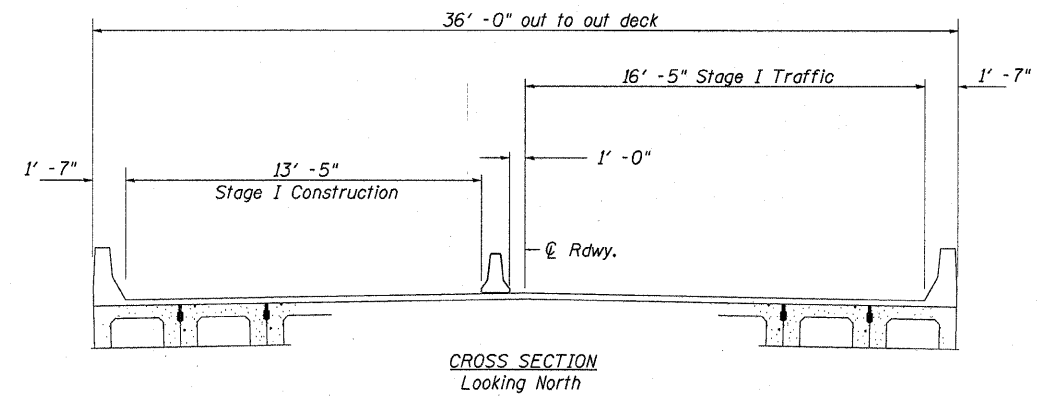
Temporary Rumble Strips	
North	3
South	3
Total	6 Each

Temporary Impact Attenuator	
Stage I	2
Total	2 Each

Temporary Concrete Barrier	
Stage I North Taper	37.5
Stage I Bridge Tangent	212.5
Stage I South Taper	37.5
Total	287.5 Feet

Temporary Bridge Traffic Signals	
Stage I & II	1
Total	1 Each

Temporary Pavement Marking Line 24"	
Stop Bars	24
IL 78 NB	12
IL 78 SB	12
Total	24 Feet



FILE NAME =	USER NAME = linkdj	DESIGNED -	REVISD -
D:\BR\CADD\plans\Jo Daviess County\0430	40\PLANeng.dgn	DRAWN -	REVISD -
	PLOT SCALE = 30.0000' / IN.	CHECKED -	REVISD -
	PLOT DATE = Sat Jan 22 09:46:42 2011	DATE -	REVISD -

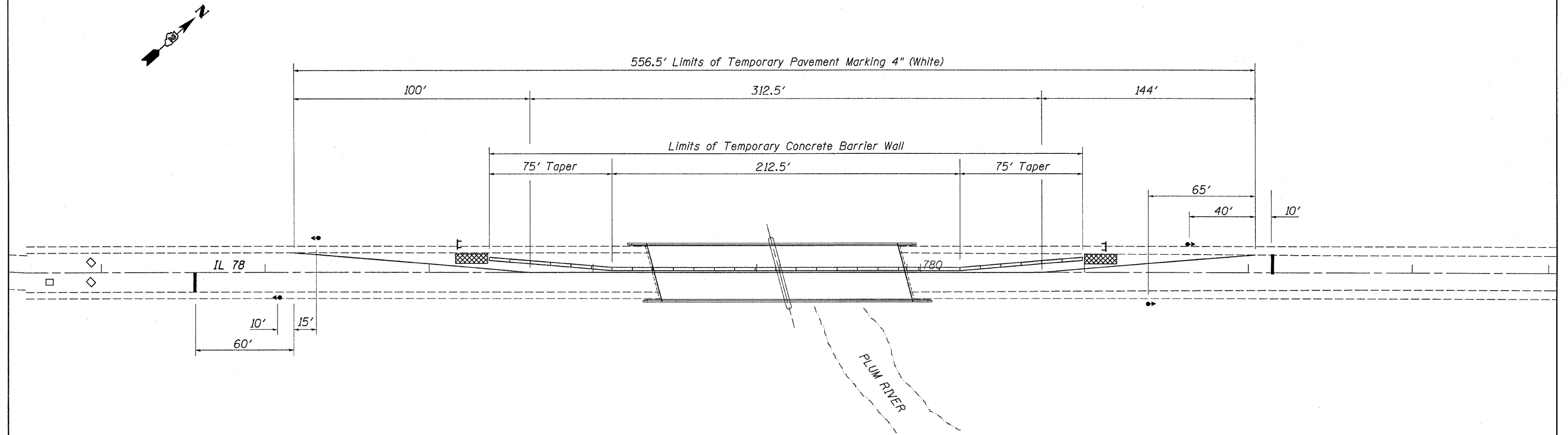
STATE OF ILLINOIS
DEPARTMENT OF TRANSPORTATION

Traffic Control Plan	
Structure No. 043-0040	
SCALE: _____	SHEET NO. ___ OF ___ SHEETS
STA. _____ TO STA. _____	

F.A.P. RTE.	SECTION	COUNTY	TOTAL SHEETS	SHEET NO.
642	(10BR-3)M	JODAVIESS	12	4
CONTRACT NO. 64C90			ILLINOIS FED. AID PROJECT	

TRAFFIC CONTROL PLAN STAGE II

Refer to Standard 701321 for additional signs, details & devices



Relocate Temporary Concrete Barrier

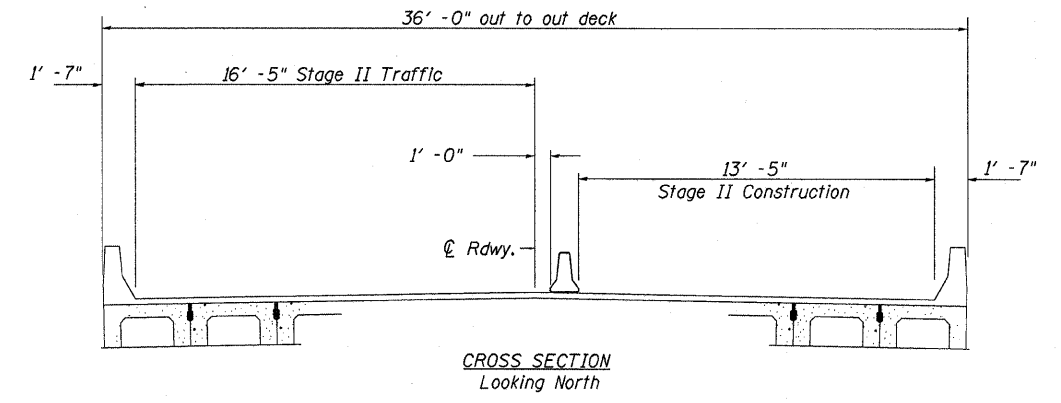
Stage I	Feet
North Taper	37.5
Bridge Tangent	212.5
South Taper	37.5
Total 287.5 Feet	

Relocate Temporary Impact Attenuator

Stage I	Each
North	1
South	1
Total 2 Each	

Workzone Pavement Marking Removal

Stage I	Sq Ft
Stage I	186
Stage II	186
Stop Bars	48
Total 420 Sq Ft	



FILE NAME =	USER NAME = linkdj	DESIGNED -	REVISED -	STATE OF ILLINOIS DEPARTMENT OF TRANSPORTATION	Traffic Control Plan Structure No. 043-0040	F.A.P. RTE.	SECTION	COUNTY	TOTAL SHEETS	SHEET NO.
D:\BR\CADD\plans\Jo Daviess County\043004\043004.dgn	40\PLANeng.dgn	DRAWN -	REVISED -			642	(10BR-3)M	JODAVIESS	12	5
PLOT SCALE = 30.0000' / IN.	CHECKED -	REVISED -	REVISED -			CONTRACT NO. 64C90				
PLOT DATE = Sat Jan 22 08:46:36 2011	DATE -	REVISED -	REVISED -			ILLINOIS FED. AID PROJECT				

STOP LINE SIGN FOR TEMPORARY SIGNALS



SIZE: 600(24) x 600(24)
 100(4) CAPITAL LETTERS - BLACK
 13 (1/2) BORDER - BLACK
 WHITE REFLECTIVE - TYPE AP
 HIGH INTENSITY PRISMATIC SHEETING

GENERAL NOTE:

THIS SIGN SHALL BE INSTALLED AT THE
 STOP LINE AS DIRECTED BY ENGINEER.

ALL DIMENSIONS ARE IN MILLIMETERS (INCHES)
 UNLESS OTHERWISE NOTED.

REVISED - 1-22-07

REVISED - ---	REGION 2 / DISTRICT 2 STANDARD	F.A.P. RTE.	SECTION	COUNTY	TOTAL SHEETS	SHEET NO.
REVISED - ---		642	(10BR-3)M	JODAVIESS	12	6
REVISED - ---		CONTRACT NO. 64C90				
REVISED - ---		FED. ROAD DIST. NO. _ [ILLINOIS] FED. AID PROJECT				
REVISED - ---		SCALE: 50:2000 (1"=20')	SHEET NO. _ OF _ SHEETS		STA. _ TO STA. _	

GENERAL NOTES

All structural steel shall conform to AASHTO Classification M-270 Gr. 36, unless otherwise noted.

Plan dimensions and details relative to existing plans are subject to nominal construction variations. The Contractor shall field verify existing dimensions and details affecting new construction and make necessary approved adjustments prior to construction or ordering of materials. Such variations shall not be cause for additional compensation for a change in scope of the work, however, the Contractor will be paid for the quantity actually furnished at the unit price bid for the work.

The contractor is advised that the existing PPC Deck Beams are in a deteriorated condition with reduced load carrying capacity. It is the contractors responsibility to account for the condition of the beams when developing construction procedures.

If the contractor's procedure for existing beam removal or placement of new beams involves placement of cranes or other heavy equipment on the bridge, a detailed procedure shall be submitted to the Engineer for approval. The procedure shall include calculations, prepared and sealed by an Illinois Licensed Structural Engineer, verifying that the equipment and procedure used will not overstress the new or existing beams. To distribute load to multiple beams and protect the existing surface, in all cases a double layer mat of heavy timbers shall be used at all times under crane tracks or wheels and any outriggers in the down position. If necessary, shims shall be used under the crane mat to ensure uniform contact with the underlying beams. If heavy equipment will be placed on new PPC deck beams, the following shall be done prior to placement of the timber mats: placement and tightening of transverse tie assemblies, grouting and curing the dowel rods 24 hours minimum and grouting and curing the shear keys.

Any damage done to the bridge during beam removal shall be repaired by the Contractor. Cost to be included in the cost of Removal of Existing PPC Deck Beams.

The top surface of the beams shall be finished according to the IDOT Manual for Fabrication of Precast Prestressed Concrete Products.

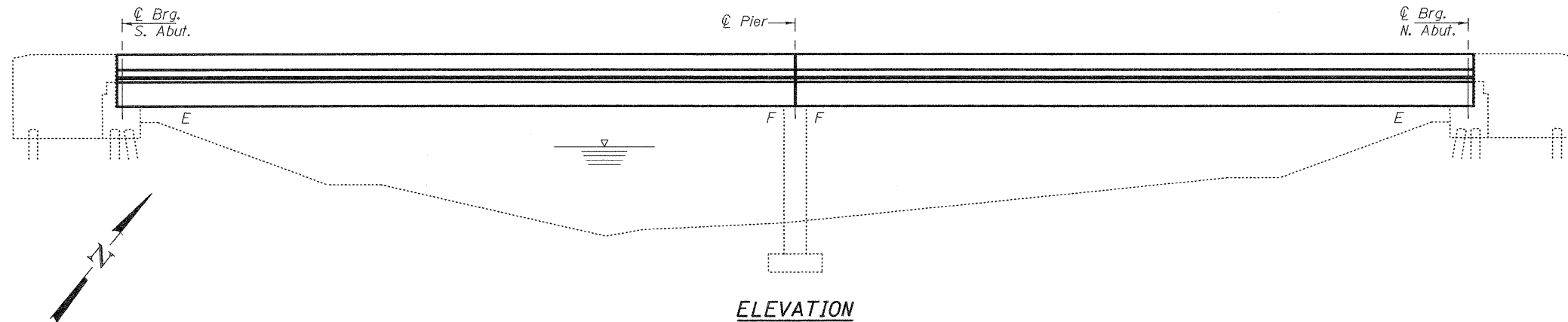
Temporary concrete barrier shall only be anchored into the overlay and not into the PPC Deck Beams.

All structural steel shall be shop painted with the inorganic zinc rich primer per AASHTO M300, Type 1. Cost included with PPC Deck Beams.

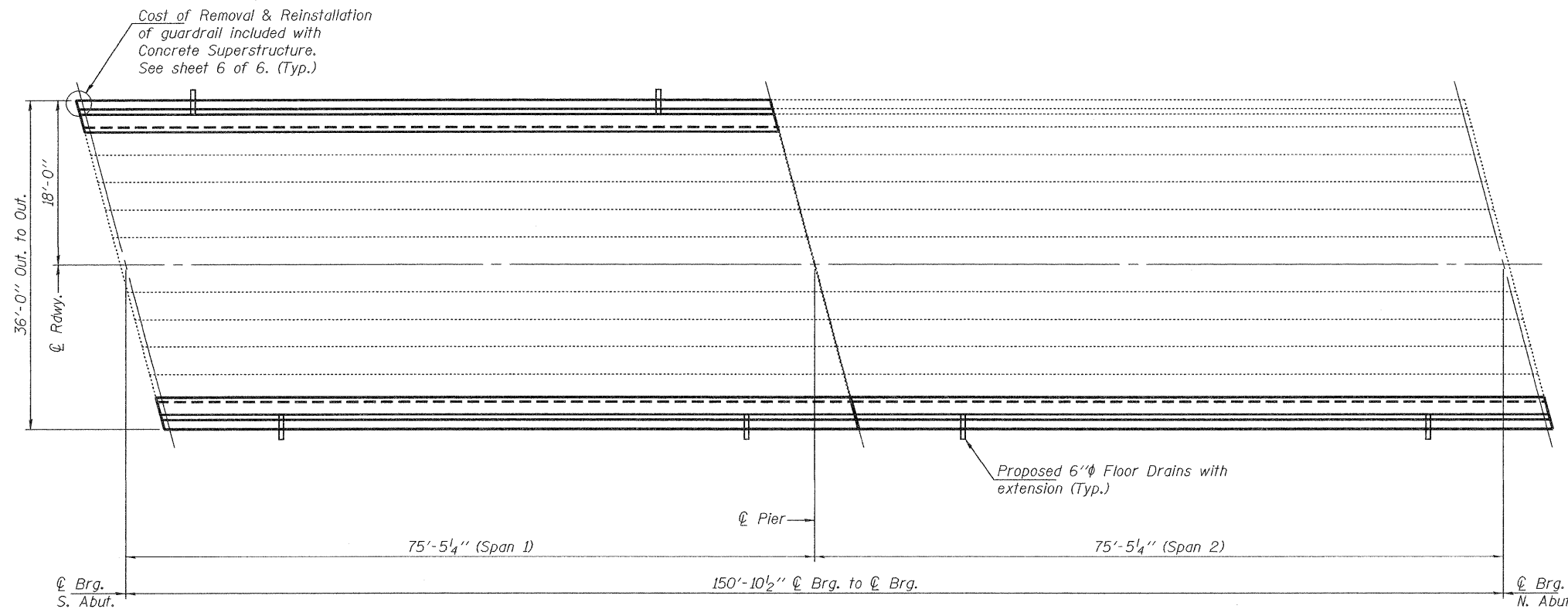
Reinforcement bars designated (E) shall be epoxy coated.

Reinforcement bars shall conform to the requirements of ASTM A 706 Gr 60. See Special Provisions.

Existing reinforcement bars extending into the removal area shall be cleaned, straightened and incorporated into the new construction. Any reinforcement bars that are damaged during concrete removal shall be replaced with an approved bar splicer or anchorage system. Cost included with Concrete Removal.

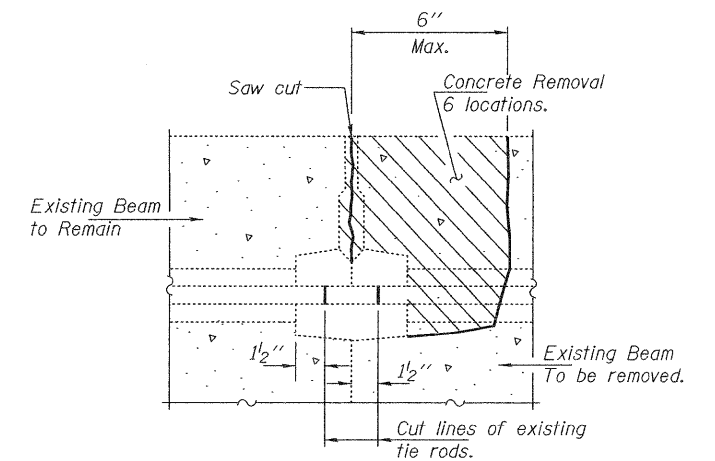


ELEVATION



PLAN

Remove & Replace Fascia P.P.C. Deck Beams
(Spans 1 & 2 at E. Fascia, Span 1 at W. Fascia)



BEAM REMOVAL DETAIL AT TRANSVERSE TIES

TOTAL BILL OF MATERIAL

ITEM	UNIT	QUANTITY
Removal of Existing PPC Deck Beams	Sq. Ft.	684
Precast Prestressed Concrete Deck Beams (33" Depth)	Sq. Ft.	684
Reinforcement Bars Epoxy Coated	Pound	3,880
Asbestos Bearing Pad Removal	Each	3
Concrete Removal	Cu. Yd.	30.2
Concrete Superstructure	Cu. Yd.	30.2
Floor Drains	Each	6

DESIGN STRESSES

PRECAST PRESTRESSED UNITS

$f'c = 6,000$ psi
 $f'ci = 5,000$ psi
 $f's = 270,000$ psi ($1/2"$ low lax strands)
 $f'si = 201,960$ psi ($1/2"$ low lax strands)
 $f_y = 60,000$ psi (Reinforcement)



EXPIRES 11-30-2012

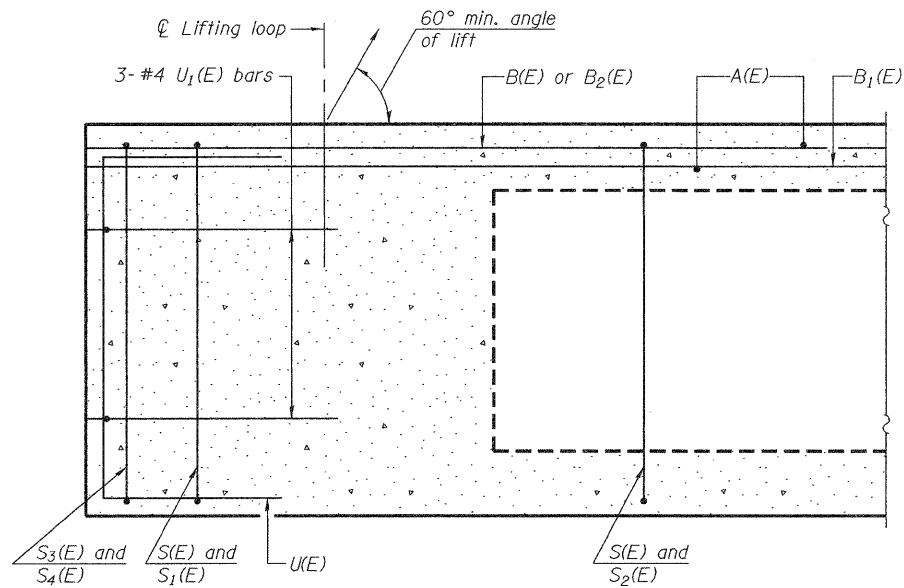
DESIGNED <i>[Signature]</i>	EXAMINED <i>[Signature]</i> ACTING ENGINEER OF STRUCTURAL SERVICES	DATE MARCH 11, 2011
CHECKED <i>[Signature]</i>	PASSED <i>[Signature]</i> ACTING ENGINEER OF BRIDGES AND STRUCTURES	
DRAWN Kyle M. Steffen		
CHECKED J.L.		

STATE OF ILLINOIS
DEPARTMENT OF TRANSPORTATION

GENERAL PLAN & ELEVATION
SN 043-0040

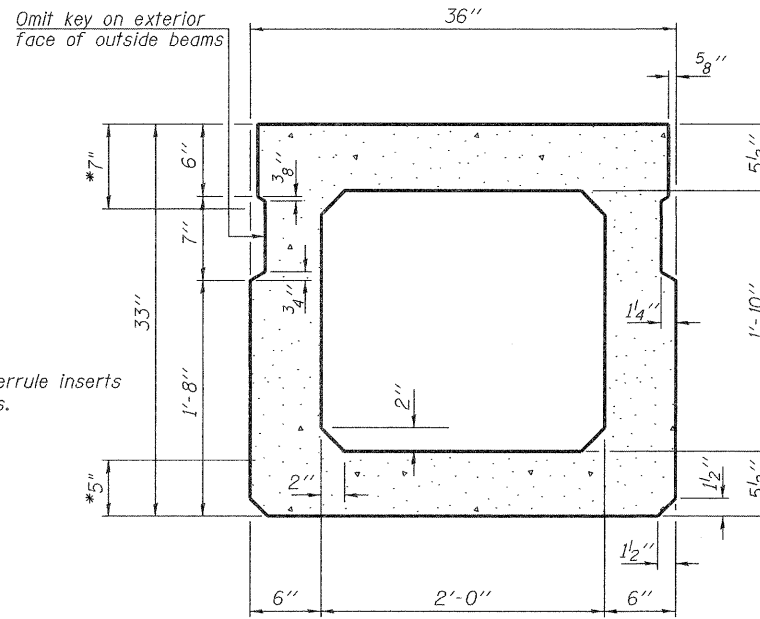
SHEET NO. 1 OF 6 SHEETS

F.A.P. RTE. 642	SECTION 110BR-3M	COUNTY JO DAVIESS	TOTAL SHEETS 12	SHEET NO. 7
CONTRACT NO. 64E90			ILLINOIS FED. AID PROJECT	

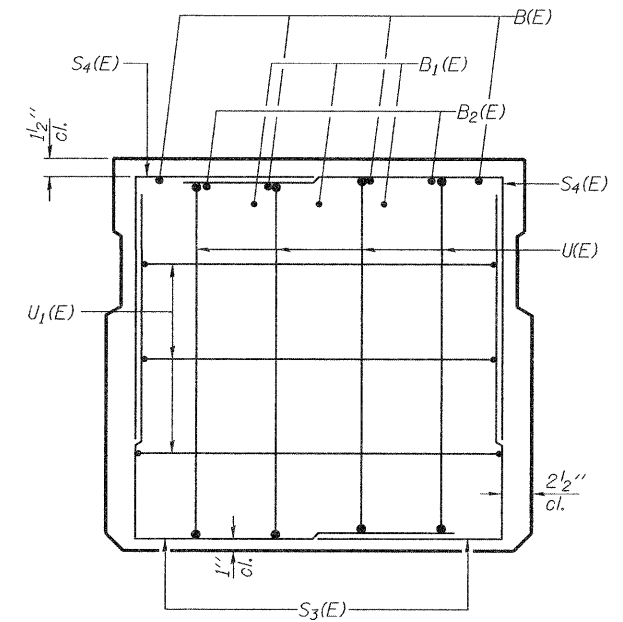


SECTION A-A

* Loop Ferrule inserts for 1/2" bolts.

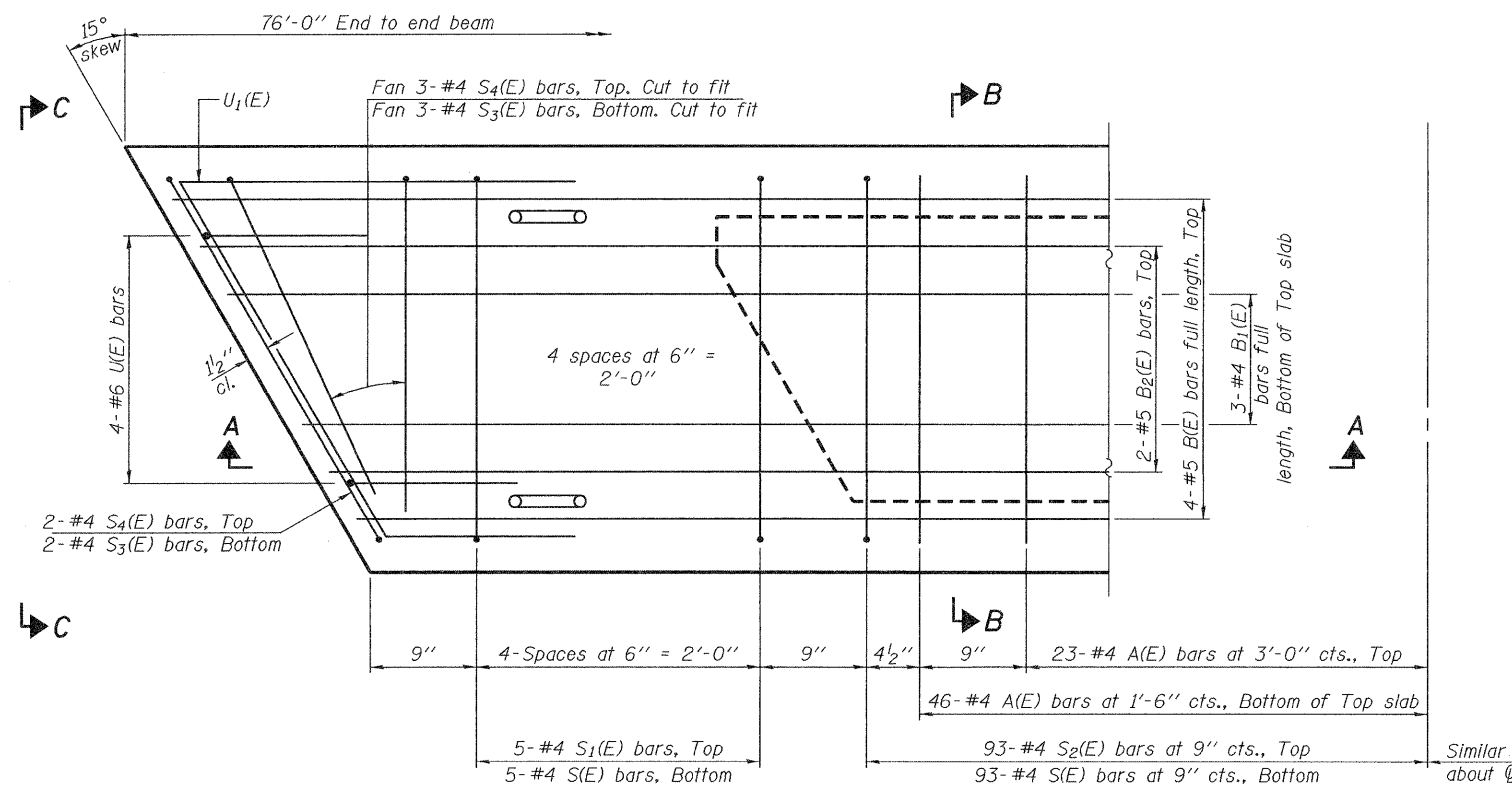


SECTION B-B
(Showing dimensions)



VIEW C-C

D(E) bar not shown for clarity. See detail this sheet.

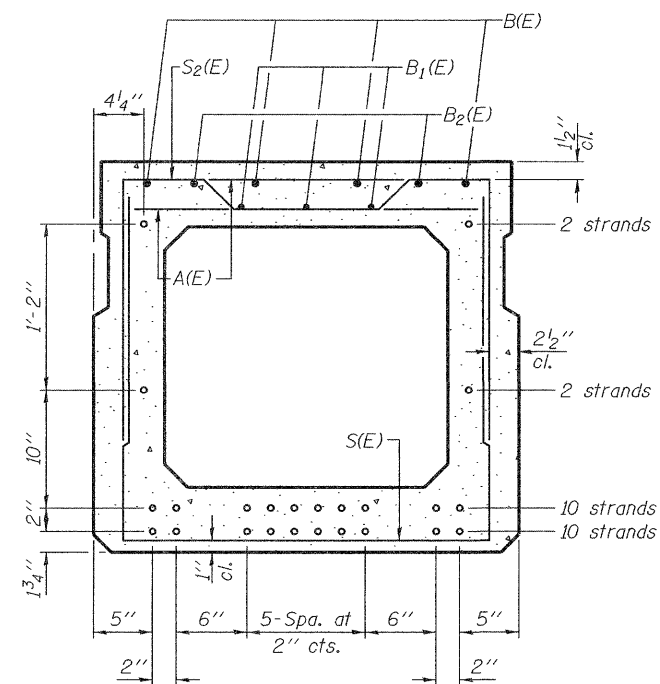


PLAN VIEW

Note: Spacing of S(E) and S2(E) bars may be adjusted up to 4" in the immediate area of the transverse tie diaphragms to miss the block outs for the transverse ties.

MINIMUM BAR LAP

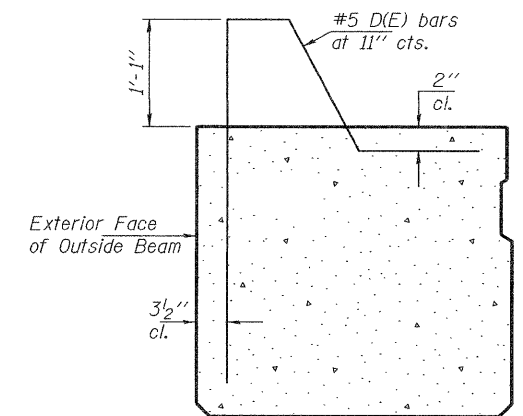
#4 bar = 2'-0"
#5 bar = 2'-6"



SECTION B-B

(Showing reinforcement and permissible strand locations)

Note: Place the number of strands specified in each row symmetrically about the centerline of beam in the permissible strand locations shown.



D(E) BAR DETAILS

BAR LIST
ONE BEAM ONLY

(For information only)

Bar	No.	Size	Length	Shape
A(E)	69	#4	2'-7"	—
B(E)	4	#5	75'-9"	—
B1(E)	3	#4	75'-9"	—
B2(E)	2	#5	10'-0"	—
D(E)	82	#5	6'-11"	┌
S(E)	103	#4	7'-5"	┌
S1(E)	10	#4	6'-3"	┌
S2(E)	93	#4	6'-6"	┌
S3(E)	10	#4	5'-0"	┌
S4(E)	10	#4	4'-5"	┌
U(E)	8	#6	5'-0"	┌
U1(E)	6	#4	5'-9"	┌

Note: See sheet 3 of 6 for additional details and Bill of Material.

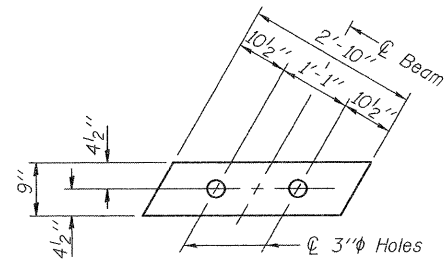
DESIGNED	IJL	EXAMINED	<i>James F. Hoff</i>	DATE	MARCH 11, 2011
CHECKED	GGE	PASSED	<i>Ch. Carl Jones</i>		
DRAWN	Kyle M. Steffen				
CHECKED	IJL GGE				

STATE OF ILLINOIS
DEPARTMENT OF TRANSPORTATION

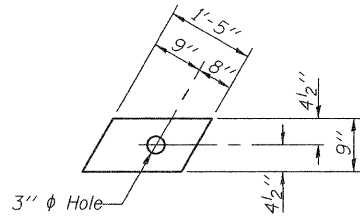
33" x 36" PPC DECK BEAM
SN 043-0040

SHEET NO. 2 OF 6 SHEETS

F.A.P. RTE.	SECTION	COUNTY	TOTAL SHEETS	SHEET NO.
642	110BR-3M	JO DAVIESS	12	8
CONTRACT NO. 64E90			ILLINOIS FED. AID PROJECT	



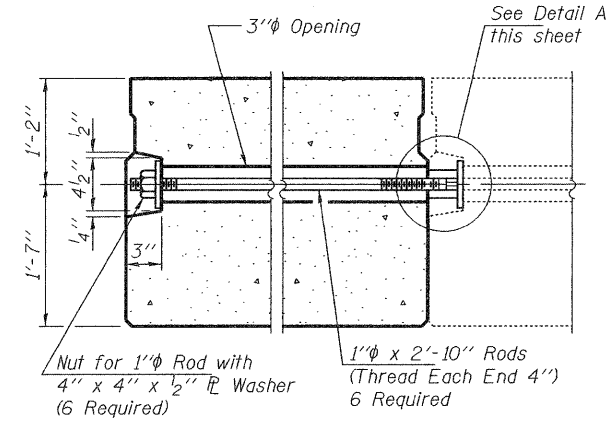
FABRIC BEARING PAD



FABRIC ADJUSTING SHIM

FIXED

Note: Omit holes when using expansion bearings.



TYPICAL TRANSVERSE TIE ASSEMBLY

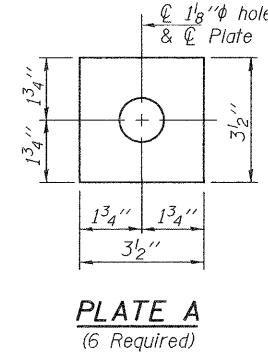
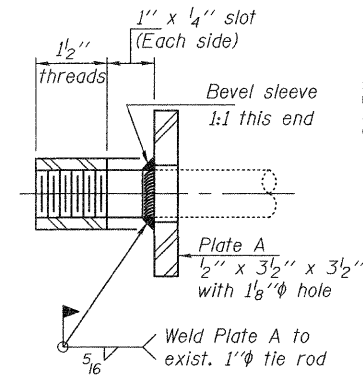
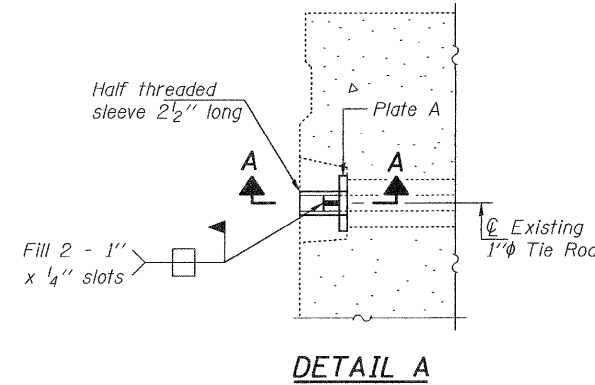


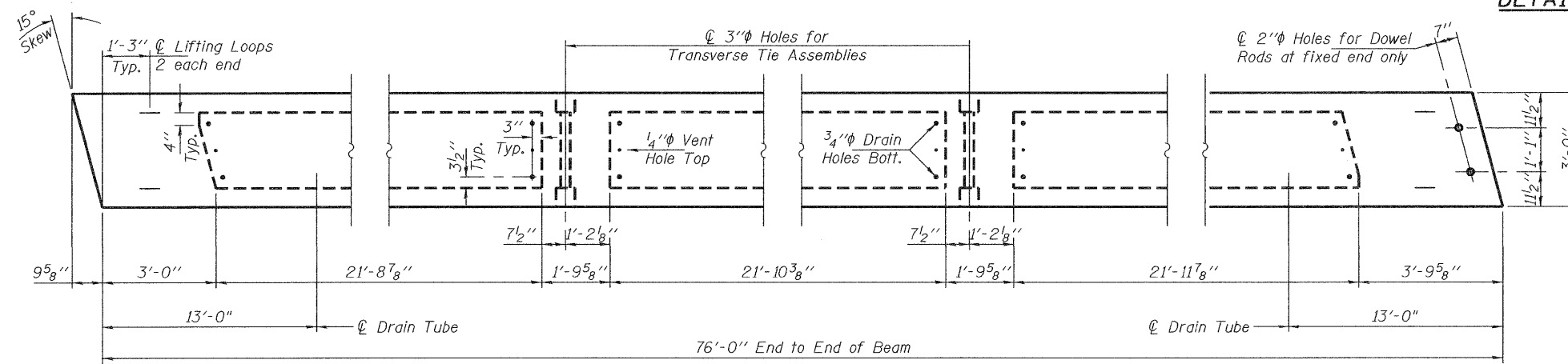
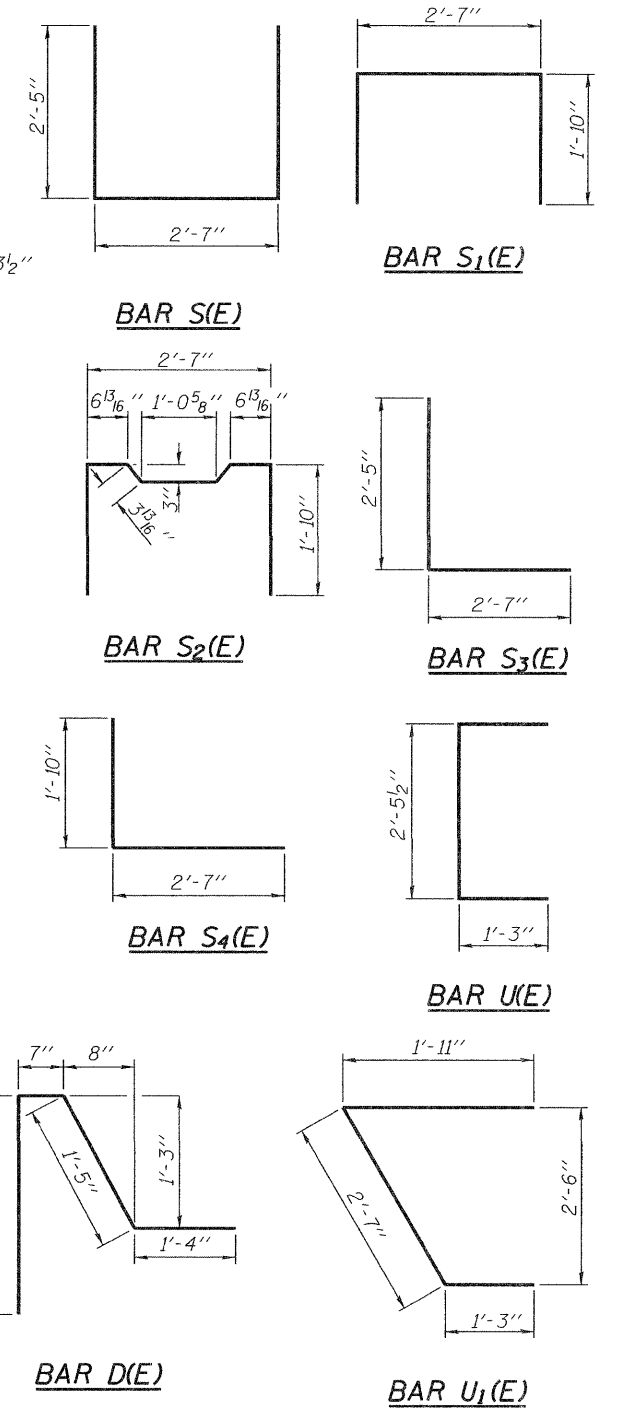
PLATE A
(6 Required)



SECTION A-A
(6 Required)

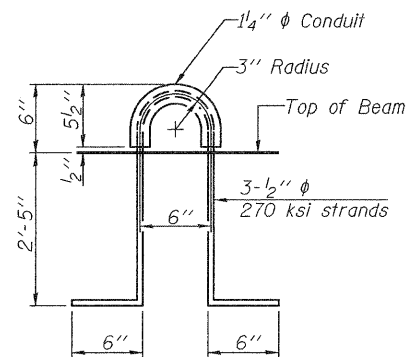


DETAIL A



BEAM PLAN

(Span 1 shown, Span 2 similar by 180° rotation)



LIFTING LOOP DETAIL

NOTES

Prestressing steel shall be uncoated high strength, low relaxation 7-wire strand, Grade 270. The nominal diameter shall be 1/2" and the nominal cross-sectional area shall be 0.153 sq. in. The 1" rods in the transverse tie assembly shall be tightened to a snug fit and the threads set. Pockets on exterior faces of bridge shall be filled with grout after transverse tie assembly is in place. Reinforcement bars shall conform to ASTM A 706, Grade 60. (See Special Provisions). Two 1/8" fabric adjusting shims of the dimensions shown shall be provided for each bearing pad location. A minimum 2 1/2" lifting pin shall be used to engage the lifting loops during handling. Corrosion Inhibitor, per Article 1020.05(b)(12) and 1021.06 of the Standard Specifications, shall be used in the concrete for precast prestressed concrete deck beams. Compressive strength of prestressed concrete, f'c, shall be 6000 psi. Compressive strength of prestressed concrete at release, f'ci, shall be 5000 psi.

BILL OF MATERIAL

Precast Prestressed Conc. Deck Bms. (33" depth)	Sq. Ft.	684
-------------------------------------------------	---------	-----

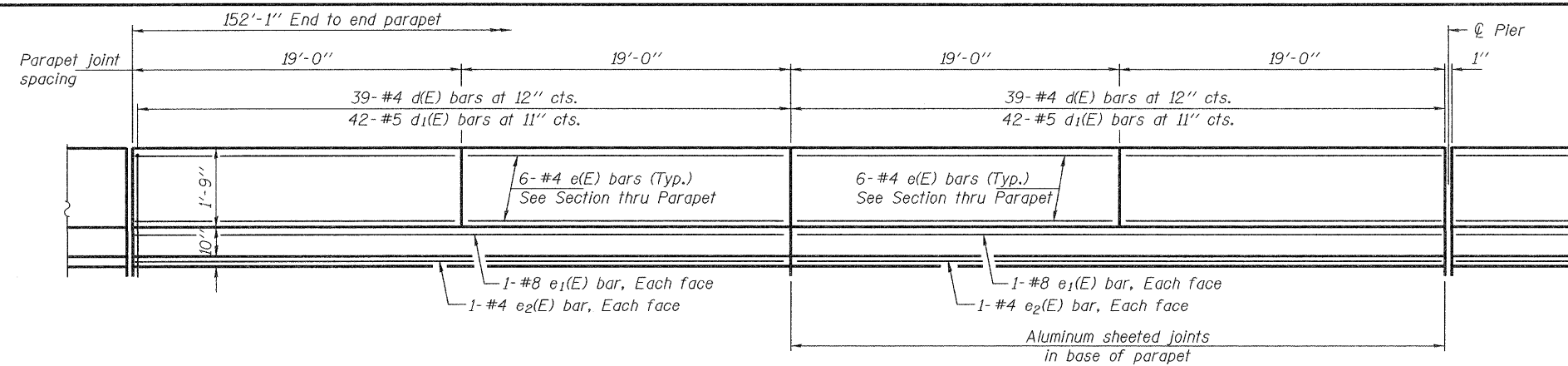
DESIGNED	IJL	EXAMINED	Joey F. Jelliff	DATE	MARCH 11, 2011
CHECKED	GGE	PASSED	ACTING ENGINEER OF STRUCTURAL SERVICES		
DRAWN	Kyle M. Steffen		ACTING ENGINEER OF BRIDGES AND STRUCTURES		
CHECKED	IJL GGE				

STATE OF ILLINOIS
DEPARTMENT OF TRANSPORTATION

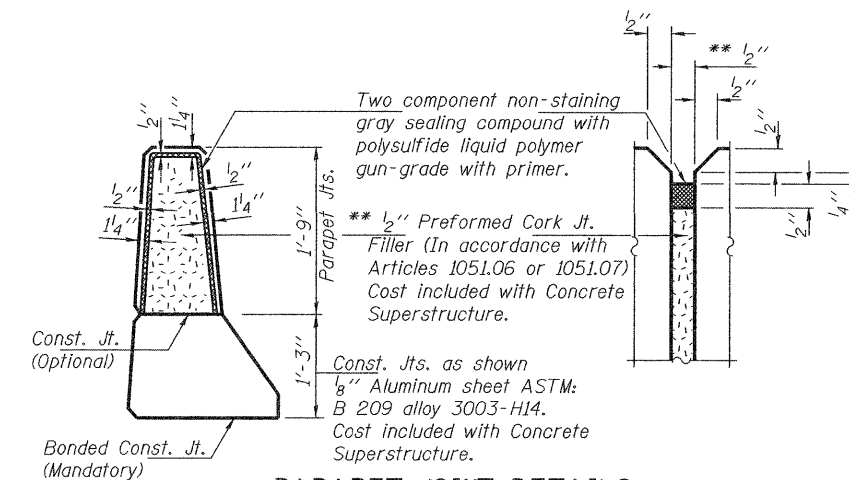
33" x 36" PPC DECK BEAM DETAILS
SN 043-0040

SHEET NO. 3 OF 6 SHEETS

F.A.P. RTE.	SECTION	COUNTY	TOTAL SHEETS	SHEET NO.
642	(10BR-3M)	JO DAVIESS	12	9
CONTRACT NO. 64E90			ILLINOIS FED. AID PROJECT	

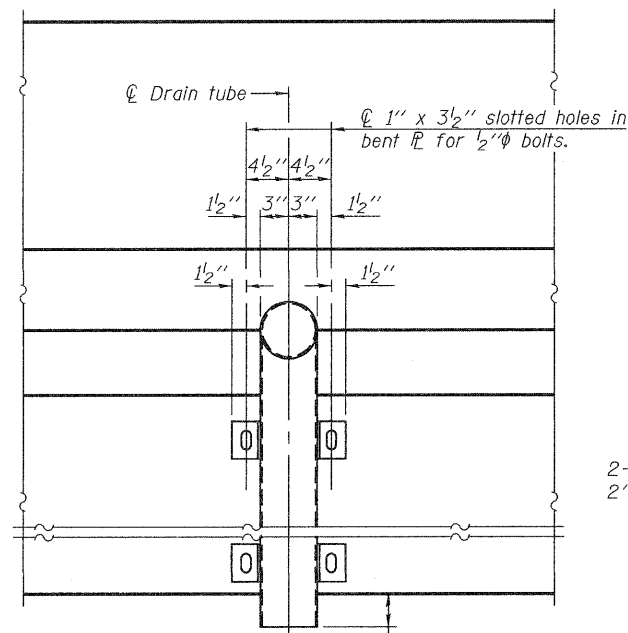


INSIDE ELEVATION OF PARAPET
(Span 1 shown, Span 2 similar)



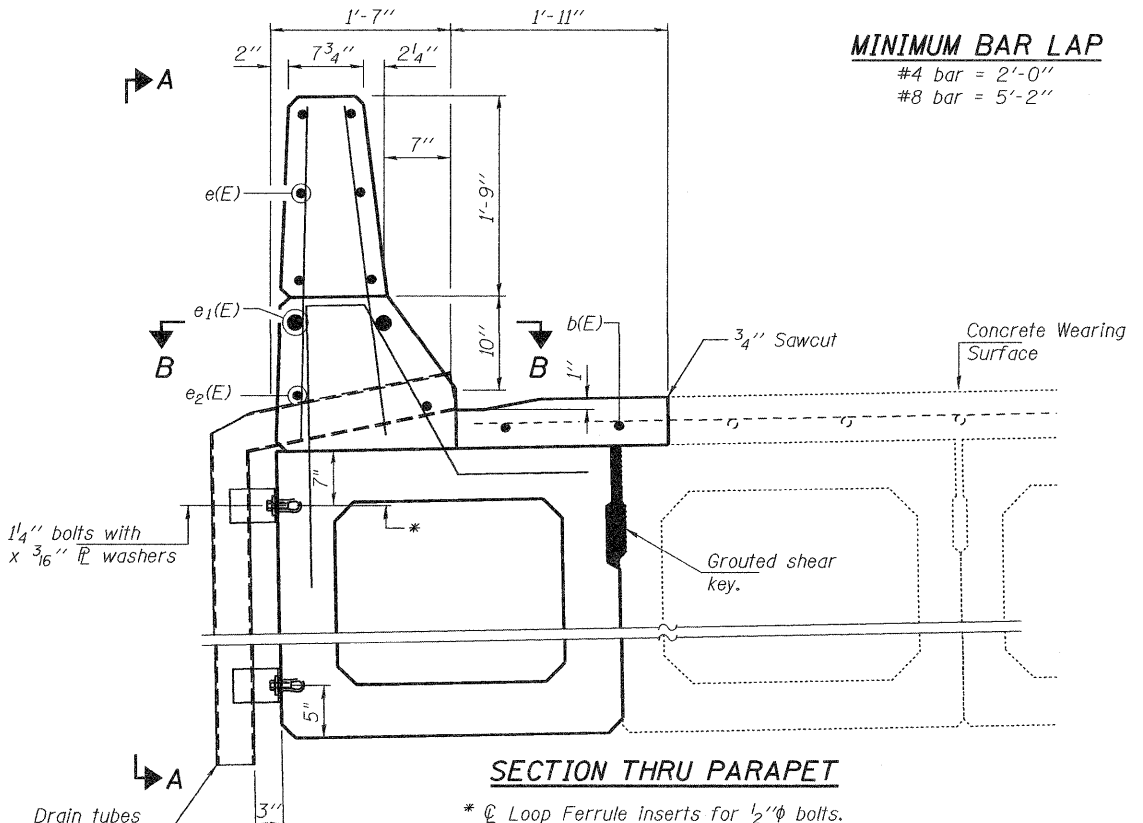
PARAPET JOINT DETAILS
** 1/2" Preformed Cork Jt. Filler at \bar{C} Pier.

MINIMUM BAR LAP
#4 bar = 2'-0"
#8 bar = 5'-2"



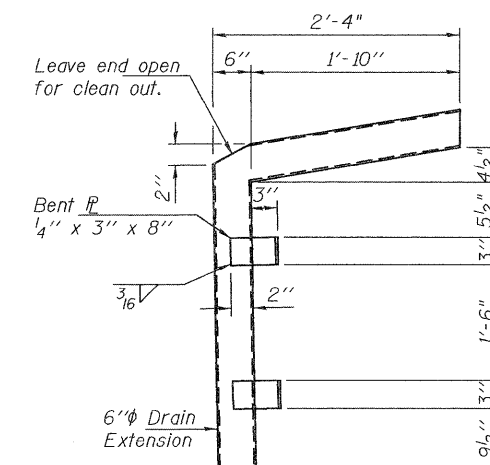
VIEW A-A

Note:
All drain tubes and accessories shall be galvanized according to AASHTO M111 or M232, (as applicable).
The cost of the drain tube assemblies and everything necessary for their installation is included with Floor Drains.

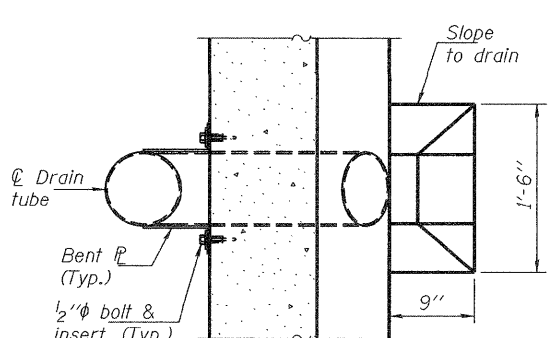


SECTION THRU PARAPET
* \bar{C} Loop Ferrule inserts for 1/2" \bar{C} bolts.

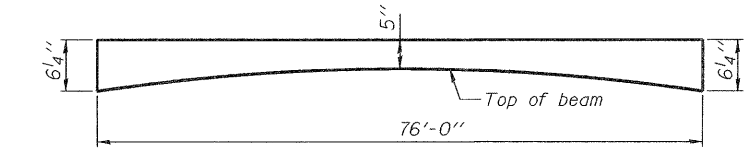
The Contractor shall use extreme care during concrete removal so as not to damage the PPC Deck Beams to remain.



DETAIL A



SECTION B-B

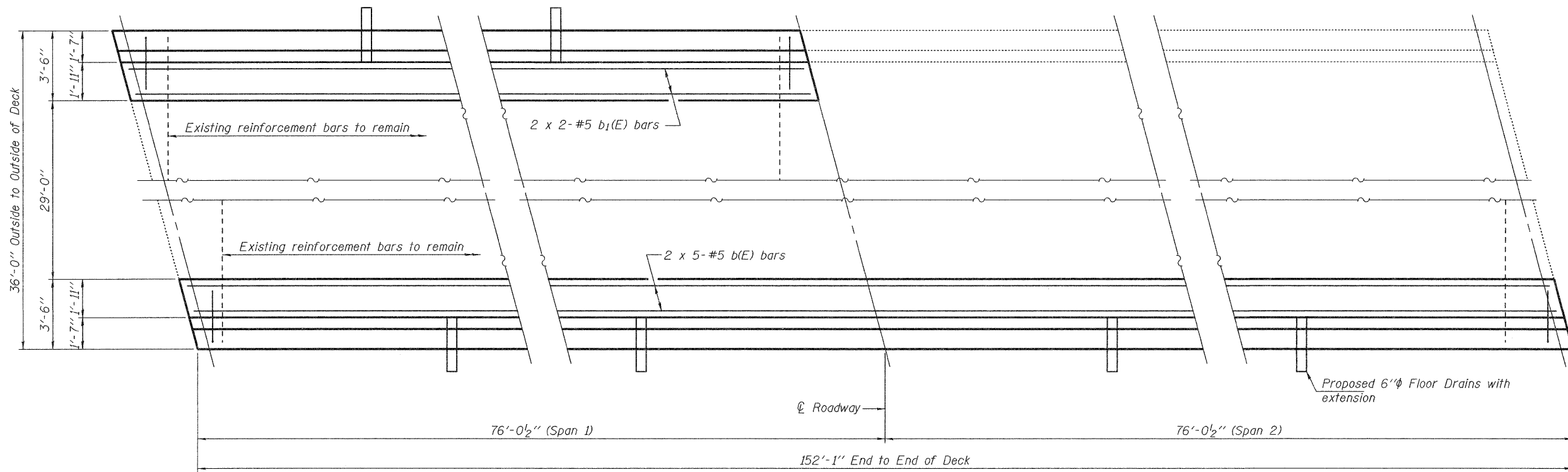


ANTICIPATED CONCRETE WEARING SURFACE PROFILE
(For information only)

SUPERSTRUCTURE BILL OF MATERIAL

Bar	No.	Size	Length	Shape
b(E)	10	#4	31'-9"	—
b1(E)	4	#4	39'-2"	—
d(E)	234	#4	2'-9"	—
d1(E)	252	#5	2'-9"	—
e(E)	72	#4	18'-8"	—
e1(E)	12	#8	37'-8"	—
e2(E)	12	#4	37'-8"	—
Reinforcement Bars, Epoxy Coated		Pound	3880	
Concrete Superstructure		Cu. Yd.	30.2	
Concrete Removal		Cu. Yd.	30.2	

Bars indicated thus 2 x 5-#4 etc. indicates 2 line of bars with 5 lengths per line.

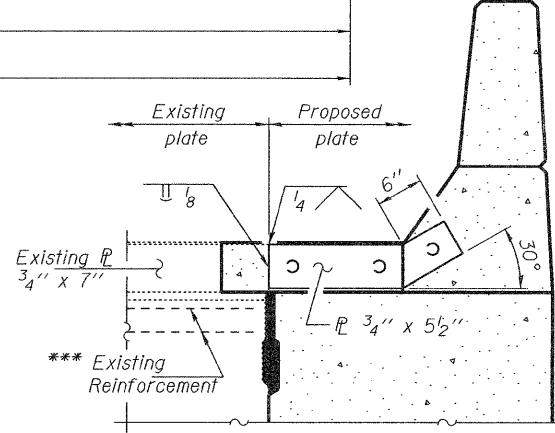


PARTIAL DECK PLAN

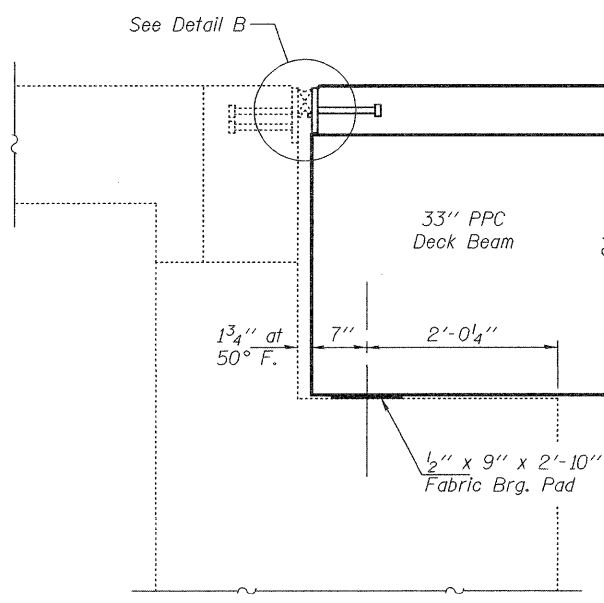
* Existing dowel rods are to be burned off, ground flush, and sealed with epoxy prior to placement of new beams. Cost included in Removal of Existing PPC Deck Beams. After beams have been erected holes shall be drilled into cap and dowel rods placed. Dowel holes shall be filled with non-shrink grout to top of beam and allowed to cure a minimum of 24 hours prior to grouting the shear keys.

** 1" Joint shall be filled with a non-shrink grout. Cost included with Concrete Superstructure.

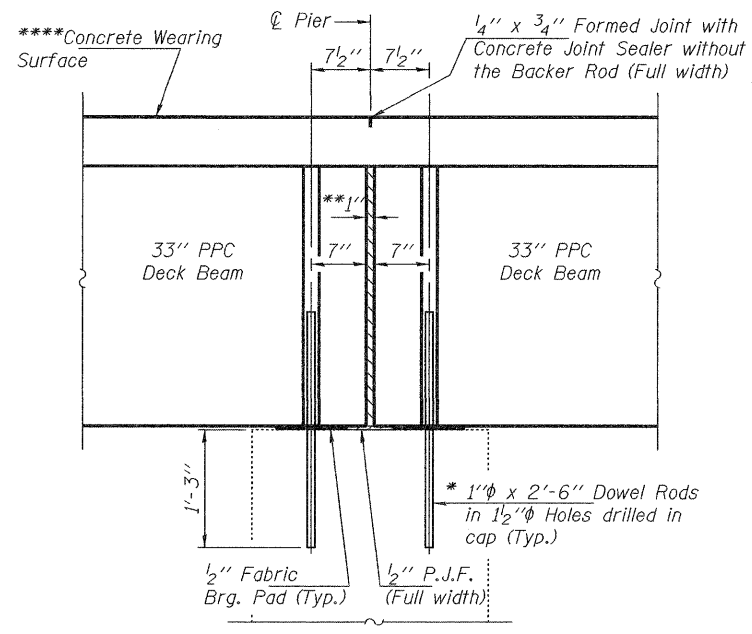
*** Existing transverse reinforcement extending to the new PPC Deck Beam at the abutments shall be cut.
 **** Cost included with Concrete Superstructure



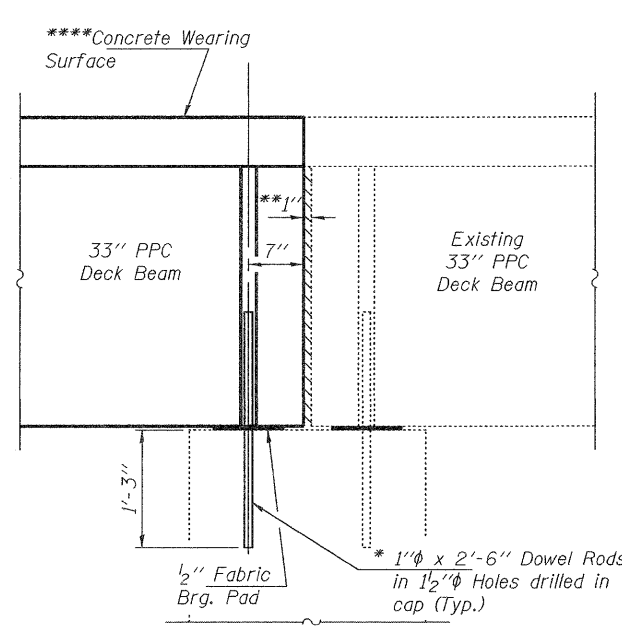
TYPICAL END TREATMENT OF PLATE AT PARAPET



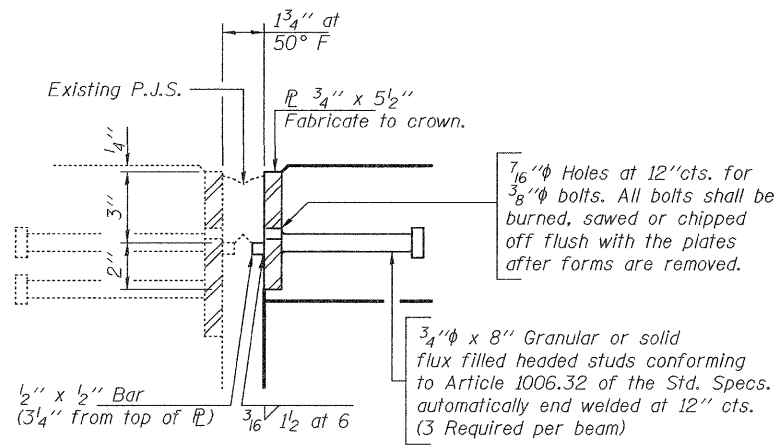
SECTION THRU ABUTMENTS



SECTION THRU PIER AT EAST FASCIA



SECTION THRU PIER AT WEST FASCIA



DETAIL B

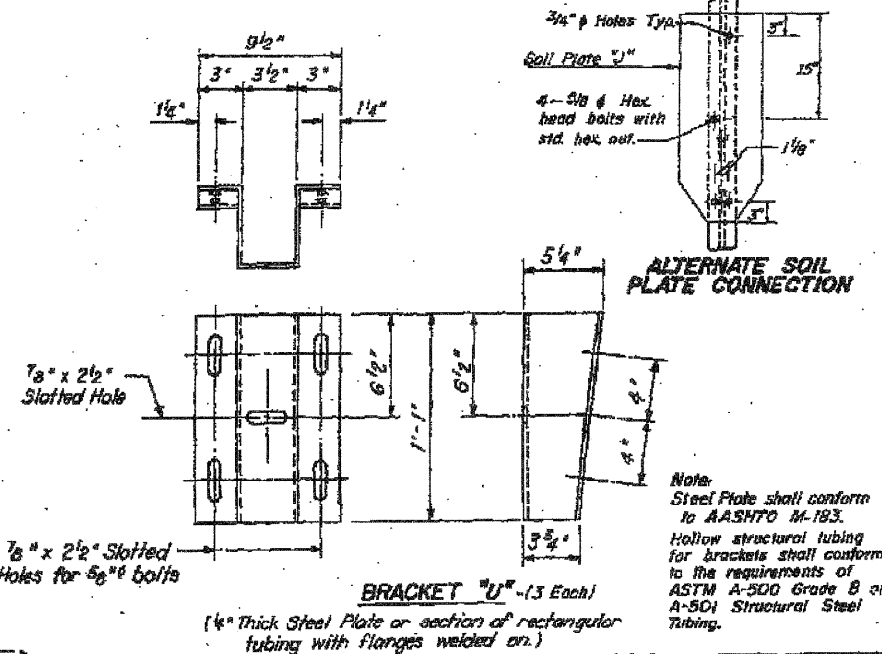
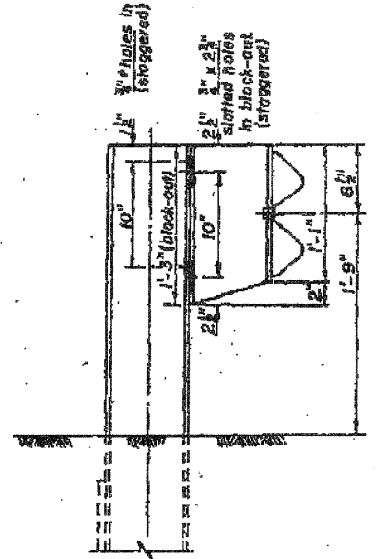
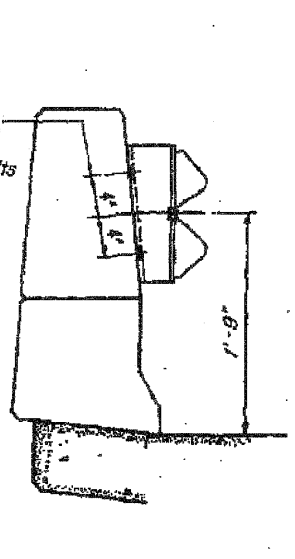
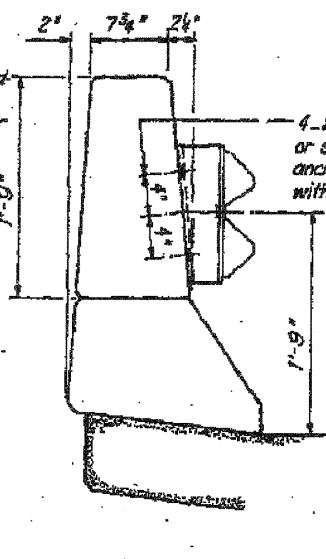
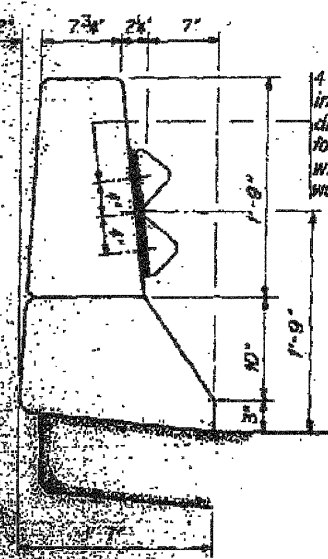
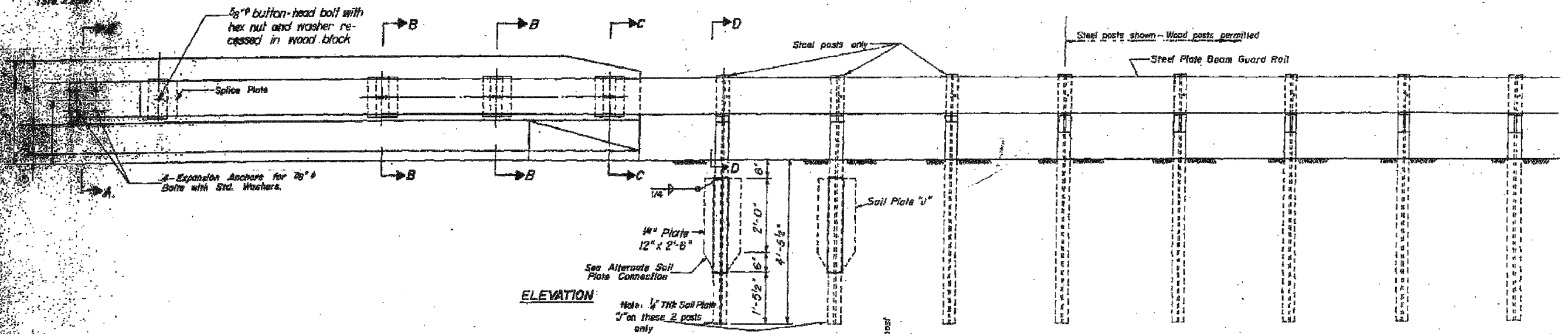
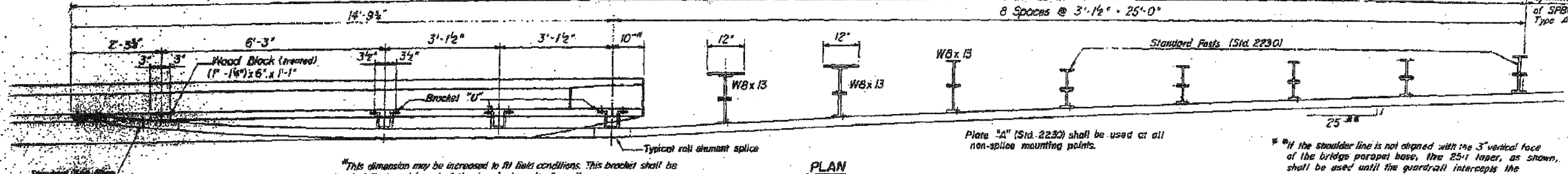
Cost of Plates & Studs included with Concrete Superstructure

DESIGNED	I.J.L.	EXAMINED	<i>Joanne F. Duff</i>	DATE	MARCH 11, 2011	STATE OF ILLINOIS DEPARTMENT OF TRANSPORTATION	REPAIR DETAILS SN 043-0040	F.A.P. RTE.	SECTION	COUNTY	TOTAL SHEETS	SHEET NO.	
CHECKED	G.G.E.	PASSED	<i>Carl Long</i>					642	10BR-3M	JO DAVISS	12	11	
DRAWN	Kyle M. Steffen												
CHECKED	I.J.L. G.G.E.												
								SHEET NO. 5 OF 6 SHEETS		ILLINOIS FED. AID PROJECT			

For limits of Traffic Barrier Terminal Type 6. (1 Each)

8 Spaces @ 3'-1 1/2" = 25'-0"

Pay limits of SPBGR Type 4



GENERAL NOTES:

For details of guardrail not shown see Standard 2250

When a bridge expansion joint exists between the End Shoe and the first post, all splice bolts at the End Shoe and post bolts at the brackets shall be fitted with a locknut or double nuts tightened only to a point that will allow guardrail movement.

FOR INFORMATION ONLY

TRAFFIC BARRIER TERMINAL TYPE 6

STANDARD 2341-1

(Full Size)

DESIGNED	IJL
CHECKED	GGE
DRAWN	Kyle M. Steffen
CHECKED	IJL GGE

EXAMINED	<i>Joanne F. Duff</i>	DATE	MARCH 11, 2011
PASSED	ACTING ENGINEER OF STRUCTURAL SERVICES		
	<i>Carl Perry</i>		
	ACTING ENGINEER OF BRIDGES AND STRUCTURES		

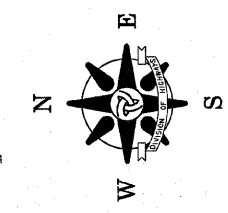
STATE OF ILLINOIS
DEPARTMENT OF TRANSPORTATION

TRAFFIC BARRIER TERMINAL DETAILS (FOR INFORMATION ONLY)
SN 043-0040
SHEET NO. 6 OF 6 SHEETS

F.A.P. RTE.	SECTION	COUNTY	TOTAL SHEETS	SHEET NO.
642	(10BR-3M)	JO DAVIESS	12	11A
CONTRACT NO. 64E90			ILLINOIS FED. AID PROJECT	

Township 45 North, Range 1 East of the Third Principal Meridian

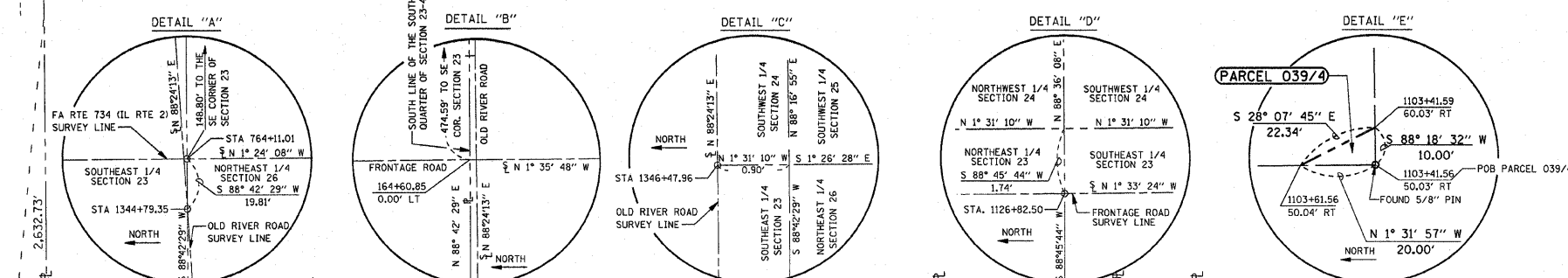
Notes: BEARINGS SHOWN HEREON ARE BASED ON SURVEY CONTROL DATA AS PROVIDED BY THE ILLINOIS DEPARTMENT OF TRANSPORTATION



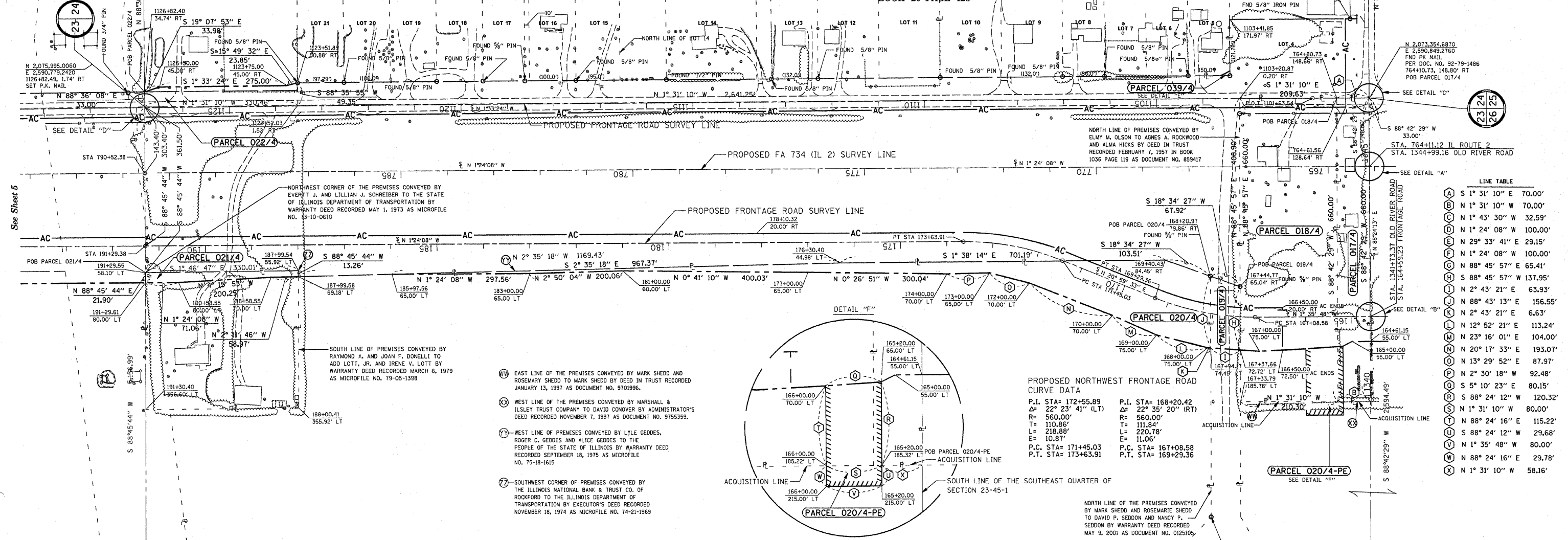
LEGEND
 ● = SET MONUMENTATION AS NOTED
 ○ = FOUND MONUMENTATION AS NOTED

MICHAEL D. GEISELHART
 PARCEL 039/4 0.002 AC.
 PART OF LOT 5 OF BROWN'S NORTH MAIN ACRES BEING A SUBDIVISION OF PART OF THE SOUTHWEST QUARTER OF SECTION 24, TOWNSHIP 45 NORTH, RANGE 1 EAST OF THE THIRD PRINCIPAL MERIDIAN.

Total Area	1.007 Ac.
Total Area Req'd.	0.002 Ac.
Area In Exist. Rdwy.	0.000 Ac.
Net Area Req'd.	0.002 Ac.
Area Remaining	1.005 Ac.



BROWN'S NORTH MAIN ACRES
 BOOK 20 PAGE 125



See Sheet 5

See Sheet 3

N 2,075,893.6010
 E 2,595,823.4560
 FND 5/8" IRON PIN
 PER DOC. NO. 0114297

DAVID CONOVER
 PARCEL 017/4 0.947 AC.
 PART OF THE SOUTHEAST QUARTER OF SECTION 23, TOWNSHIP 45 NORTH, RANGE 1 EAST OF THE THIRD PRINCIPAL MERIDIAN

Total Area	1.000 Ac.
Total Area Req'd.	1.000 Ac.
Area In Exist. Rdwy.	0.053 Ac.
Net Area Req'd.	0.947 Ac.
Area Remaining	0.000 Ac.

AGNES A. ROCKWOOD AND ALMA HICKS, TRUSTEES
 PARCEL 018/4 3.171 AC.
 PART OF THE SOUTHEAST QUARTER OF SECTION 23, TOWNSHIP 45 NORTH, RANGE 1 EAST OF THE THIRD PRINCIPAL MERIDIAN

Total Area	3.330 Ac.
Total Area Req'd.	3.330 Ac.
Area In Exist. Rdwy.	0.159 Ac.
Net Area Req'd.	3.171 Ac.
Area Remaining	0.000 Ac.

DAVID P. SEDDON AND NANCY SEDDON
 PARCEL 019/4 0.216 AC.
 PART OF THE SOUTHEAST QUARTER OF SECTION 23, TOWNSHIP 45 NORTH, RANGE 1 EAST OF THE THIRD PRINCIPAL MERIDIAN

Total Area	6.010 Ac.
Total Area Req'd.	0.216 Ac.
Area In Exist. Rdwy.	1.526 Ac.
Net Area Req'd.	0.216 Ac.
Area Remaining	5.794 Ac.

MARK SHEDD, TRUSTEE
 PARCEL 020/4 1.526 AC.
 PART OF THE SOUTHEAST QUARTER OF SECTION 23, TOWNSHIP 45 NORTH, RANGE 1 EAST OF THE THIRD PRINCIPAL MERIDIAN

Total Area	122.580 Ac.
Total Area Req'd.	1.526 Ac.
Area In Exist. Rdwy.	0.000 Ac.
Net Area Req'd.	1.526 Ac.
Area Remaining	121.054 Ac.

ADD LOTT, JR. AND IRENE V. LOTT,
 PARCEL 021/4 0.137 AC.
 PART OF THE NORTHEAST QUARTER OF THE SOUTHWEST QUARTER OF SECTION 23, TOWNSHIP 45 NORTH, RANGE 1 EAST OF THE THIRD PRINCIPAL MERIDIAN

Total Area	2.270 Ac.
Total Area Req'd.	0.137 Ac.
Area In Exist. Rdwy.	0.000 Ac.
Net Area Req'd.	0.137 Ac.
Area Remaining	2.133 Ac.

MICHAEL J. KERNO AND JOAN M. KERNO
 PARCEL 022/4 0.077 AC.
 PART OF THE NORTH HALF OF THE SOUTHWEST QUARTER OF SECTION 24, TOWNSHIP 45 NORTH, RANGE 1 EAST OF THE THIRD PRINCIPAL MERIDIAN

Total Area	5.000 Ac.
Total Area Req'd.	0.077 Ac.
Area In Exist. Rdwy.	0.250 Ac.
Net Area Req'd.	0.077 Ac.
Area Remaining	4.673 Ac.

SURVEYOR'S STATEMENT

I, JAMES A. GIBSON, HEREBY STATE THAT I AM A PROFESSIONAL LAND SURVEYOR OF THE STATE OF ILLINOIS; THAT THIS RIGHT-OF-WAY SURVEY FOR FAU ROUTE 734 WAS MADE BY ME OR UNDER MY DIRECT SUPERVISION; THAT THE LAND CORNER TIES AS SHOWN HEREON, ARE A TRUE AND CORRECT REPRESENTATION OF SAID SURVEY; AND THAT THE PLAT HEREON IS IN ACCORDANCE WITH APPLICABLE SECTIONS OF THE LAND ACQUISITION POLICIES AND PROCEDURES MANUAL, OF THE DEPARTMENT'S DISTRICT POLICIES.

DATE: _____
 SIGNED: _____
 JAMES A. GIBSON ILLINOIS PROFESSIONAL LAND SURVEYOR NO. 35-3196
 MY CURRENT LICENSE EXPIRES NOVEMBER 30, 2012

STATE OF ILLINOIS
RIGHT OF WAY PLAT
 FA RTE 734 SEC 17-2
 COUNTY OF WINNEBAGO
 STA 764+00 TO STA 792+00
 SHEET NUMBER 4
 SCALE 1/4" = 100 FT.
 DATE 1-18-2011
 JOB NO. R-92-020-97

DRAWER 49 FOLDER 19

Missman
 STANLEY & ASSOCIATES, P.C.
 333 East State Street, Box 4327
 Rockford, Illinois 61110-0827
 Ph 815-965-6400 Fax 815-965-6416
 www.msa-90.com

DESIGN FIRM LICENSE NUMBER 184-000843