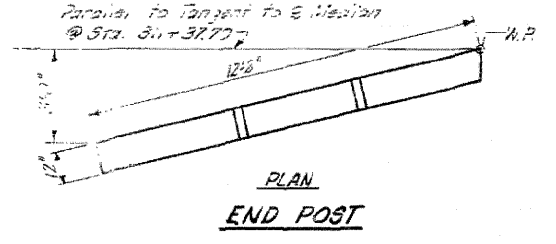
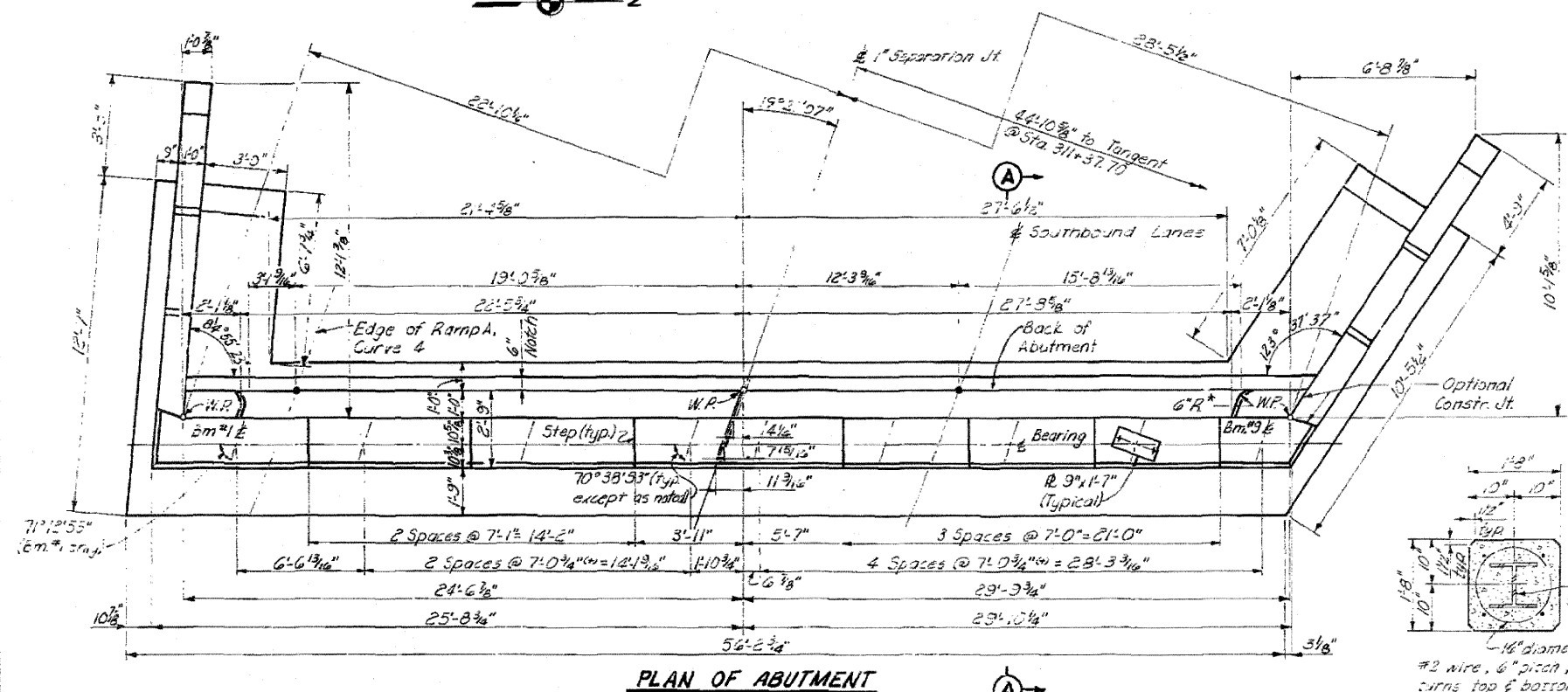
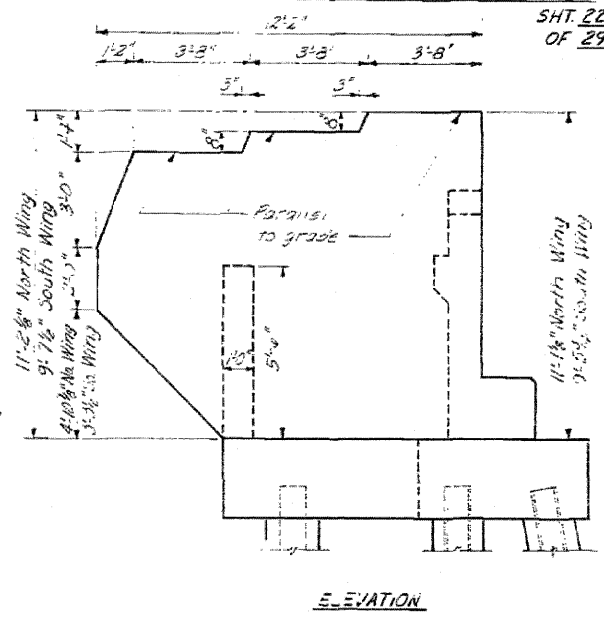
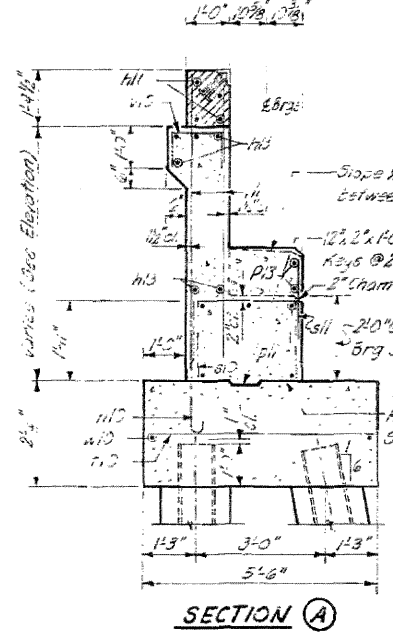
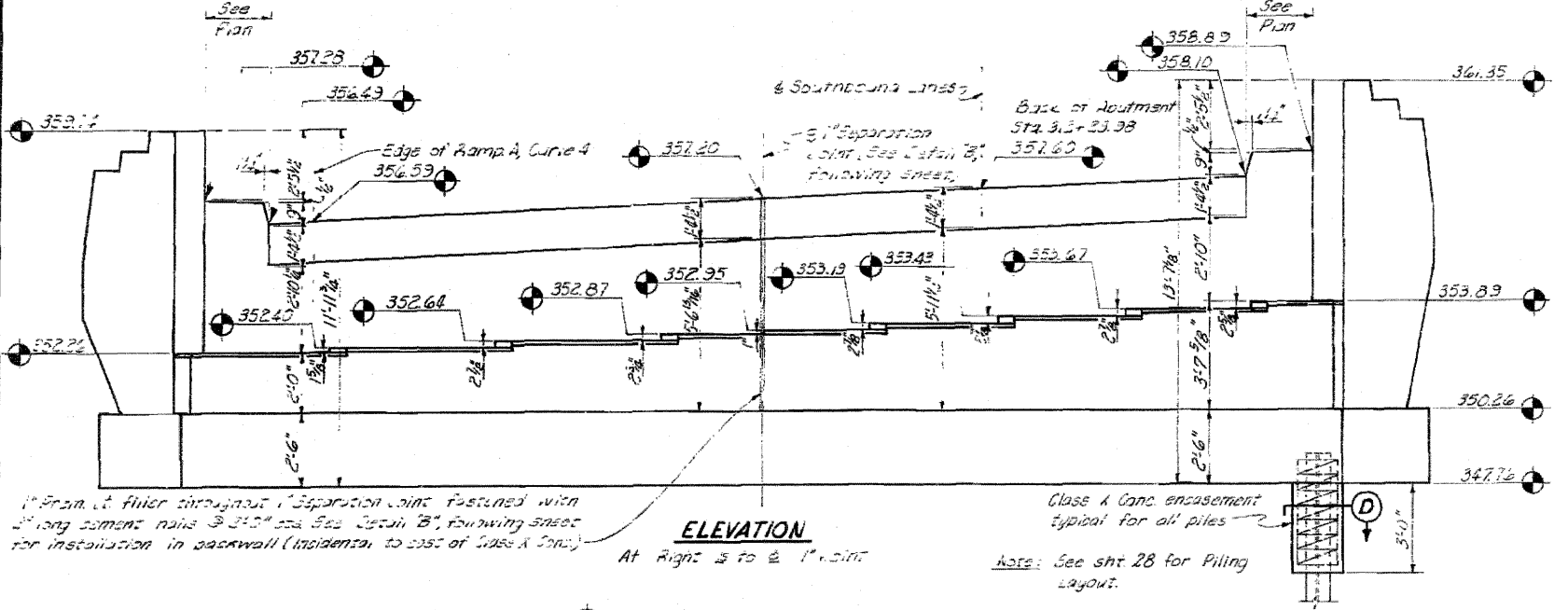
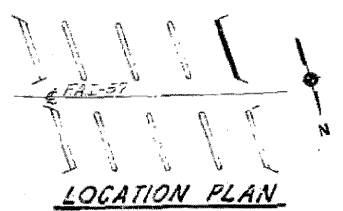
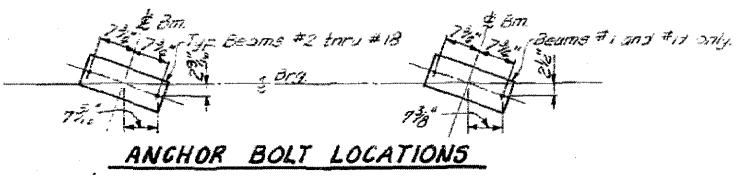
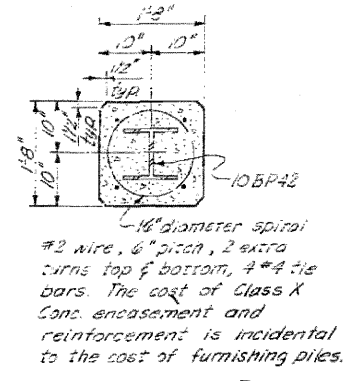


STATE OF ILLINOIS
DEPARTMENT OF PUBLIC WORKS & BUILDINGS
DIVISION OF HIGHWAYS

ROUTE NO.	SEC.	COUNTY	TOTAL SHEETS	SHEET NO.
FAI-57	46-2 HB	KANKAKEE	46	32
STA.	TO STA.			
			SHT. 22 OF 29	



FOR INFORMATION ONLY



DESIGNED	WRT	EXAMINED	
CHECKED	LJL	ENGINEER OF BRIDGE AND TRAFFIC STRUCTURES	
DRAWN	L.S.	PASSED	
CHECKED	WRT	APPROVED	
		ENGINEER OF DESIGN	
		CHIEF HIGHWAY ENGINEER	

ILLINOIS DIVISION OF HIGHWAYS
SOUTH BRIDGE, WEST ABUTMENT DIMENSIONS
FAI-RTE. 57 SEC. 46-2 HB
KANKAKEE COUNTY
STA. 311+37.70

Added 4-26-11