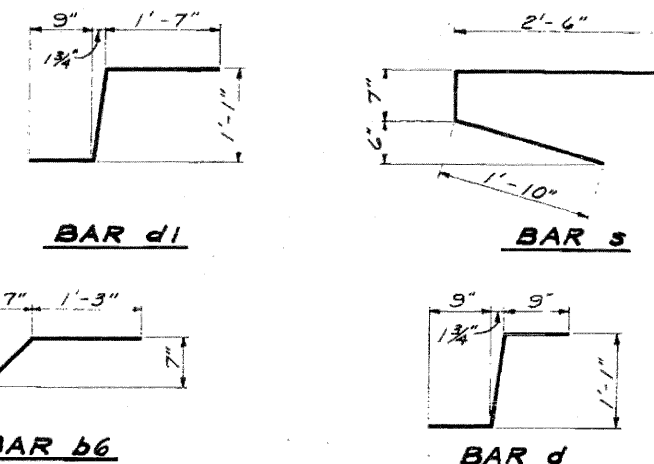
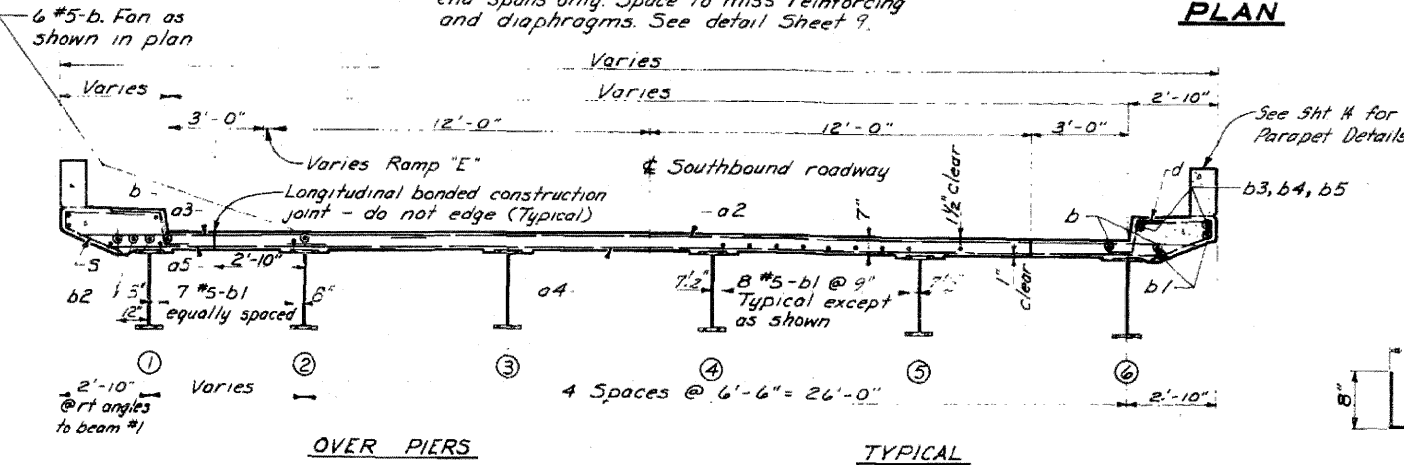
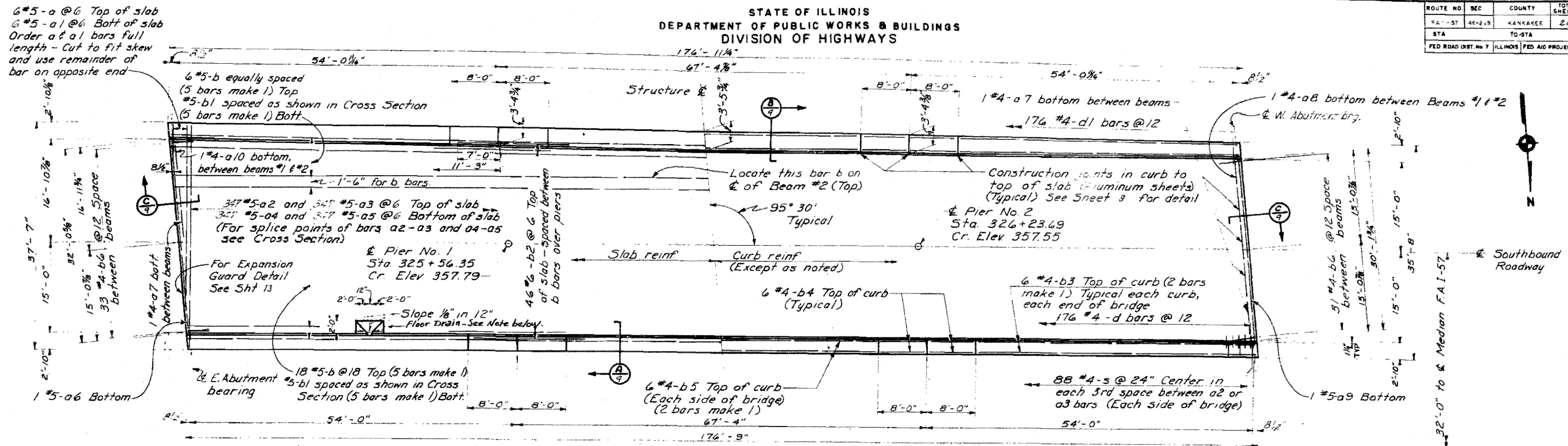


STATE OF ILLINOIS
DEPARTMENT OF PUBLIC WORKS & BUILDINGS
DIVISION OF HIGHWAYS

ROUTE NO.	SEC.	COUNTY	TOTAL SHEETS	SHEET NO.
57	46-2B	KANKAKEE	28	7
STA.	TO STA.			
FED. ROAD DIST. NO. 7	ILLINOIS FED. AID PROJECT: 52-17-1-117			



SUPERSTRUCTURE SOUTH BRIDGE
BILL OF MATERIAL

Bar No	Size	Length	Shape
a	#5	37'-4"	
a1	#5	34'-8"	
a2	#5	25'-6"	
a3	#5	17'-9"	
a4	#5	28'-0"	
a5	#5	7'-6"	
a6	#5	31'-8"	
a7	#4	6'-3"	
a8	#4	3'-8"	
a9	#5	29'-10"	
a10	#4	5'-6"	
b	#5	34'-6"	
b1	#5	34'-3"	
b2	#6	18'-3"	
b3	#4	24'-0"	
b4	#4	7'-9"	
b5	#4	24'-0"	
b6	#4	3'-6"	
d	#4	2'-7"	J
d1	#4	3'-4"	J
s	#4	4'-11"	J
Class X Concrete			Cu Yd. 173.8
Reinforcement Bars			Lb. 44,959
Structural Steel			Lb. 33,089
Name Plates			Each 1

TOTAL BILL OF MATERIAL SUPERSTRUCTURE

Class X Concrete	Cu Yd.	173.8
Reinforcement Bars	Lb.	105,722
Structural Steel	Lb.	379,368
Handrail	Lin Ft.	706.5
Name Plates	Each	2

* Includes parapet quantities. (Sht 14)

* Weight of Bolsters, Rockers, Bearing Plates, Lead Plates and Anchor Bolts included as Structural Steel. Estimated weight = 5,810 Lb.

ILLINOIS DIVISION OF HIGHWAYS
SLAB REINFORCEMENT, SOUTH BRIDGE
F.A.I. RTE 57 SEC. 46-2VB
KANKAKEE COUNTY
STA. 325 + 93.10

DESIGNED LJL
CHECKED KJH
DRAWN JNG
CHECKED KJH

EXAMINED
ENGINEER OF BRIDGE AND TRAFFIC STRUCTURES

PASSED
ENGINEER OF DESIGN

APPROVED
CHIEF HIGHWAY ENGINEER

REVISIONS:
CHANGED b6 bars from #6 to #5 & revised bar weight from 42,039 to 44,959 Lb. for So. Bridge & E. Bridges respectively.
S. E. 12-20-62

FOR INFORMATION ONLY Added 4-26-11