
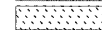

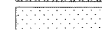

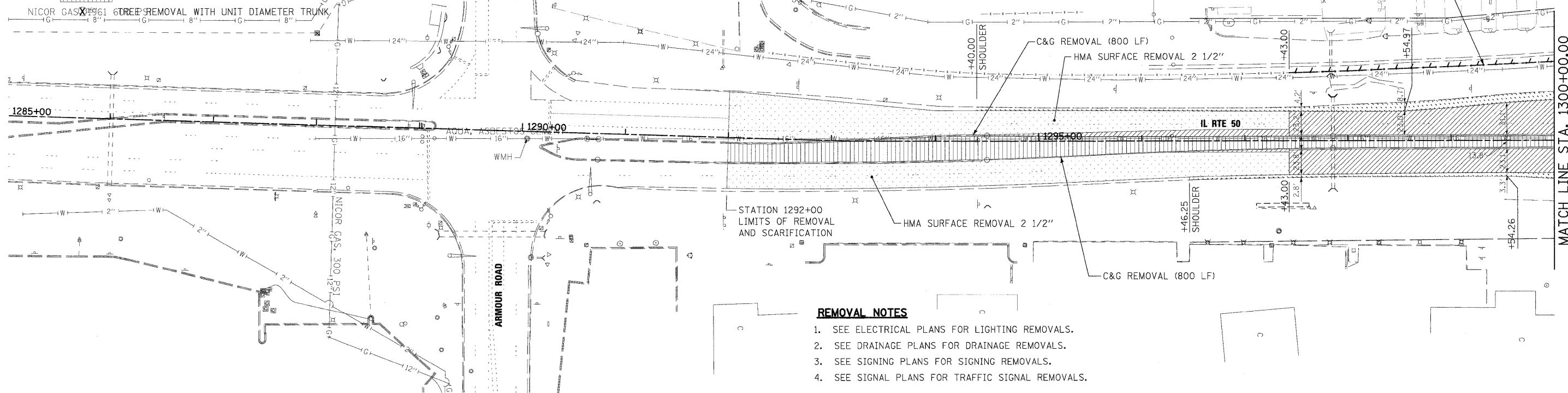
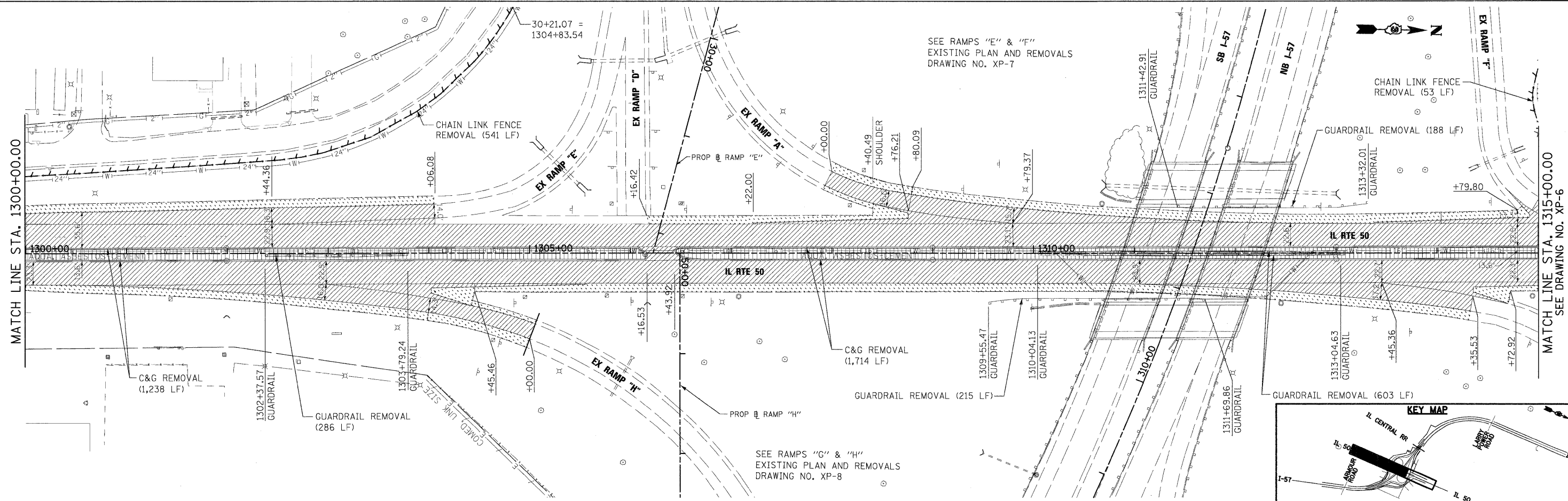


LEGEND

-  ROADWAY PAVEMENT REMOVAL
-  SHOULDER REMOVAL
-  DRIVEWAY PAVEMENT REMOVAL
-  BITUMINOUS SURFACE REMOVAL
-  MEDIAN REMOVAL

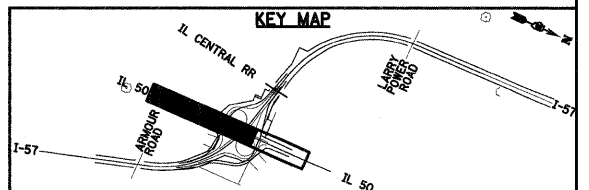


- REMOVAL NOTES**
1. SEE ELECTRICAL PLANS FOR LIGHTING REMOVALS.
 2. SEE DRAINAGE PLANS FOR DRAINAGE REMOVALS.
 3. SEE SIGNING PLANS FOR SIGNING REMOVALS.
 4. SEE SIGNAL PLANS FOR TRAFFIC SIGNAL REMOVALS.



SEE RAMP "G" & "H"
EXISTING PLAN AND REMOVALS
DRAWING NO. XP-8

SEE RAMP "E" & "F"
EXISTING PLAN AND REMOVALS
DRAWING NO. XP-7



| | | | | | | | | | | | | |
|--|------------------|----------------|-----------|---|---|-----------|-----------|------------------|-------------------------------|--------------------|-----------------------|-----------------|
| FILE NAME = I:\Dgn\sheets\xp005.dgn | USER NAME = EriG | DESIGNED - JTF | REVISED - | STATE OF ILLINOIS DEPARTMENT OF TRANSPORTATION | EXISTING PLAN AND REMOVALS IL-50 | | | F.A.T RTE. 57 | SECTION (46-2) I, HBR, VBR | COUNTY KANKAKEE | TOTAL SHEET 558 | SHEET NO. 47 |
| PLOT SCALE = 1:50 | CHECKED - EJG | REVISED - | REVISED - | | SCALE: | SHEET NO. | OF SHEETS | STA. | TO STA. | CONTRACT NO. 66409 | | |
| PLOT DATE = 12/22/2010 | DATE - 12/17/10 | REVISED - | REVISED - | | FED. ROAD DIST. NO. 3 ILLINOIS FED. AID PROJECT | | | | | | | |
| | | | | | | | | | | | | |