

**DRAINAGE REMOVALS**

STORM SEWER REMOVAL 12"					TRENCH BACKFILL	
FROM STATION	OFFSET	TO STATION	OFFSET	QUANTITY FOOT	QUANTITY CU YD	
303+00.0	52.5 RT	302+99.8	101.0 RT	48.5	N/A	
308+71.6	61.0 LT	308+69.3	118.5 LT	57.6	N/A	
312+25.3	64.7 LT	314+09.7	0.1 RT	231.2	31.0	
TOTAL				380.5	31.0	

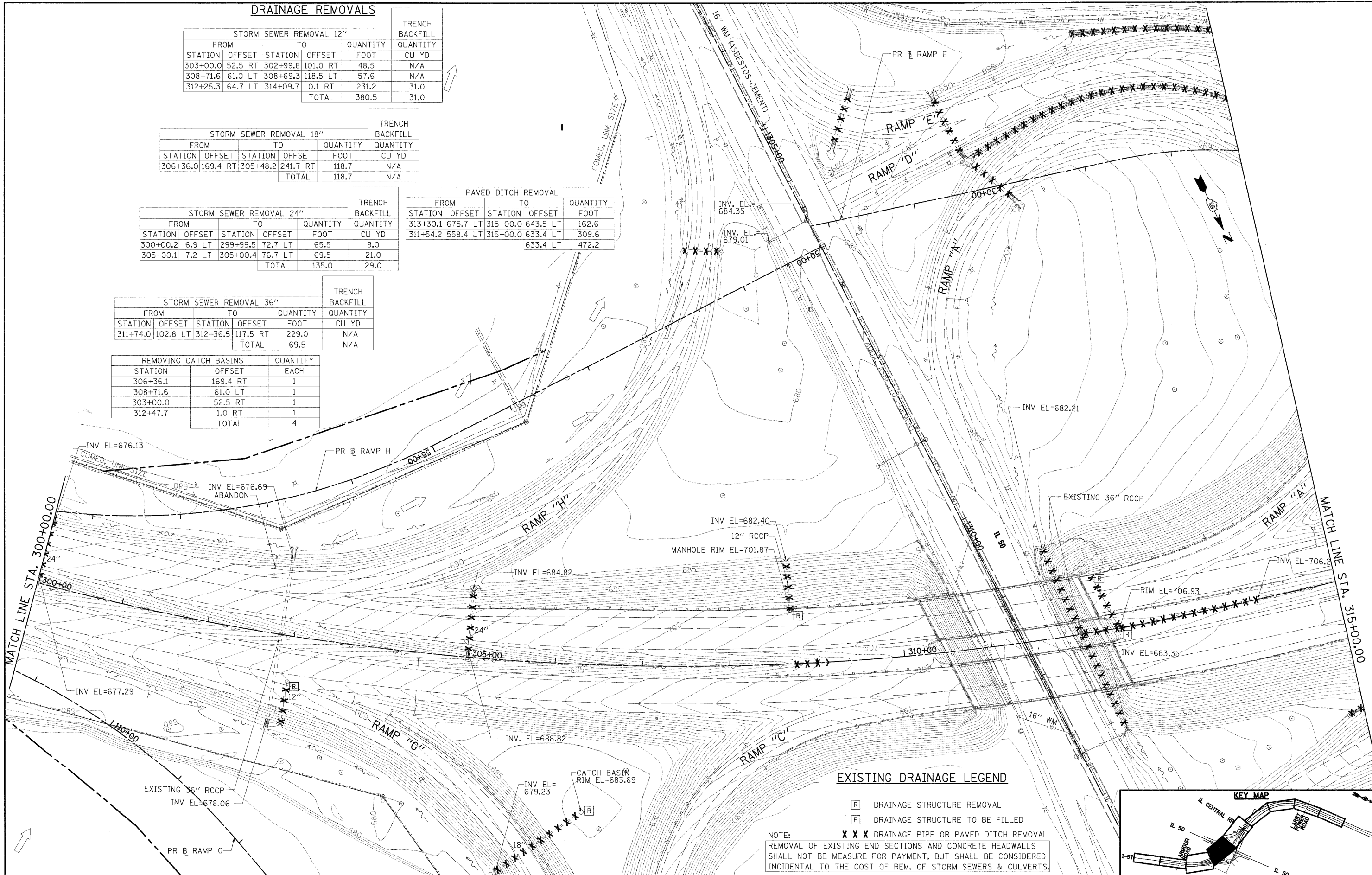
STORM SEWER REMOVAL 18"					TRENCH BACKFILL	
FROM STATION	OFFSET	TO STATION	OFFSET	QUANTITY FOOT	QUANTITY CU YD	
306+36.0	169.4 RT	305+48.2	241.7 RT	118.7	N/A	
TOTAL				118.7	N/A	

STORM SEWER REMOVAL 24"					TRENCH BACKFILL	
FROM STATION	OFFSET	TO STATION	OFFSET	QUANTITY FOOT	QUANTITY CU YD	
300+00.2	6.9 LT	299+99.5	72.7 LT	65.5	8.0	
305+00.1	7.2 LT	305+00.4	76.7 LT	69.5	21.0	
TOTAL				135.0	29.0	

PAVED DITCH REMOVAL					
FROM STATION	OFFSET	TO STATION	OFFSET	QUANTITY FOOT	
313+30.1	675.7 LT	315+00.0	643.5 LT	162.6	
311+54.2	558.4 LT	315+00.0	633.4 LT	309.6	
				633.4 LT	472.2

STORM SEWER REMOVAL 36"					TRENCH BACKFILL	
FROM STATION	OFFSET	TO STATION	OFFSET	QUANTITY FOOT	QUANTITY CU YD	
311+74.0	102.8 LT	312+36.5	117.5 RT	229.0	N/A	
TOTAL				69.5	N/A	

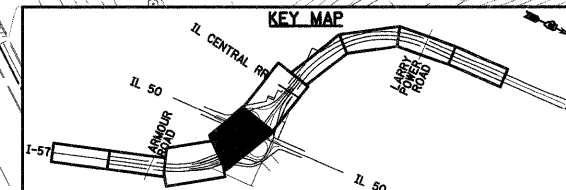
REMOVING CATCH BASINS		QUANTITY
STATION	OFFSET	EACH
306+36.1	169.4 RT	1
308+71.6	61.0 LT	1
303+00.0	52.5 RT	1
312+47.7	1.0 RT	1
TOTAL		4



**EXISTING DRAINAGE LEGEND**

- [R] DRAINAGE STRUCTURE REMOVAL
- [F] DRAINAGE STRUCTURE TO BE FILLED

NOTE: X X X DRAINAGE PIPE OR PAVED DITCH REMOVAL  
 REMOVAL OF EXISTING END SECTIONS AND CONCRETE HEADWALLS SHALL NOT BE MEASURE FOR PAYMENT, BUT SHALL BE CONSIDERED INCIDENTAL TO THE COST OF REM. OF STORM SEWERS & CULVERTS.



FILE NAME = I:\Dgn\sheet\du03.dgn	USER NAME = EricG	DESIGNED - JWM	REVISED -	<b>STATE OF ILLINOIS DEPARTMENT OF TRANSPORTATION</b>	<b>EXISTING DRAINAGE AND UTILITY PLAN</b>	F.A.I. RTE. 57	SECTION (46-2) I, HBR, VBR	COUNTY KANKAKEE	TOTAL SHEETS 558	SHEET NO. 135	
PLOT SCALE = 1:50	CHECKED - EJG	REVISED -	REVISED -			SCALE:	SHEET NO. OF SHEETS STA. TO STA.	CONTRACT NO. 66409			
PLOT DATE = 12/22/2010	DATE - 12/17/10	REVISED -	REVISED -			FED. ROAD DIST. NO. 3 [ILLINOIS] FED. AID PROJECT					