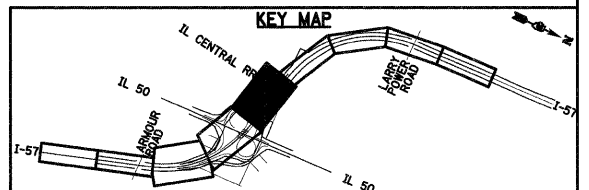
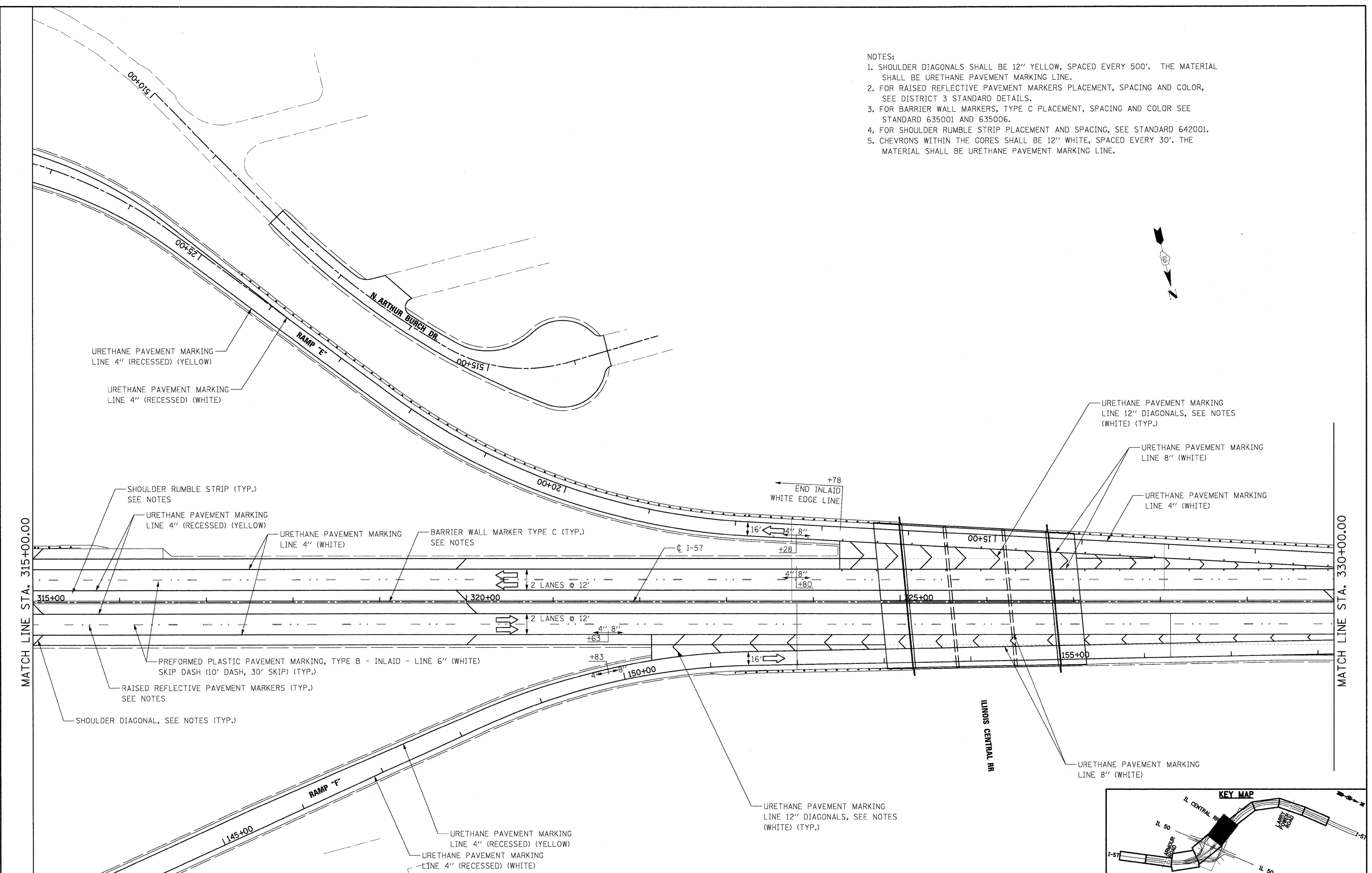


- NOTES:
1. SHOULDER DIAGONALS SHALL BE 12" YELLOW, SPACED EVERY 500'. THE MATERIAL SHALL BE URETHANE PAVEMENT MARKING LINE.
 2. FOR RAISED REFLECTIVE PAVEMENT MARKERS PLACEMENT, SPACING AND COLOR, SEE DISTRICT 3 STANDARD DETAILS.
 3. FOR BARRIER WALL MARKERS, TYPE C PLACEMENT, SPACING AND COLOR SEE STANDARD 635001 AND 635006.
 4. FOR SHOULDER RUMBLE STRIP PLACEMENT AND SPACING, SEE STANDARD 642001.
 5. CHEVRONS WITHIN THE GORES SHALL BE 12" WHITE, SPACED EVERY 30'. THE MATERIAL SHALL BE URETHANE PAVEMENT MARKING LINE.



FILE NAME = I:\Dgn\sheet\pm04.dgn	USER NAME = E1310G	DESIGNED - TRK	REVISED -	STATE OF ILLINOIS DEPARTMENT OF TRANSPORTATION	PAVEMENT MARKING PLAN			F.A.I. RTE. 57	SECTION (46-2) I, HBR, VBR	COUNTY KANKAKEE	TOTAL SHEETS 558	SHEET NO. 191
	PLOT SCALE = 1/8"=1'	CHECKED - EJG	REVISED -		SCALE:	SHEET NO.	OF SHEETS	STA.	TO STA.	CONTRACT NO. 66409		
	PLOT DATE = 12/22/2010	DATE - 12/17/10	REVISED -		FED. ROAD DIST. NO. 3 ILLINOIS FED. AID PROJECT							