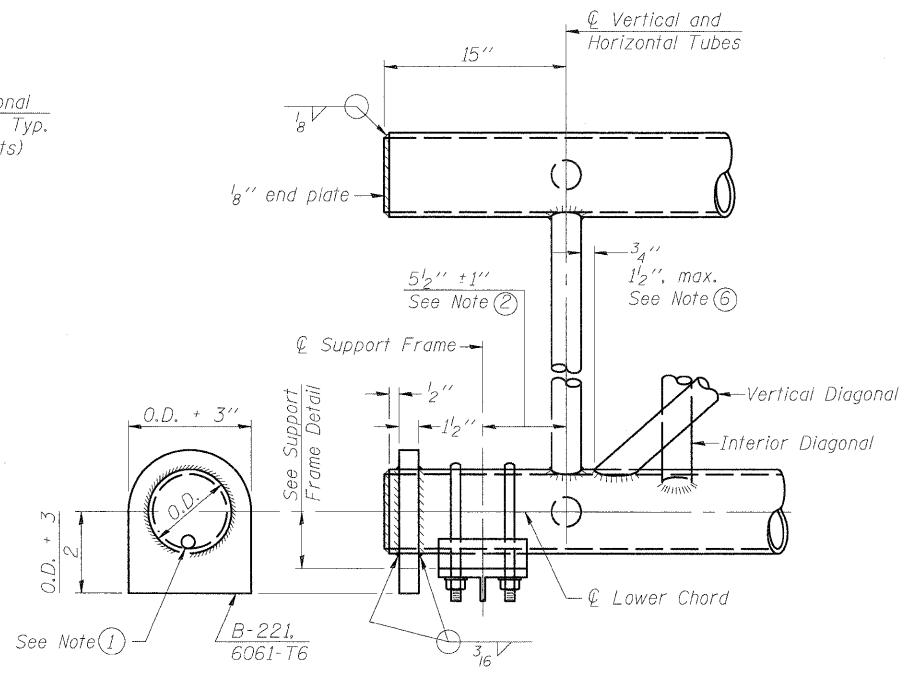
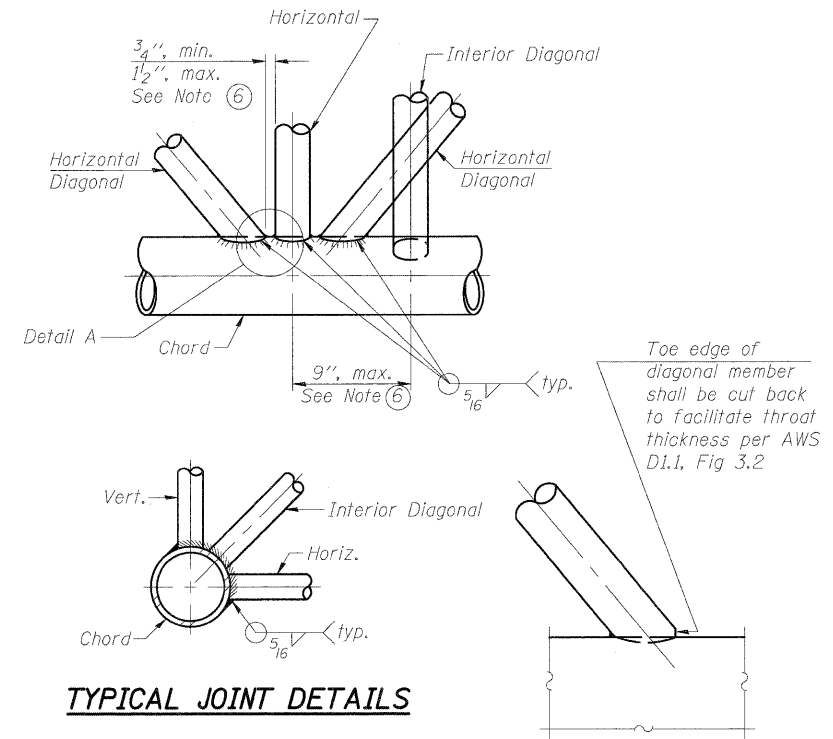


**ELEVATION
TYPICAL INTERIOR UNIT**
Even number of panels/interior unit required.

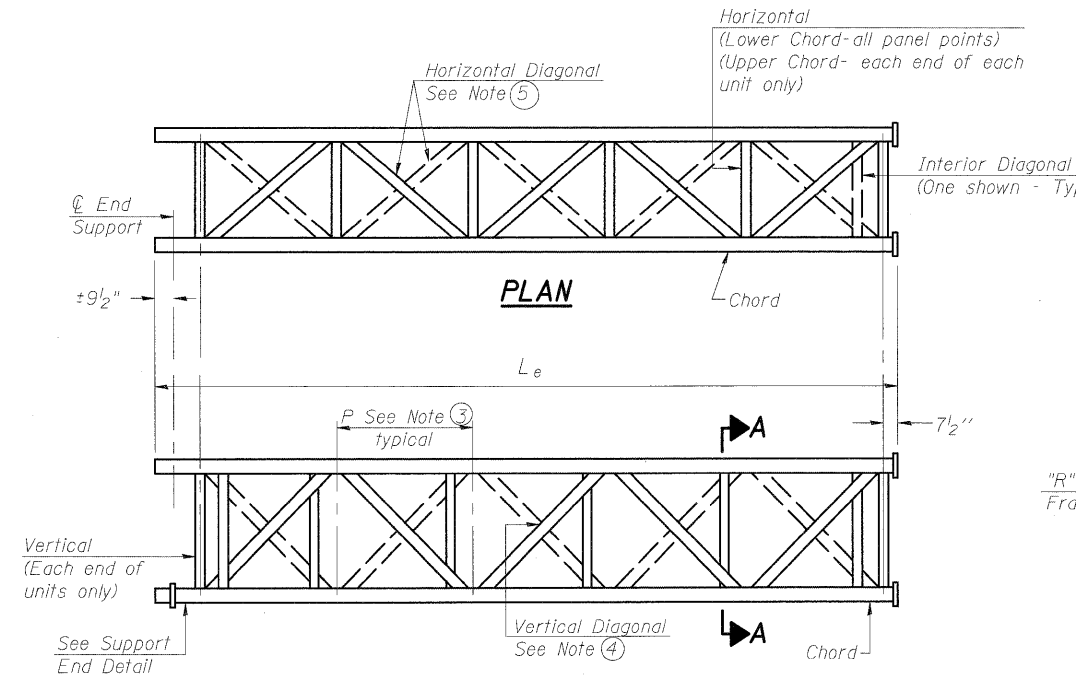


SUPPORT END DETAIL FOR EXTERIOR UNIT

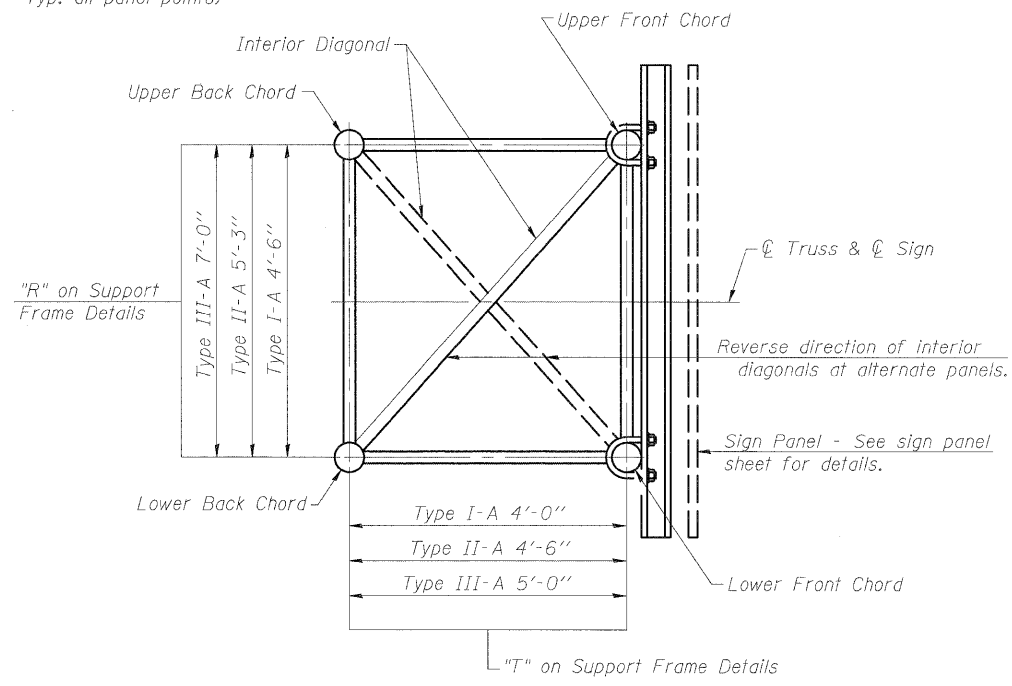


TYPICAL JOINT DETAILS

DETAIL A



**ELEVATION
TYPICAL EXTERIOR UNIT**
Even or odd number of panels/exterior units allowed.



SECTION A-A

- Contractor may alternatively use standard aluminum drive-fit cap to close end. 1/2" ϕ drain hole in end plate/drive-fit cap. (Typ. at ends of all chords)
- ①
 - ② 5 1/2" end dimension may vary by $\pm 1"$ to provide uniform panel spacing (P).
 - ③ Panel spacing (P) shall be uniform for entire truss and between 4'-0" and 5'-0" for Type I-A or 1'-0" and 5'-6" for Types II-A and III-A.
 - ④ Vertical Diagonals in front and back face shall alternate.
 - ⑤ Hidden lines show wind bracing alternates direction between planes of top and bottom chords.
 - ⑥ All diagonals shall be detailed for minimum offset from the panel point based on the following: Offset shall be such as to provide a 3/4" minimum to 1 1/2" maximum clearance between any diagonal and any horizontal or vertical member, and to provide clearance for U-bolt connections of signs or walkway brackets.

OS-A-2

7-1-10

FILE NAME = H:\07031\Str-uct\dgn\sh1\NL 50-S124.dgn	USER NAME = EricG	DESIGNED - MGB	REVISED -	STATE OF ILLINOIS DEPARTMENT OF TRANSPORTATION	OVERHEAD SIGN STRUCTURES - ALUMINUM TRUSS DETAILS FOR TRUSS TYPES I-A, II-A AND III-A	F.A.I RTE.	SECTION	COUNTY	TOTAL SHEETS	SHEET NO.		
PLOT SCALE = 1:0.0833333	DRAWN - MGB	CHECKED - BB	REVISED -			57	(46-2) I, HBR, VBR	KANKAKEE	558	217		
PLOT DATE = 12/22/2012	CHECKED - BB	REVISOR -	REVISED -			CONTRACT NO. 66409						
SHEET NO. 2 OF 10 SHEETS						FED. ROAD DIST. NO. 3 ILLINOIS FED. AID PROJECT						