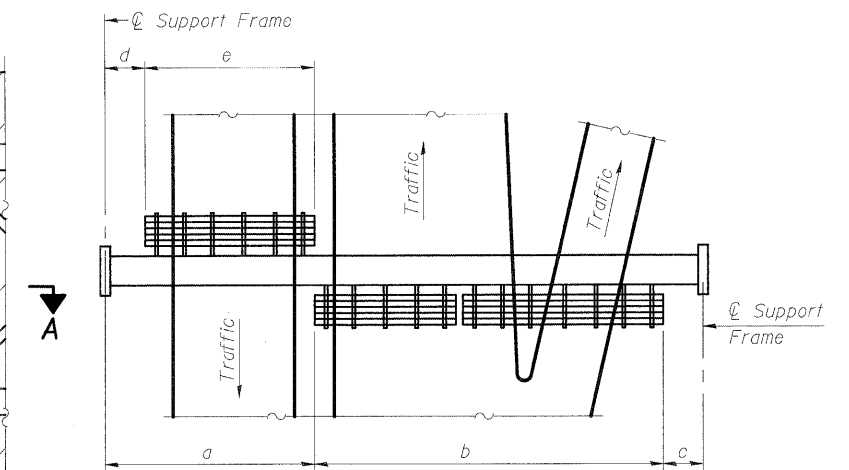


TYPICAL FRONT ELEVATION
 With lights and handrail omitted for clarity.
 For Section B-B, see Base Sheet OS-A-10.

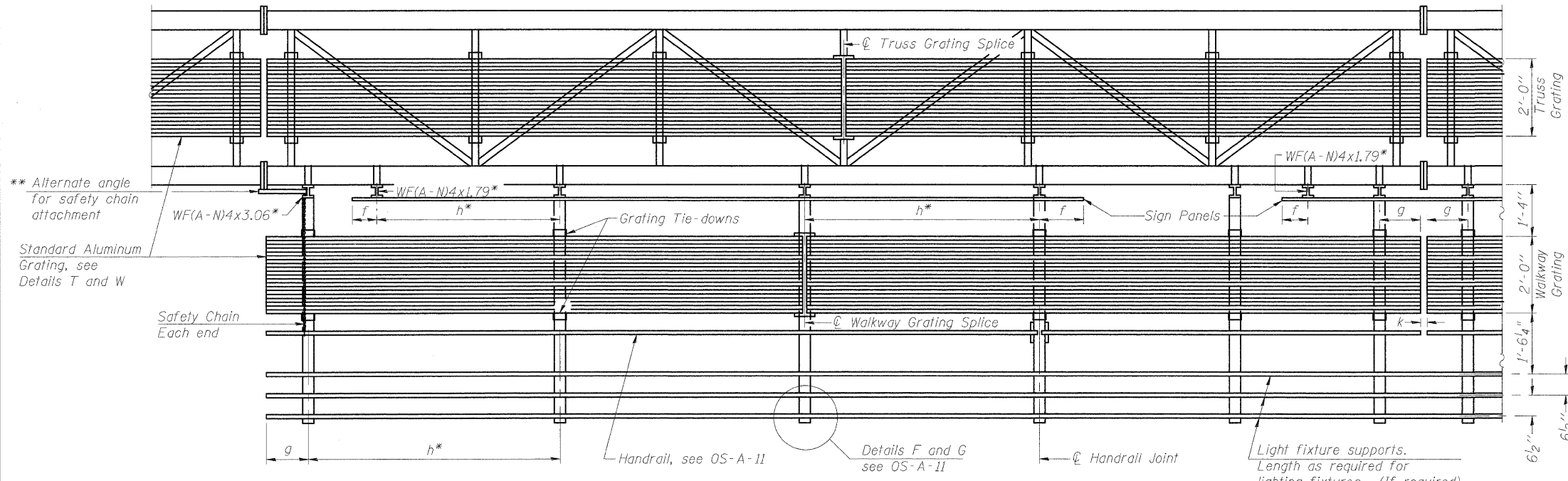


PLAN WALKWAY AND HANDRAIL SKETCH
 (Road plan beneath truss varies)

BRACKET TABLE

| WF(A-N)4x1.79 or WF(A-N)4x3.06 ASTM B308, Alloy 6061-T6 | | |
|--|--------------------------|--------------------------------|
| Sign Width | | Number Brackets Required |
| Greater Than | Less Than or Equal To | |
| | 8'-0" | 2 |
| 8'-0" | 14'-0" | 3 |
| 14'-0" | 20'-0" | 4 |
| 20'-0" | 26'-0" | 5 |
| 26'-0" | 32'-0" | 6 |

Notes:
 * Space walkway brackets WF(A-N)4x3.06 and sign brackets WF(A-N)4x1.79 for efficiency and within limits shown:
 $f = 12''$ maximum, $4''$ minimum (End of sign to ϕ of nearest bracket)
 $g = 12''$ maximum, $4''$ minimum (End of walkway grating to ϕ of nearest support bracket)
 $h = 6'-0''$ maximum (ϕ to ϕ sign and/or walkway support brackets, WF(A-N)4x1.79 or WF(A-N)4x3.06)
 $k = 2''$ maximum gap between adjacent walkway grating sections and handrail ends
 ** If walkway bracket at safety chain location is behind sign, add angle to bracket, see Alternate Safety Chain Attachment on Base Sheet OS-A-11.
 For Details T and W, Section B-B and Grating Splice Details see Base Sheet OS-A-10.
 For Handrail Details see Base Sheet OS-A-11.



SECTION A-A

Handrail and walkway shall span a minimum of three brackets between splices and/or gap joints. Place all sign and walkway brackets as close to panel points as practical. Handrail joints, grating, and light support splices placed as needed.

| Structure Number | Station | a | b | c | d | e | Walkway Grating and Handrail Lengths |
|------------------|---------|-------|--------|--------|---|---|--------------------------------------|
| 3S046S050R315.5 | 1300+97 | 7'-0" | 44'-0" | 24'-0" | - | - | - |
| 3S046S050L315.5 | 1320+50 | 8'-0" | 44'-0" | 3'-0" | - | - | - |
| | | | | | | | |
| | | | | | | | |
| | | | | | | | |
| | | | | | | | |
| | | | | | | | |
| | | | | | | | |
| | | | | | | | |

Truss grating to facilitate inspection shall run full length (center to center of support frames) $\pm 12''$ on overhead trusses. Cost of truss grating is included in "Overhead Sign Structure".

Walkway and Truss Grating width dimensions are nominal and may vary $\pm 1/2''$ based on available standard widths.

WALKWAY GRATING, HANDRAIL AND LIGHT FIXTURE ARE NOT REQUIRED.

OS-A-9

7-1-10